

BLOWER FLOOR PLAN

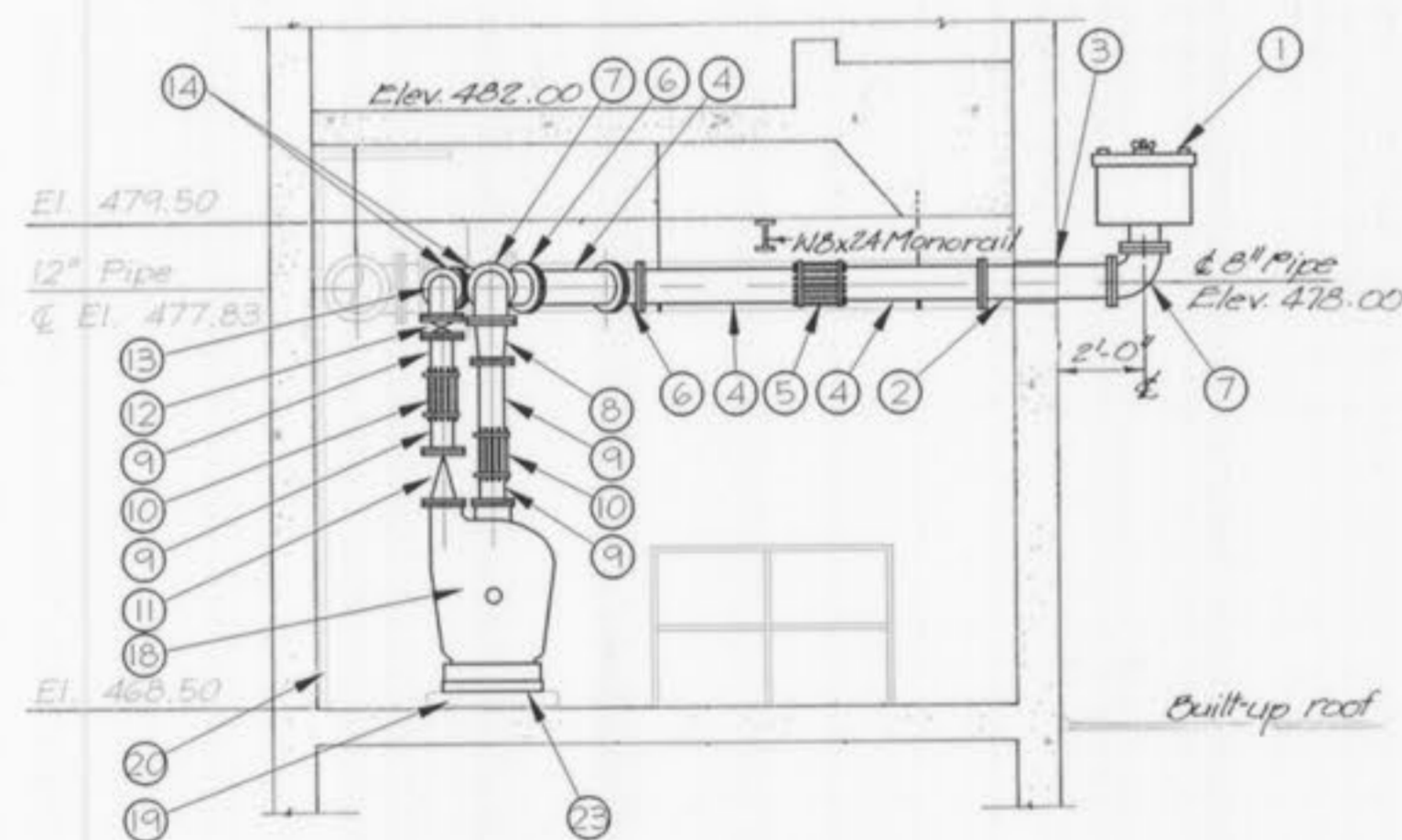
SCALE : 1/4" = 1'-0"

LEGEND

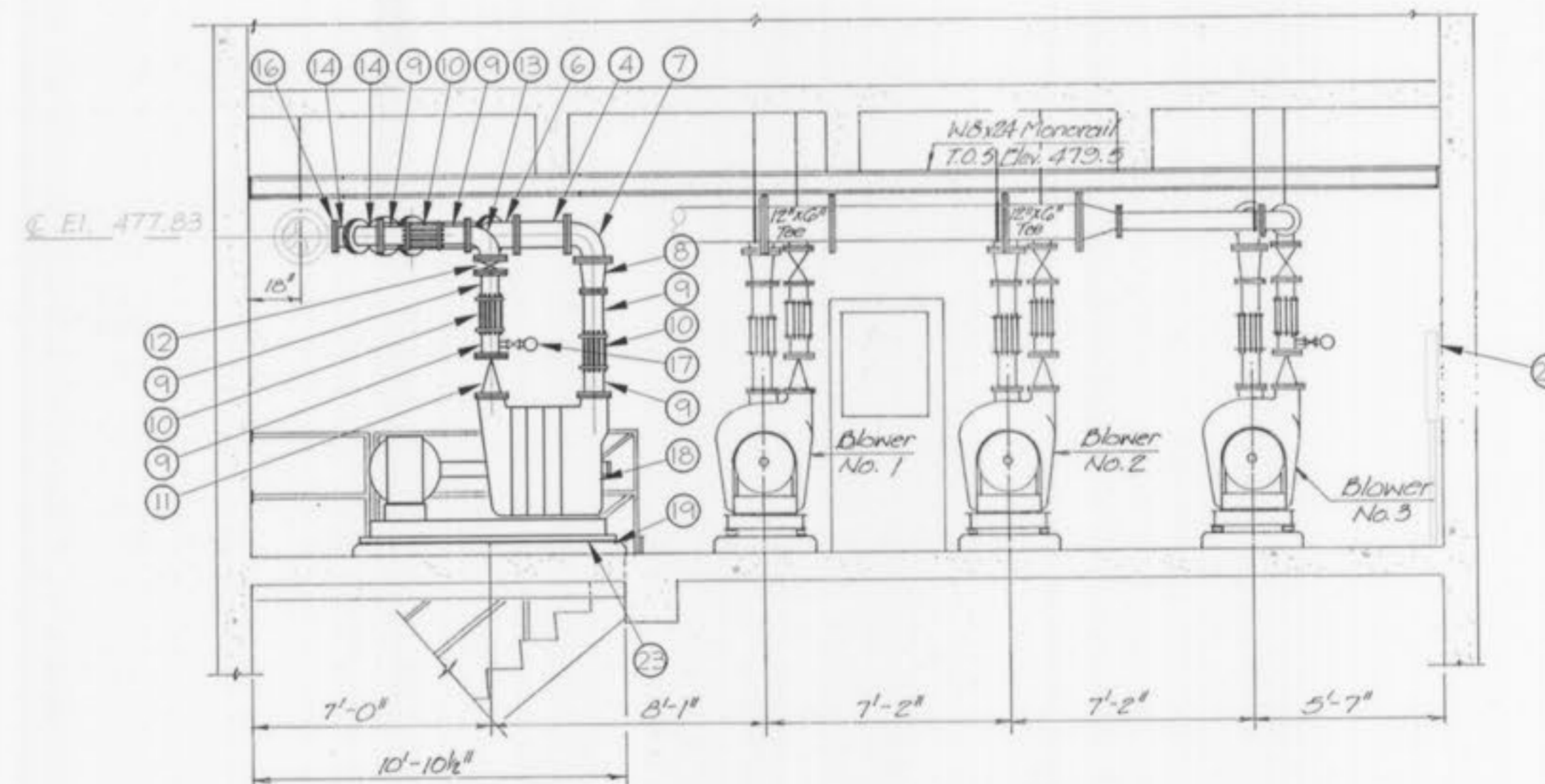
- 1 8" Intake Filter (New) to match existing 3 Filters
- 2 8" Connection piece through Wall w/ Link Seal installed, Grout Solid
- 3 10" Existing hole in Wall to have Caps Removed and Cleaned and Prepared for use
- 4 8" Connection Piece (New)
- 5 8" Chlorobutyl Rubber Expansion Coupling (New)
- 6 8" x 45° Flg. Bend (New)
- 7 8" x 90° Flg. Bend (New)
- 8 8" x 6" Flg. Reducer (New)
- 9 6" Connection Piece (New)
- 10 6" Chlorobutyl Rubber Expansion Coupling (New)
- 11 6" Flg. Air Check Valve (New)
- 12 6" Flg. Butterfly Air Valve (New)
- 13 6" x 90° Flg. Bend (New)
- 14 6" x 45° Flg. Bend (New)
- 15 12" x 6" Reducing Tee (Existing)
- 16 6" Blind Flange To Be Removed (Existing)
- 17 Monometer Type Discharge Pressure Gauge (New)
- 18 Blower No. 4 Assembly (New)
- 19 3'-0" x 8'-0" x 4" Concrete Housekeeping Pad (Existing)
- 20 Conduit Piping up the wall and over the Pad for Blower No. 4 Assembly (Existing)
- 21 Empty Conduit Piping to Open Area for Electrical Box (Existing)
- 22 Electrical Boxes (Existing)
- 23 Cork Pad below Pump Per Manufacturer's Recommendations (New)

NOTES:

1. The Contractor shall field verify all dimensions and elevations and submit a layout plan for piping, equipment and fittings selected for review with the shop drawings.



SECTION 2
SCALE : 1/4" = 1'-0"



SECTION 1
SCALE : 1/4" = 1'-0"