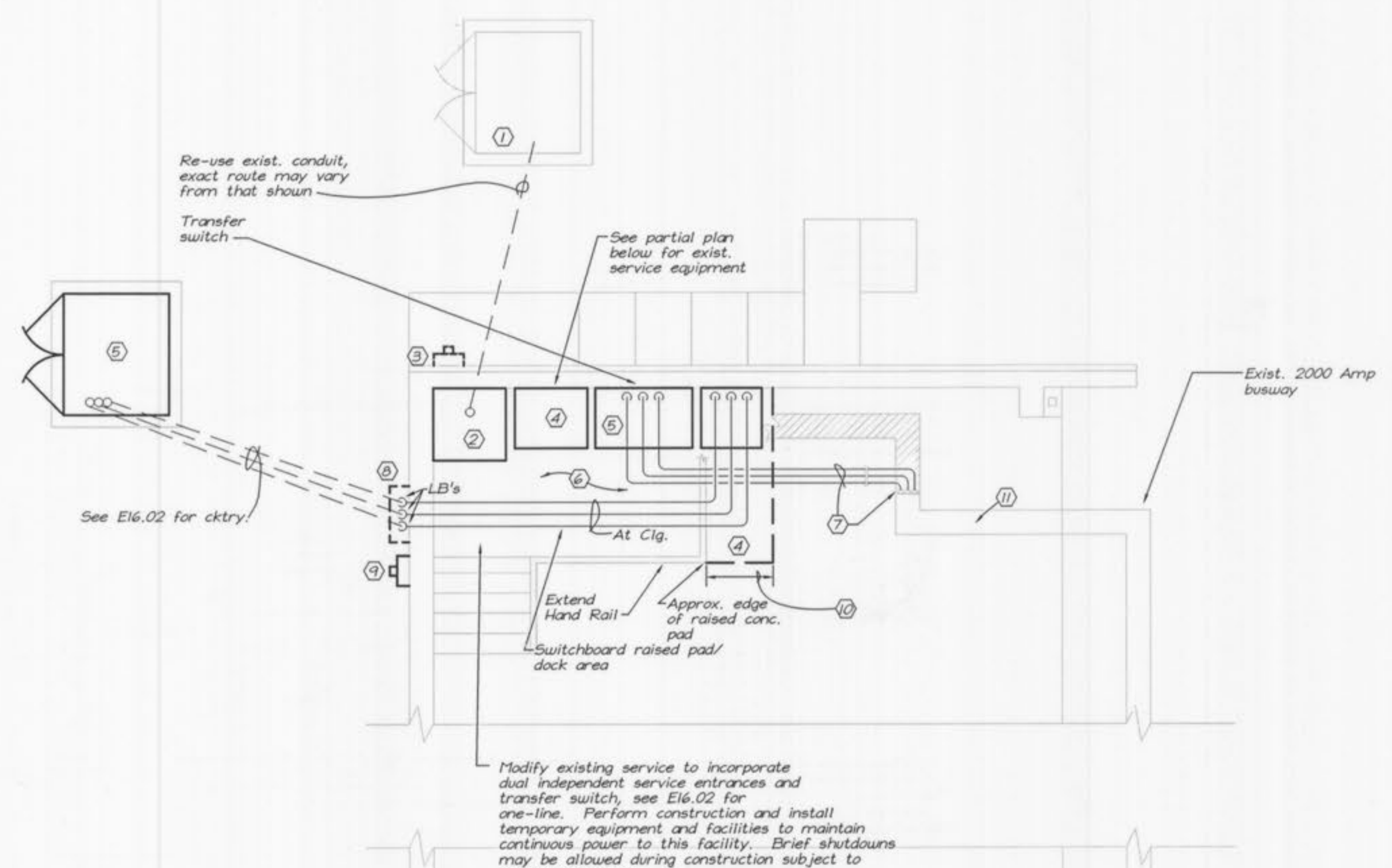
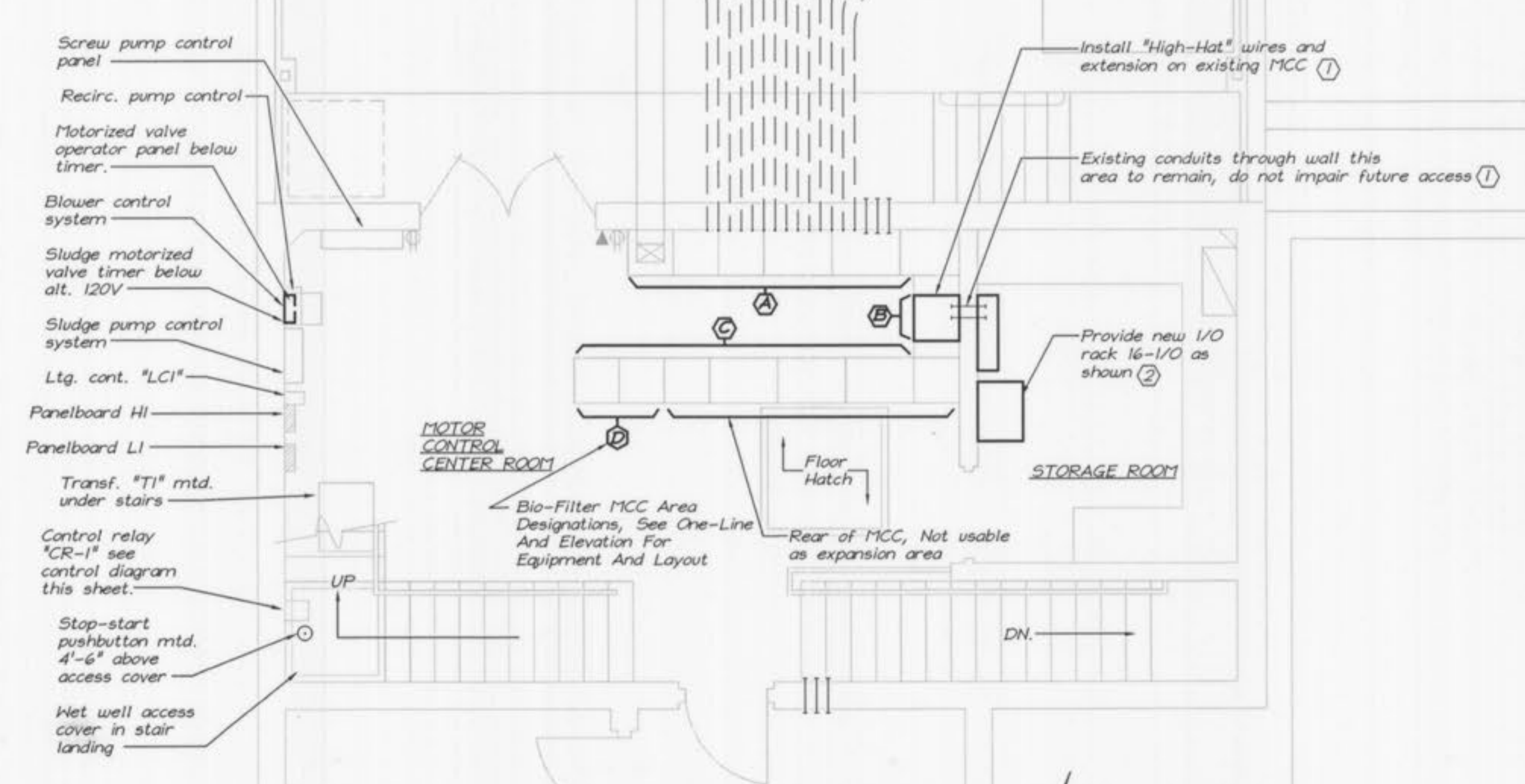


K:\Client\O'Fallon\9234\dwg\Elec\92341601.dwg Layout: E16.01 Monday, October 08, 2001, 12:59pm -- Copyright 2001, George Butler Associates, Inc.



**PARTIAL PLAN - GARAGE AREA (SERVICE EQUIPMENT)**  
SCALE: 1/4" = 1'-0"



**OPERATING FLOOR PLAN (UPPER LEVEL)**  
SCALE: 1/4" = 1'-0"

- NOTES:**
- (1) Exist. Ameren U.E. XFMR on pad, replace service conductors with new equipment in same location.
  - (2) Replace existing incoming secondary pull section (with CT & PT) with similar new equipment in same location. Coordinate with utility.
  - (3) Existing Ameren U.E. meter, rewire as required for service replacement.
  - (4) Extend existing platform (42"H) to accommodate new switchboard and related equipment. Provide interconnecting circuitry for new transfer switch per one-line. Circuit layout may vary slightly from that shown subject to approval of the Owner's Representative.
  - (5) 1200 AMP, 480V, 3φ 4-pole transfer switch.
  - (6) New equipment mounted in this area shall include space heaters, thermostatically operated to prevent condensation within equipment enclosures.
  - (7) Install conduit & wire feeders from transfer switch load terminals to new cable tap section mounted on exist. 2000A busway. Install tap section to existing busway NEMA 3R, modify as required.
  - (8) Current transformer cabinet by electrical contractor - size as required. Coordinate with Cuivre River Elec. Co-op (contains C.T.'s & P.T.'s). Furn. with locking capability.
  - (9) New instrument-type power meter by CREC. Elec. contractor to provide & set meter can. Span between C.T. cabinet & meter can with 1-1/2" EMT.
  - (10) Contractor shall extend existing platform (42" high), incorporating min. 8" thick walls and 12" slab. Contractor shall submit design, as sealed by a Registered Professional Engineer in the State of Mo., to the Engineer for review.
  - (11) Existing 2000 AMP busway to remain in service.

**WASTEWATER TREATMENT PLANT EXPANSION**  
**BIO-FILTER COMPLEX MODIFICATION**  
**OPERATING FLOOR PLAN**  
 CITY OF O'FALLON, MISSOURI

JOB NO.: 9234
DATE: 10-08-2001
DESIGNED BY: SLC
DRAWN BY: KRC
CHECKED BY: SLC
SHEET NUMBER
<b>E16.01</b>

**GBA**  
 GEORGE BUTLER ASSOCIATES, INC.  
 Engineers • Architects  
 Kansas • Missouri • Illinois

