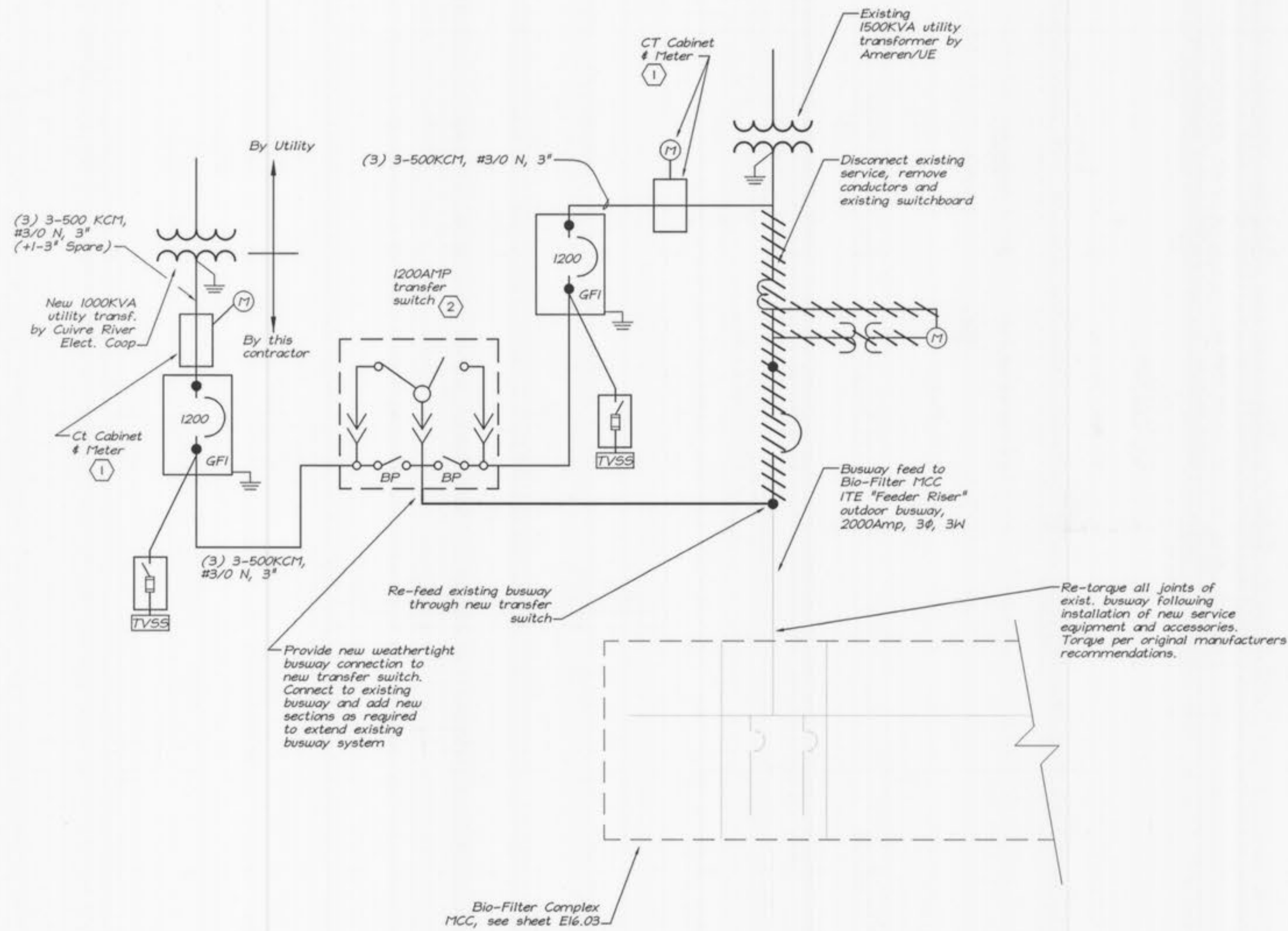
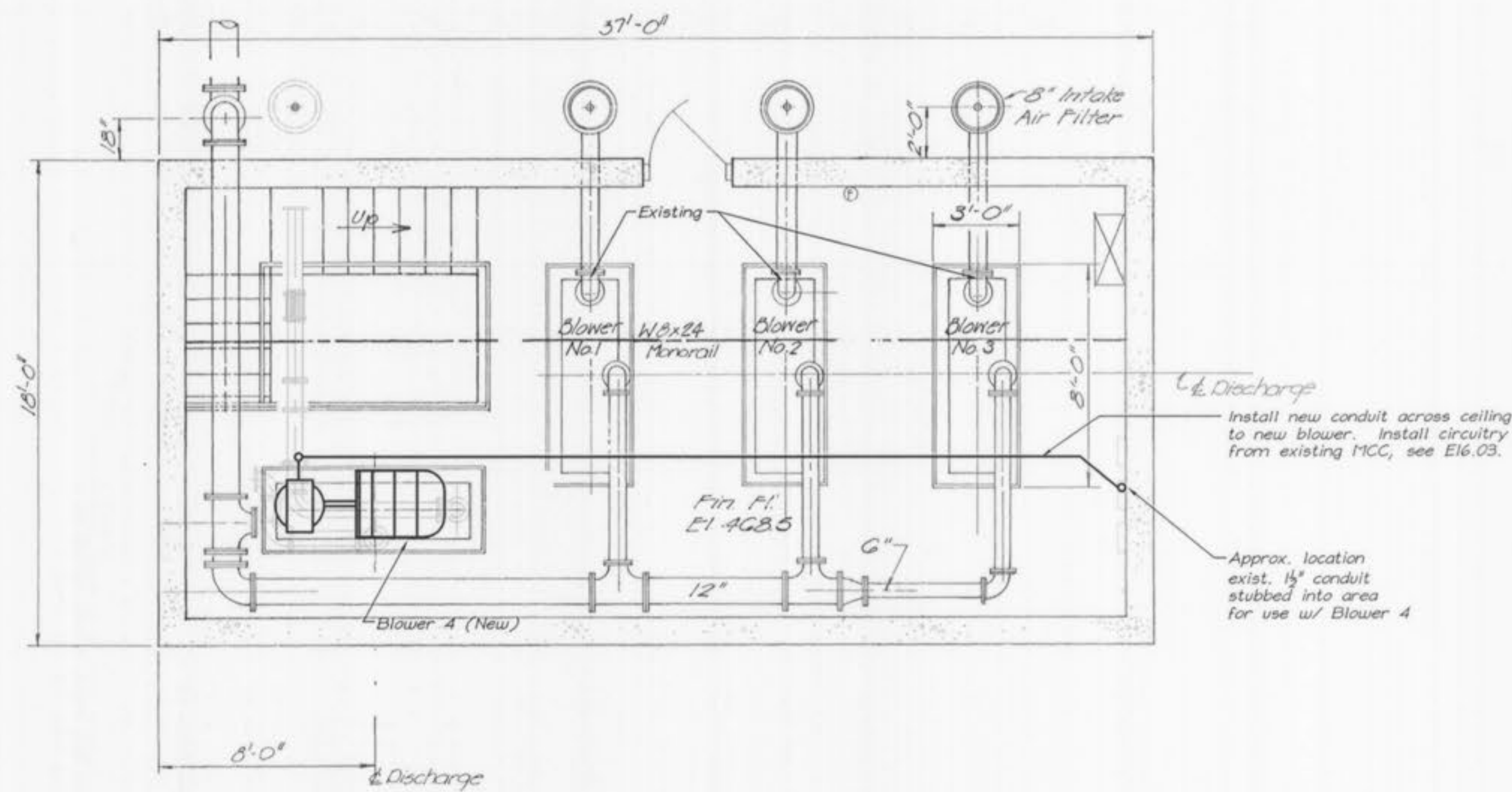


K:\Client\O'Fallon\9234\dwg\Elec\92341602.dwg Layout: E16.02 Monday, October 08, 2001, 1:00pm -- Copyright 2001, George Butler Associates, Inc.



**SERVICE ENTRANCE MODIFICATIONS
ONE-LINE**

No Scale



BLOWER FLOOR PLAN

SCALE: 1/4" = 1'-0"

Notes:

- (1) Contractor shall coordinate with electrical utilities (Ameren-UE and Cuivre River Electric Cooperative) and shall furnish and install CT cabinet, metering provisions and all wiring and appurtenances as necessary for a complete, safe and properly operating metering system for both utilities.
- (2) Automatic operation of transfer switch for this facility shall be disabled. Transfer shall be manually initiated only.

**WASTEWATER TREATMENT PLANT EXPANSION
BIO-FILTER COMPLEX SERVICE
ONE-LINE AND BLOWER FLOOR PLAN**
CITY OF OFALLON, MISSOURI

JOB NO.: 9234
DATE: 10-08-2001

DESIGNED BY: SLC
DRAWN BY: CFZ
CHECKED BY: SLC

SHEET NUMBER

E16.02

GEORGE BUTLER ASSOCIATES, INC.
Engineers • Architects
Kansas • Missouri • Illinois

