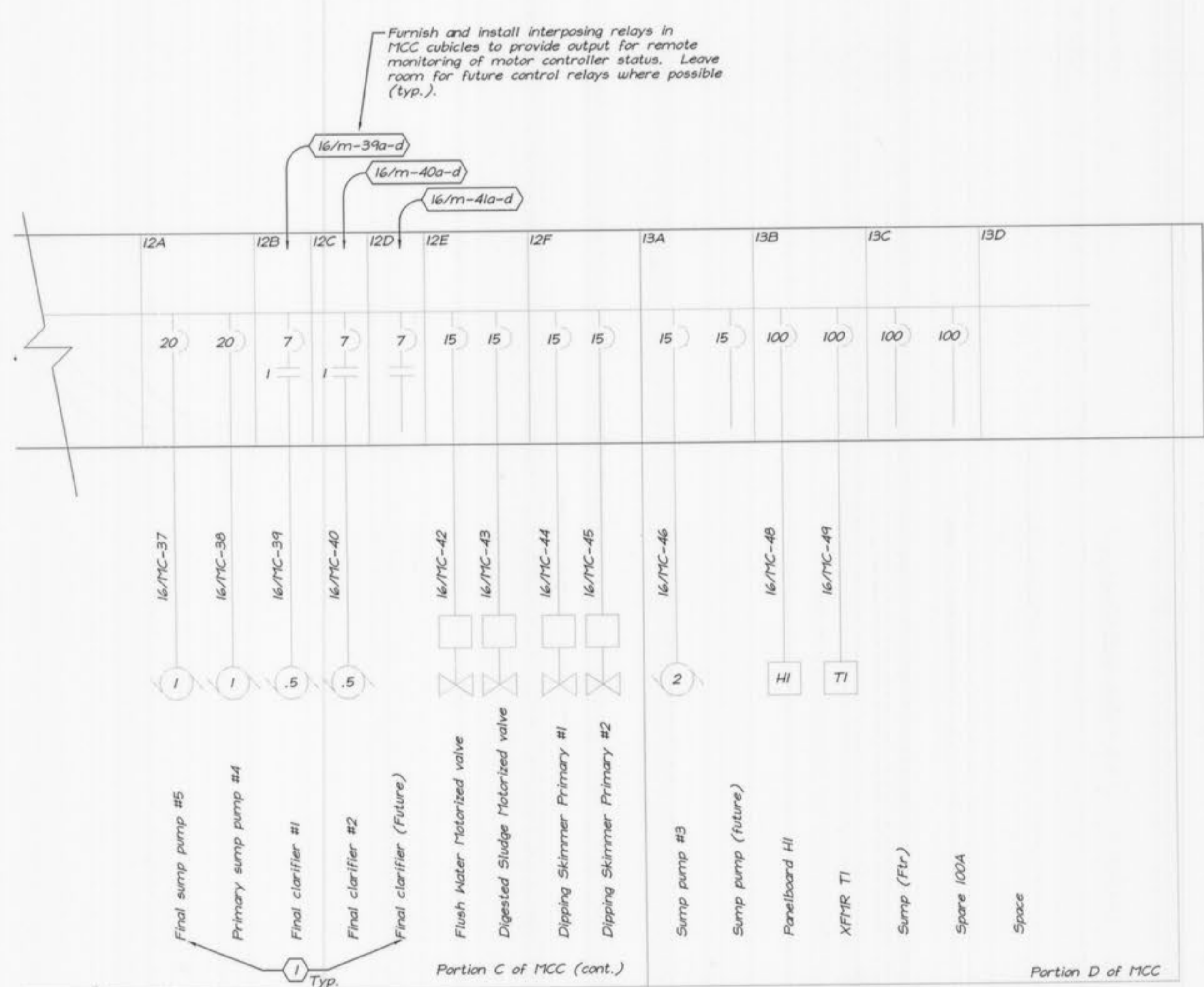
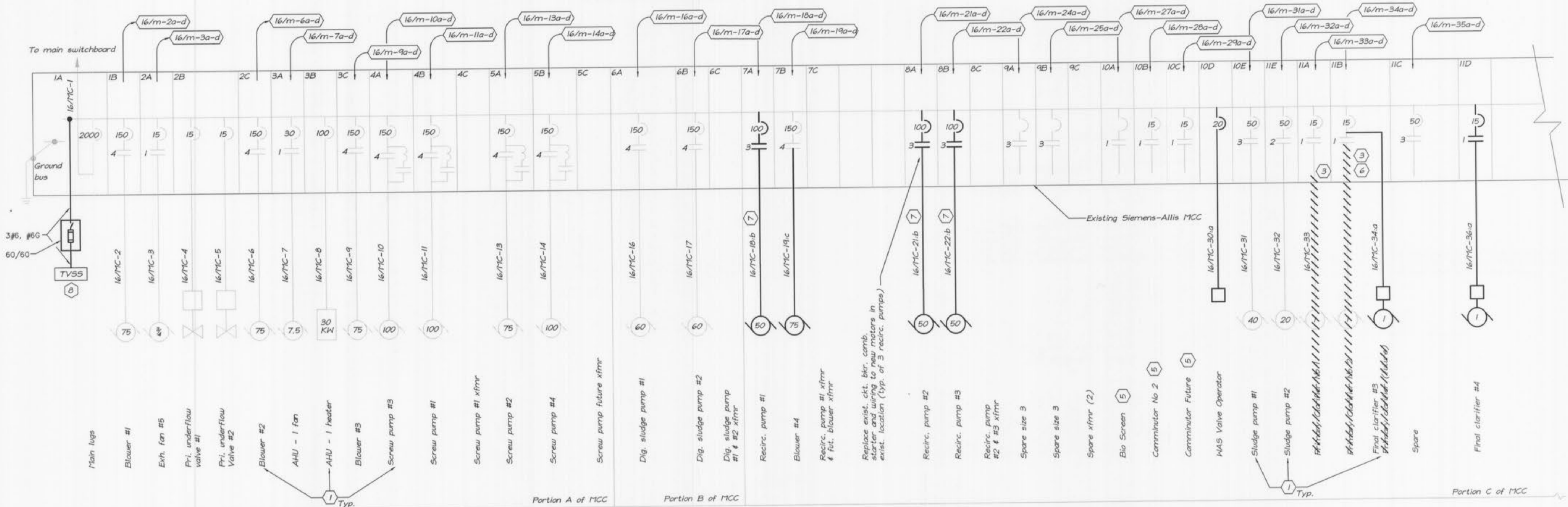


BIO-FILTER COMPLEX MOTOR CONTROL CENTER
 2000A, 480/277V, 3PH, 4W, 65 KAIC BUS BRACING, 22KAIC SHORT CKT RATING
 LOCATION: BIO-FILTER COMPLEX



MCC ONE-LINE (CONT'D)
 NO SCALE

BIO-FILTER COMPLEX MCC ONE-LINE
 NO SCALE

POWER WIRING SCHEDULE - NEW:

- a - 3#12, #12G, 3/4"
- b - 3#6, #6G, 1"
- c - 3#1, #6G, 1-1/2"

NOTES:

- 1 Motor control center cubicle designations shown reflect individual cubicle nameplates. (Typical)
- 2 Indicates MCC cubicles not presently used. Remove nameplate and re-label and re-use as shown or label as spare where not re-used.
- 3 Disconnect circuitry for indicated loads, remove nameplate, label as "spare", or re-use as indicated.
- 4 Rear face of existing mcc sections, not suitable for equipment addition or use.
- 5 Remove existing nameplates from indicated sections, replace with revised nameplates as indicated.
- 6 Disconnect and remove motor controllers in indicated cubicles. Install circuitry from existing breakers to new/revised loads, provide new nameplate as shown.
- 7 Re-use existing conduit where noted and if suitable for re-use, where conduit is rusted, scaling or damaged, replace with new, sized as indicated.
- 8 Install TVSS on MCC near point of service entrance. Nipple through MCC and install on top of enclosure. Conductors shall be min. length possible and shall not exceed mfrs. recommendations.

| Portion A of MCC | | | Portion B of MCC | | | Portion C of MCC | | | Portion D of MCC | | | | | | | | |
|------------------|---------------------|-----------------|-----------------------|---------------------------|-----------------------------------|--------------------|-------------------------|--------------------|------------------|--------------------|--------------------------|-----------------|----------------------|---------|---------|---------|---------|
| Sect 1 | Sect 2 | Sect 3 | Sect 4 | Sect 5 | Sect 6 | Sect 7 | Sect 8 | Sect 9 | Sect 10 | Sect 11 | Sect 12 | Sect 13 | Sect 14 | Sect 15 | Sect 16 | Sect 17 | Sect 18 |
| 1A | 2A Exhaust fan #5 | 3A AHU-1 fan | 4A Screw pump #3 | 5A Screw pump #2 | 6A Digester sludge pump #1 | 7A Recirc. Pump #1 | 8A Recirc. pump #2 | 9A Spare Size 3 | 10A Bar scrn (2) | 11A Prim. clar. #1 | 12A Final clar. #1 | 13A Empty space | 14A Office Lab Bldg. | 15A | | | |
| 1B | 2B Pri. U.F. valves | 3C AHU-1 heater | 4B Screw pump #1 | 5B Screw pump #4 | 6B Digester sludge pump #2 | 7B Blower #4 | 8B Recirc. pump #3 | 9B Spare Size 3 | 10B Comm. (2) | 11B Prim. clar. #2 | 12B Final clar. #2 | 13B Sump (Ftr.) | 14B Office Lab Bldg. | | | | |
| 1C | 2C | 3C | 4C Screw pump #1 xfmr | 5C Screw pump future xfmr | 6C Digester sludge pump #1#2 xfmr | 7C Blower xfmr | 8C Recirc. pump #1 xfmr | 9C (2) Spare xfmrs | 10C Comm. (2) | 11C Prim. Clar. #2 | 12C Final clar. (Future) | 13C Sump (Ftr.) | 14C Office Lab Bldg. | | | | |
| 1D | 2D | 3D | 4D | 5D | 6D | 7D | 8D | 9D | 10D | 11D | 12D | 13D | 14D | | | | |
| | Blower #1 | Blower #2 | Blower #3 | Sump pump #3 | Sump pump (Future) | Panelboard HI | XFFR TI | Sump (Ftr.) | Spare 100A | Space | | | | | | | |

BIO-FILTER MCC ELEVATION
 NO SCALE

GEORGE BUTLER ASSOCIATES, INC.
 Engineers • Architects
 Kansas • Missouri • Illinois



WASTEWATER TREATMENT PLANT EXPANSION
 BIO-FILTER COMPLEX
 MCC ONE - LINE
 CITY OF FALLON, MISSOURI

JOB NO.: 9234
 DATE: 10-08-2001

DESIGNED BY: SLG
 DRAWN BY: CFZ
 CHECKED BY: SLG

SHEET NUMBER
E16.03