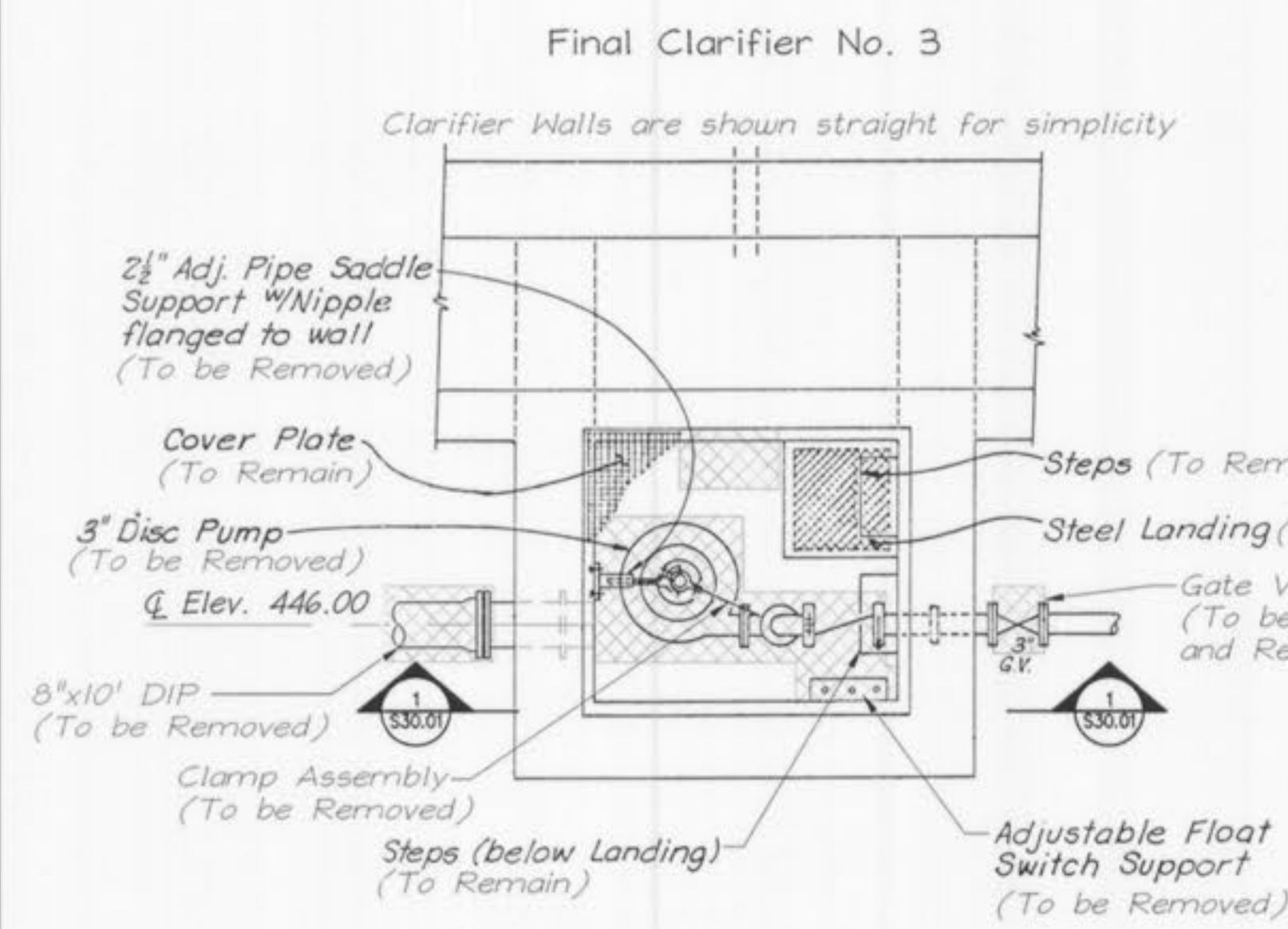
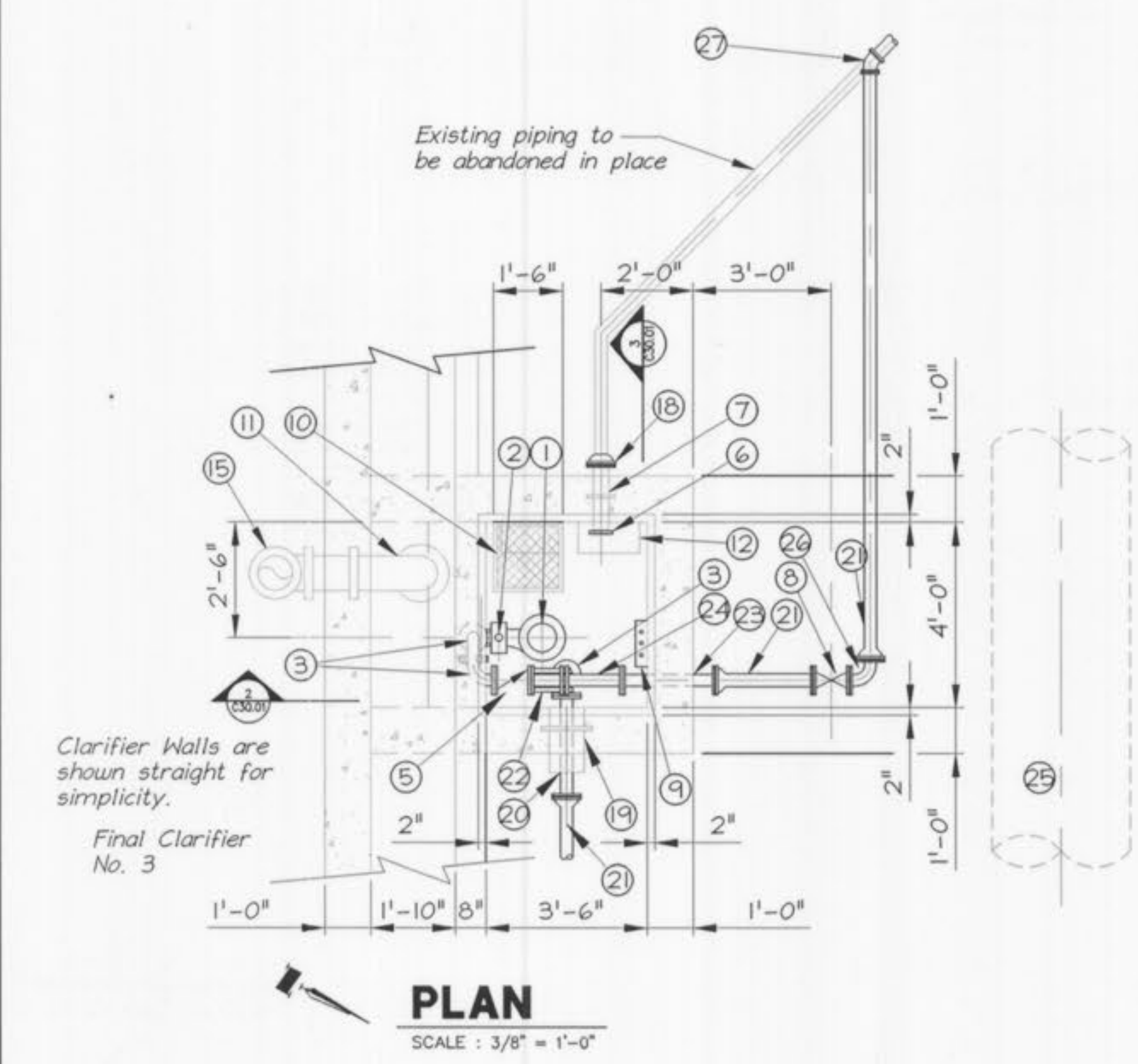


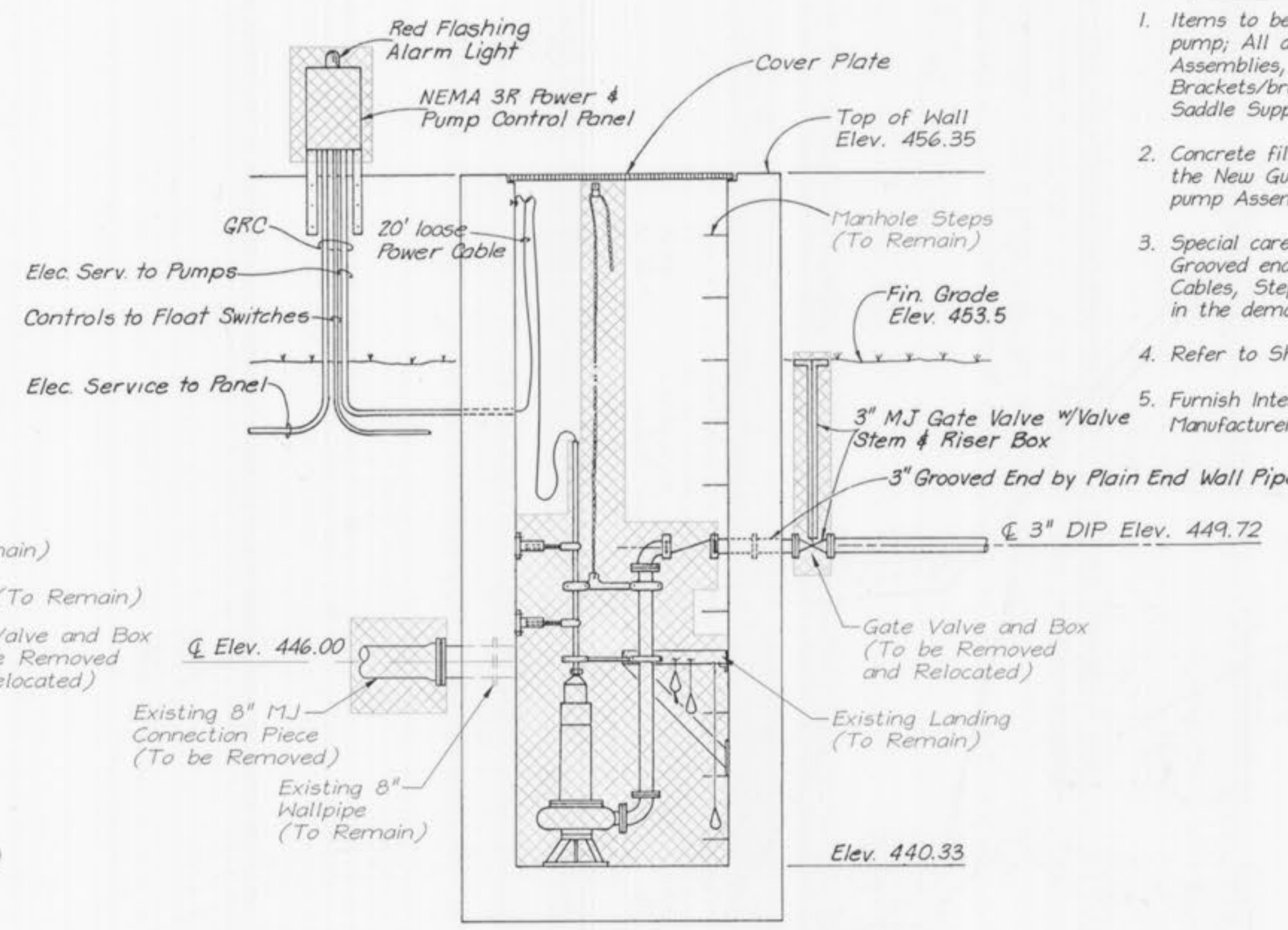
K:\Client\O'Fallon\9234\deg\Final\923446502.dwg Layout: C30.01 -- Thursday, October 04, 2001, 8:30am -- Copyright 2001, George Butler Associates, Inc.



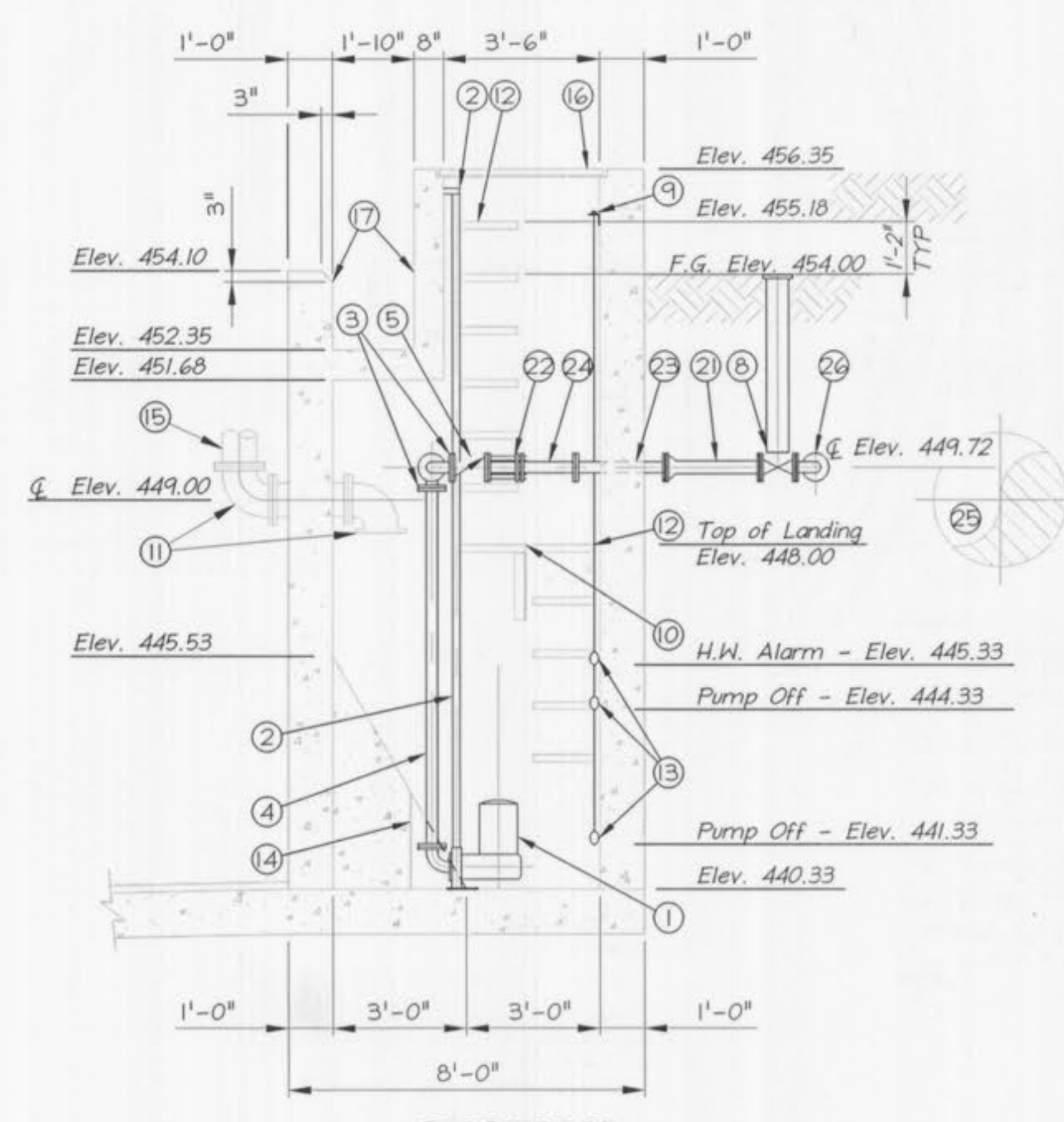
SCUM PIT DEMOLITION PLAN
SCALE: N.T.S.



PLAN
SCALE: 3/8" = 1'-0"



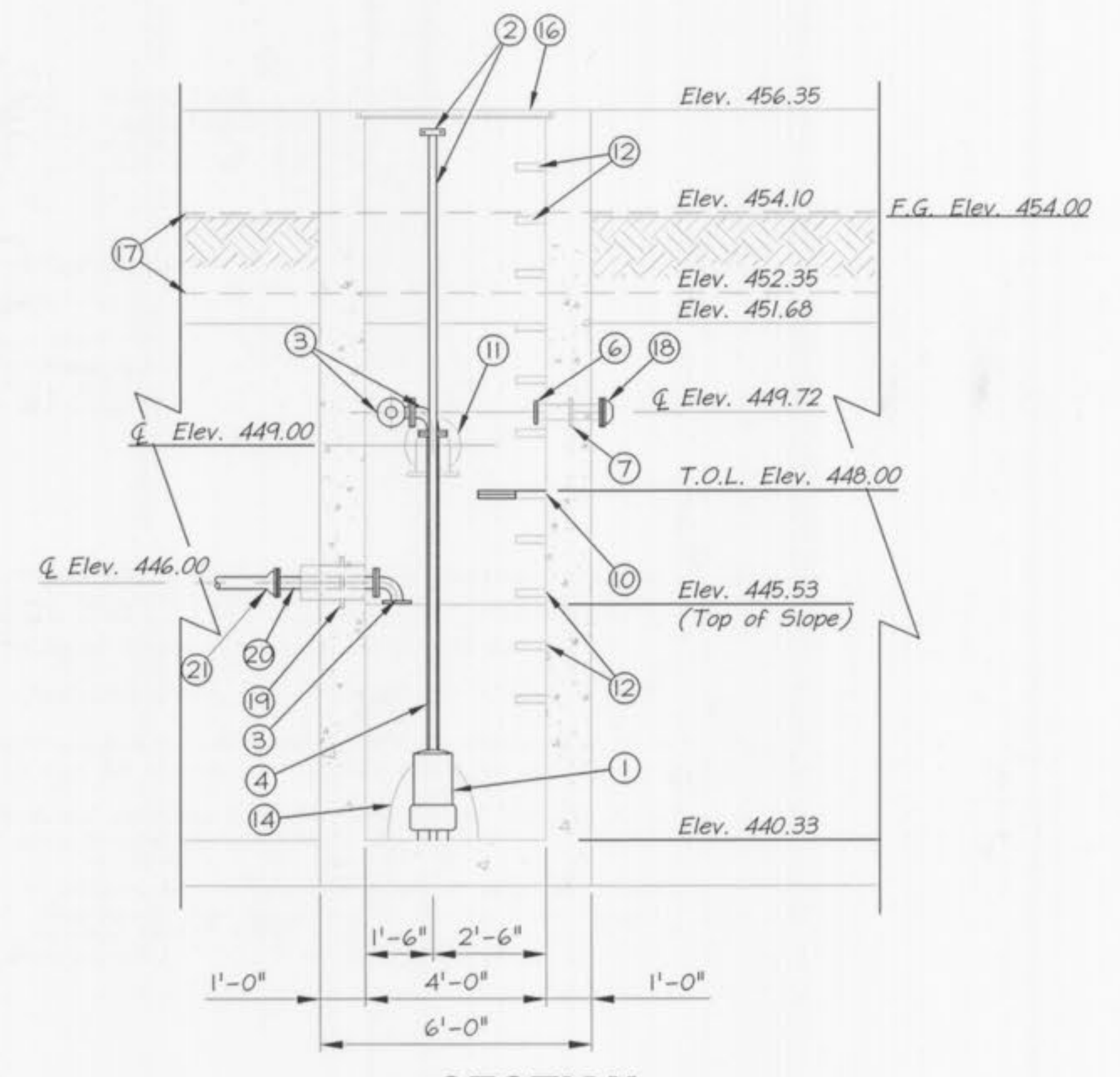
SECTION
SCALE: N.T.S.
(See plan for piping orientation)



SECTION
SCALE: 3/8" = 1'-0"

- DEMOLITION NOTES:**
- Items to be Demolished are as follows: 3" Disc pump; All discharge bends, Connection Pieces, Clamp Assemblies, Lifting Mechanisms, Float switches and Brackets/braces, 3" Victaulic Swing Check Valve, Saddle Supports Flanged to Wall.
 - Concrete fill chamfer to be demolished only to accept the New Guide Rail System, New piping and New Scum pump Assembly per Manufacturer's Recommendations
 - Special care should be used so that the 3" Victaulic Grooved end Wall Pipe, Power supply cable, Float Control Cables, Steps and Platform Assembly are not damaged in the demolition process.
 - Refer to Sheet E31.01 for Electrical Demolition Continuation.
 - Furnish Intermediate Supports on Guide Rails per Manufacturer's Recommendations.

- LEGEND**
- ABS Model AFP0841 Series AFP 3" Scum Pump (New)
 - Guide Rail System (New)
 - 3" x 90° DIP Flg. x Flg. Bend (New)
 - 3" DIP Flg. x Flg. Connection Piece (New)
 - 3" APCO, Series 100, Flg. Rubber Flapper Swing Check Valve (New)
 - 3" Victaulic Grooved End Plug (New)
 - 3" Wall pipe w/ Victaulic Grooved End x P.E. (Existing)
 - 3" M.J. Gate Valve with Box and Stern (Relocated)
 - Adjustable Float Switch Support (New)
 - Landing Platform Assembly (Existing)
 - 8" x 90° Bend (Existing)
 - Manhole Steps (Existing)
 - Adjustable Float Switches (New)
 - Limits of Demolition of Concrete Fill, Coat Exposed Reinforcing With Epoxy Paint
 - To Scum Beach Assembly (Existing)
 - Cover Plate Assembly (Existing)
 - Outboard Weir Trough (Existing)
 - 3" M.J. Plug (New)
 - 8" Wall pipe (Existing)
 - 3" DIP Flg. x P.E. Connection Piece (New) through Existing 8" Wall pipe, Install Link Seal and Grout Solid
 - 3" DIP M.J. Connection Piece (New)
 - 3" Flanged Coupling Adapter (New)
 - 3" DIP Flg. x P.E. Connection Piece through Wall with Link Seal Installed and Grout Solid (New)
 - 3" DIP Flg. x P.E. Connection Piece (New)
 - 36" Aeration Basin Effluent (Existing)
 - 3" x 90° M.J. Bend (New)
 - 3" x 45° M.J. Bend w/ RESTRAINTS (New)
 - Items or Area To Be Demolished and Removed



SECTION
SCALE: 3/8" = 1'-0"

WASTEWATER TREATMENT PLANT EXPANSION
FINAL CLARIFIER NO. 3
SCUM PIT MODIFICATIONS
 CITY OF O'FALLON, MISSOURI

JOB NO.: 9234
DATE: 10-08-2001

DESIGNED BY: TMS
DRAWN BY: RGA/DMH
CHECKED BY: RJR/TMS

SHEET NUMBER

C30.01

GEORGE BUTLER ASSOCIATES, INC.
 Engineers • Architects
 Kansas • Missouri • Illinois

