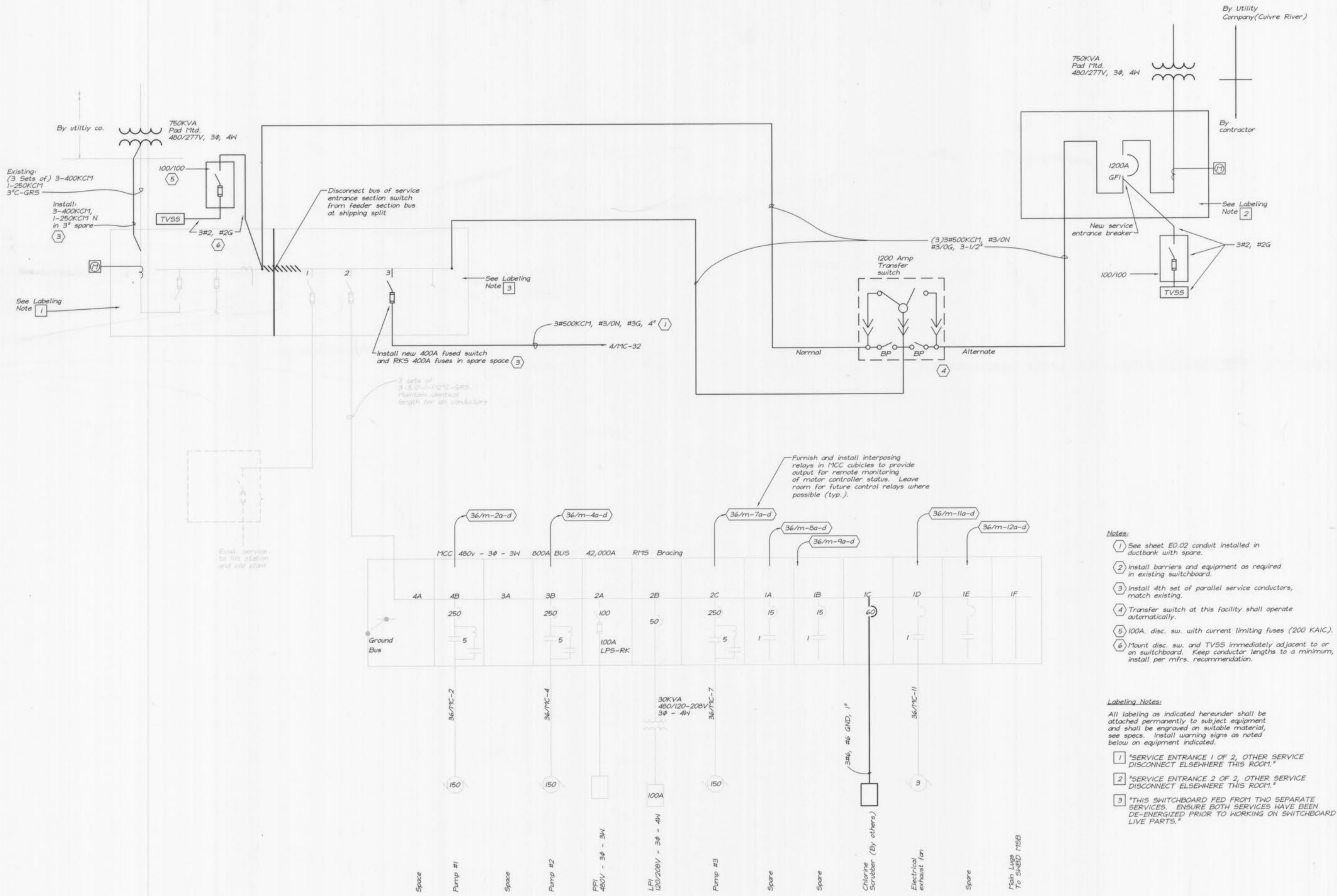


K:\Client\O'Fallon\9234\Elec\9234-5602.dwg Layout: E36.02 --- Monday, October 08, 2001, 3:24pm --- Copyright 2001, George Butler Associates, Inc.



**CHLORINE/ELECT. RM MCC ONE-LINE**

\* Equipment and systems shown with heavy line shall be F41 hereunder U.N.O.

- Notes:**
- 1 See sheet E0.02 conduit installed in ductbank with spare.
  - 2 Install barriers and equipment as required in existing switchboard.
  - 3 Install 4th set of parallel service conductors, match existing.
  - 4 Transfer switch at this facility shall operate automatically.
  - 5 100A disc. sw. with current limiting fuses (200 KAIC).
  - 6 Mount disc. sw. and TVSS immediately adjacent to or on switchboard. Keep conductor lengths to a minimum, install per mfrs. recommendation.

- Labeling Notes:**
- All labeling as indicated hereunder shall be attached permanently to subject equipment and shall be engraved on suitable material, see specs. Install warning signs as noted below on equipment indicated.
- 1 \*SERVICE ENTRANCE 1 OF 2, OTHER SERVICE DISCONNECT ELSEWHERE THIS ROOM.\*
  - 2 \*SERVICE ENTRANCE 2 OF 2, OTHER SERVICE DISCONNECT ELSEWHERE THIS ROOM.\*
  - 3 \*THIS SWITCHBOARD FED FROM TWO SEPARATE SERVICES. ENSURE BOTH SERVICES HAVE BEEN DE-ENERGIZED PRIOR TO WORKING ON SWITCHBOARD LIVE PARTS.\*

**GBA**  
 GEORGE BUTLER ASSOCIATES, INC.  
 Engineers • Architects  
 Kansas • Missouri • Illinois



**WASTEWATER TREATMENT PLANT EXPANSION  
 ELECTRICAL/CHLORINE BLDG. MOD.  
 ONE-LINE AND DETAILS**  
 CITY OF FALLON, MISSOURI

JOB NO.: 9234  
 DATE: 10-08-2001

DESIGNED BY: SLC  
 DRAWN BY: KRC  
 CHECKED BY: SLC

SHEET NUMBER  
**E36.02**