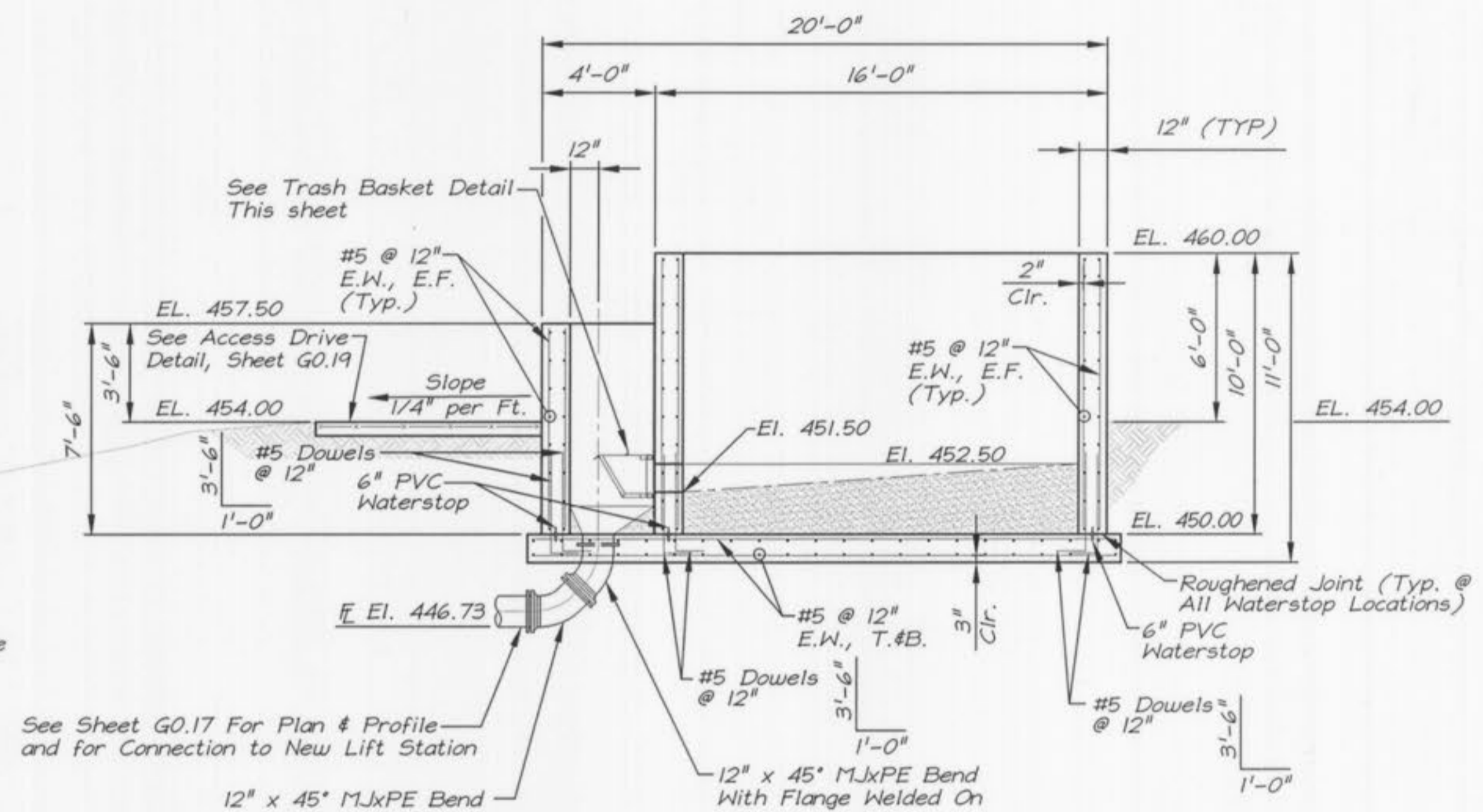


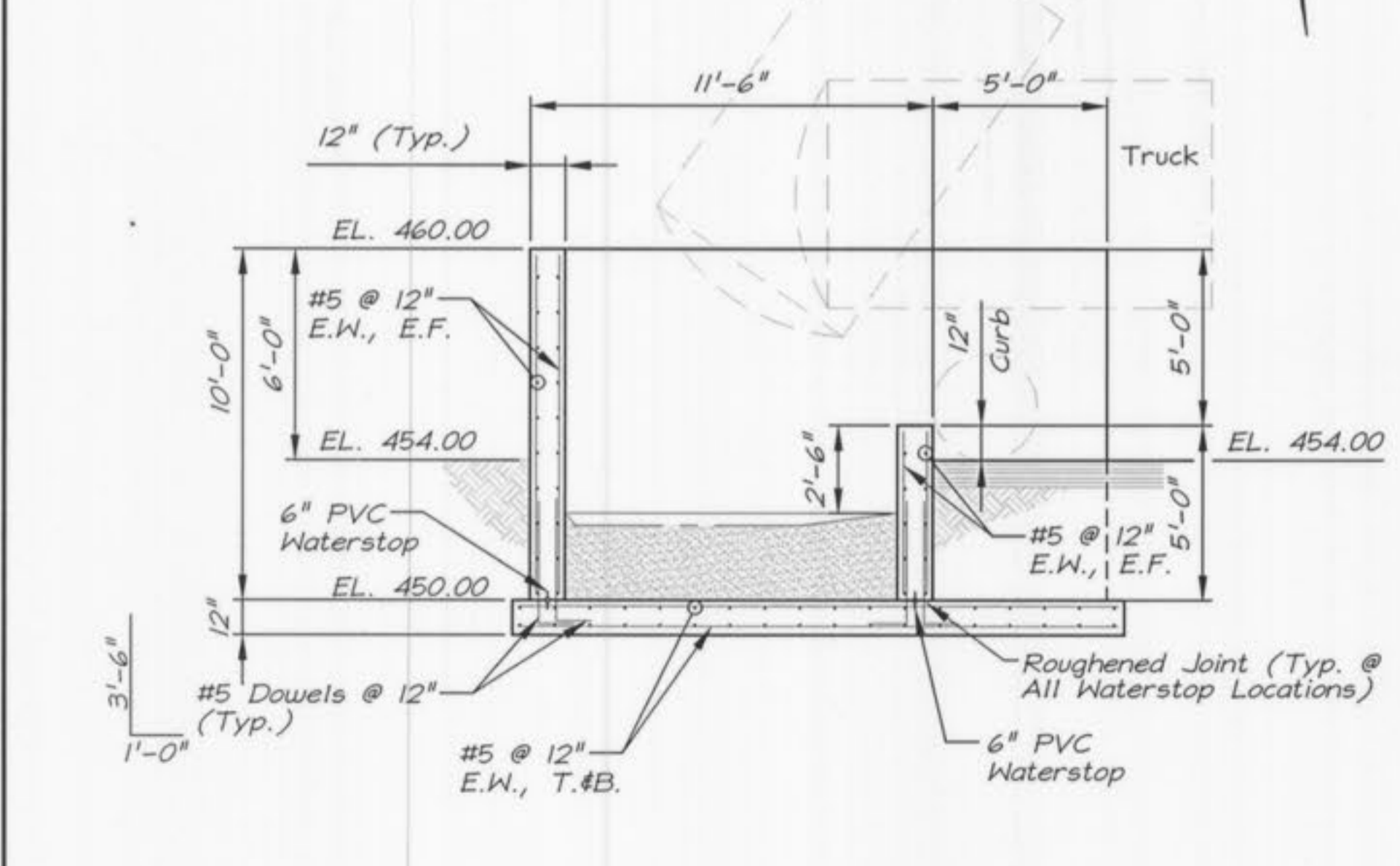
SEPTAGE RECEIVING STATION PLAN

SCALE: 1/4" = 1'-0"



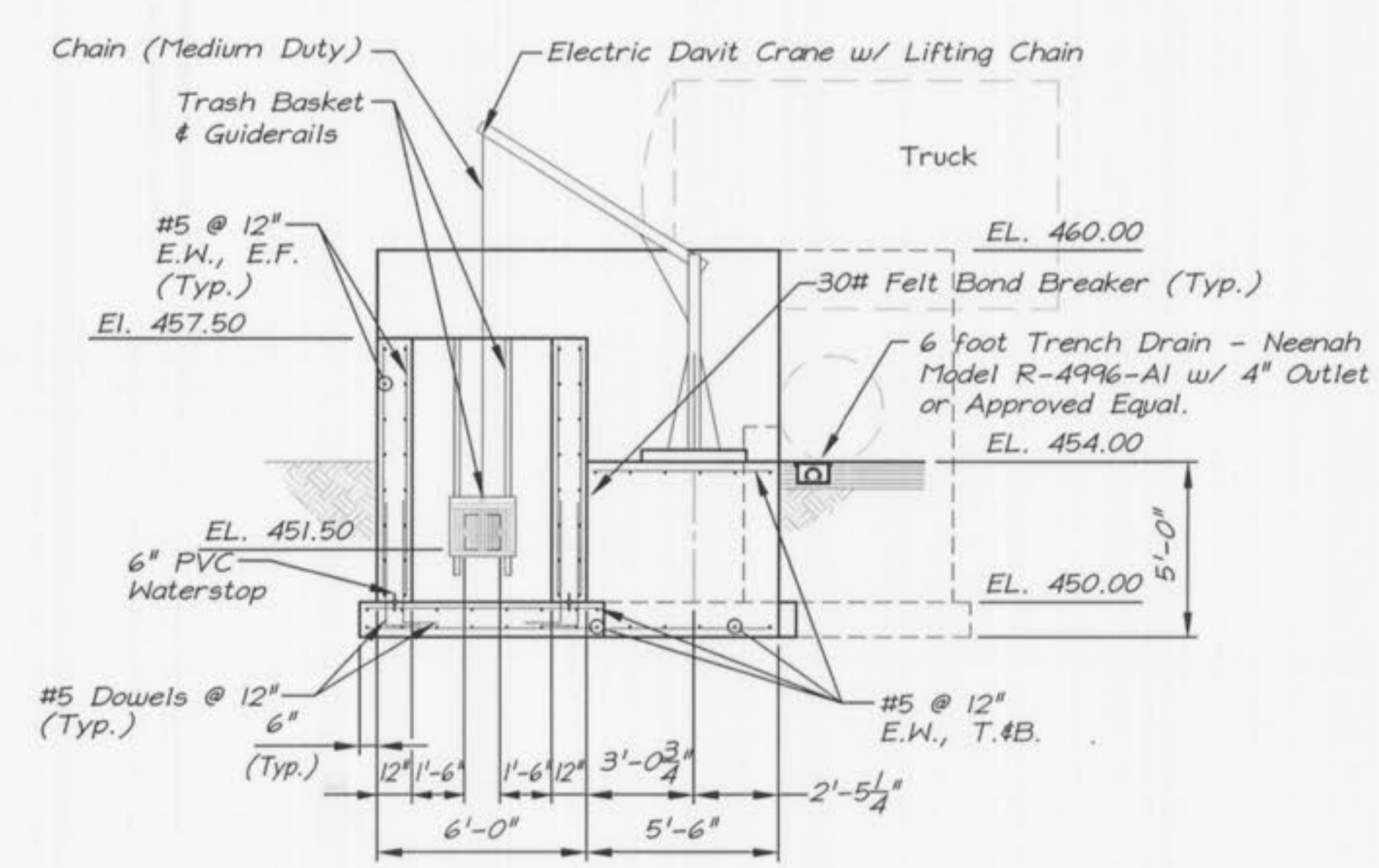
SECTION 1

SCALE: 1/4" = 1'-0"



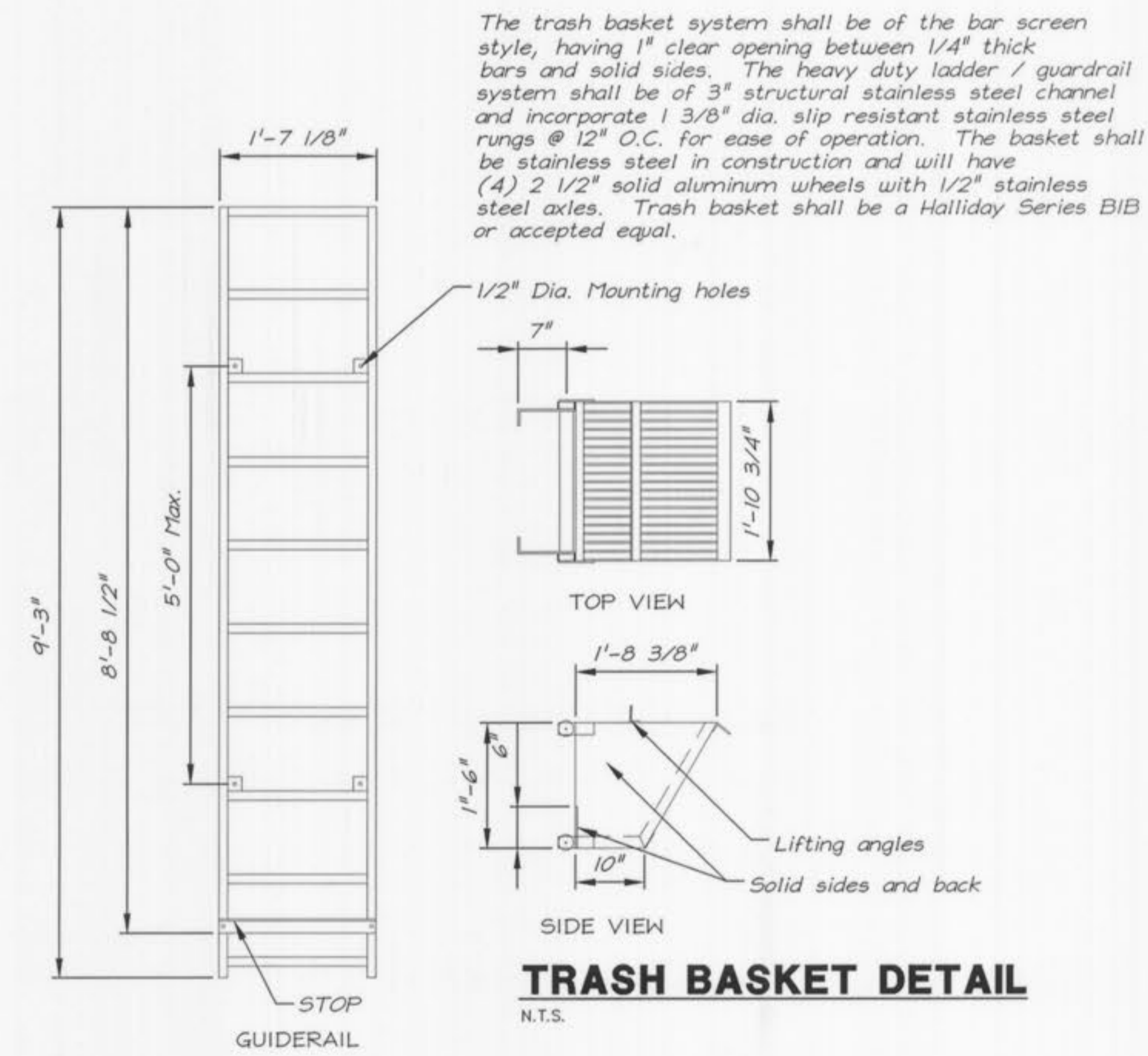
SECTION 2

SCALE: 1/4" = 1'-0"



SECTION 3

SCALE: 1/4" = 1'-0"



TRASH BASKET DETAIL

N.T.S.

The trash basket system shall be of the bar screen style, having 1" clear opening between 1/4" thick bars and solid sides. The heavy duty ladder / guardrail system shall be of 3" structural stainless steel channel and incorporate 1 3/8" dia. slip resistant stainless steel rungs @ 12" O.C. for ease of operation. The basket shall be stainless steel in construction and will have (4) 2 1/2" solid aluminum wheels with 1/2" stainless steel axles. Trash basket shall be a Halliday Series B1B or accepted equal.

The existence and location of any underground utility pipes, lines, or structures shown on these drawings are obtained by a search of the available records. The contractor is required to take due precautionary measures to protect the utility lines shown and all other lines not of record or not shown on these drawings by verification of their location in the field prior to the initiation of the actual portion of work. Contractor shall immediately repair any damaged utility caused by his activities.

GEORGE BUTLER ASSOCIATES, INC.
 Engineers • Architects
 Kansas • Missouri • Illinois

GBA

STATE OF MISSOURI
 ROBERT J. RUSSIA
 NUMBER
 E-2000-00000
 MISSOURI PROFESSIONAL ENGINEER
 16161

WASTEWATER TREATMENT PLANT EXPANSION
SEPTAGE RECEIVING STATION
PLAN, SECTIONS, AND DETAILS
 CITY OF FALLON, MISSOURI

JOB NO.: 9234
DATE: 10-08-2001
DESIGNED BY: DMH
DRAWN BY: ERK/DMH
CHECKED BY: RJR/TMS
SHEET NUMBER

C38.01

O'FALLON WASTEWATER TREATMENT PLANT EXPANSION SHEET 65 OF 68