

QTY	SP/ID	MARK	DESCRIPTION
1	CL-ASPHL	Y601	10" MJ C153 90 BEND, ALL CENTERS 9.5', 350 PSI (PI), 4-2-2-2
2	CL-ASPHL	Y602	10" MJ C153 45 BEND, ALL CENTERS 5', 350 PSI (PI), 4-2-2-2
7	CL-ASPHL	Y603	10" FST ESTRE PIPE (CL-50 0.29' 201', 2-2-2-2)
8	CL-ASPHL	X41G	10" MEGALUG ACCESSORY KIT, INCLUDING MEGALUG GLAND, SBR GASKET AND 8 BOLTS
1	CL-ASP	**X-3	10" MJ TAPPED FOR STUDS DWG P000097 MJ-FAB TAPPED FOR STUDS DWG P000097 PIPE CL-53 0.38' 1" OVERALL (7-5/8" L), W/STL COLLAR 6-1/2" FROM MJ-FAB FACE, 2-2-2-2/N
1	CL-ASP	**X-41	10" MJ TAPPED FOR STUDS DWG P000097 FLG TAPPED FOR STUDS DWG P000089 PIPE CL-53 0.38' 10" OVERALL (9-1/2" L), W/STL COLLAR 6" FROM FLG, 2-2-2-2/N

** - Indicates the item has been placed on order.

SPECIFICATION BOUNDARY DEFINITIONS

Boundary ID: CL-ASPHL Service type: PROCESS
 Boundary name: MEGALUG Service temp: 50
 Boundary unit: Environment: EXT/BURIED

Pipe lining: Single Thick C/L with Seal Coat: Black, 1-Coat, AMMA C104
 Pipe coating: Asphaltic Coated: Black, 1-Coat, 3-Avg, 1-Min
 Fitting lining: Double Thick C/L with Seal Coat: Black, 1-Coat, AMMA C104
 Fitting coating: Asphaltic Coated: Black, 1-Coat, 3-Avg, 1-Min

Gasket types

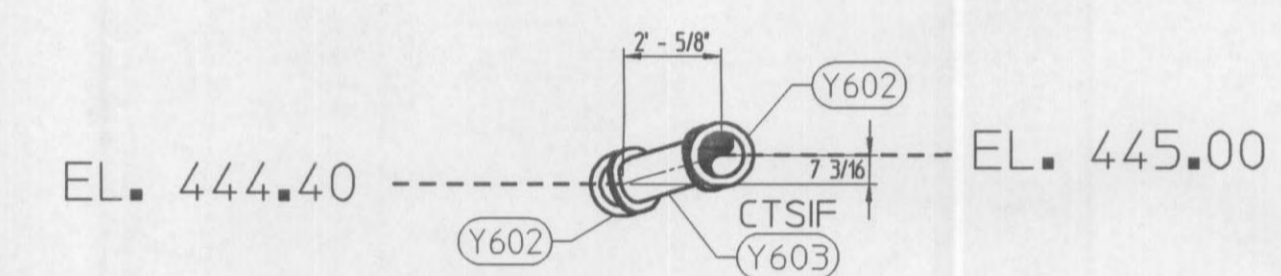
FAST GRIP - Fastgrip Gasket, Plain Rubber Styrene-Butadiene
 FRBELL FLEX-RING - Fastite Gasket, Plain Rubber Styrene-Butadiene
 MJ MEGALUG GLAND - Mechanical Joint Gasket, Plain Rubber Styrene-Butadiene

Boundary ID: CL-ASP Service type: PROCESS
 Boundary name: CL-ASP Service temp: 50
 Boundary unit: Environment: EXT/BURIED

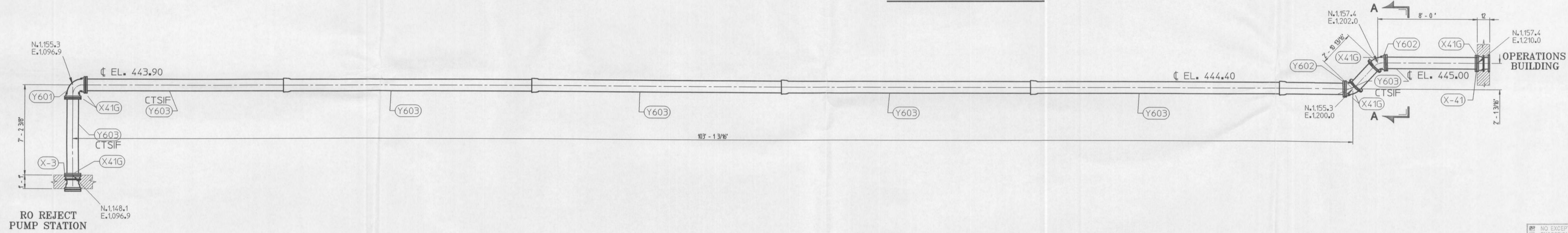
Pipe lining: Single Thick C/L with Seal Coat: Black, 1-Coat, AMMA C104
 Pipe coating: Asphaltic Coated: Black, 1-Coat, 3-Avg, 1-Min
 Fitting lining: Double Thick C/L with Seal Coat: Black, 1-Coat, AMMA C104
 Fitting coating: Asphaltic Coated: Black, 1-Coat, 3-Avg, 1-Min

Gasket types

FASTITE - Fastite Gasket, Plain Rubber Styrene-Butadiene
 FLEX-RING 4-12 - Fastite Gasket, Plain Rubber Styrene-Butadiene
 FLG LESS ACCESSORIES - none
 FRBELL FLEX-RING - Fastite Gasket, Plain Rubber Styrene-Butadiene
 GAGE FOR DRESSER - none
 MJ - Mechanical Joint Gasket, Plain Rubber Styrene-Butadiene
 RIGID GROOV LESS ACC - none



SECTION A - A



10" RO REJECT LINE

NO EXCEPTIONS NOTED
 EXCEPTIONS NOTED
 RETURNED FOR CORRECTION
 RECORD COPY NOT ACCEPTABLE
 RETURNED WITHOUT REVIEW

AUG 01 2002

REVIEW DOES NOT RELIEVE CONTRACTOR FROM RESPONSIBILITY FOR ERRORS, OMISSIONS, OR DEVIATIONS FROM CONTRACT REQUIREMENTS.
 BLACK & VEATCH

AMERICAN DUCTILE IRON PIPE
 A DIVISION OF AMERICAN CAST IRON PIPE COMPANY

PHONE: 1-800-442-2347 FAX: 1-800-442-2348
 P O BOX 2727 2916 16th STREET NORTH
 BIRMINGHAM, ALABAMA 35202 BIRMINGHAM, ALABAMA 35207

4'-6 1/2" Diameter Ductile Iron Pipe - Fastite Joint, Mechanical Joint, Flanged Joint, Flex-Ring Restrained Joint, Lok-Ring Restrained Joint, Flex-Lok Restrained Joint, ANSI A21.10, A21.53, & AMERICAN Standard Fittings, ANSI A21.4 Cement Lining, POLYBOND Lining, plus Special Coatings & Linings, American Flow Control - Valves And Hydrants

This drawing is a service to the customer as an aid in developing a detailed bill of material. The purchaser must verify correctness of design and dimensions. It is the responsibility of the purchaser to verify all details on receipt of prints. Changes desired shall be noted on a print and returned to American. Drawings will be revised per these changes. Drawings returned to American without signature or initial will be considered to have been reviewed by the customer with any required change notes.

REVISED BY:	DATE:	REV #	
Angella Neelley	04Jun2002	1	

CONDAIRE, INCORPORATED

WATER TREATMENT FACILITIES
 O'FALLON, MO
 10" RO REJECT LINE
 REF. DWGS. B2, B3, B4 & D3

*Approved
 7/26/14/02*