

QTY	SP/ID	MARK	DESCRIPTION
1	CL-ASP	Y501	30"X14" FRBELL MJ C110-CC REDUCER 26" 250 PSI 4-2-2-2
3	CL-ASPHL	Y502	14" MJ C153 90 BEND, ALL CENTERS 12" 350 PSI (R) 4-2-2-2
6	CL-ASPHL	Y503	14"X14"X14" MJ C153 TEE, ALL CENTERS 10.5" 350 PSI (R) 4-2-2-2
8	CL-ASP	Y506	14" FRBELL FBE PIPE CL-50 0.33" 19'10" 2-2-2-2
8	CL-ASP	Y508	14" HJPE DRPE PIPE CL-50 0.33" 18'7" 2-2-2-2
8	CL-ASP	Y509	14" FLG DRPE PIPE CL-53 0.42" 9'0-3/8" 2-2-2-2
24	CL-ASP	Y510	14" MEGALUG RETAINER GLAND W/COATING 2
24	CL-ASP	Y511	14" MEGALUG ACCESSORY KIT WITH SBR GASKET AND 10 BOLTS (MEGALUG RETAINER GLAND NOT INCLUDED)

\*\* - Indicates the item has been placed on order.

SPECIFICATION BOUNDARY DEFINITIONS

Boundary ID: CL-ASPHL Service type: PROCESS  
 Boundary name: MEGALUG Service temp: 50  
 Boundary unit: 1 Environment: EXT/BURIED

Pipe lining: Single Thick C/L with Seal Coat, Black, 1-Coat, AMMA C104  
 Pipe coating: Asphaltic Coated: Black, 1-Coat, 3-Avg, 1-Min  
 Filling lining: Double Thick C/L with Seal Coat, Black, 1-Coat, AMMA C104  
 Filling coating: Asphaltic Coated: Black, 1-Coat, 3-Avg, 1-Min

Gasket types  
 FAST GRIP - Fastgrip Gasket, Plain Rubber Styrene-Butadiene  
 FRBELL FLEX-RING - Fastite Gasket, Plain Rubber Styrene-Butadiene  
 MJ MEGALUG GLAND - Mechanical Joint Gasket, Plain Rubber Styrene-Butadiene

Boundary ID: CL-ASP Service type: PROCESS  
 Boundary name: CL-ASP Service temp: 50  
 Boundary unit: 1 Environment: EXT/BURIED

Pipe lining: Single Thick C/L with Seal Coat, Black, 1-Coat, AMMA C104  
 Pipe coating: Asphaltic Coated: Black, 1-Coat, 3-Avg, 1-Min  
 Filling lining: Double Thick C/L with Seal Coat, Black, 1-Coat, AMMA C104  
 Filling coating: Asphaltic Coated: Black, 1-Coat, 3-Avg, 1-Min

Gasket types  
 FASTITE - Fastite Gasket, Plain Rubber Styrene-Butadiene  
 FLEX-RING 4-12 - Fastite Gasket, Plain Rubber Styrene-Butadiene  
 FLG LESS ACCESSORIES - none  
 FRBELL FLEX-RING - Fastite Gasket, Plain Rubber Styrene-Butadiene  
 GAGE FOR DRESSER - none  
 MJ - Mechanical Joint Gasket, Plain Rubber Styrene-Butadiene  
 RIGID GROOV LESS ACC - none

NO EXCEPTIONS NOTED  
 EXCEPTIONS NOTED  
 RETURNED FOR CORRECTION  
 RECORD COPY NOT ACCEPTABLE  
 RETURNED WITHOUT REVIEW

AUG 0 1 2002

REVIEW DOES NOT RELIEVE CONTRACTOR FROM RESPONSIBILITY FOR ERRORS, OMISSIONS, OR DEVIATIONS FROM CONTRACT REQUIREMENTS.  
 BLACK & VEATCH

RESTRAINED JOINT PIPING (NE)  
 (Nominal Extension)

Flex-Ring and Lok-Ring joint pipe designated "NE", have been detailed on this drawing with a nominal joint extension or creep allowance at each joint of 1/4". This joint extension or creep is anticipated due to normal installation practice and tolerance in the joint itself.

NOTE:  
 ALL PIPE LOCATIONS & DIMENSIONS  
 HAVE BEEN ESTIMATED FROM CONTRACT  
 DRAWINGS. PLEASE VERIFY.

**AMERICAN DUCTILE IRON PIPE**  
 A DIVISION OF AMERICAN CAST IRON PIPE COMPANY

PHONE: 1-800-442-2347 FAX: 1-800-442-2348

P O BOX 2727 BIRMINGHAM, ALABAMA 35207 2916 16th STREET NORTH BIRMINGHAM, ALABAMA 35207

4'-6" Diameter Ductile Iron Pipe - Fastite Joint, Mechanical Joint, Flanged Joint, Flex-Ring Restrained Joint, Lok-Ring Restrained Joint, Flex-Lok Restrained Joint, ANSI A21.10, A21.53, & AMERICAN Standard Fittings, ANSI A21.4 Cement lining, POLYBOND Lining, plus Special Coatings & Linings, American Flow Control - Valves And Hydrants

This drawing is a service to the customer as an aid in developing a detailed bill of material. The purchaser must verify correctness of design and dimensions. It is the responsibility of the purchaser to verify all details on receipt of prints. Changes desired shall be noted on a print and returned to American. Drawings will be revised per these changes. Drawings returned to American without signature or initial will be considered to have been reviewed by the customer with any required change notes.

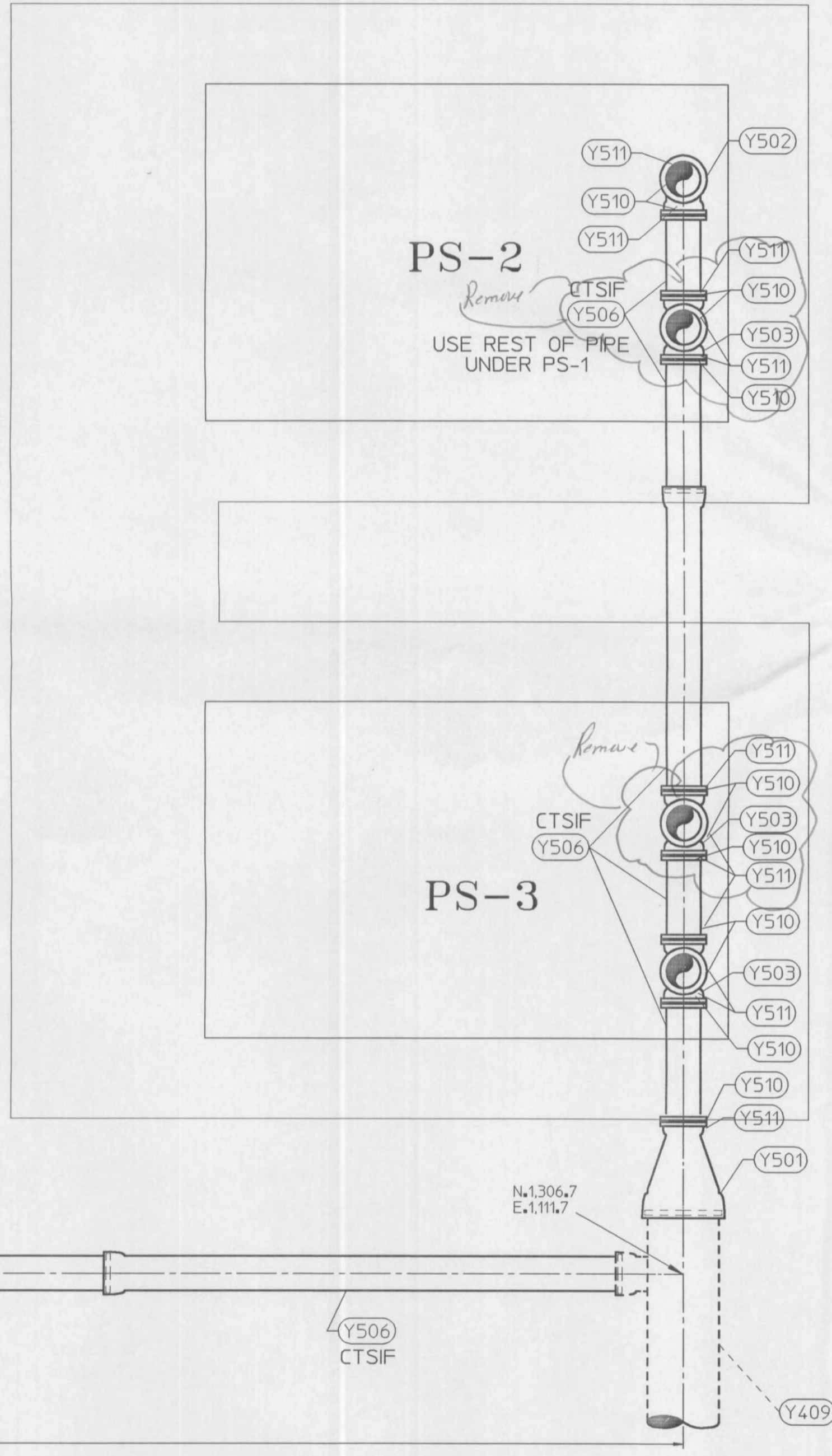
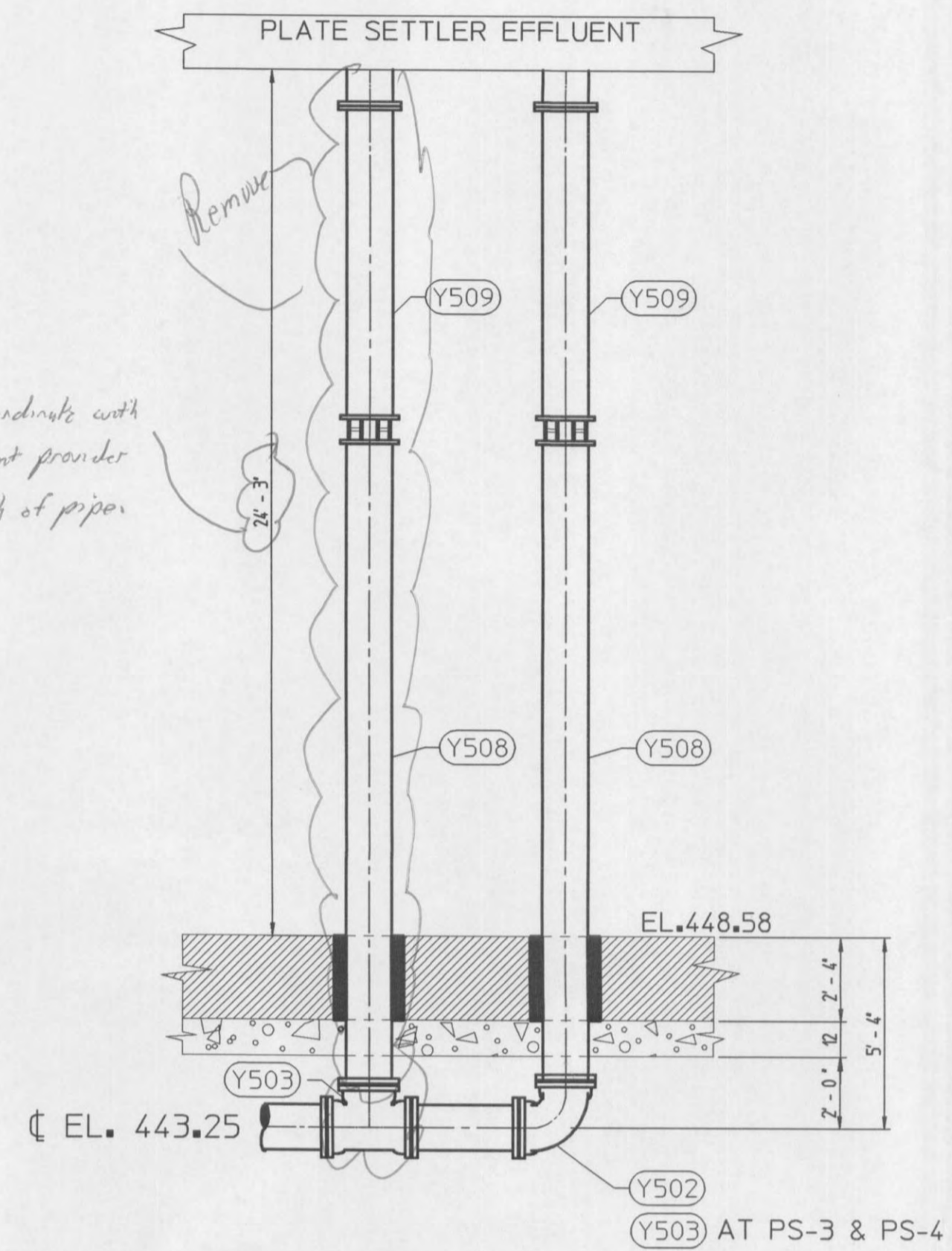
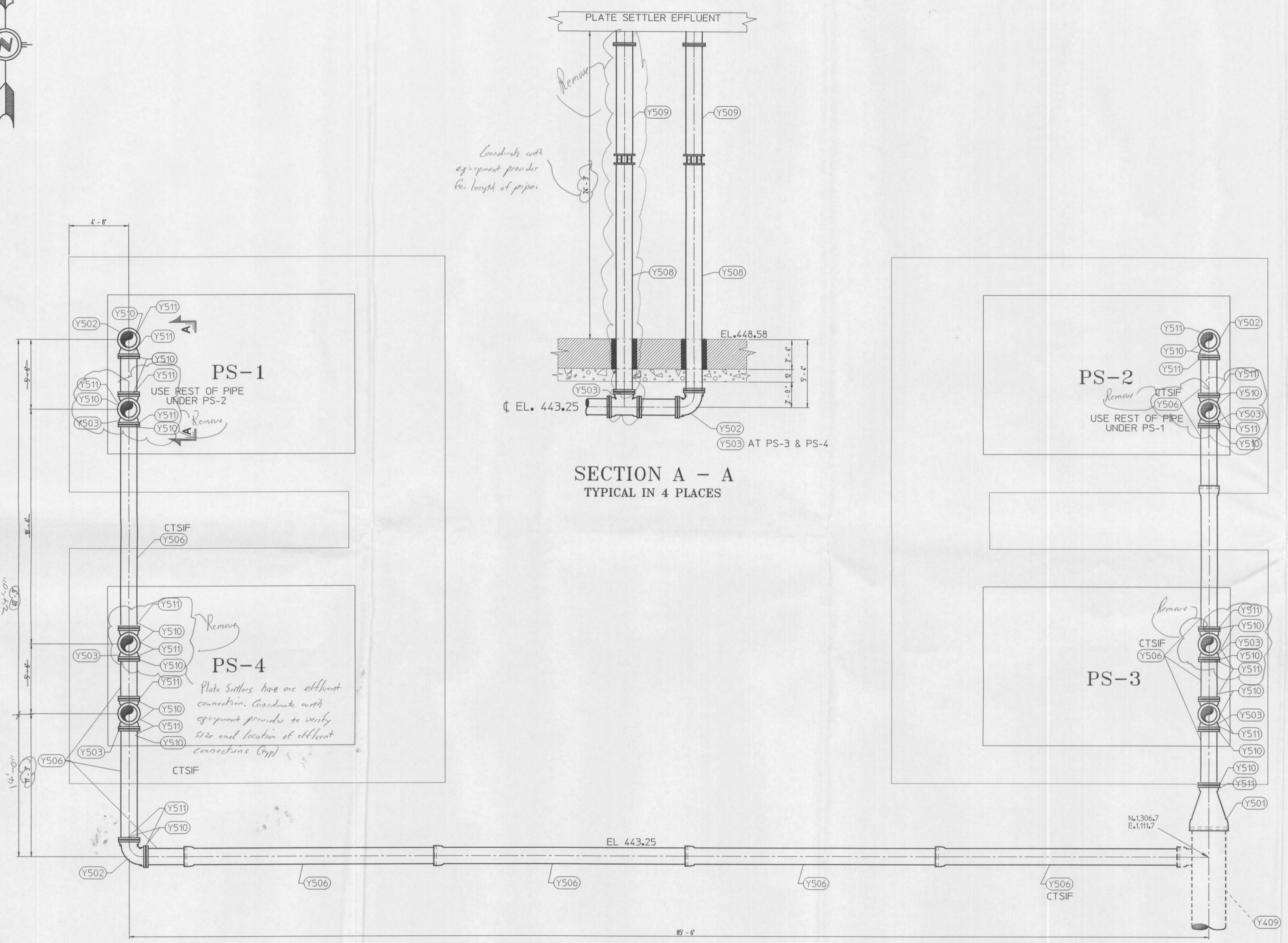
REVISED BY:	DATE:	REV #
Angelia Neelley	18Jun2002	3
Angelia Neelley	03Jun2002	2
Daniel Jones	16May2002	1

CONDAIRE, INCORPORATED

WATER TREATMENT FACILITIES  
 O'FALLON, MO  
 14" PLATE SETTLER EFFLUENT  
 REF. DWGS. B2, B7 & Y4



DIMENSIONS TYP. OF 2



14" PLATE SETTLER EFFLUENT

CONTINUES ON DWG Y4