

Project Number KMO01998		BILL OF MATERIAL	
Drawing Rev. 1		Drawing Num. C02010-Y4	
QTY	SP/ID	MARK	DESCRIPTION
1	CL-ASP	Y401	30" FBRELL FBE C153 90 BEND, CENTER TO FBRELL SOCKET 22.75" CENTER TO FBE END 31.75", 250 PSI, 4-2-2-2
1	CL-ASP	Y402	30" DI FLEDFLEX RING
1	CL-ASP	Y403	30" FBRELL M/JE PIPE CL-50 0.39" 19.8-3/4", 2-2-2-2
2	CL-ASP	Y404	30" FBRELL FBE PIPE CL-50 0.39" 19.8-3/4", 2-2-2-2
1	CL-ASP	Y405	30" FBRELL FBE, W/STPPE GAGED FULL PIPE CL-50 0.39" 19.8-3/4", 2-2-2-2/G
1	CL-ASP	Y409	30" FBE FBE PIPE CL-53 0.51" 14.0", W/14" FBRELL WELDED-ON OUTLET, 111-7/8" FROM FBE & 0 DEG FROM TOC, 2-2-2-2
1	CL-ASP	**X-9	30" M JAPPED FOR STUDS DWG P000097 M JAPPED FOR STUDS DWG P000097 C10 STATIC CAST PIPE, 13'0" OVERALL (7'11"), W/DI COLLAR 7-1/2" FROM MJ FACE, 250 PSI, 4-2-2-2/N

\*\* - Indicates the item has been placed on order.

SPECIFICATION BOUNDARY DEFINITIONS

Boundary ID: CL-ASP Service type: PROCESS  
 Boundary name: COUPLED JOINT Service temp: 50  
 Boundary unit: 1 Environment: EXT/BURIED

Pipe lining: Single Thick C/L with Seal Coat: Black, 1-Coat, AMMA C104  
 Pipe coating: Asphaltic Coated: Black, 1-Coat, 3-Avg, 1-Min  
 Fitting lining: Double Thick C/L with Seal Coat: Black, 1-Coat, AMMA C104  
 Fitting coating: Asphaltic Coated: Black, 1-Coat, 3-Avg, 1-Min

Gasket types

FBRELL FLEX-RING - Fastite Gasket, Plain Rubber Styrene-Buladiene  
 M J COUPLED - Mechanical Joint Gasket, Plain Rubber Styrene-Buladiene

Boundary ID: CL-ASP Service type: PROCESS  
 Boundary name: CL-ASP Service temp: 50  
 Boundary unit: 1 Environment: EXT/BURIED

Pipe lining: Single Thick C/L with Seal Coat: Black, 1-Coat, AMMA C104  
 Pipe coating: Asphaltic Coated: Black, 1-Coat, 3-Avg, 1-Min  
 Fitting lining: Double Thick C/L with Seal Coat: Black, 1-Coat, AMMA C104  
 Fitting coating: Asphaltic Coated: Black, 1-Coat, 3-Avg, 1-Min

Gasket types

FASTITE - Fastite Gasket, Plain Rubber Styrene-Buladiene  
 FLEX-RING 4-12 - Fastite Gasket, Plain Rubber Styrene-Buladiene  
 FLG LESS ACCESSORIES - none  
 FBRELL FLEX-RING - Fastite Gasket, Plain Rubber Styrene-Buladiene  
 GAGE FOR DRESSER - none  
 M J - Mechanical Joint Gasket, Plain Rubber Styrene-Buladiene  
 RIGID GROOV LESS ACC - none

RESTRAINED JOINT PIPING (NE)  
 (Nominal Extension)

Flex-Ring and Lok-Ring joint pipe, designated 'NE', have been detailed on this drawing with a nominal joint extension or creep allowance at each joint of 1/4". This joint extension or creep is anticipated due to normal installation practice and tolerance in the joint itself.

NO EXCEPTIONS NOTED  
 EXCEPTIONS NOTED  
 RETURNED FOR CORRECTION  
 RECORD COPY NOT ACCEPTABLE  
 RETURNED WITHOUT REVIEW

AUG 01 2002

REVIEW DOES NOT RELIEVE CONTRACTOR FROM RESPONSIBILITY FOR ERRORS, OMISSIONS OR DEVIATIONS FROM CONTRACT REQUIREMENTS. BLACK & VEATCH

OPERATIONS BUILDING

This drawing has been reviewed and found in general conformance with the contract documents.

APPROVED AS NOTED  
 APPROVED AS NOTED  
 REVISE AND RESUBMIT

KGI CONSTRUCTION CO DATE  
 SPEC. SECTION

**AMERICAN DUCTILE IRON PIPE**  
 A DIVISION OF AMERICAN CAST IRON PIPE COMPANY

PHONE: 1-800-442-2347 FAX: 1-800-442-2348  
 P O BOX 2727 BIRMINGHAM, ALABAMA 35202 2916 16th STREET NORTH BIRMINGHAM, ALABAMA 35207

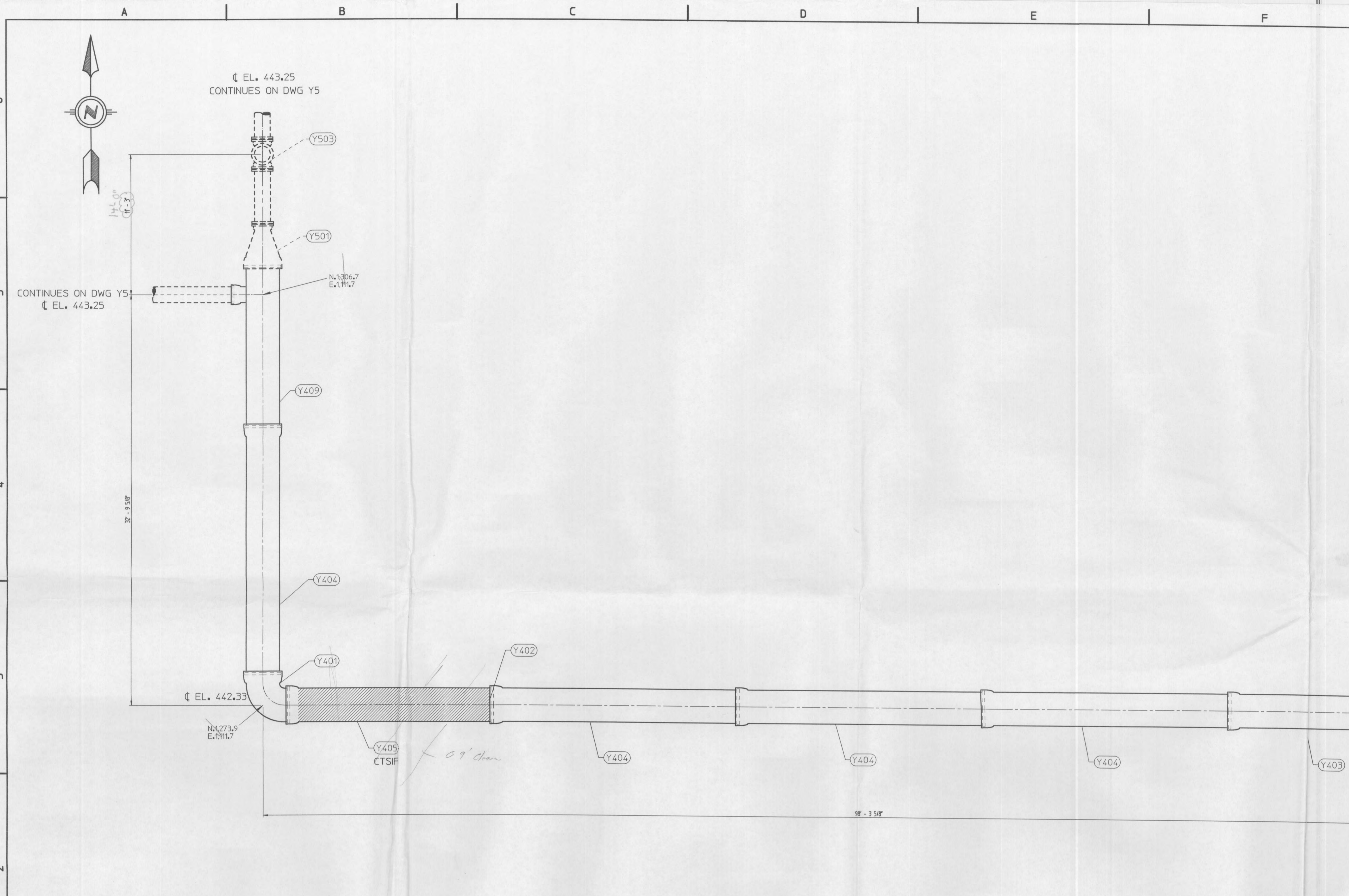
4'-6" Diameter Ductile Iron Pipe - Fastite Joint, Mechanical Joint, Flanged Joint  
 Flex-Ring Restrained Joint, Lok-Ring Restrained Joint, Flex-Lok Restrained Joint  
 ANSI A21.10, A21.53, & AMERICAN Standard Fittings  
 ANSI A21.4 Cement Lining, POLYBOND Lining, plus Special Coatings & Linings  
 American Flow Control - Valves And Hydrants

This drawing is a service to the customer as an aid in developing a detailed bill of material. The purchaser must verify correctness of design and dimensions. It is the responsibility of the purchaser to verify all details on receipt of prints. Changes desired shall be noted on a print and returned to American. Drawings will be revised per these changes. Drawings returned to American without signature or initial will be considered to have been reviewed by the customer with any required change noted.

REVISED BY:	DATE:	REV #
Angelia Neelley	03Jun2002	1

CONDAIRE, INCORPORATED

WATER TREATMENT FACILITIES  
 O'FALLON, MO  
 30" FILTER INFLUENT  
 REF. DWGS. B2, B4, B7 & D3



30" FILTER INFLUENT

Approved  
 7/24/02