

QTY	SP/BID	MARK	DESCRIPTION
5	CL-ASP	Y801	10' FRP PIPE CL-50 0.79" 18", 2-2-2-2
1	CL-ASP	Y802	10' FRP PIPE CL-50 0.79" 18", 2-2-2-2
1	ASP-ASP	Y803	20' FRP DISHED PLUG, 350 PSI, 1-2-2-2
1	CL-ASPMI	Y804	20" MJ C153 45 BEND, ALL CENTERS 8", 350 PSI (R), 4-2-2-2
1	CL-ASP	Y805	10' FRP PIPE CL-50 0.79" 20", 2-2-2-2
1	CL-ASP	Y806	20' FRBELL MJ PIPE CL-300/50 0.36" 18.6-11/16", 2-2-2-2
1	CL-ASP	Y807	18" MJ C153 22.5 BEND, ALL CENTERS 7.5", 350 PSI (R), 4-2-2-2
1	CL-ASP	Y808	18" FRP PIPE CL-50 0.35" 5/4-5/16", 2-2-2-2
1	CL-ASP	Y809	18" FRBELL MJ PIPE CL-50 0.35" 19.9", 2-2-2-2
1	CL-ASPMI	Y810	10" MJ C153 90 BEND, ALL CENTERS 9.5", 350 PSI (P), 4-2-2-2
1	CL-ASP	Y811	24"X24"X24" FRBELL C110 TEE, ALL CENTERS 22", 350 PSI, 4-2-2-2
15	CL-ASPMI	Y812	10' MEGALUG ACCESSORY KIT, INCLUDING MEGALUG GLAND, SBR GASKET AND 8 BOLTS
1	CL-ASP	Y813	24"X20" FRP C110-CC REDUCER 3/4", 350 PSI, 4-2-2-2
1	CL-ASP	Y814	24" FRBELL FRP C110 45 BEND, CENTER TO FRBELL SOCKET 1", CENTER TO FRP END 19", 350 PSI, 4-2-2-2
1	CL-ASP	Y815	24"X24"X18" FRBELL C110 TEE, ALL CENTERS 22", 350 PSI, 4-2-2-2
1	CL-ASP	Y816	24" FRP PIPE CL-50 0.38" 10/4-1/8", 2-2-2-2
1	CL-ASP	Y817	24" FRP PIPE CL-50 0.38" 5/8", 2-2-2-2
1	CL-ASP	Y818	24" FRP PIPE CL-50 0.38" 3/11-3/8", 2-2-2-2
1	ASP-ASP	Y819	24" FRP PLUG, 350 PSI, 1-2-2-2
1	CL-ASP	Y820	24" FRBELL C153 90 BEND, ALL CENTERS 17", 350 PSI, 4-2-2-2
1	CL-ASP	Y821	24" FLG FRP PIPE CL-53 0.47" 2"10-3/4", 2-2-2-2
2	CL-ASPMI	Y822	18 MEGALUG RETAINER GLAND W/COATING 2
1	ASP-ASP	Y823	18" FRP DISHED PLUG, 350 PSI, 1-2-2-2
2	CL-ASPMI	Y824	18" MEGALUG ACCESSORY KIT WITH SBR GASKET AND 12 BOLTS (MEGALUG RETAINER GLAND NOT INCLUDED)
1	CL-ASP	Y825	20" FRBELL FRP PIPE CL-53 0.45" 19.9", W/10" FR WELDED-ON OUTLET, 20" FROM FRP & 0 DEG FROM TDC, W/10" FR WELDED-ON OUTLET, 20-15/16" FROM FRP & 0 DEG FROM TDC, W/10" FR WELDED-ON OUTLET, 113" FROM FRP & 0 DEG FROM TDC, W/10" FR WELDED-ON OUTLET, 154"
1	CL-ASP	Y826	20" FRBELL MJ PIPE CL-53 0.45" 7/2-3/4", W/10" FR WELDED-ON OUTLET, 29" FROM FRP & 0 DEG FROM TDC, 2-2-2-2
2	CL-ASPMI	Y827	20 MEGALUG RETAINER GLAND W/COATING 2
2	CL-ASPMI	Y828	20" MEGALUG ACCESSORY KIT WITH SBR GASKET AND 14 BOLTS (MEGALUG RETAINER GLAND NOT INCLUDED)
1	CL-ASP	X44	24" FRBELL FRP PIPE CL-53 0.47" 5/6-1/16" OVERALL (4/9-3/4" L), W/STL COLLAR 7/4-7/8" FROM FRP, 2-2-2-2
5	CL-ASP	**X-23	10" MJ TAPPED FOR STUDS DWG P000097, MJ-FAB TAPPED FOR STUDS DWG P000097, PIPE CL-53 0.38" 1/2" OVERALL (8-5/8" L), W/STL COLLAR 7" FROM MJ-FAB FACE, 2-2-2-2/N

** - Indicates the item has been placed on order.

SPECIFICATION BOUNDARY DEFINITIONS

Boundary ID: CL-ASPMI	Service type: PROCESS
Boundary name: MEGALUG	Service temp: 50
Boundary unit: 1	Environment: EXT/BURIED

Pipe lining: Single Thick C/L with Seal Coat: Black, 1-Coat, AWWA C104
 Pipe coating: Asphaltic Coated: Black, 1-Coat, 3-Avg, 1-Min
 Fitting lining: Double Thick C/L with Seal Coat: Black, 1-Coat, 1-Coat, AWWA C104
 Fitting coating: Asphaltic Coated: Black, 1-Coat, 3-Avg, 1-Min

Gasket types

FAST GRIP - Fastgrip Gasket, Plain Rubber Styrene-Butadiene
 FRBELL FLEX-RING - Fastite Gasket, Plain Rubber Styrene-Butadiene
 MJ MEGALUG GLAND - Mechanical Joint Gasket, Plain Rubber Styrene-Butadiene

Boundary ID: CL-ASP	Service type: PROCESS
Boundary name: CL-ASP	Service temp: 50
Boundary unit: 1	Environment: EXT/BURIED

Pipe lining: Single Thick C/L with Seal Coat: Black, 1-Coat, AWWA C104
 Pipe coating: Asphaltic Coated: Black, 1-Coat, 3-Avg, 1-Min
 Fitting lining: Double Thick C/L with Seal Coat: Black, 1-Coat, 1-Coat, AWWA C104
 Fitting coating: Asphaltic Coated: Black, 1-Coat, 3-Avg, 1-Min

Gasket types

FASTITE - Fastite Gasket, Plain Rubber Styrene-Butadiene
 FLEX-RING 4-12 - Fastite Gasket, Plain Rubber Styrene-Butadiene
 FLG LESS ACCESSORIES - none
 FRBELL FLEX-RING - Fastite Gasket, Plain Rubber Styrene-Butadiene
 GAGE FOR DRESSER - none
 MJ - Mechanical Joint Gasket, Plain Rubber Styrene-Butadiene
 RIGID GROOV LESS ACC - none

Boundary ID: ASP-ASP	Service type: PROCESS
Boundary name: ASP-ASP	Service temp: 50
Boundary unit: 1	Environment: EXT/BURIED

Pipe lining: Asphaltic Lined: Black, 1-Coat, 3-Avg, 1-Min
 Pipe coating: Asphaltic Coated: Black, 1-Coat, 3-Avg, 1-Min
 Fitting lining: Asphaltic Lined: Black, 1-Coat, 3-Avg, 1-Min
 Fitting coating: Asphaltic Coated: Black, 1-Coat, 3-Avg, 1-Min

Gasket types

FASTITE - Fastite Gasket, Plain Rubber Styrene-Butadiene
 FLEX-RING 4-12 - Fastite Gasket, Plain Rubber Styrene-Butadiene
 FLG LESS ACCESSORIES - none
 FRBELL FLEX-RING - Fastite Gasket, Plain Rubber Styrene-Butadiene
 MJ - Mechanical Joint Gasket, Plain Rubber Styrene-Butadiene
 RIGID GROOV LESS ACC - none

AUG 01 2002

REVIEW DOES NOT RELIEVE CONTRACTOR FROM RESPONSIBILITY FOR ERRORS, OMISSIONS, OR DEVIATIONS FROM CONTRACT REQUIREMENTS.

BLACK & VEATCH

AMERICAN DUCTILE IRON PIPE
 A DIVISION OF AMERICAN CAST IRON PIPE COMPANY

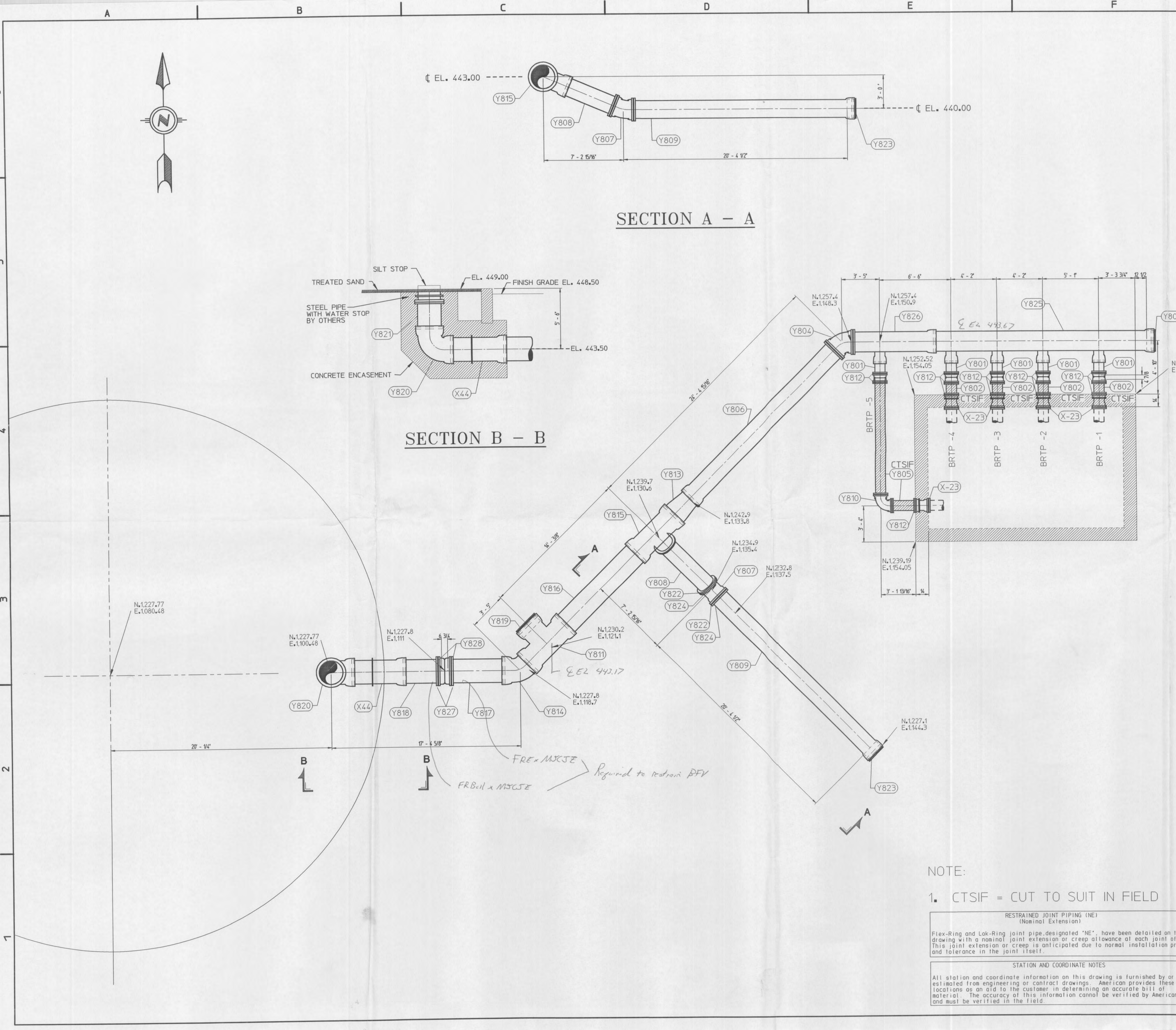
PHONE: 1-800-442-2347 FAX: 1-800-442-2348

P O BOX 2727 BIRMINGHAM, ALABAMA 35202 2916 16th STREET NORTH BIRMINGHAM, ALABAMA 35207

4'-6 1/2" Diameter Ductile Iron Pipe, Fastite Joint, Mechanical Joint, Flanged Joint, Flex-Ring Restrained Joint, Lok-Ring Restrained Joint, Flex-Lok Restrained Joint, ANSI A21.10, A21.53, & AMERICAN Standard Fittings, ANSI A21.4 Cement Lining, POLYBOND Lining, plus Special Coatings & Linings, American Flow Control - Valves And Hydrants

REVISED BY:	DATE:	REV #	CONDAIRE, INCORPORATED
Angelia Neelley	18 Jun 2002	2	WATER TREATMENT FACILITIES O'FALLON, MO FUTURE RES INFLUENT, RES INFLUENT RES TRANSFER PS DISCHARGE REF. DWGS. B1, E1 & G2
Angelia Neelley	04 Jun 2002	1	

DRAWN BY: Angelia Neelley SCALE: NTS PROJECT NUMBER: KM001998 C02010-Y8
 DATE DRAWN: 02/04/2002



SECTION A - A

SECTION B - B

NOTE:

1. CTSIF = CUT TO SUIT IN FIELD

RESTRAINED JOINT PIPING (NE)
 (Nominal Extension)

Flex-Ring and Lok-Ring joint pipe, designated "NE", have been detailed on this drawing with a nominal joint extension or creep allowance at each joint of 1/4". This joint extension or creep is anticipated due to normal installation practice and tolerance in the joint itself.

STATION AND COORDINATE NOTES

All station and coordinate information on this drawing is furnished by or estimated from engineering or contract drawings. American provides these locations as an aid to the customer in determining an accurate bill of material. The accuracy of this information cannot be verified by American and must be verified in the field.