

QTY	SP/BID	MARK	DESCRIPTION
3	cl-osp	Y1101	12" M.I. C153 90 BEND, ALL CENTERS 10.5', 350 PSI. (P), 4-2-2-2
3	cl-osp	Y1102	12" M.I.P.E. PIPE CL-50, 0.31" 12.5'-3/4", 2-2-2-2
3	cl-osp	Y1103	12" FLG M.I.P.E. PIPE CL-53 0.4" 12.5'-11/16", 2-2-2-2

** - Indicates the item has been placed on order.

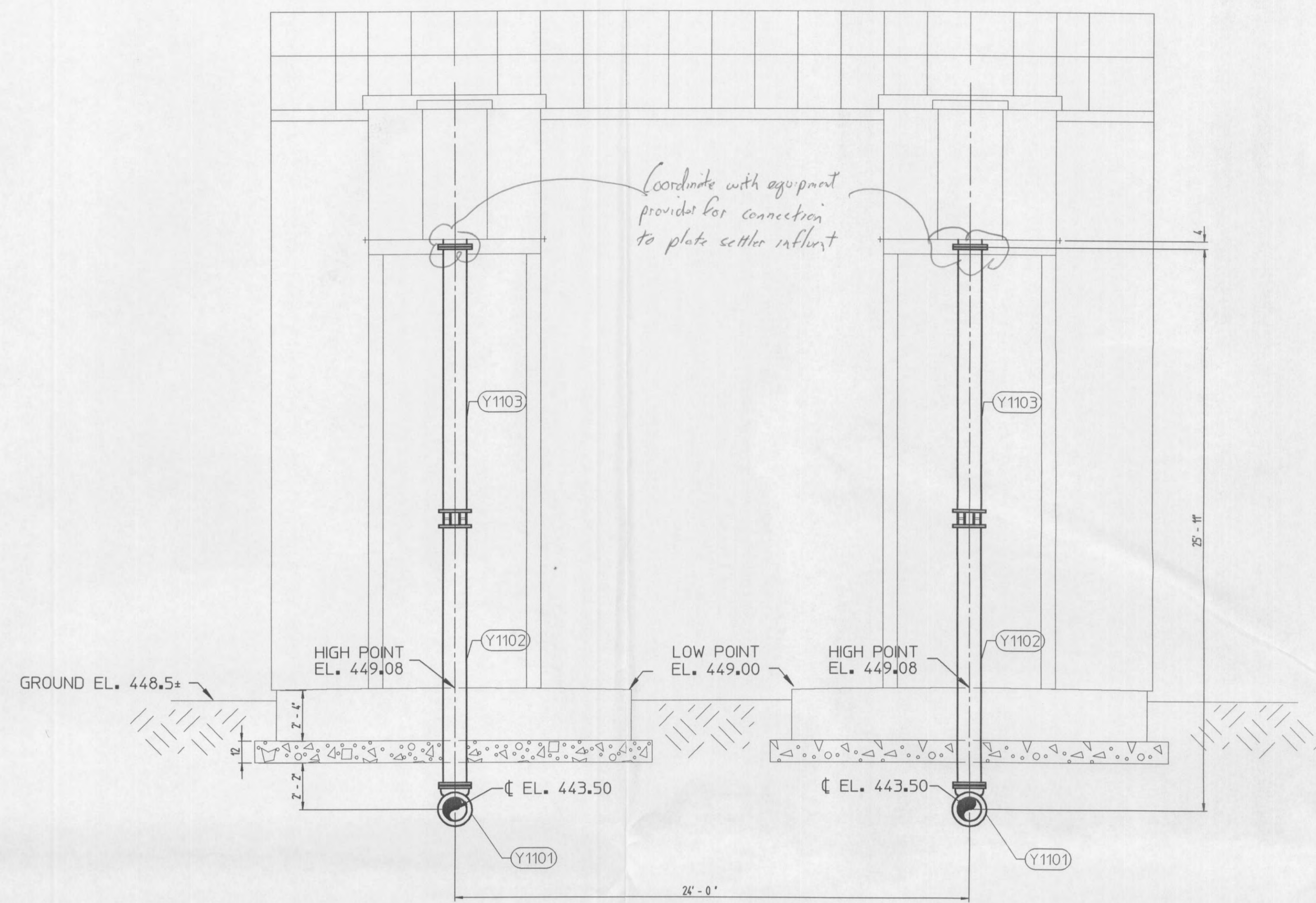
SPECIFICATION BOUNDARY DEFINITIONS

Boundary ID: cl-osp Service type: PROCESS
 Boundary name: cl-osp Service temp: 50
 Boundary unit: 1 Environment: EXT/BURIED

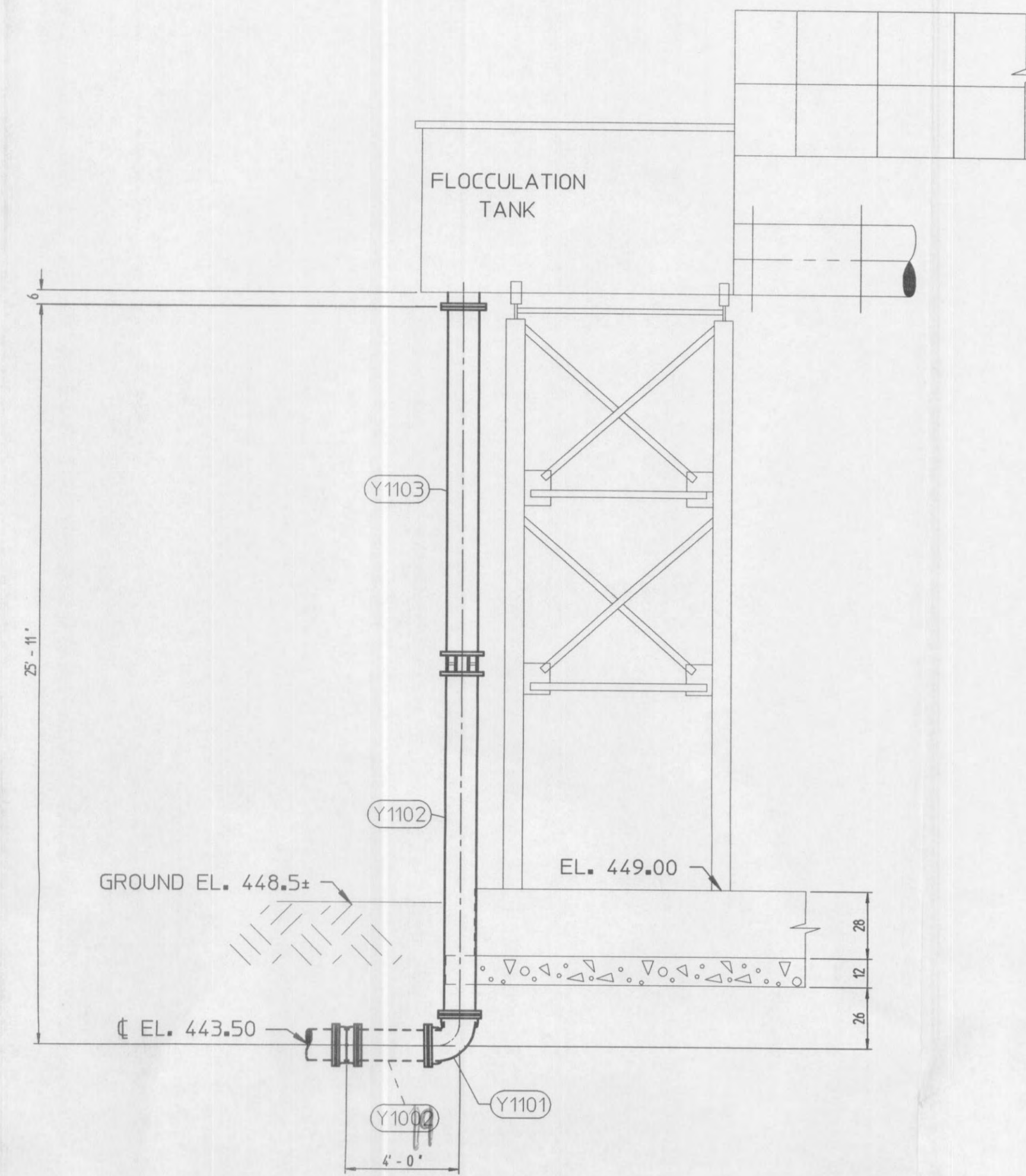
Pipe lining: Single Thick C/L with Seal Coat Black, 1-Coat, AMMA C104
 Pipe coating: Asphaltic Coated Black, 1-Coat, 3-Avg, 1-Min
 Fitting lining: Double Thick C/L with Seal Coat Black, 1-Coat, AMMA C104
 Fitting coating: Asphaltic Coated Black, 1-Coat, 3-Avg, 1-Min

Gasket types

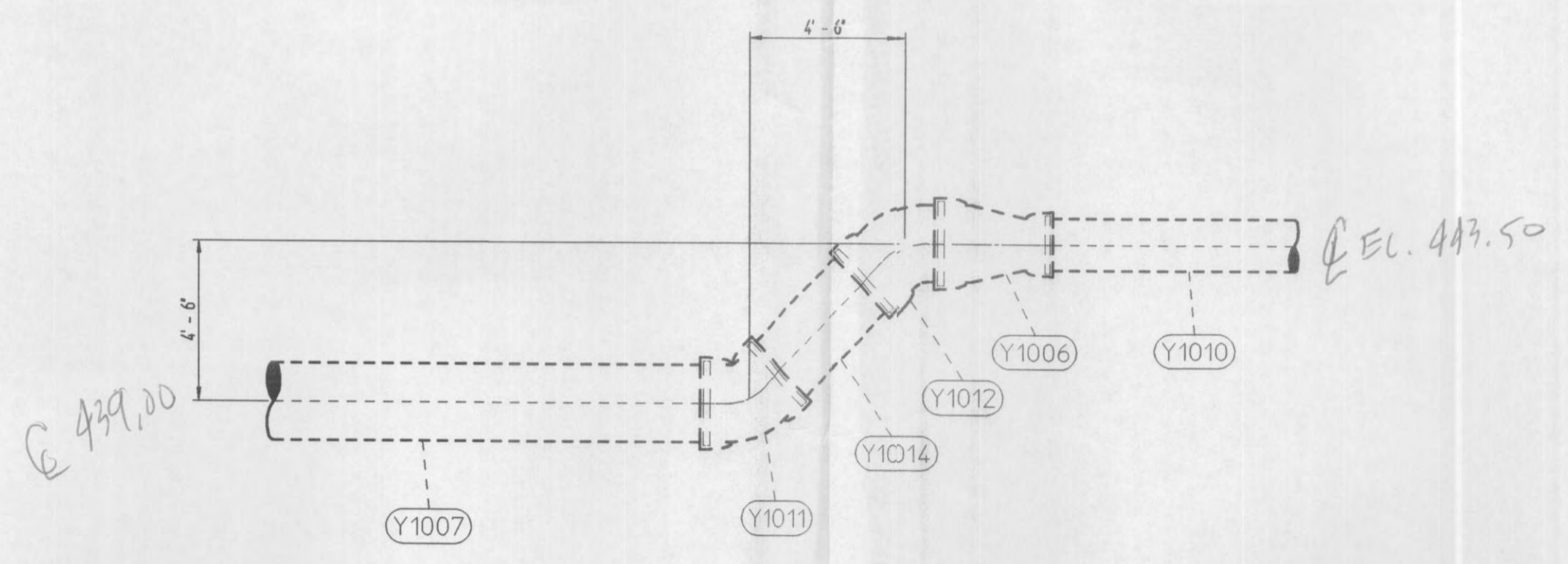
FASTITE - Fastite Gasket, Plain Rubber Styrene-Butadiene
 FLEX-RING 4-12 - Fastite Gasket, Plain Rubber Styrene-Butadiene
 FLG LESS ACCESSORIES - none
 FRBELL FLEX-RING - Fastite Gasket, Plain Rubber Styrene-Butadiene
 MJ REGALUS GLAND - Mechanical Joint Gasket, Plain Rubber Styrene-Butadiene
 RIGID GROOV LESS ACC - none



SECTION A - A
PLAN VIEW SHOWN ON Y10



SECTION B - B
PLAN VIEW SHOWN ON Y10



SECTION C - C
PLAN VIEW SHOWN ON Y10

AAN
Jun 6/14/02

AMERICAN DUCTILE IRON PIPE
 A DIVISION OF AMERICAN CAST IRON PIPE COMPANY

PHONE: 1-800-442-2347 FAX: 1-800-442-2348
 P O BOX 2727 2916 16th STREET NORTH
 BIRMINGHAM, ALABAMA 35202 BIRMINGHAM, ALABAMA 35207

4'-6" Diameter Ductile Iron Pipe - Fastite Joint, Mechanical Joint, Flanged Joint
 Flex-Ring Restrained Joint, Lok-Ring Restrained Joint, Flex-Lok Restrained Joint
 ANSI A21.10, A21.53, & AMERICAN Standard Fittings
 Cement Lining, POLYBOND Lining, plus Special Coatings & Linings
 American Flow Control - Valves And Hydrants

This drawing is a service to the customer as an aid in developing a detailed bill of material. The purchaser must verify correctness of design and dimensions. It is the responsibility of the purchaser to verify all details on receipt of prints. Changes desired shall be noted on a print and returned to American. Drawings will be revised per these changes. Drawings returned to American without signature or initial will be considered to have been reviewed by the customer with any required change noted.

REVISED BY:	DATE:	REV #

CONDAIRE, INCORPORATED

WATER TREATMENT FACILITIES
 O'FALLON, MO
 SECTIONS A, B & C
 REF. DWG. Y10 & B7