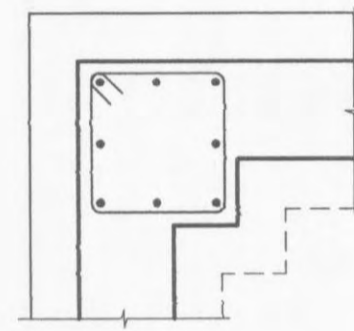
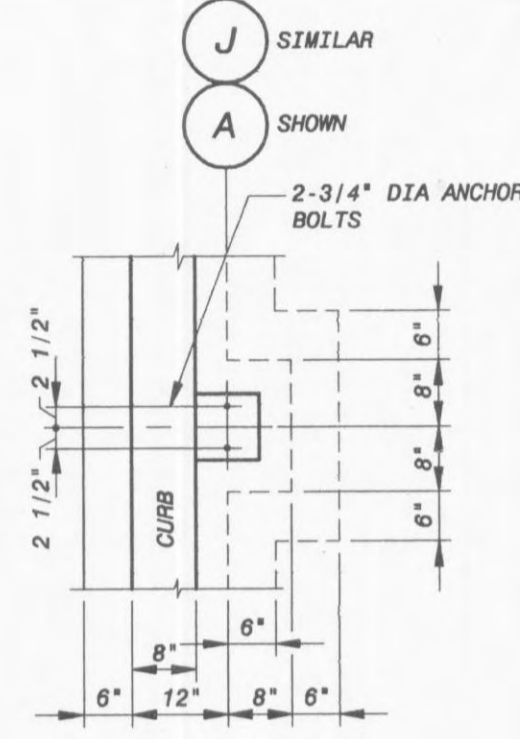


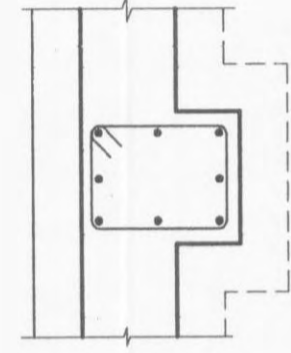
PILASTER DETAIL A
1/2" = 1'-0" (TYP 3 PLCS) D1, D2



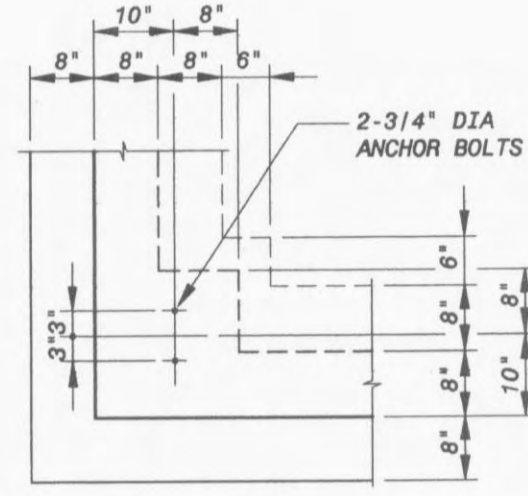
PILASTER REINFORCING:
8-#5 J W/ #4 E @ 12"
FOOTING REINFORCING:
4-#5 BOTTOM EW



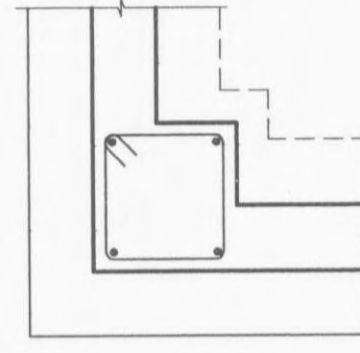
PILASTER DETAIL B
1/2" = 1'-0" (TYP 8 PLCS) D1, D2



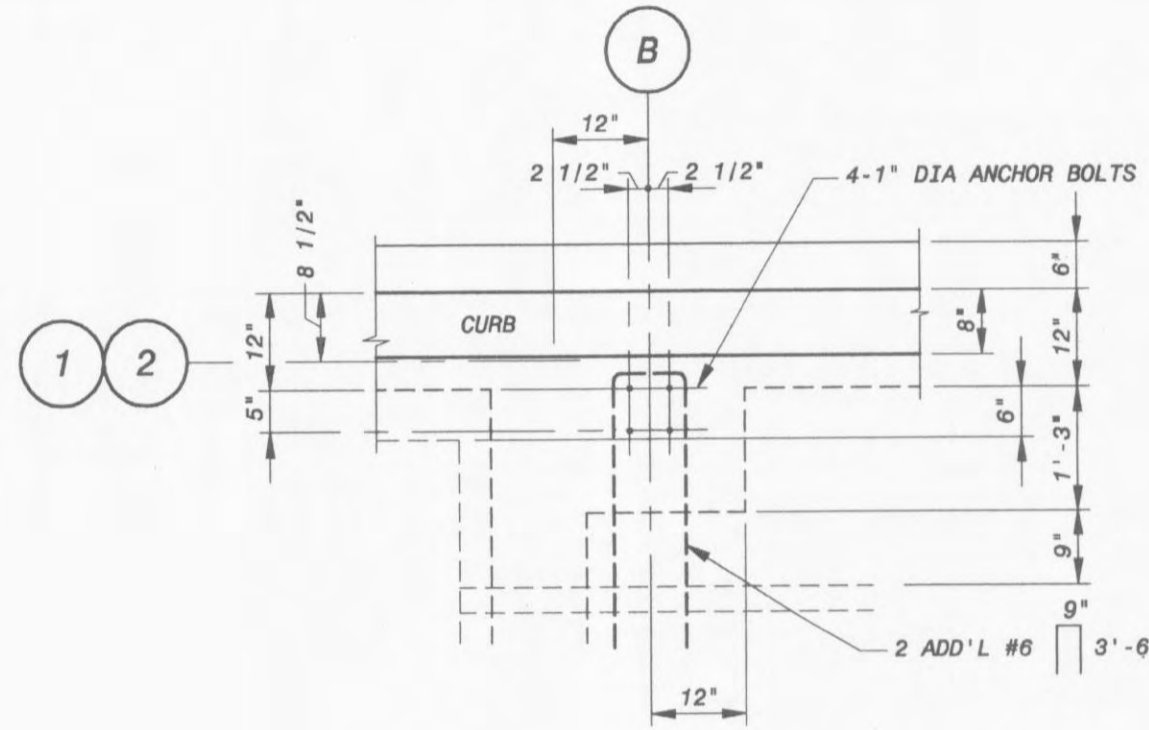
PILASTER REINFORCING:
8-#5 J W/ #4 E @ 12"
FOOTING REINFORCING:
4-#5 BOTTOM EW



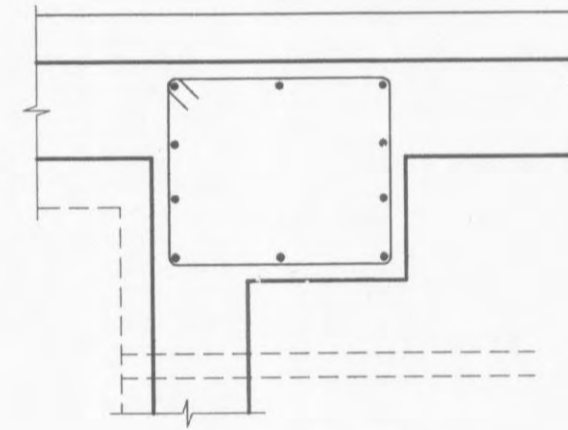
PILASTER DETAIL C
1/2" = 1'-0" (TYP 2 PLCS) D1, D2



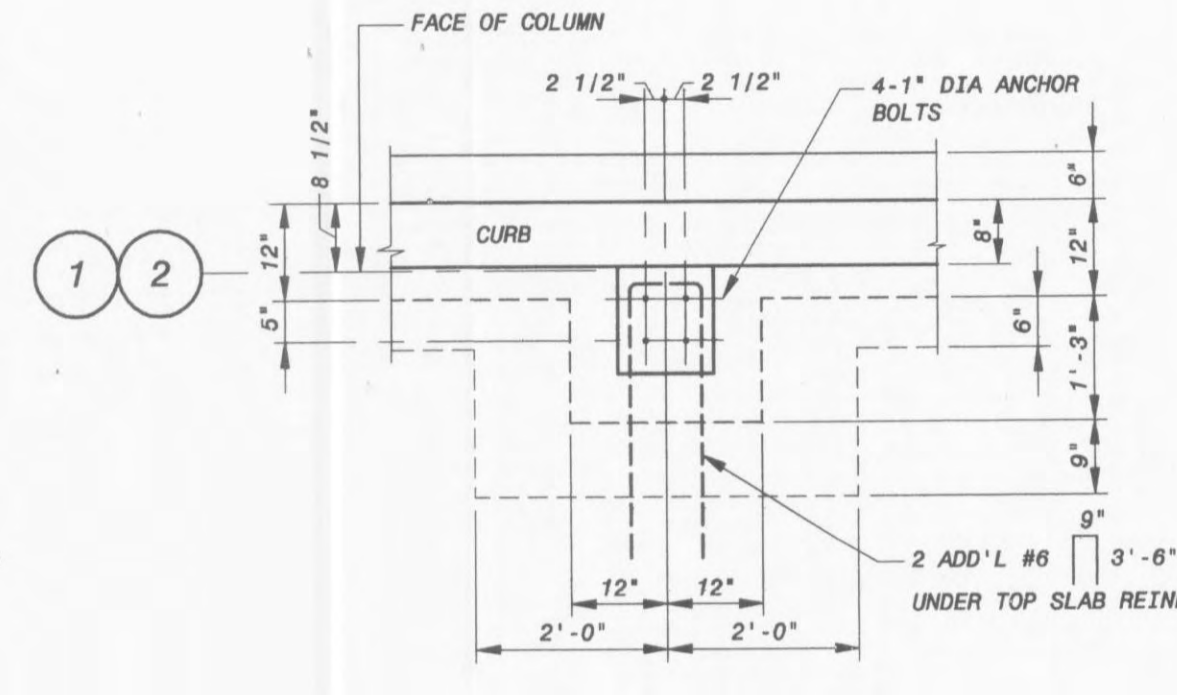
PILASTER REINFORCING:
4-#5 J W/ #4 E @ 12"
FOOTING REINFORCING:
3-#5 BOTTOM EW



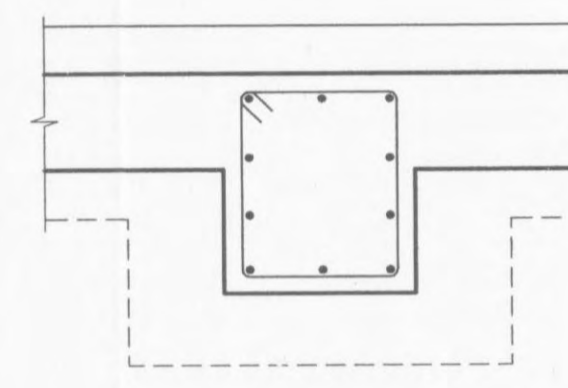
PILASTER DETAIL D
1/2" = 1'-0" (TYP 1 PLCS) D1, D2



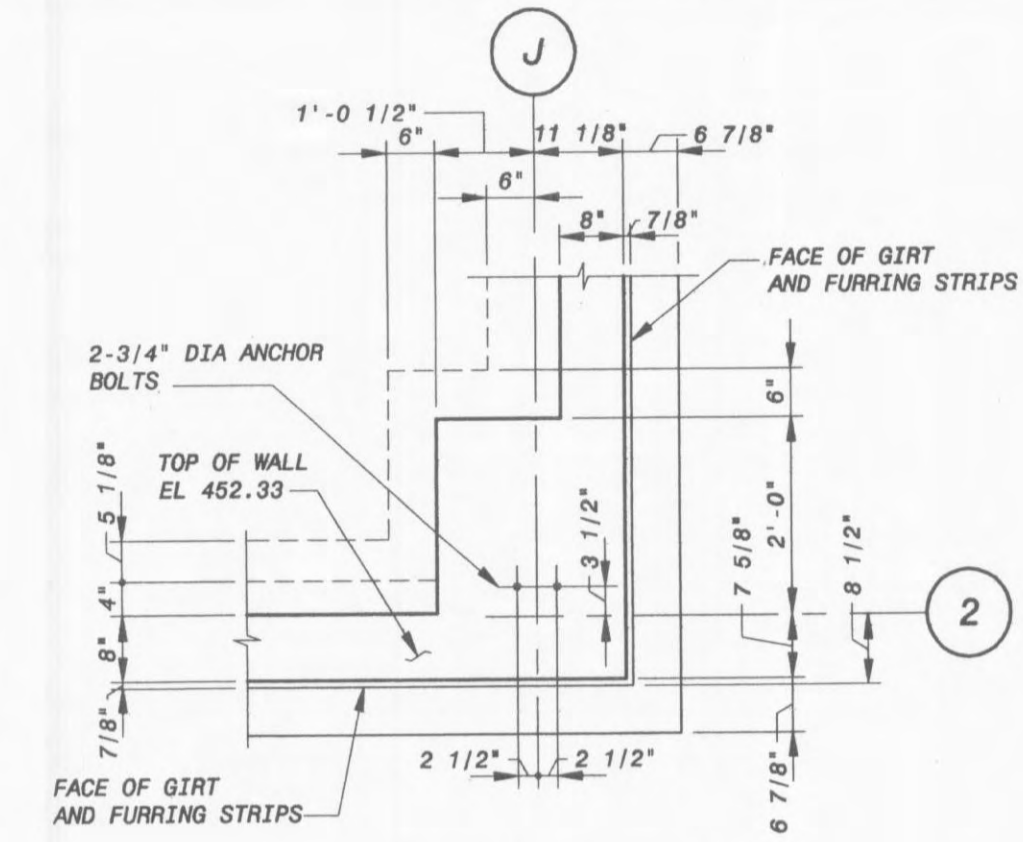
PILASTER REINFORCING:
10-#5 J W/ #4 E @ 12"
FOOTING REINFORCING:
SEE SECT 11D7



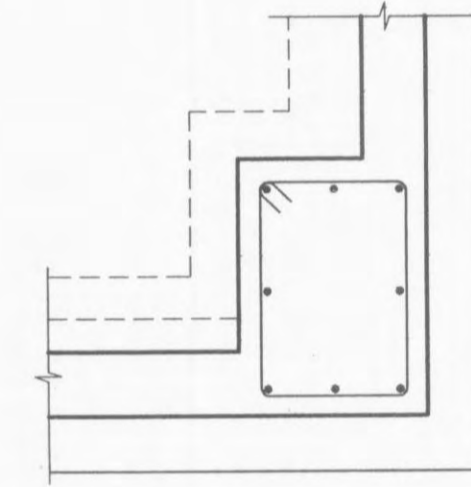
PILASTER DETAIL E
1/2" = 1'-0" (TYP 15 PLCS) D1, D2



PILASTER REINFORCING:
10-#5 J W/ #4 E @ 12"
FOOTING REINFORCING:
5-#5 BOTTOM EW



PILASTER DETAIL F
1/2" = 1'-0" (TYP 1 PLCS) D1, D2



PILASTER REINFORCING:
8-#5 J W/ #4 E @ 12"
FOOTING REINFORCING:
4-#5 BOTTOM EW

NO.	BY	CHK	APP
1			
2			

CONFORMED TO CONSTRUCTION RECORDS
ADDENDUM
REVISIONS AND RECORD OF ISSUE

DATE: 10/08/01
DESIGNED BY: WFR
CHECKED BY: WLK
APPROVED BY: WFR
DATE: 10/08/01

CITY OF O'FALLON, MISSOURI
WATER TREATMENT PLANT

DESIGNED: WFR
DETAILED: MAS
CHECKED: WLK
APPROVED: WFR
DATE: 10/08/01
PROJECT NO.
97515
D9
SHEET
28 OF 96

SECTION & DETAILS



THIS DRAWING WAS
ORIGINALLY APPROVED BY
FOR CONSTRUCTION BY
WILLIAM F. RILEY ON
10/08/01 AND SEALED
BY WILLIAM F. RILEY
A LICENSED PROFESSIONAL
ENGINEER IN THE
STATE OF MISSOURI,
NO. E-20766