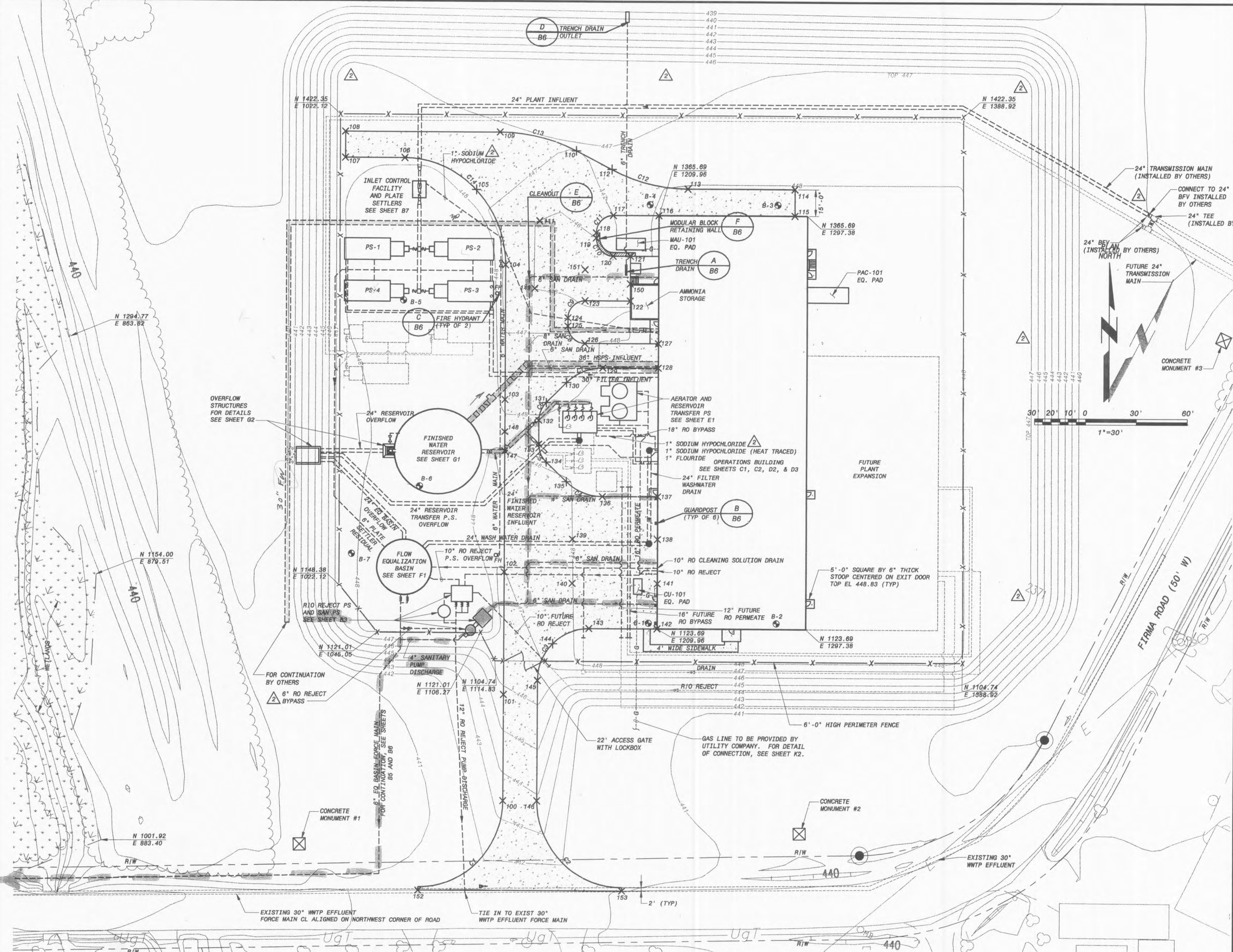
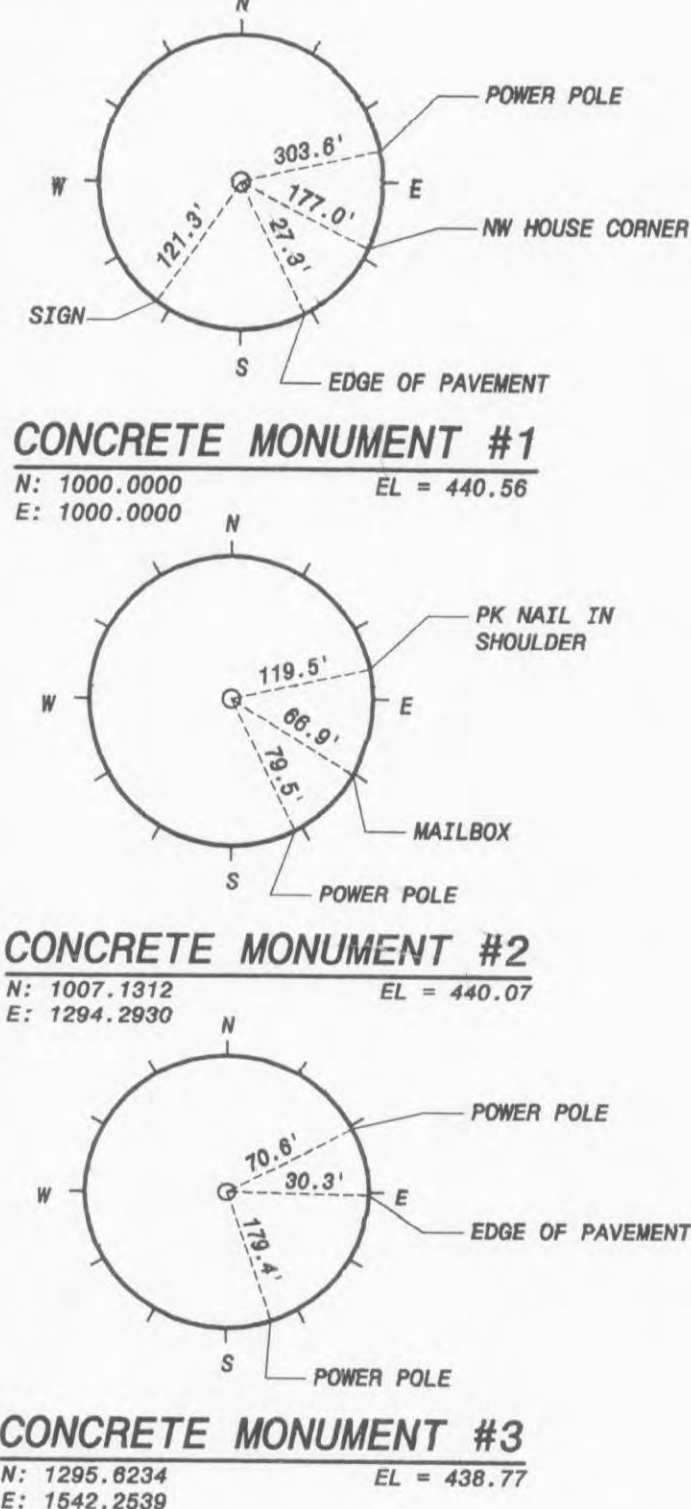


**COORDINATE TABLE**

PT	NORTHING	EASTING	ELEV
100	1025.75	1119.96	443.38
101	1085.70	1119.96	445.76
102	1186.19	1119.96	447.00
103	1269.05	1119.96	447.80
104	1337.35	1119.96	446.50
105	1379.78	1102.39	447.26
106	1397.35	1059.98	447.60
107	1397.35	1025.16	447.86
108	1412.35	1025.16	447.90
109	1412.35	1116.47	447.50
110	1401.76	1161.28	446.80
111	1362.35	1139.98	446.00
112	1391.31	1182.26	447.49
113	1380.69	1226.97	448.30
114	1380.69	1289.96	448.30
115	1365.69	1289.96	448.50
116	1365.69	1209.96	448.50
117	1365.69	1163.18	447.00
118	1355.69	1173.18	446.12
119	1352.69	1173.18	446.00
120	1342.69	1183.18	445.10
121	1342.69	1193.30	445.08
122	1316.85	1193.30	445.25
123	1316.85	1166.75	445.70
124	1316.85	1156.75	446.40
125	1302.02	1156.75	446.83
126	1282.02	1166.75	447.79
127	1282.02	1209.96	448.92
128	1278.02	1209.96	448.92
129	1278.02	1177.36	448.16
130	1269.22	1166.12	447.94
131	1257.41	1144.35	447.94
132	1246.84	1139.96	448.25
133	1232.07	1139.96	448.13
134	1221.45	1144.35	448.10
135	1209.84	1156.13	447.94
136	1200.84	1177.36	448.33
137	1200.84	1209.96	448.92
138	1175.69	1209.96	448.92
139	1175.69	1159.96	448.00
140	1149.69	1159.96	448.00
141	1149.69	1209.96	448.92
142	1123.69	1209.96	448.92
143	1123.69	1169.96	448.20
144	1114.90	1148.75	447.42
145	1093.69	1139.96	446.64
146	1025.77	1139.96	443.76
147	1228.12	1119.96	448.00
148	1239.65	1119.96	448.12
149	1323.87	1137.24	446.00
150	1326.85	1193.30	445.08
151	1334.77	1166.75	445.25
152	973.7z	1069.9z	MATCH EXISTING
153	973.7z	1169.9z	MATCH EXISTING

**CURVE TABLE**

CURVE	LENGTH	RADIUS
C1	78.5	60.00
C2	78.5	60.00
C3	47.1	30.00
C4	23.6	30.00
C5	11.8	15.00
C6	11.8	15.00
C7	23.6	30.00
C8	15.7	10.00
C9	15.7	10.00
C10	15.7	10.00
C11	15.7	10.00
C12	46.5	100.00
C13	46.5	100.00
C14	94.3	60.00



- NOTES:**
- EXISTING FACILITIES, STRUCTURES, AND UTILITIES HAVE BEEN PLOTTED FROM AVAILABLE SURVEYS AND RECORDS AND THEIR LOCATIONS MUST BE CONSIDERED APPROXIMATE ONLY. THERE MAY BE OTHERS, THE EXISTENCE OF WHICH IS PRESENTLY NOT KNOWN. CONTRACTOR SHALL VERIFY THE EXACT LOCATION OF THESE OR ANY OTHER FEATURES WITHIN THE PROJECT LIMITS.
  - EXISTING CONTOURS SHOWN SCREENED ON THE PLANS.
  - COORDINATE SYSTEM IS BASED FROM THREE CONCRETE MONUMENTS SET AT THE SITE.
  - NO CONSTRUCTION ACTIVITIES SHALL BE PERMITTED IN THE WETLAND AREAS DESIGNATED ON THE PLANS.
  - EROSION CONTROL MEASURES SHALL BE INSTALLED AT THE SITE IN CONFORMANCE WITH THE SPECIFICATIONS.
  - REFER TO SHEET B2 FOR PIPING LOCATIONS.
  - REFER TO SHEET B6 FOR PAVEMENT JOINTING PLAN.

**LEGEND:**

	EXISTING CONTOUR		B-6 BORING		CL CENTER LINE		HSPS HIGH SERVICE PUMP STATION		R/W RIGHT-OF-WAY
	NEW CONTOUR		+112 STAKING POINT		E ELECTRIC LINE		MB MAILBOX		SAN SANITARY
	FUTURE FACILITIES		EQ EQUALIZATION		EL ELEVATION		PP POWER POLE		TYP TYPICAL
	EXISTING FACILITIES		P/L PROPERTY LINE		UGT UNDERGROUND TELEPHONE				
	WETLAND BOUNDARIES								

**CITY OF FALLON, MISSOURI**  
**WATER TREATMENT PLANT**  
**SITE PLAN**

DESIGNED: KMN, BPF  
 DETAILED: JAB, DPH  
 CHECKED: WLK  
 APPROVED: KMN  
 DATE: 10/08/01  
 PROJECT NO. 97515  
**B1**  
 SHEET 4 OF 96

CONFORMED TO CONSTRUCTION RECORDS  
 ADDENDUM 2  
 DATE 10/08/01  
 REVISIONS AND RECORD OF ISSUE  
 NO. BY CK APP  
 1 97515-300-C-100001RW  
 2 97515-300-C-100001RW  
 3 97515-300-C-100001RW  
 4 97515-300-C-100001RW  
 5 97515-300-C-100001RW  
 6 97515-300-C-100001RW  
 7 97515-300-C-100001RW  
 8 97515-300-C-100001RW  
 9 97515-300-C-100001RW  
 10 97515-300-C-100001RW  
 11 97515-300-C-100001RW  
 12 97515-300-C-100001RW  
 13 97515-300-C-100001RW  
 14 97515-300-C-100001RW  
 15 97515-300-C-100001RW  
 16 97515-300-C-100001RW  
 17 97515-300-C-100001RW  
 18 97515-300-C-100001RW  
 19 97515-300-C-100001RW  
 20 97515-300-C-100001RW  
 21 97515-300-C-100001RW  
 22 97515-300-C-100001RW  
 23 97515-300-C-100001RW  
 24 97515-300-C-100001RW  
 25 97515-300-C-100001RW  
 26 97515-300-C-100001RW  
 27 97515-300-C-100001RW  
 28 97515-300-C-100001RW  
 29 97515-300-C-100001RW  
 30 97515-300-C-100001RW  
 31 97515-300-C-100001RW  
 32 97515-300-C-100001RW  
 33 97515-300-C-100001RW  
 34 97515-300-C-100001RW  
 35 97515-300-C-100001RW  
 36 97515-300-C-100001RW  
 37 97515-300-C-100001RW  
 38 97515-300-C-100001RW  
 39 97515-300-C-100001RW  
 40 97515-300-C-100001RW  
 41 97515-300-C-100001RW  
 42 97515-300-C-100001RW  
 43 97515-300-C-100001RW  
 44 97515-300-C-100001RW  
 45 97515-300-C-100001RW  
 46 97515-300-C-100001RW  
 47 97515-300-C-100001RW  
 48 97515-300-C-100001RW  
 49 97515-300-C-100001RW  
 50 97515-300-C-100001RW  
 51 97515-300-C-100001RW  
 52 97515-300-C-100001RW  
 53 97515-300-C-100001RW  
 54 97515-300-C-100001RW  
 55 97515-300-C-100001RW  
 56 97515-300-C-100001RW  
 57 97515-300-C-100001RW  
 58 97515-300-C-100001RW  
 59 97515-300-C-100001RW  
 60 97515-300-C-100001RW  
 61 97515-300-C-100001RW  
 62 97515-300-C-100001RW  
 63 97515-300-C-100001RW  
 64 97515-300-C-100001RW  
 65 97515-300-C-100001RW  
 66 97515-300-C-100001RW  
 67 97515-300-C-100001RW  
 68 97515-300-C-100001RW  
 69 97515-300-C-100001RW  
 70 97515-300-C-100001RW  
 71 97515-300-C-100001RW  
 72 97515-300-C-100001RW  
 73 97515-300-C-100001RW  
 74 97515-300-C-100001RW  
 75 97515-300-C-100001RW  
 76 97515-300-C-100001RW  
 77 97515-300-C-100001RW  
 78 97515-300-C-100001RW  
 79 97515-300-C-100001RW  
 80 97515-300-C-100001RW  
 81 97515-300-C-100001RW  
 82 97515-300-C-100001RW  
 83 97515-300-C-100001RW  
 84 97515-300-C-100001RW  
 85 97515-300-C-100001RW  
 86 97515-300-C-100001RW  
 87 97515-300-C-100001RW  
 88 97515-300-C-100001RW  
 89 97515-300-C-100001RW  
 90 97515-300-C-100001RW  
 91 97515-300-C-100001RW  
 92 97515-300-C-100001RW  
 93 97515-300-C-100001RW  
 94 97515-300-C-100001RW  
 95 97515-300-C-100001RW  
 96 97515-300-C-100001RW  
 97 97515-300-C-100001RW  
 98 97515-300-C-100001RW  
 99 97515-300-C-100001RW  
 100 97515-300-C-100001RW