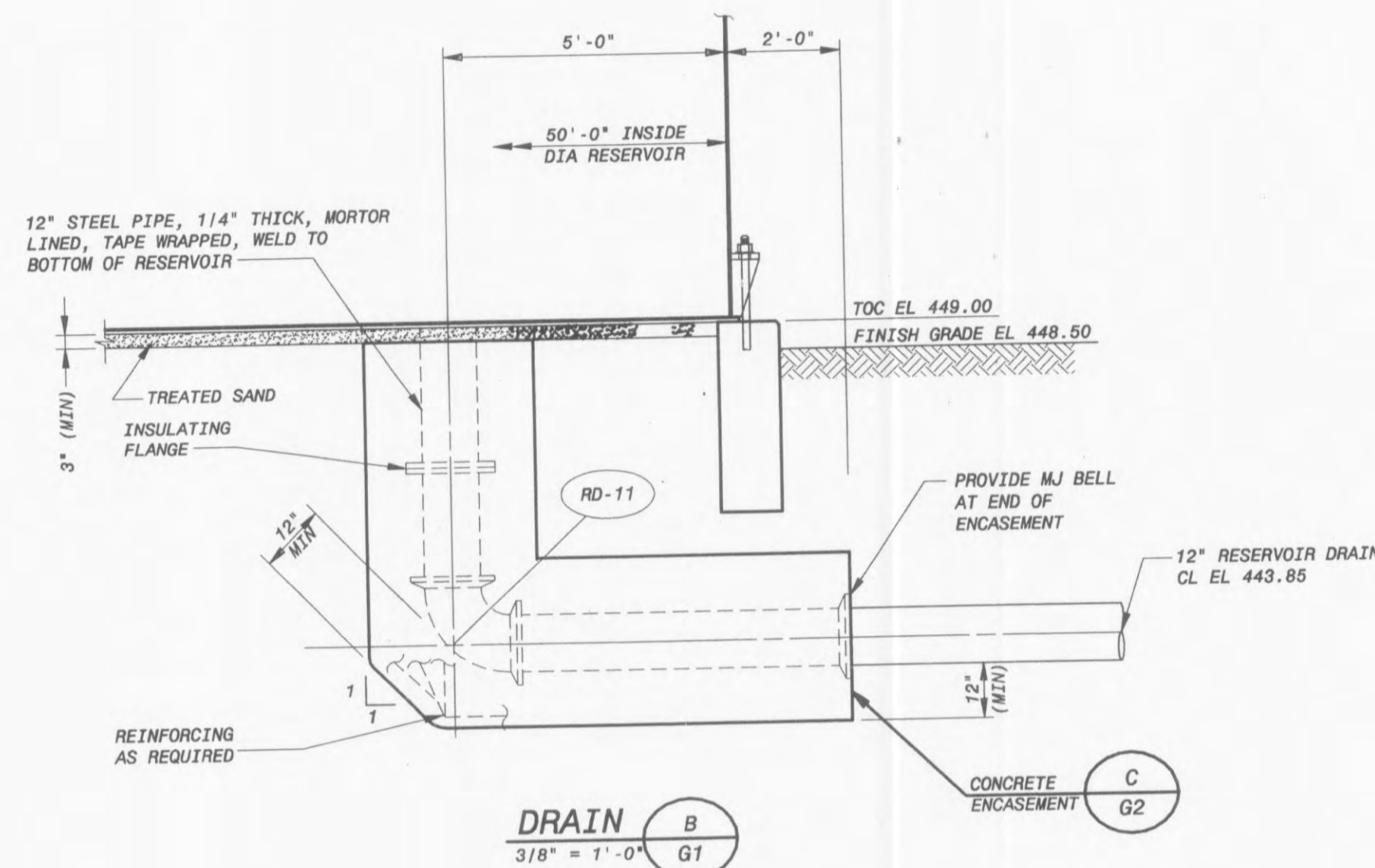
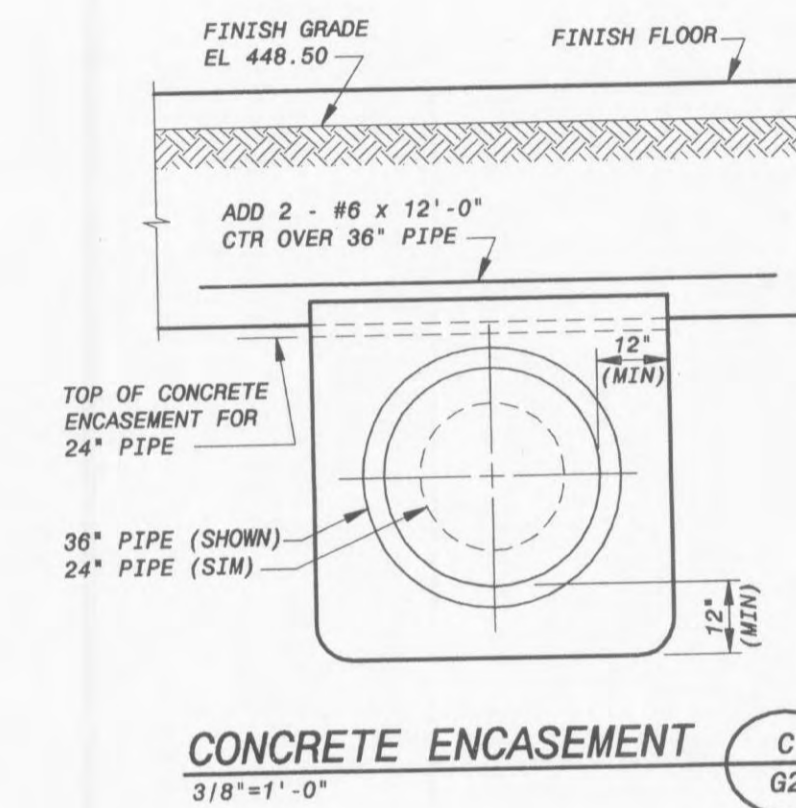


NOTE:  
THIS SECTION IS FOR BOTH INLET  
AND OUTLET STRUCTURES.

**INLET AND OUTLET**  
3/8" = 1'-0"  
A  
G1



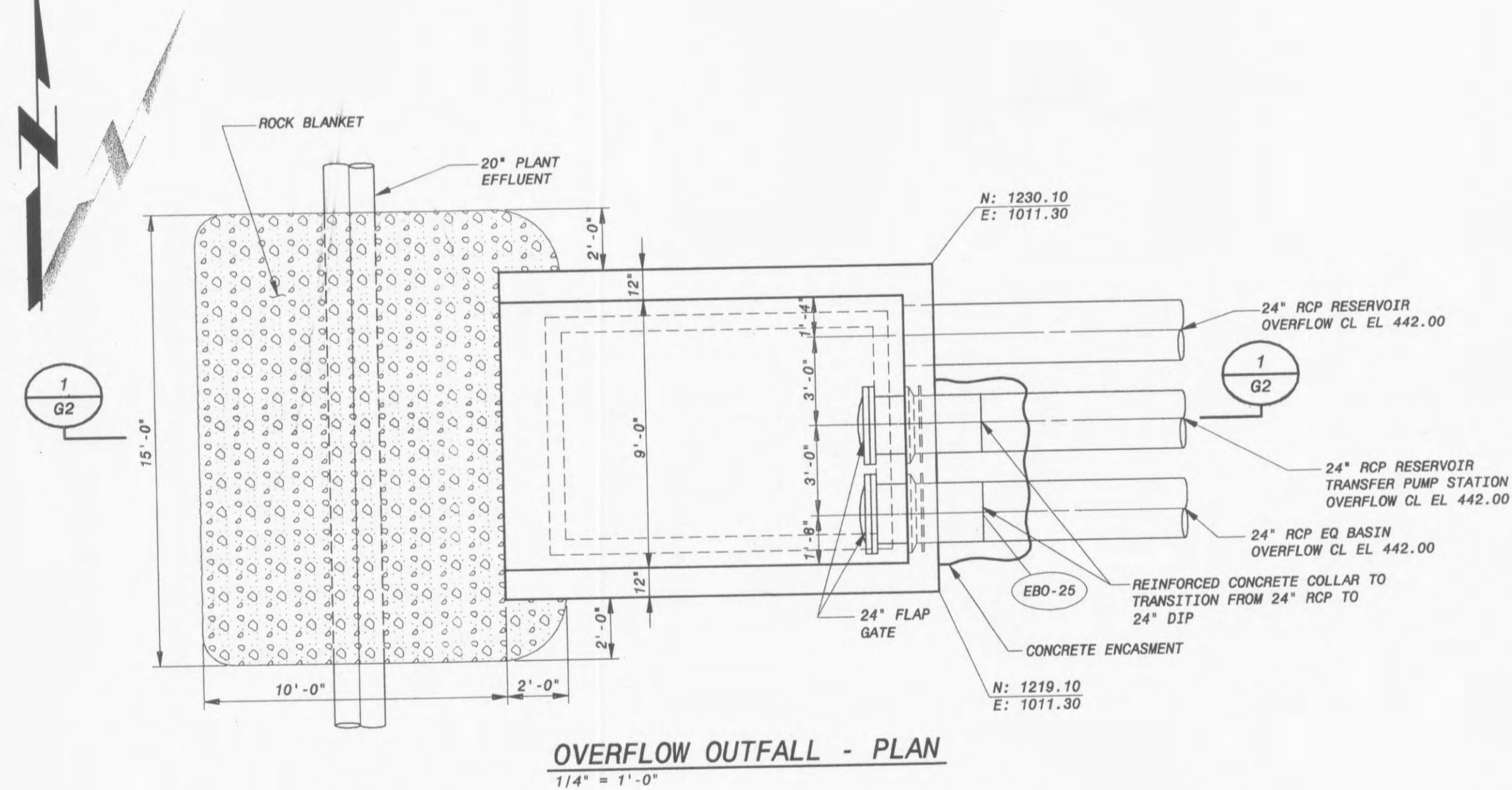
**DRAIN**  
3/8" = 1'-0"  
B  
G1



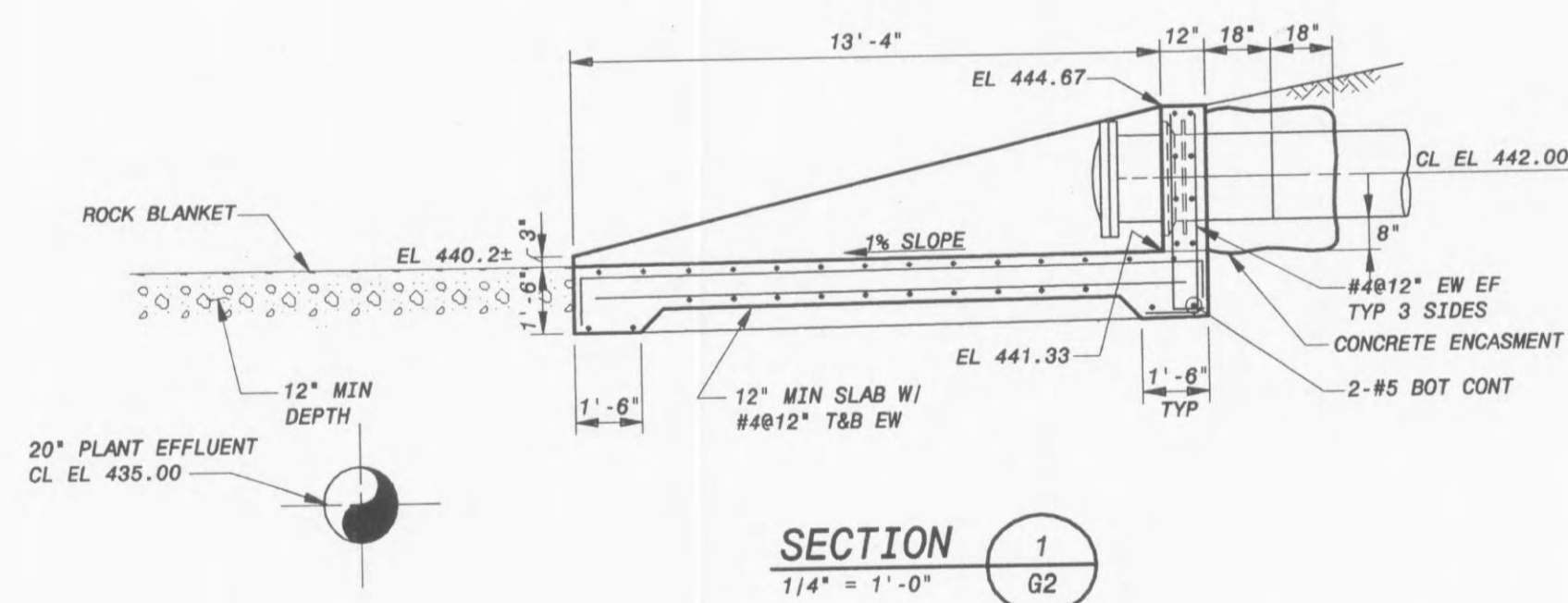
**CONCRETE ENCASMENT**  
3/8" = 1'-0"  
C  
G2

\*THIS DRAWING WAS  
ORIGINALLY APPROVED  
FOR CONSTRUCTION BY  
WILLIAM F. RILEY, P.E.  
BY WILLIAM F. RILEY  
A LICENSED PROFESSIONAL  
ENGINEER IN THE  
STATE OF MISSOURI,  
NO. E. 26599\*

PLAN  
NORTH



**OVERFLOW OUTFALL - PLAN**  
1/4" = 1'-0"



**SECTION**  
1/4" = 1'-0"  
1  
G2

CITY OF O'FALLON, MISSOURI  
WATER TREATMENT PLANT

TREATED WATER RESERVOIR  
SECTIONS AND DETAILS

DESIGNED: KMN, BPF, WFR  
DETAILED: CSA, JAB, MAS  
CHECKED: WLK, BLP  
APPROVED: KMN, WFR  
DATE: 10/08/01

PROJECT NO.

97515

G2

SHEET  
34 OF 96

CONFORMED TO CONSTRUCTION RECORDS	NO.	BY	CHK	APP
ADDENDUM	1			
DATE	REVISIONS AND RECORD OF ISSUE			
	XREF1 ID:			
	XREF2 ID:			
	XREF3 ID:			
	XREF4 ID:			
	XREF5 ID:			
	USER: BOW/4813			
	SW: ACAD-2001			

\*THIS DRAWING WAS  
ORIGINALLY APPROVED  
FOR CONSTRUCTION BY  
WILLIAM F. RILEY, P.E.  
BY WILLIAM F. RILEY  
A LICENSED PROFESSIONAL  
ENGINEER IN THE  
STATE OF MISSOURI,  
NO. E. 26599\*

**BLACK & VEATCH**  
Corporation  
St. Louis, Missouri