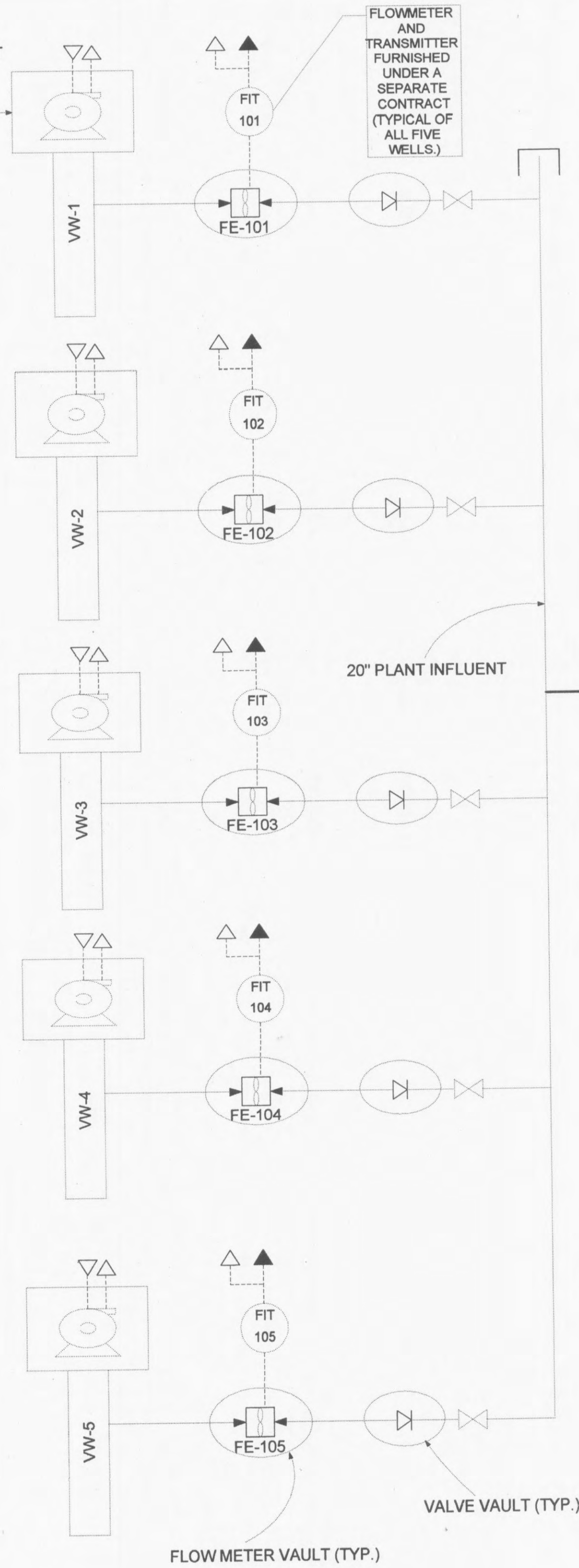


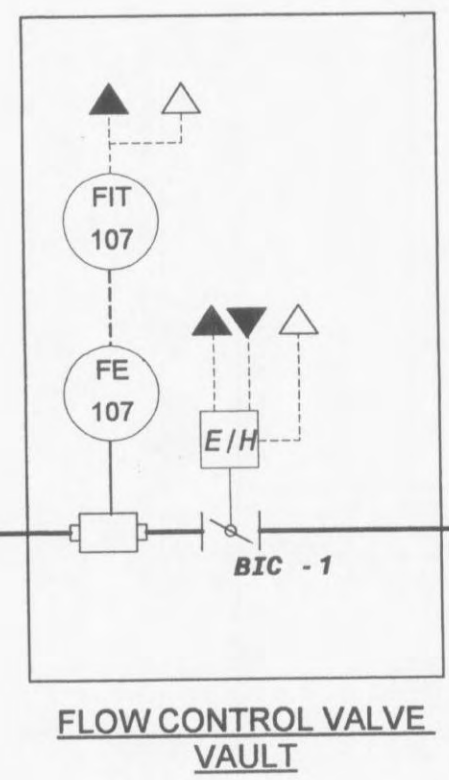
VERTICAL WELL AND PUMP  
FURNISHED UNDER A SEPARATE CONTRACT  
(TYPICAL OF 5)

FLOWMETER  
AND  
TRANSMITTER  
FURNISHED  
UNDER A  
SEPARATE  
CONTRACT  
(TYPICAL OF  
ALL FIVE  
WELLS.)



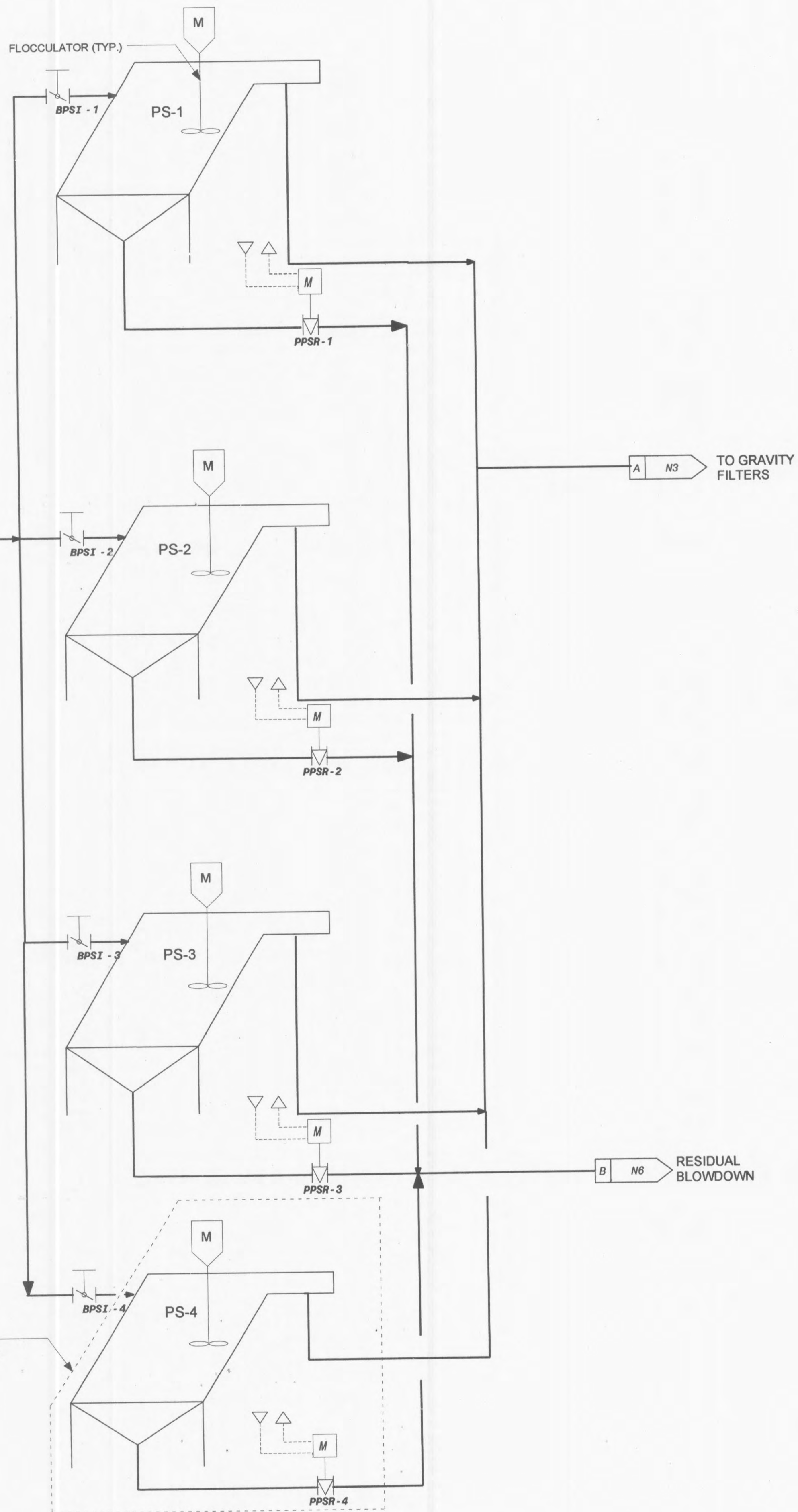
**WELL PUMPS**

SODIUM  
HYPOCHLORITE



**FLOW CONTROL VALVE  
VAULT**

FLOCCULATOR (TYP.)



**PLATE SETTLERS**

BID ALTERNATE ITEMS  
(SEE SPECIFICATIONS)

NO.	BY	DATE	REVISIONS AND RECORD OF ISSUE
1	CK		
2	APP		

\*THIS DRAWING WAS  
ORIGINALLY APPROVED BY  
FOR CONSTRUCTION BY  
JOHN E. ROUSH, JR. ON  
10-08-2001 AND SEALED  
BY A LICENSED PROFESSIONAL  
ENGINEER IN THE  
STATE OF MISSOURI,  
NO. E-28417.



**CITY OF O'FALLON, MISSOURI**  
**WATER TREATMENT PLANT**  
**WELL FIELD AND PLANT INFLUENT  
P & ID**

DESIGNED: KBV/JER  
DETAILED: KBV/JER  
CHECKED: MJP  
APPROVED: JER  
DATE: 10/08/01

PROJECT NO.  
**97515**

**N2**

SHEET  
75 OF 96