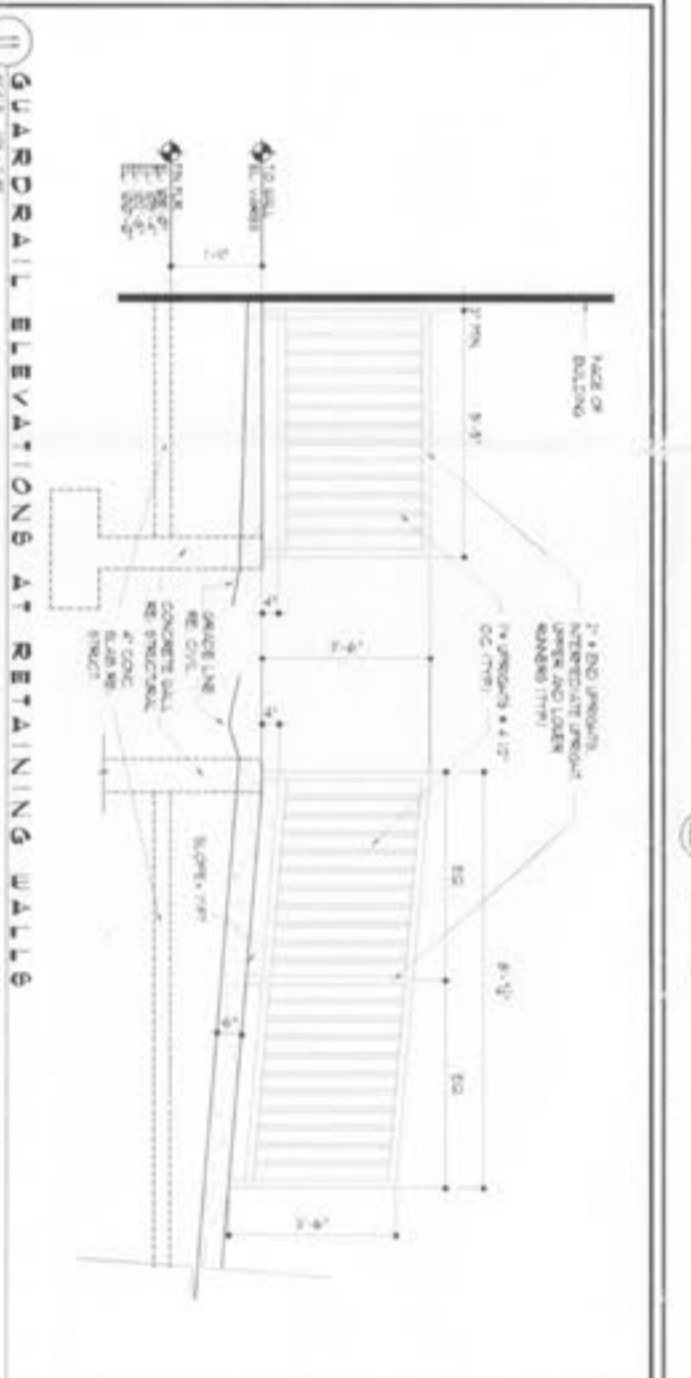
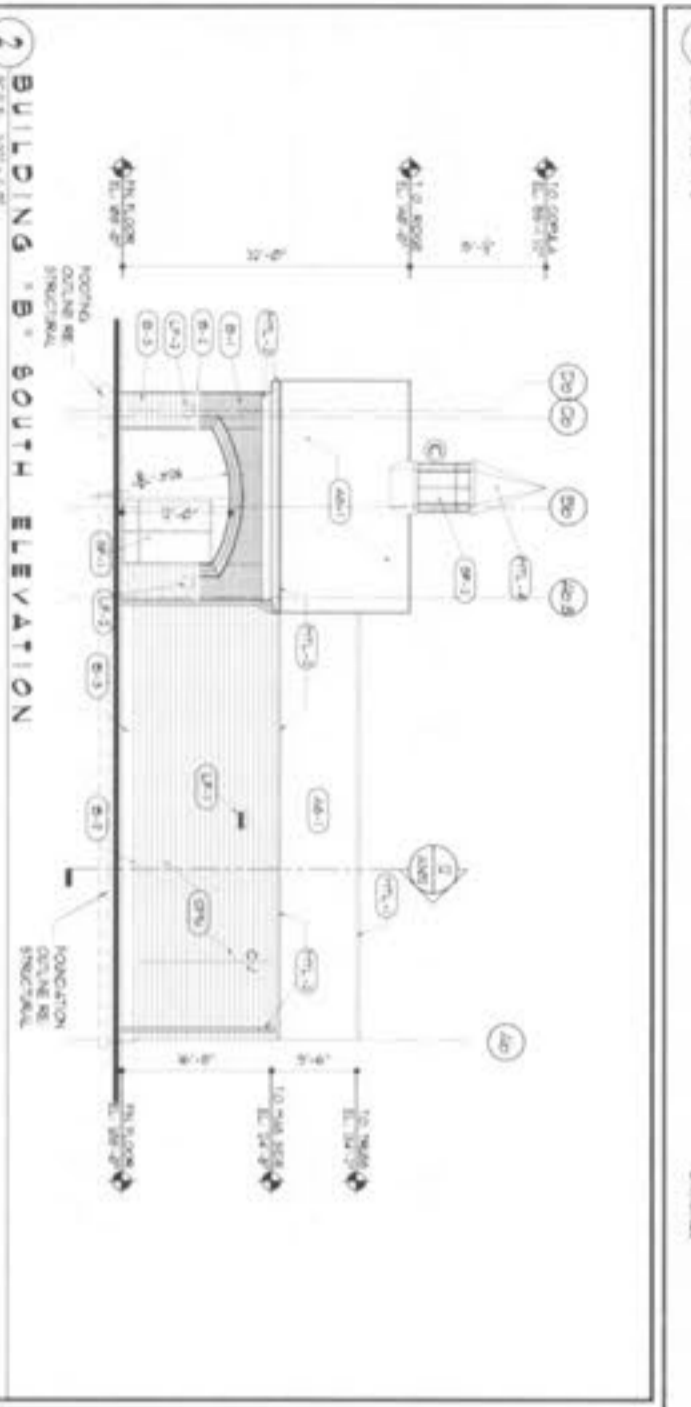
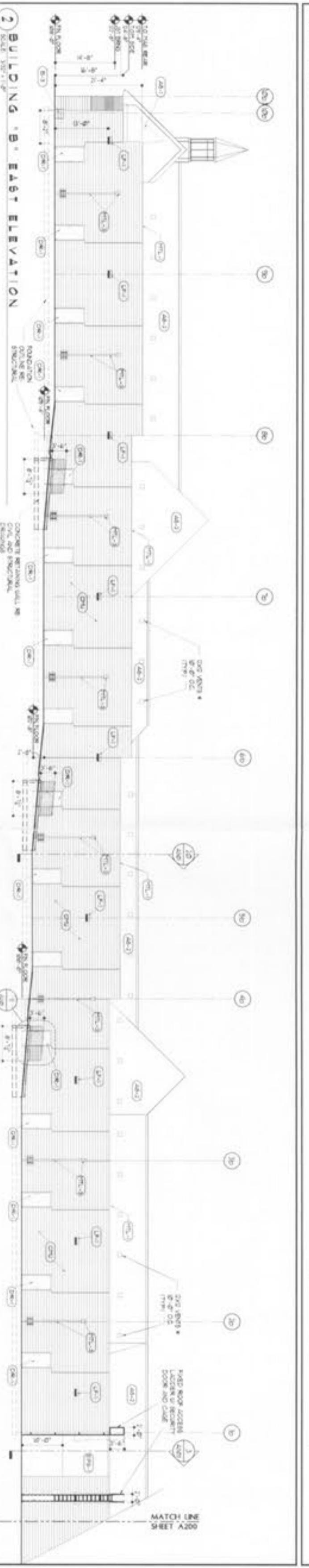
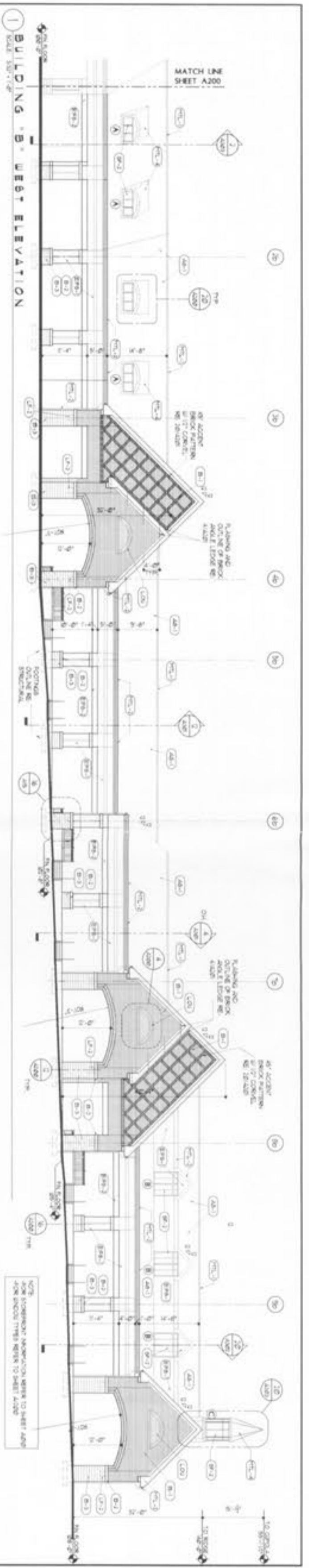


EXTERIOR MATERIALS LIST

NO.	DESCRIPTION
1	BRICK, COMMON, 8" X 8" X 16"
2	BRICK, GLAZED, 8" X 8" X 16"
3	BRICK, FACE, 8" X 8" X 16"
4	BRICK, BOND, 8" X 8" X 16"
5	BRICK, GUTTER, 8" X 8" X 16"
6	BRICK, CHIMNEY, 8" X 8" X 16"
7	BRICK, ARCH, 8" X 8" X 16"
8	BRICK, CORNER, 8" X 8" X 16"
9	BRICK, DORMER, 8" X 8" X 16"
10	BRICK, GABLE, 8" X 8" X 16"

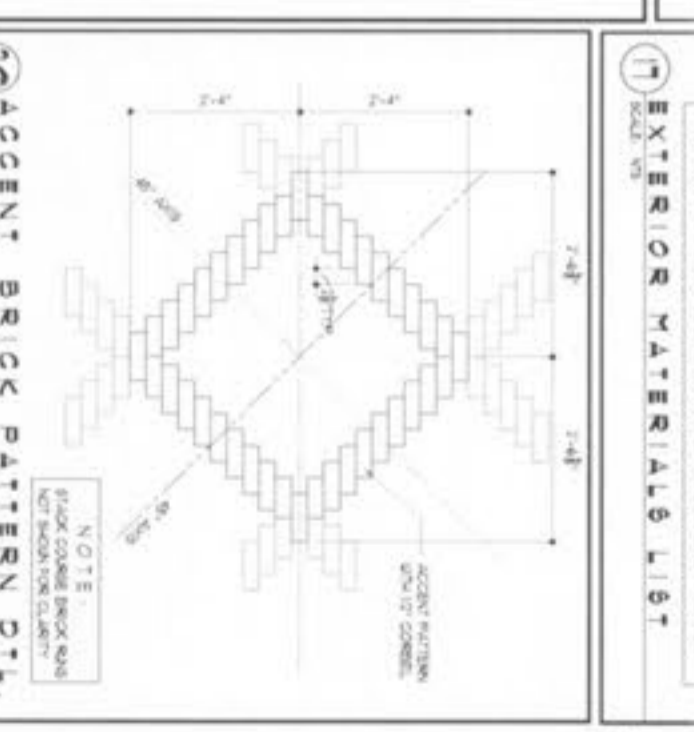
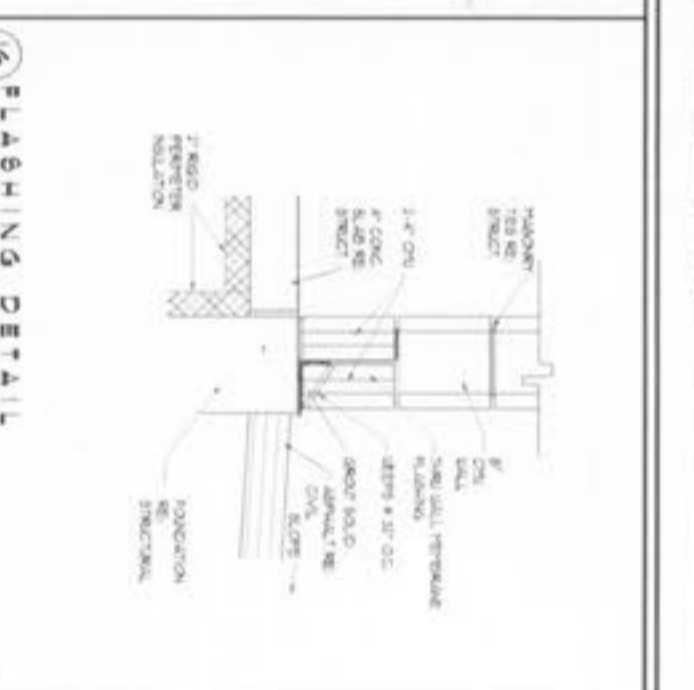
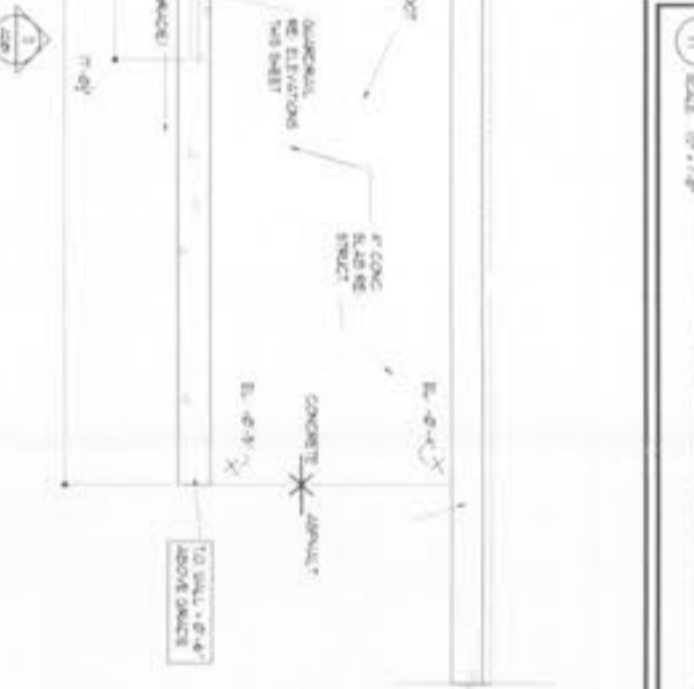
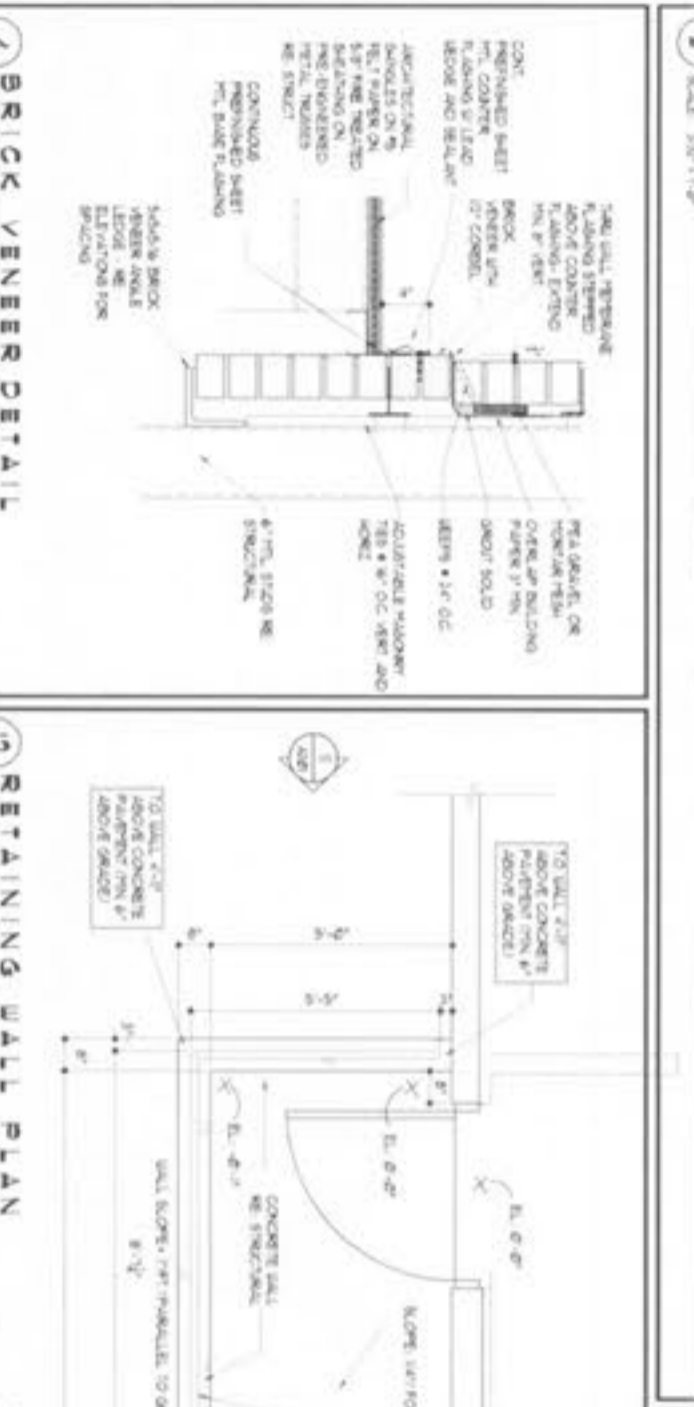
TRU ARCHITECTS

DATE: 11.14.19
 SHEET NO: 15 OF 19
 REVISION: 15.04.19
 CDR: [Signature]
 19179
 A200
 Making Mr. Revision



EXTERIOR MATERIALS LIST

NO.	DESCRIPTION
1	BRICK, COMMON, 8" X 8" X 16"
2	BRICK, GLAZED, 8" X 8" X 16"
3	BRICK, FACE, 8" X 8" X 16"
4	BRICK, BOND, 8" X 8" X 16"
5	BRICK, GUTTER, 8" X 8" X 16"
6	BRICK, CHIMNEY, 8" X 8" X 16"
7	BRICK, ARCH, 8" X 8" X 16"
8	BRICK, CORNER, 8" X 8" X 16"
9	BRICK, DORMER, 8" X 8" X 16"
10	BRICK, GABLE, 8" X 8" X 16"



TRU ARCHITECTS

DATE: 11.14.19
 SHEET NO: 16 OF 19
 REVISION: 15.04.19
 CDR: [Signature]
 19179
 A201
 Making Mr. Revision

WATERBURY VILLAGE-PHASE I
 NEC. HWY. K. AND WATERBURY FALLS DRIVE
 O'FALLON, MISSOURI

TAYLOR MURPHY, INC. DEVELOPER
 THOMAS ROOP, INC. ARCHITECTS ARCHITECT
 BRW/M ENGINEERS CORP. STRUCTURAL ENGINEER
 BAE ENGINEERING CO., INC. CIVIL ENGINEER

WATERBURY VILLAGE-PHASE I
 NEC. HWY. K. AND WATERBURY FALLS DRIVE
 O'FALLON, MISSOURI

TAYLOR MURPHY, INC. DEVELOPER
 THOMAS ROOP, INC. ARCHITECTS ARCHITECT
 BRW/M ENGINEERS CORP. STRUCTURAL ENGINEER
 BAE ENGINEERING CO., INC. CIVIL ENGINEER

File 9950.07