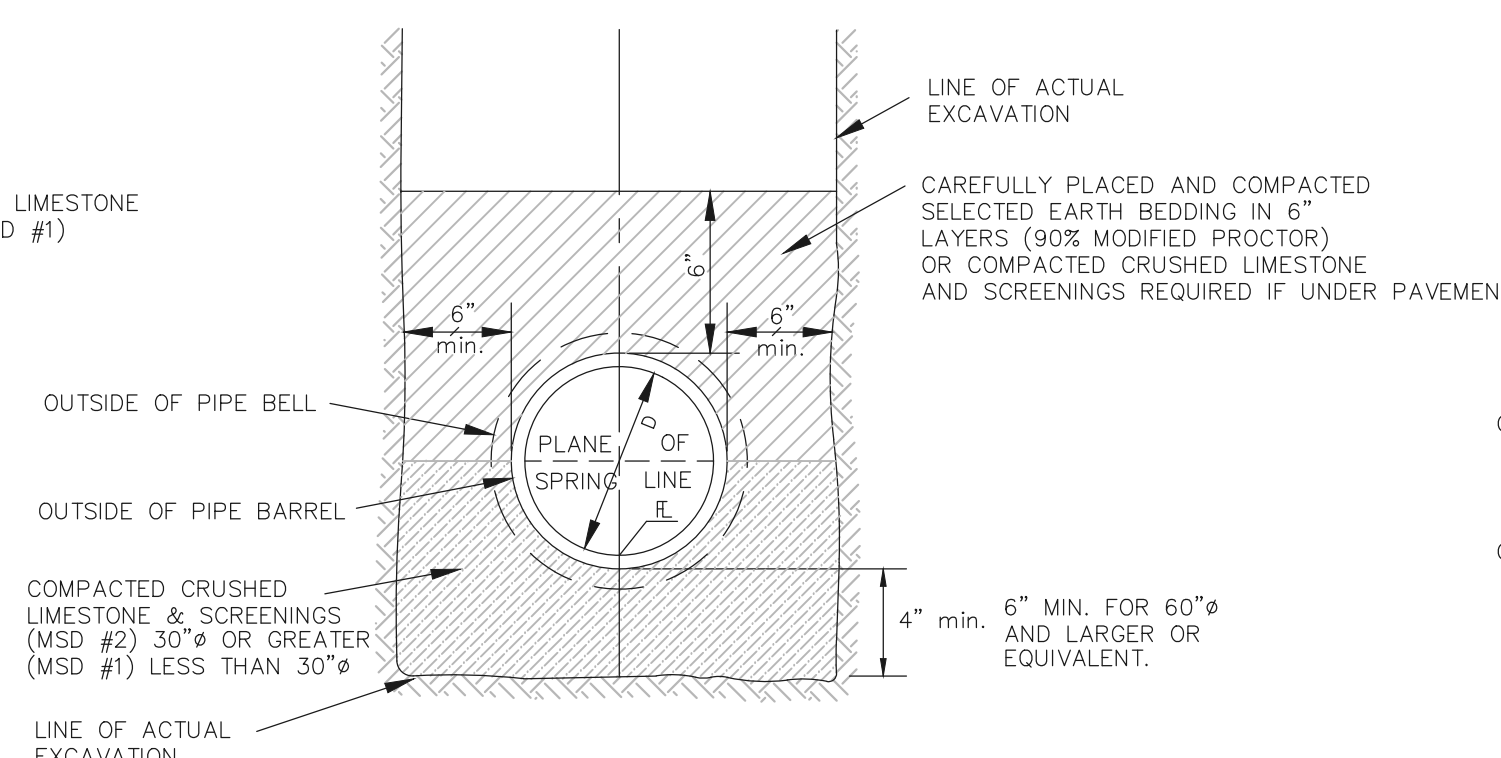
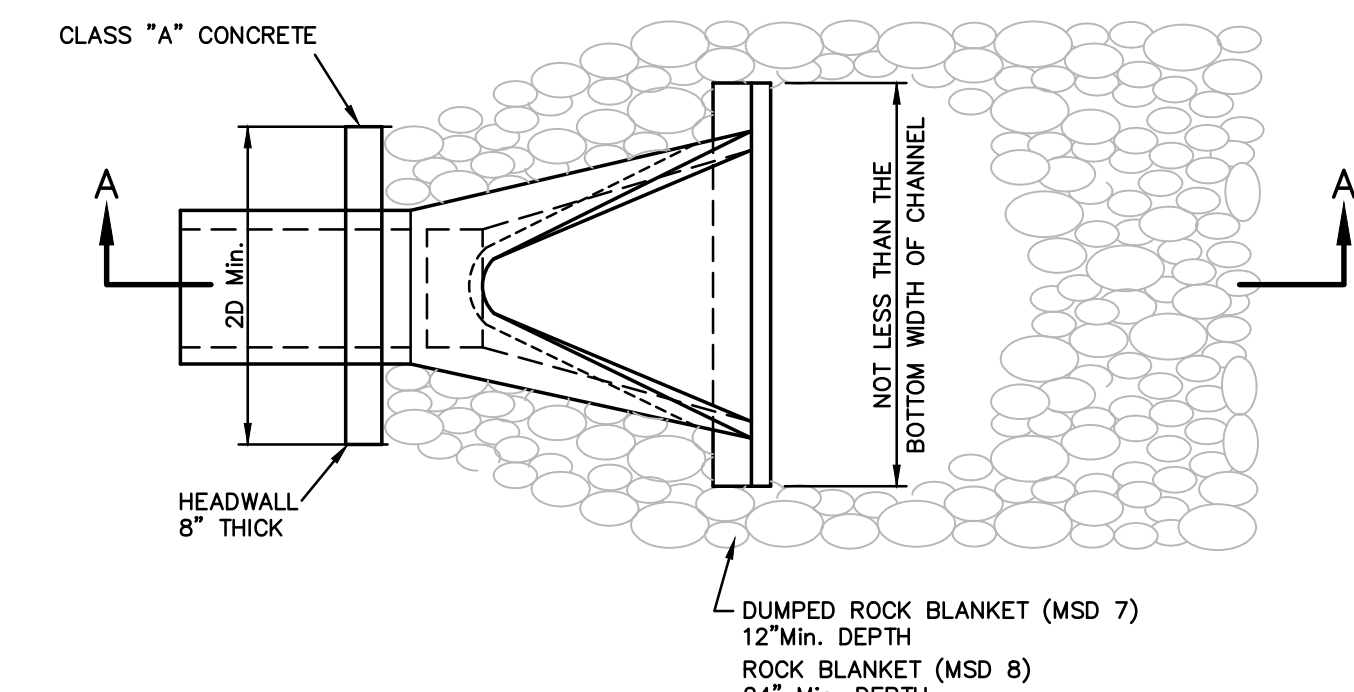


**PIPE BEDDING CLASS "C"**  
(FOR ALL PIPE EXCEPT REINFORCED CONCRETE PIPE)

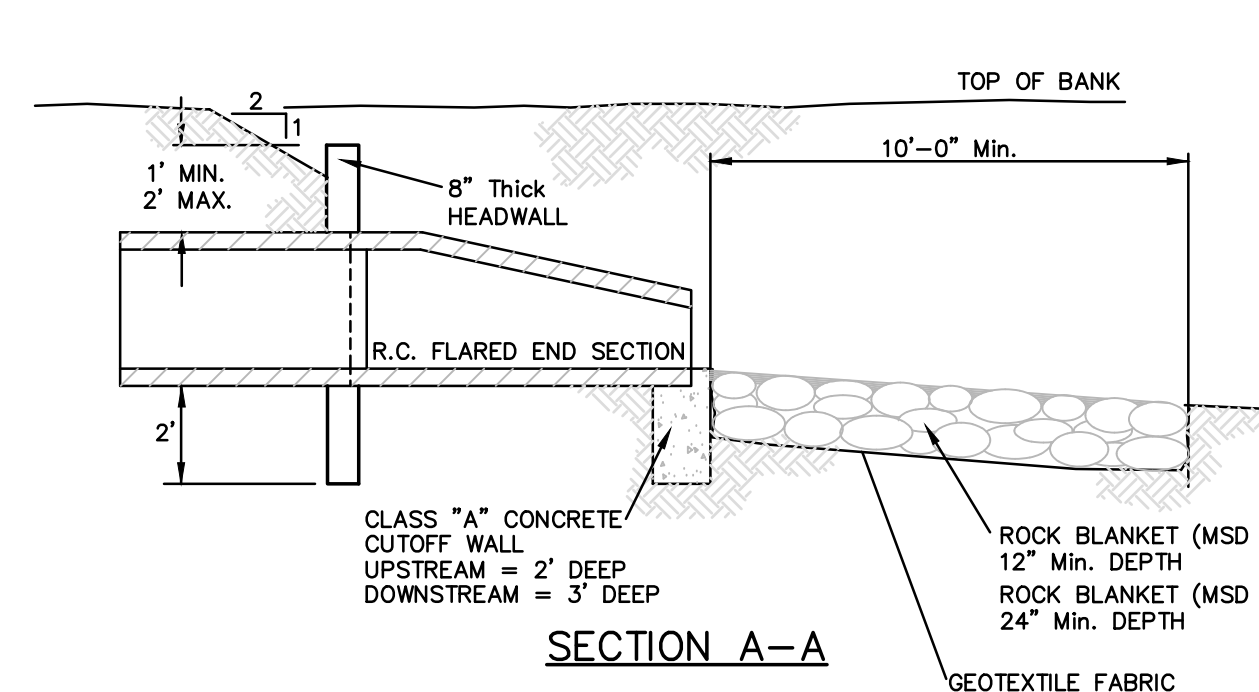


**PIPE BEDDING CLASS "C"**  
(MODIFIED FOR REINFORCED CONCRETE PIPE)

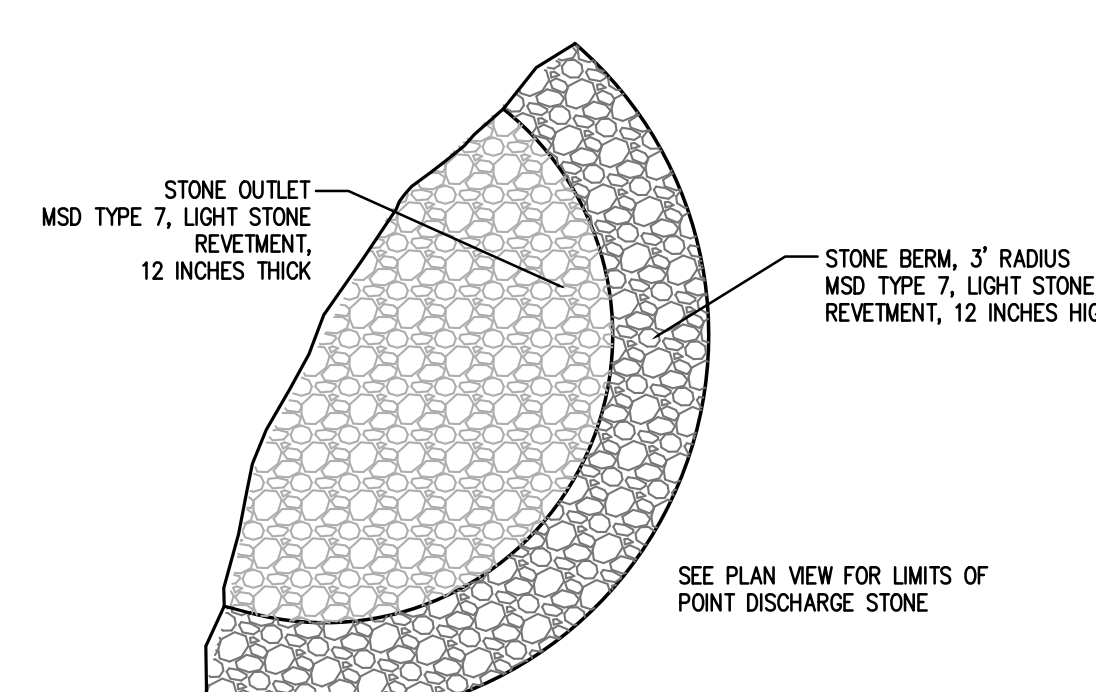
**PIPE BEDDING DETAILS**  
(n.t.s.)



**PLAN VIEW**



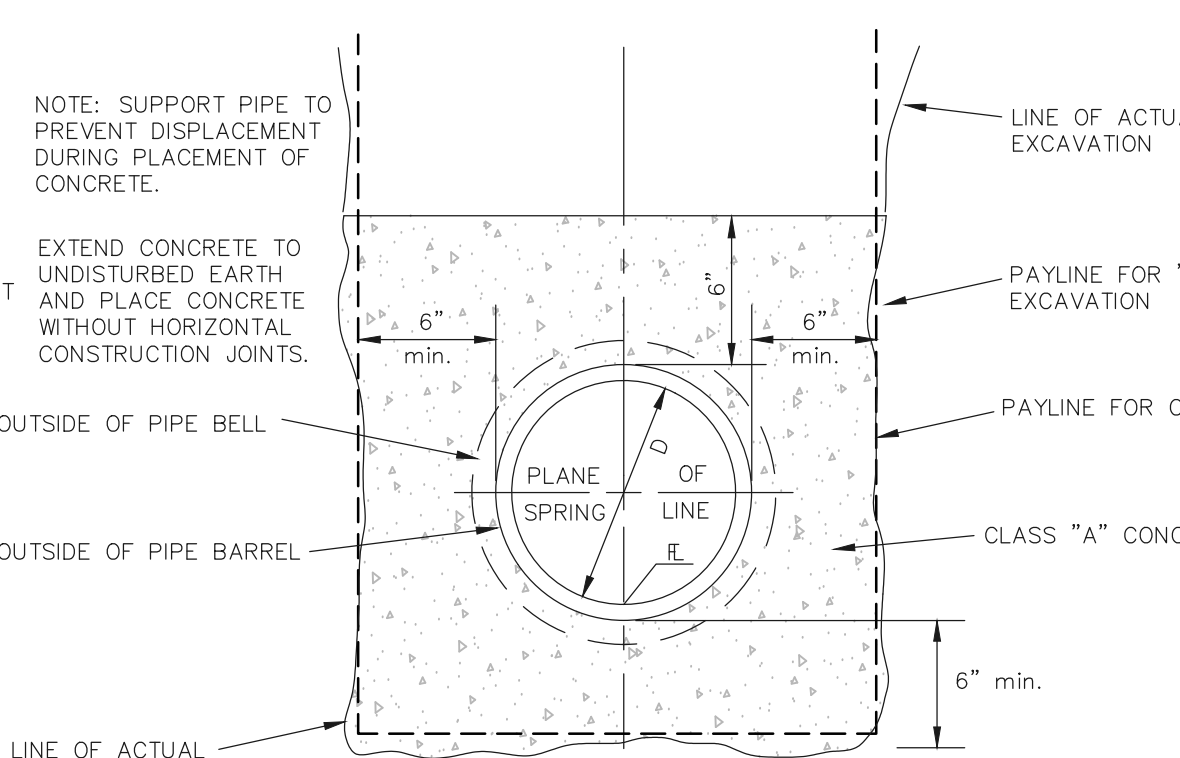
**SECTION A-A**



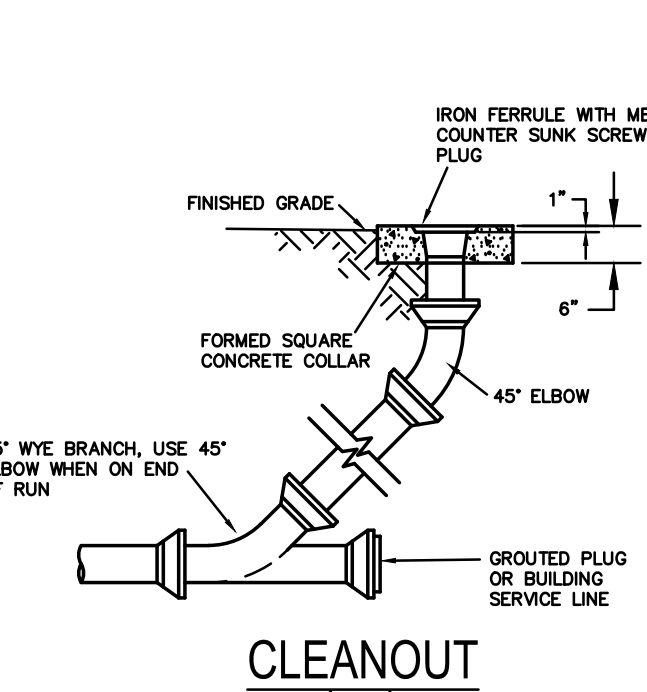
**END VIEW**

**FLARED END SECTION DETAIL**  
(n.t.s.)

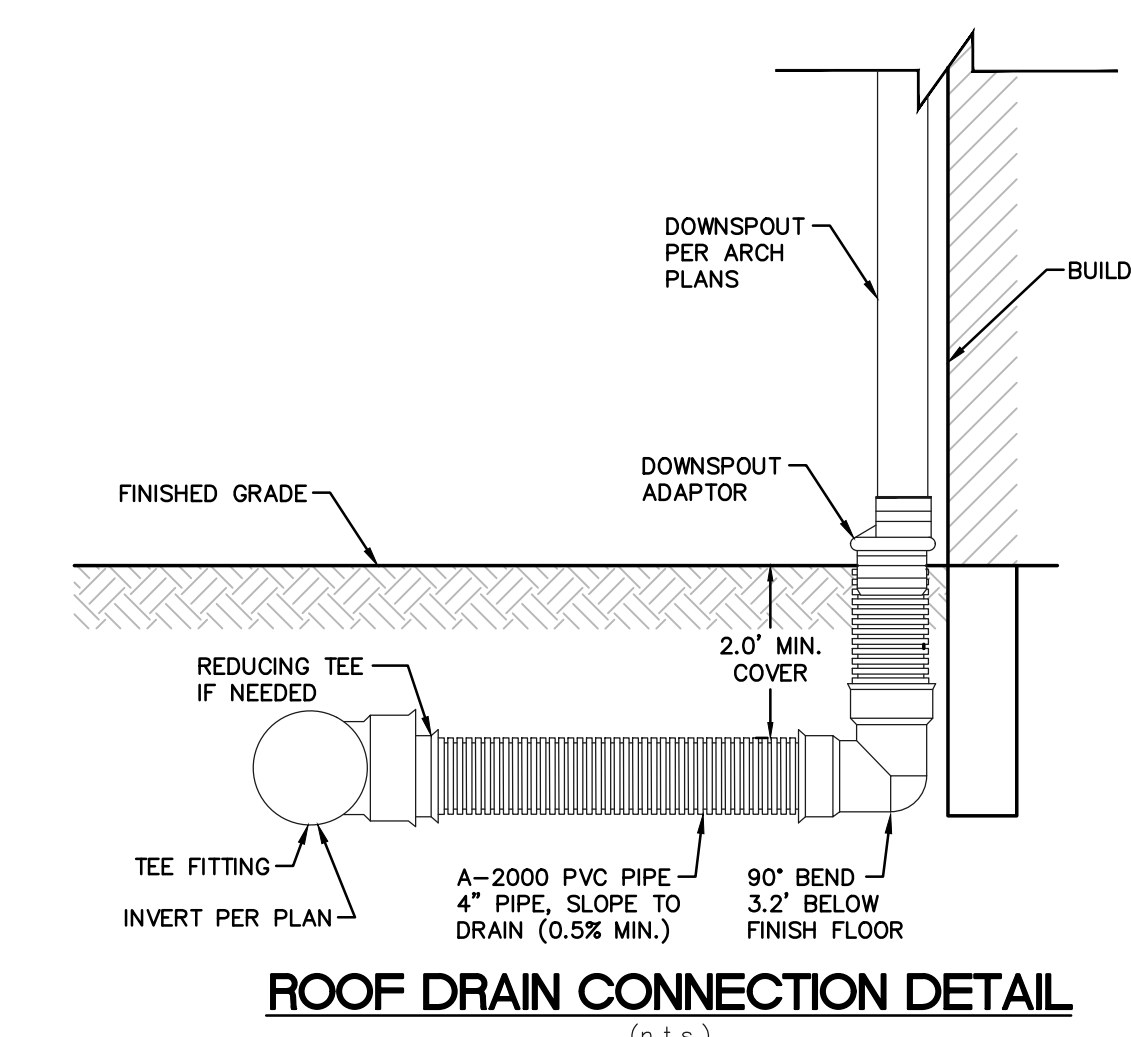
**POND LINER NOTE:**  
RETENTION POND LINER SHALL BE EITHER:  
A) 24" MINIMUM CLAY SOIL (MINIMUM 15% PASSING THE #200 SIEVE AND A MAXIMUM PERMEABILITY OF 1x10<sup>-5</sup> CM/SEC.  
B) A 30 MIL POLY LINER OR  
C) BENTONITE  
CONTRACTOR SHALL REFER TO MANUFACTURER RECOMMENDATIONS FOR INSTALLATION OF SYNTHETIC POND LINER.  
POND LINERS SHALL EXTEND TO THE NORMAL POOL ELEVATION OF THE POND.  
CONTRACTOR SHALL CONSULT PROJECT GEOTECHNICAL ENGINEER TO CONFIRM EXTENT OF CLAY LINER FOLLOWING REMOVAL OF EXISTING SEWERS LOCATED WITHIN DETENTION POND LIMITS.



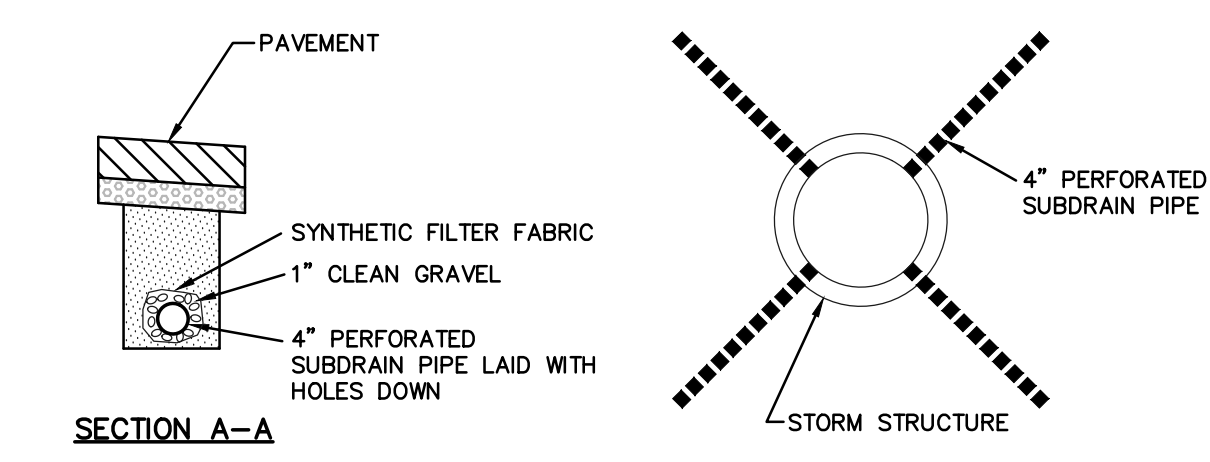
**CONCRETE ENCASEMENT DETAIL**  
(NTS)



**CLEANOUT**  
(n.t.s.)

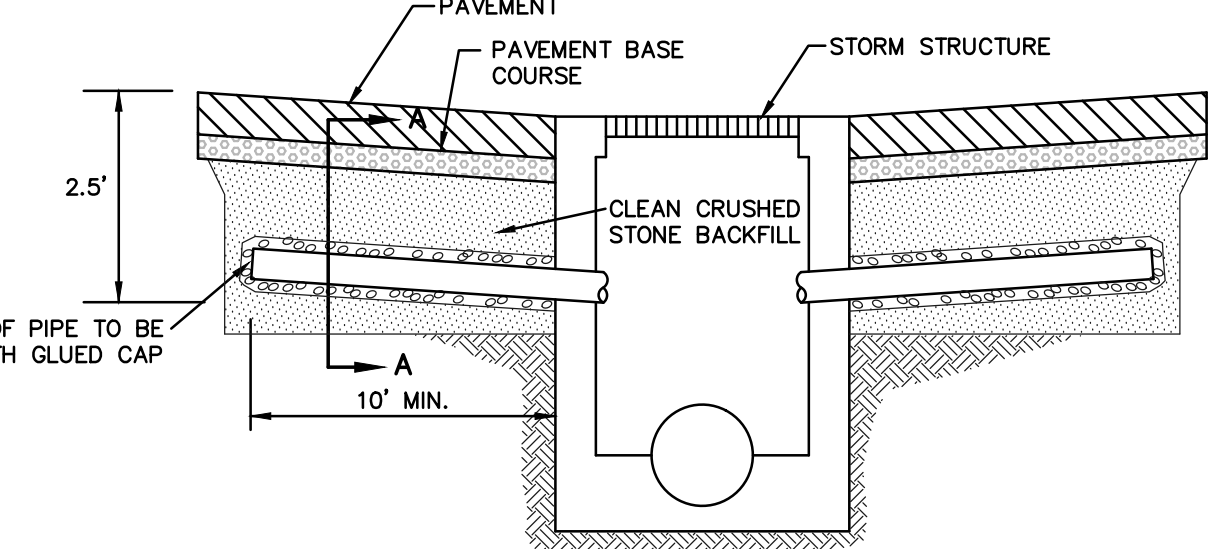


**ROOF DRAIN CONNECTION DETAIL**  
(n.t.s.)

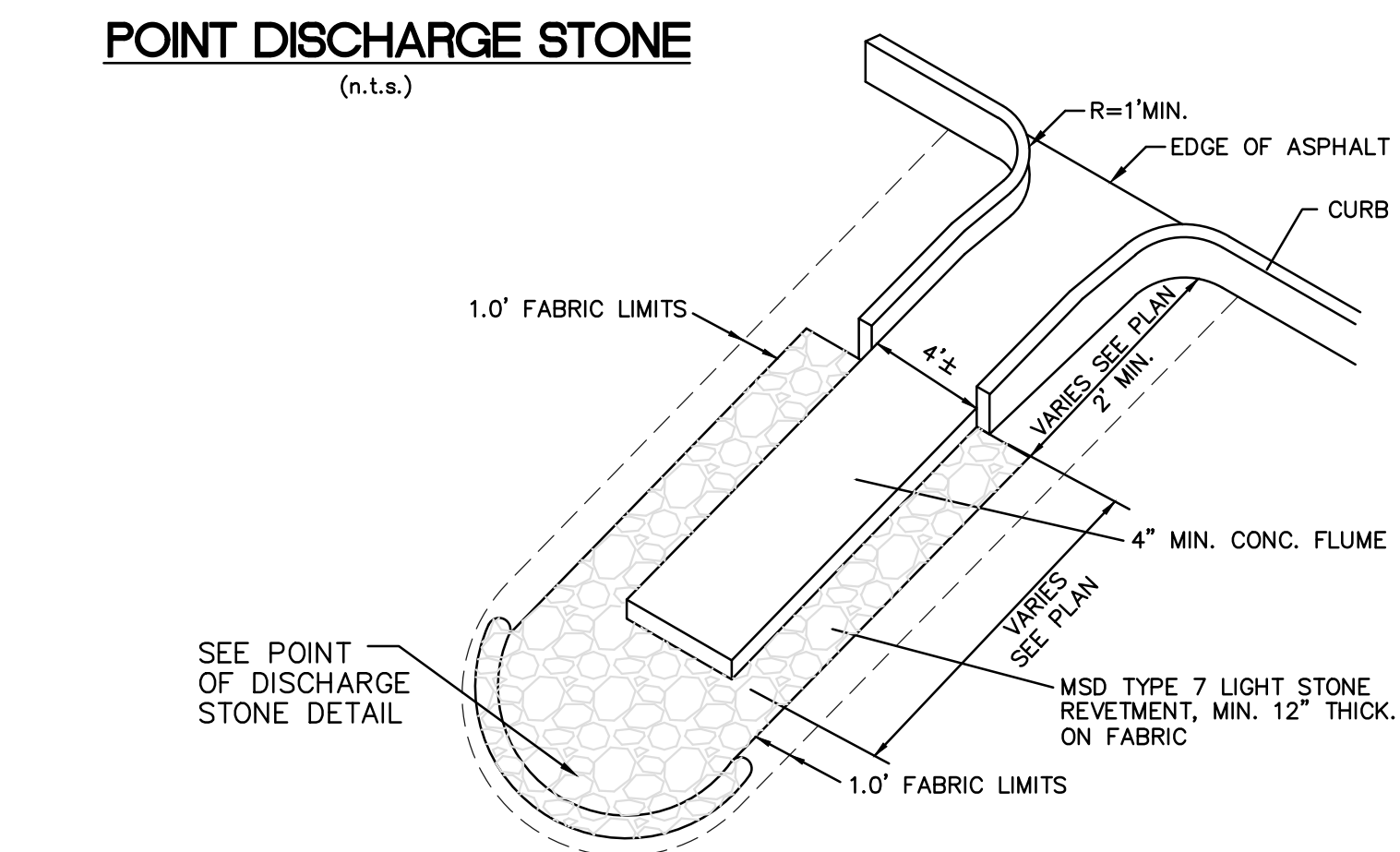


**SECTION A-A**

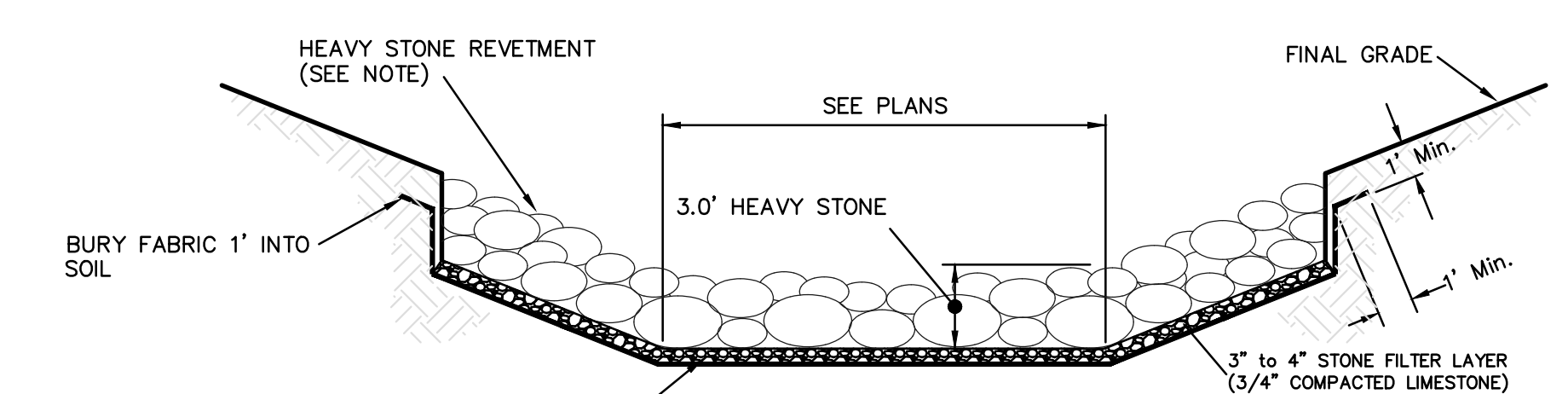
- NOTES:**  
1. STUB-OUT AGGREGATE DRAINS TO BE INSTALLED AT ALL ON-SITE STORM WATER INLET STRUCTURES (IN PAV'T)  
2. FOUR DRAINS TO BE INSTALLED AT GRATE INLET LOCATIONS—TWO ON EACH UPSTREAM SIDE.  
3. TWO DRAINS AT CURB INLET LOCATIONS.



**PAVEMENT DRAIN AT INLETS**  
(n.t.s.)

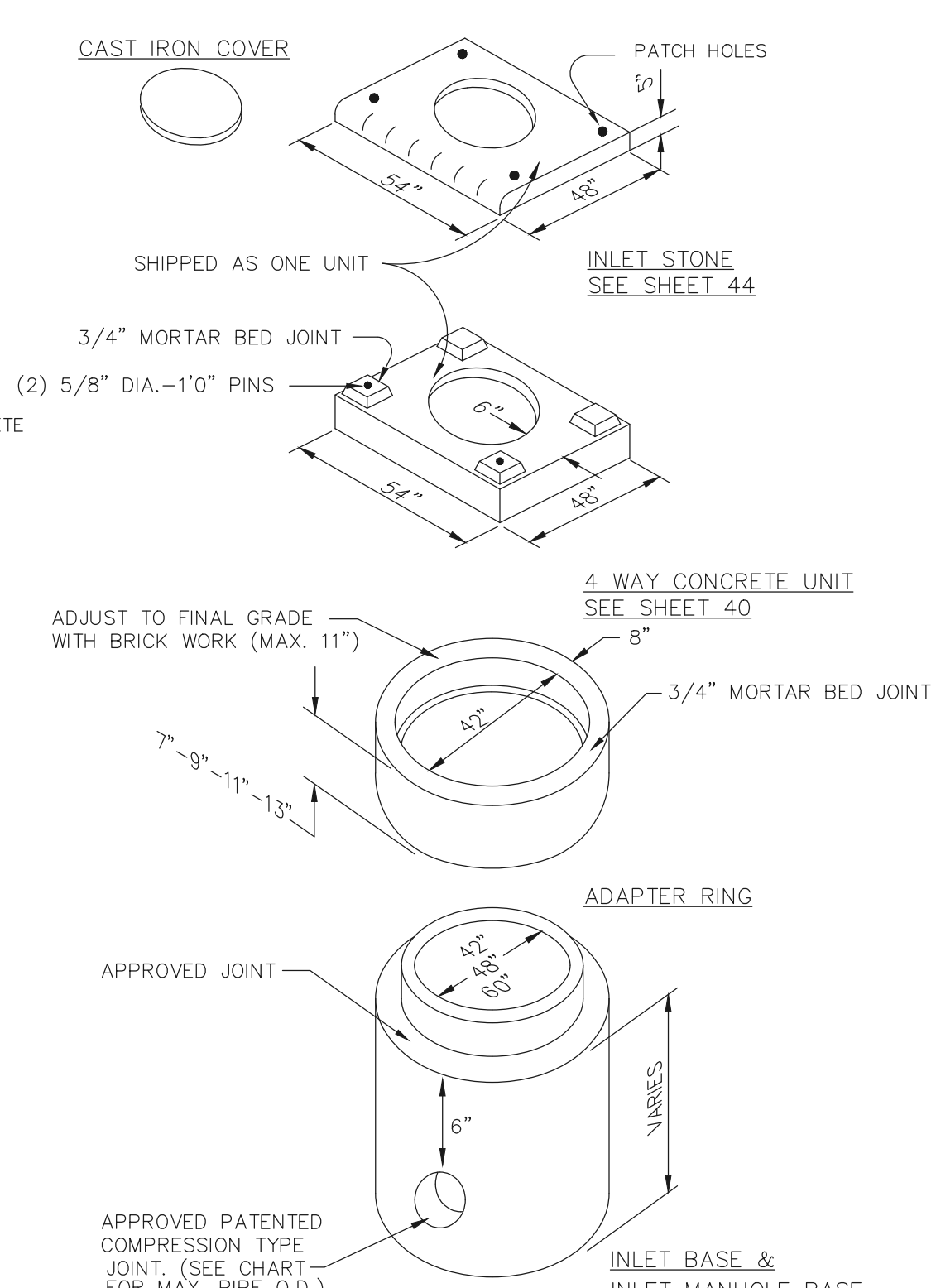


**CONCRETE FLUME DETAIL**  
N.T.S.

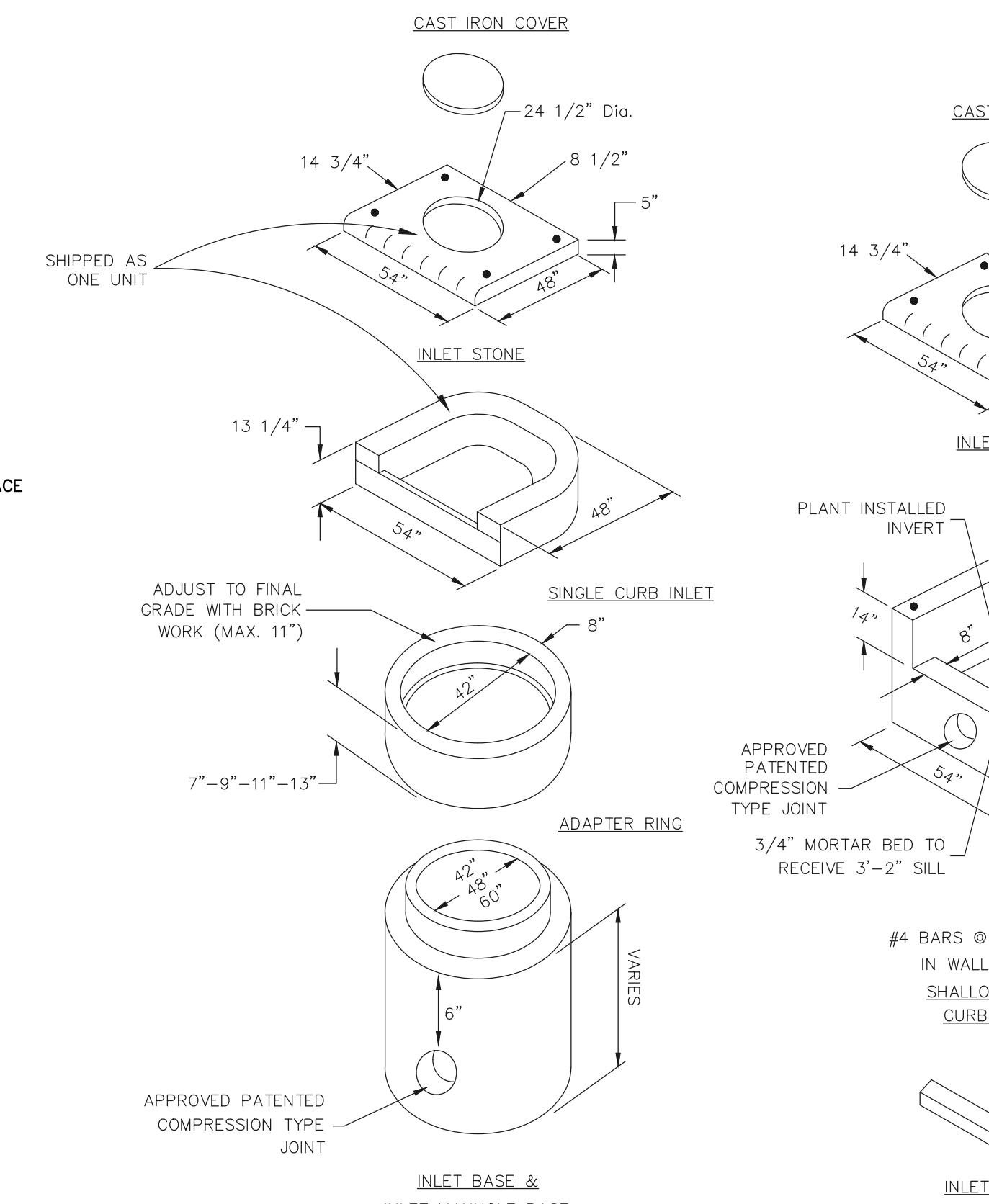


**HEAVY STONE REVETMENT DETAIL**  
N.T.S.

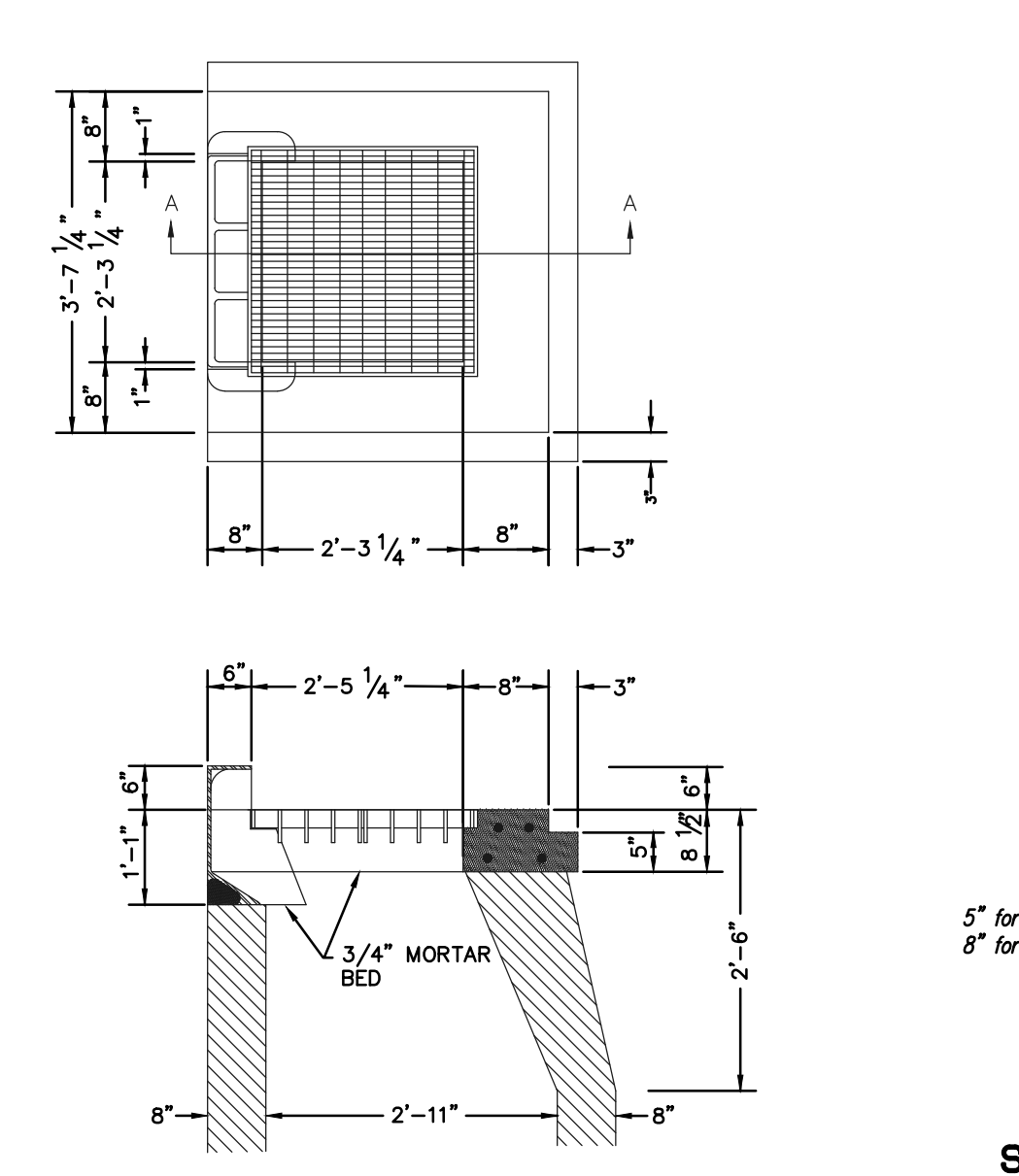
SEE PLAN FOR LOCATIONS AND DIMENSIONS



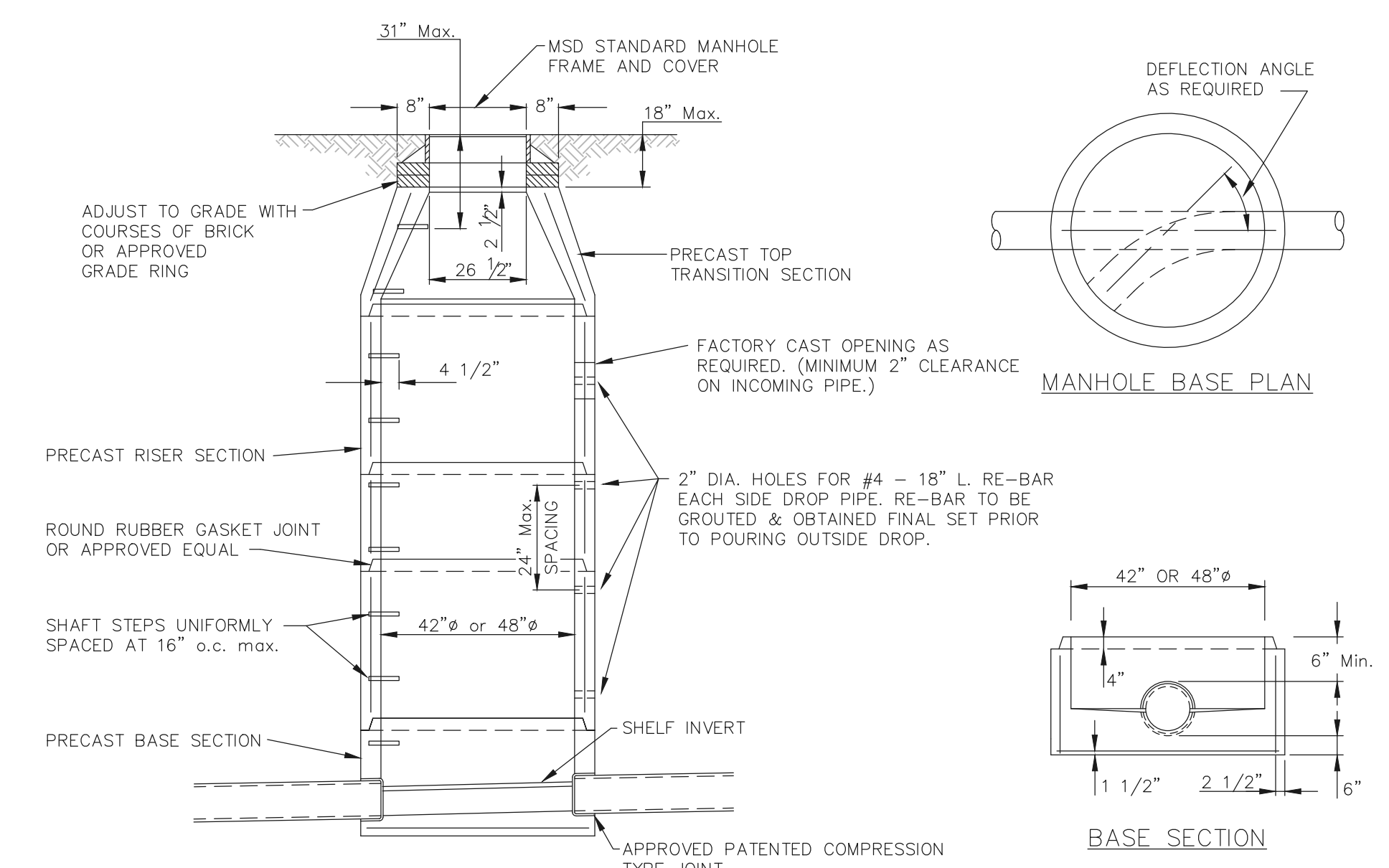
**PRECAST AREA INLET**  
(n.t.s.)



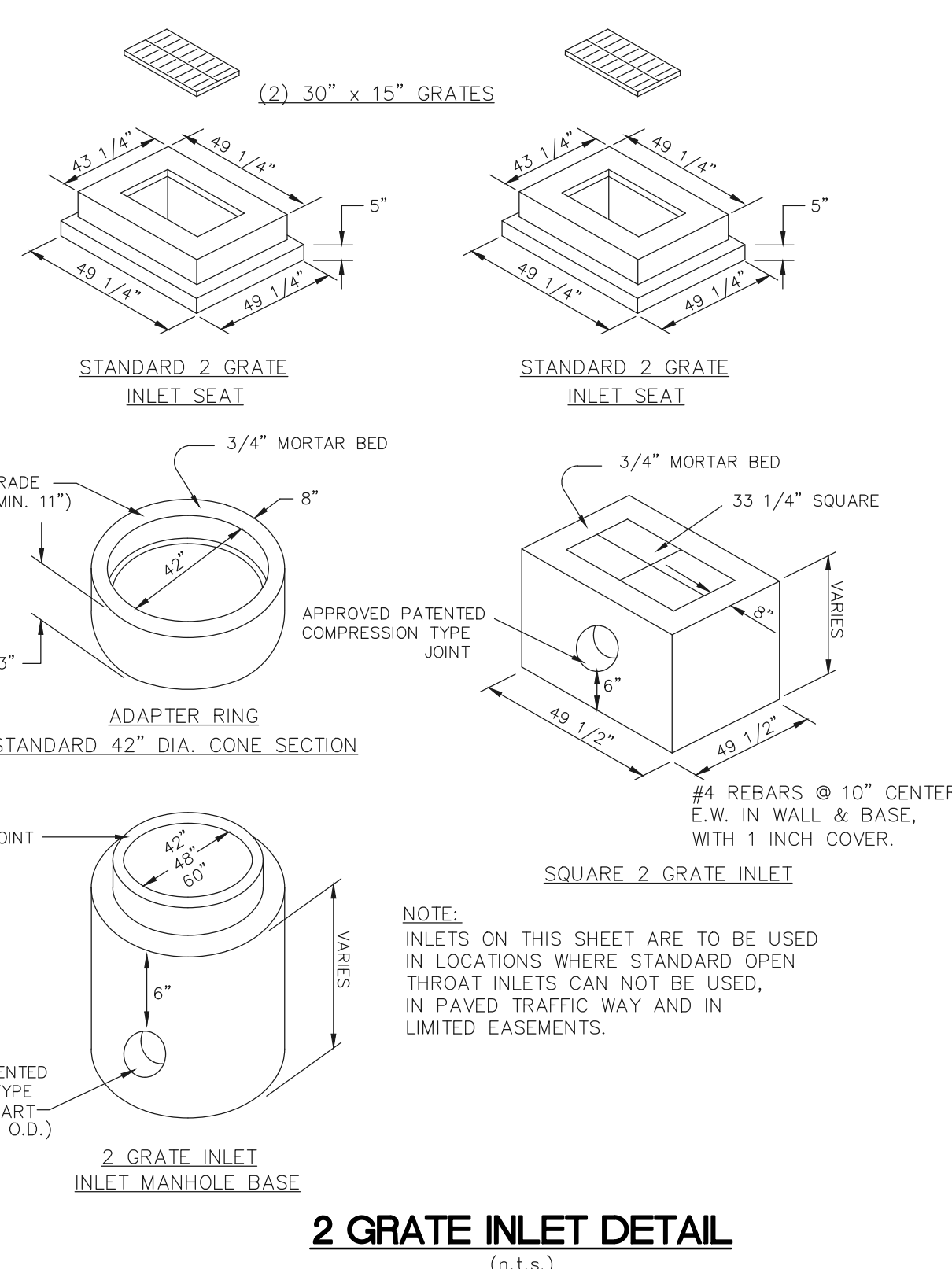
**CURB INLET DETAIL**  
(n.t.s.)



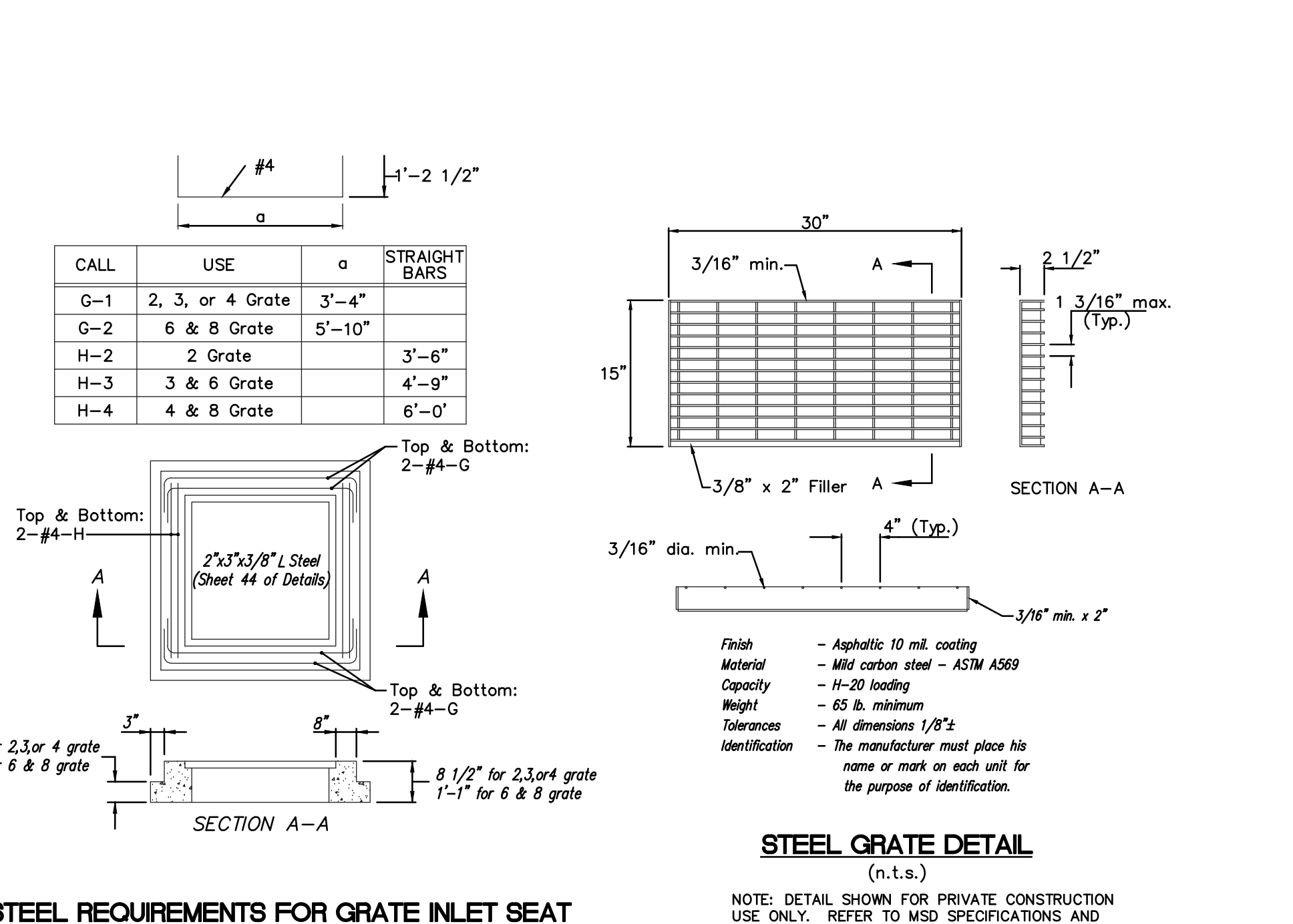
**2 GRATE INLET WITH SIDE INTAKE DETAIL**  
(n.t.s.)



**PRECAST MANHOLE**  
(n.t.s.)



**2 GRATE INLET DETAIL**  
(n.t.s.)



**STEEL REQUIREMENTS FOR GRATE INLET SEAT**  
(n.t.s.)

NOTE: DETAIL SHOWN FOR PRIVATE CONSTRUCTION USE ONLY. REFER TO MSD SPECIFICATIONS AND DETAILS FOR PUBLIC SEWER CONSTRUCTION.