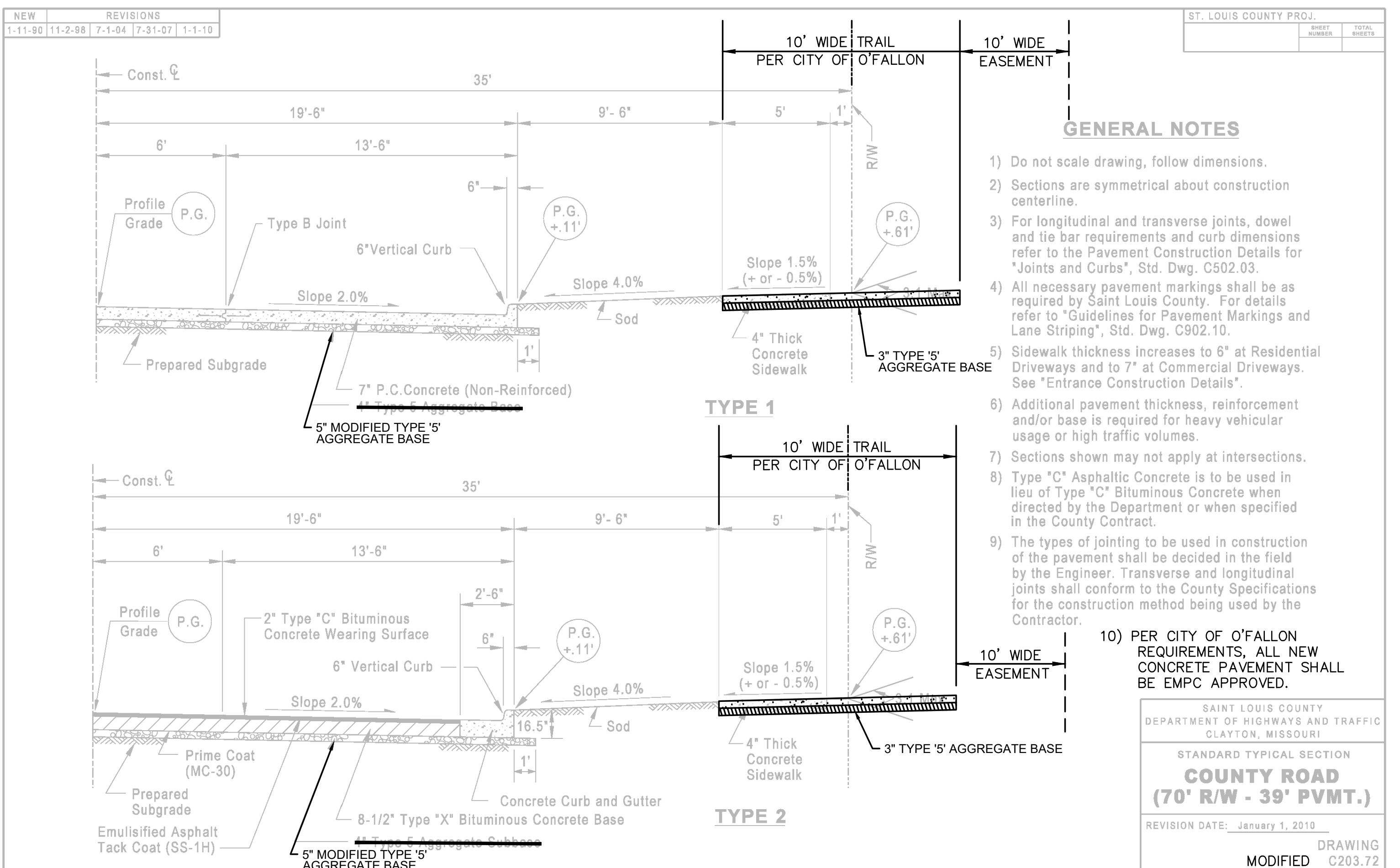


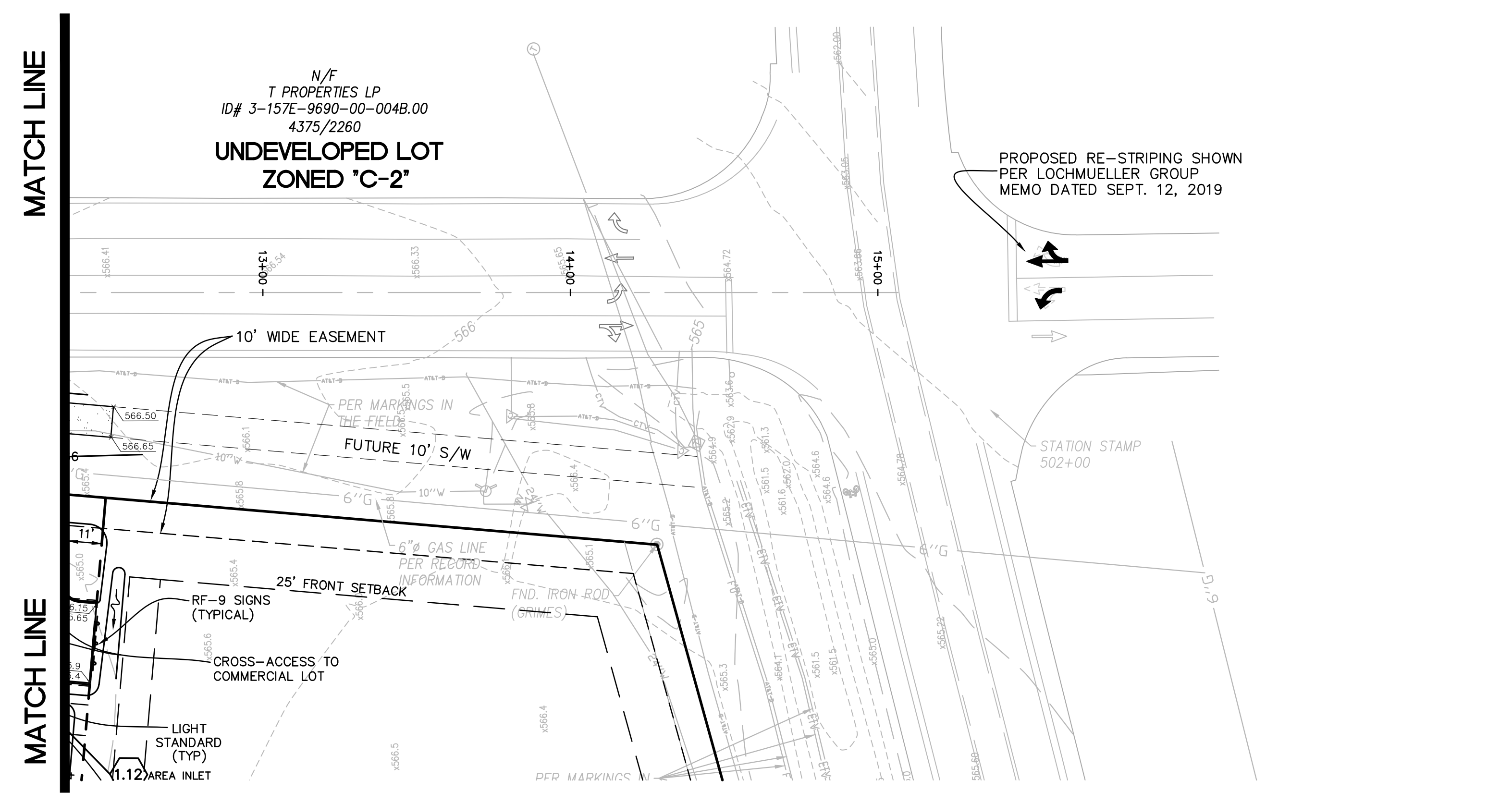
PLAN VIEW WELDON SPRING ROAD WIDENING  
SCALE: 1"=30'



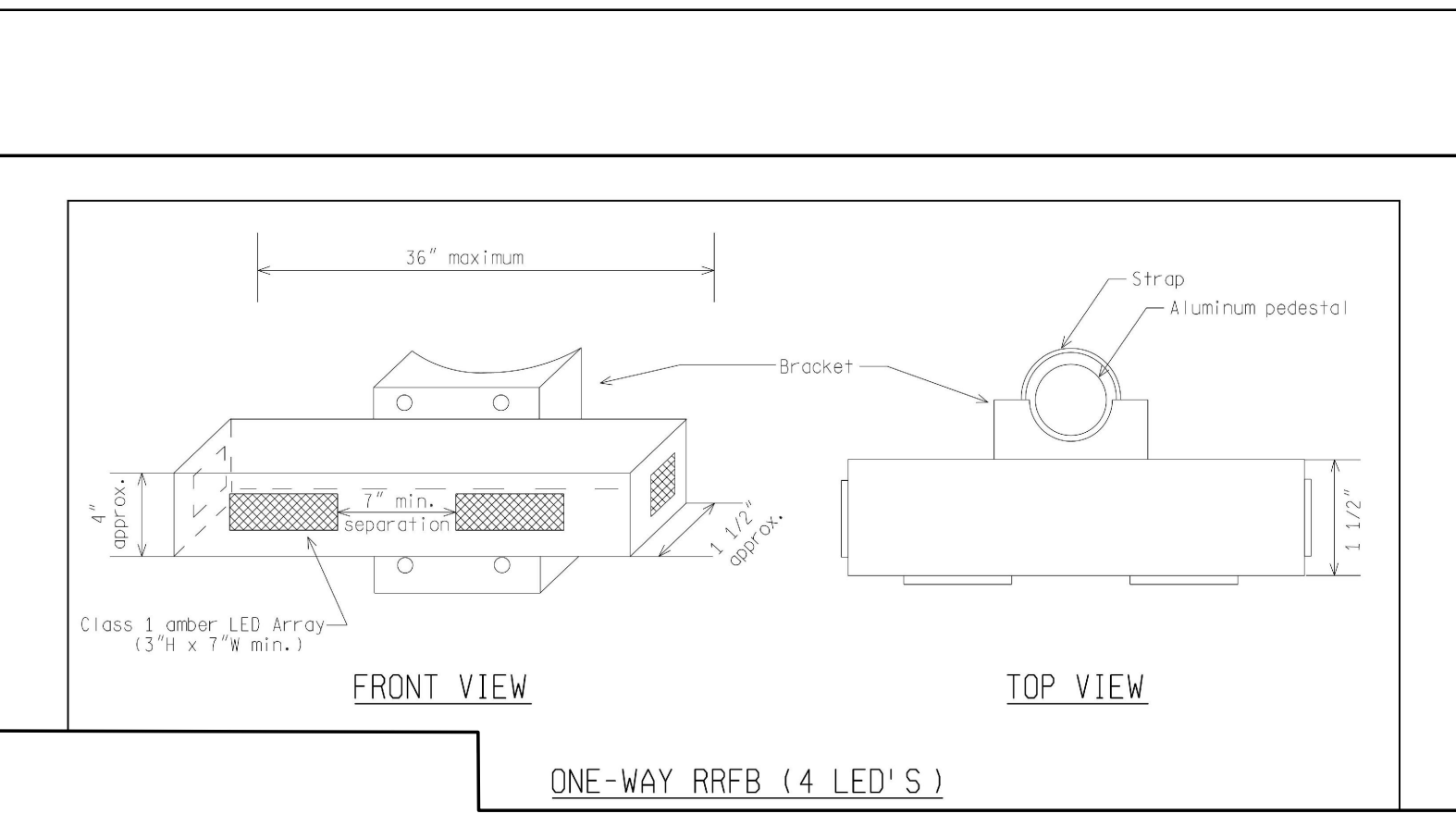
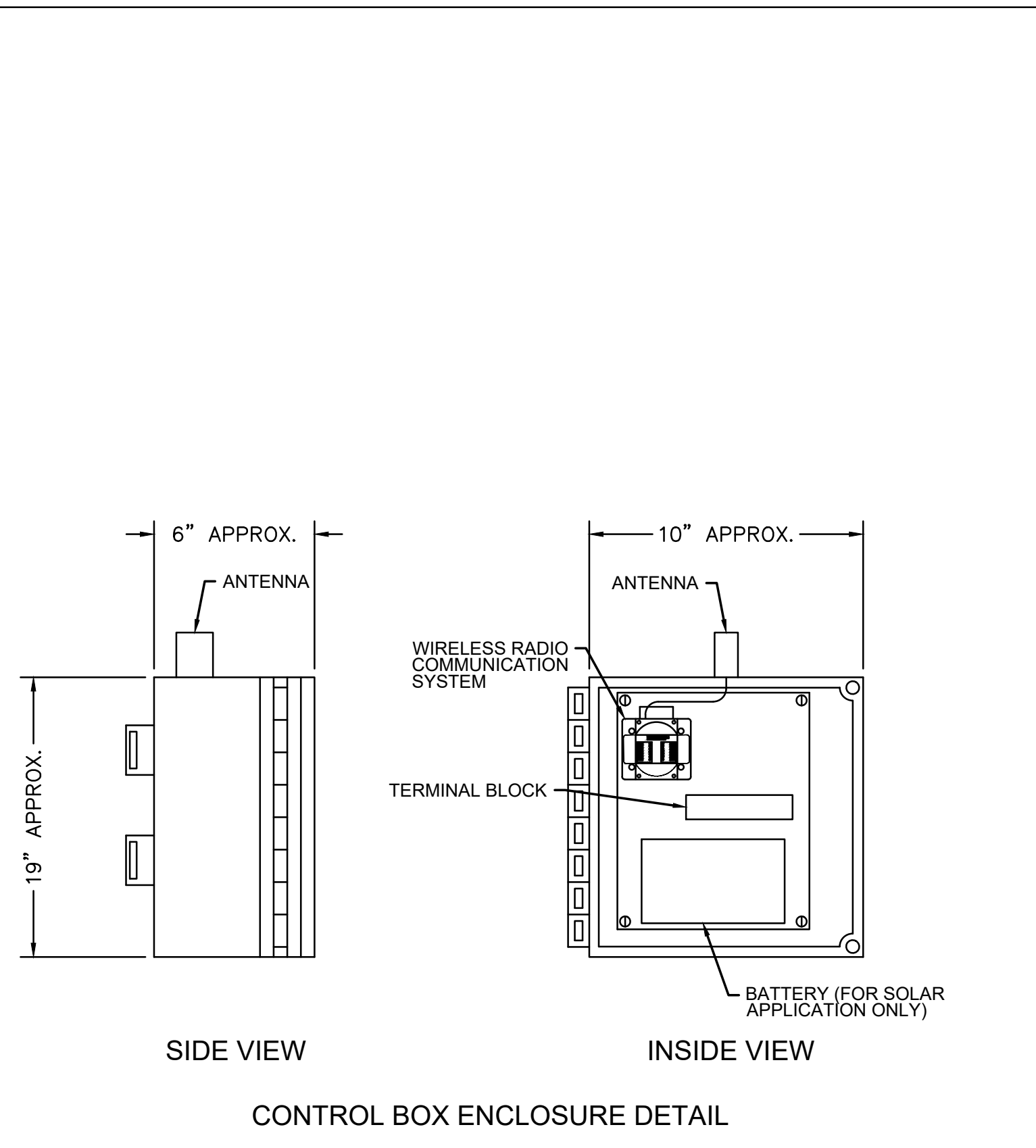
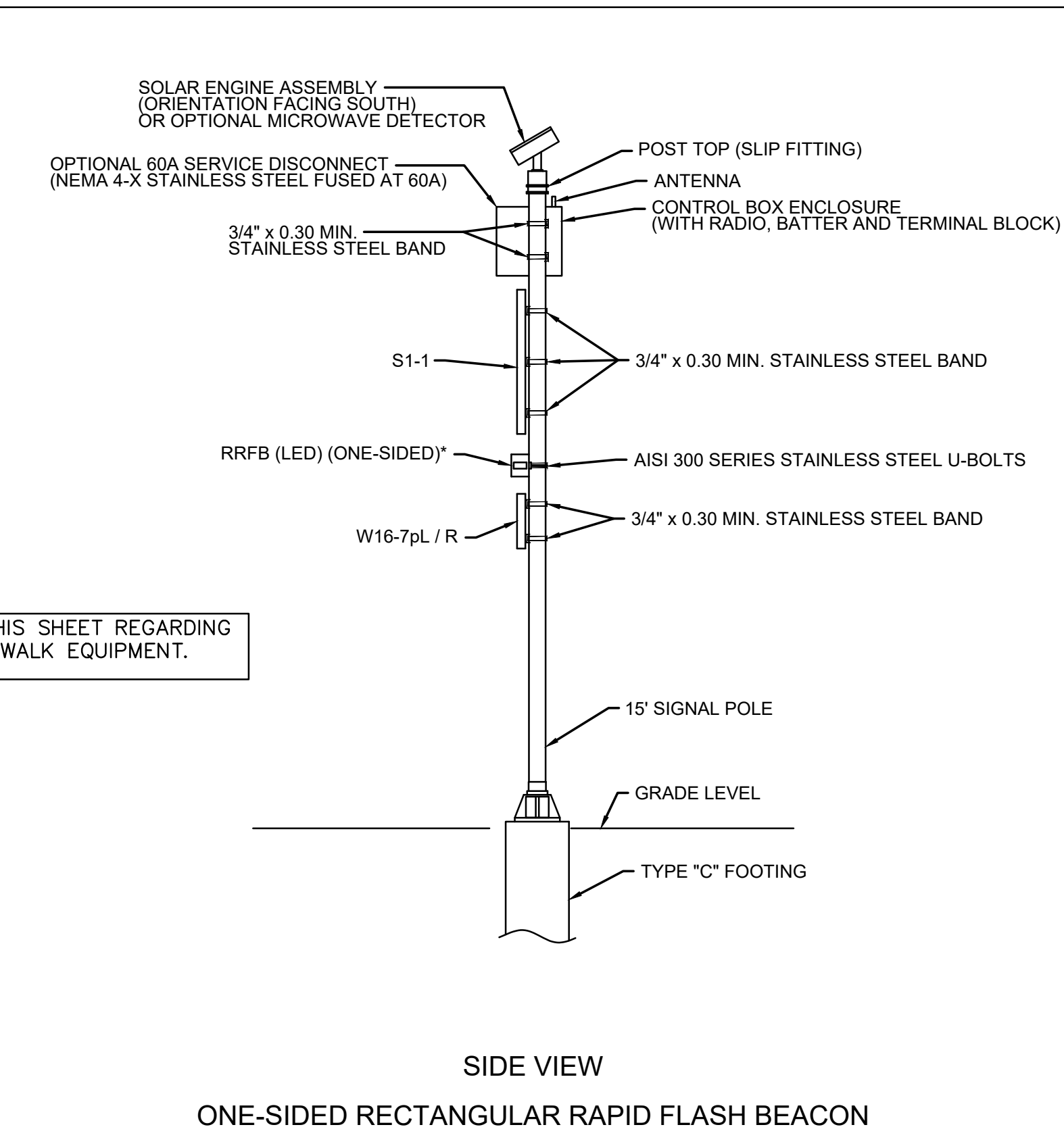
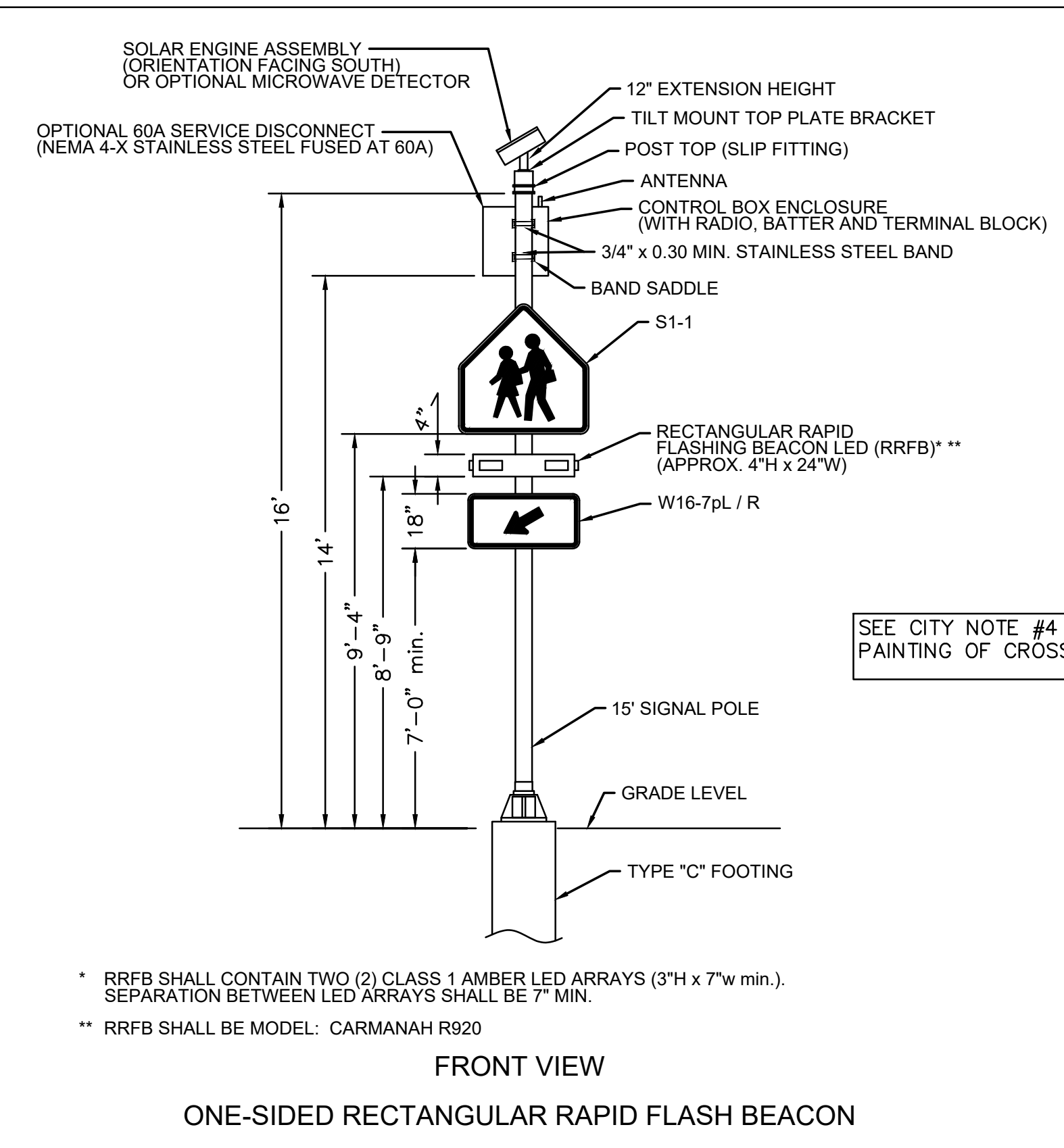
ULTIMATE WELDON SPRING ROAD SECTION

- GENERAL NOTES**
- Do not scale drawing, follow dimensions.
  - Sections are symmetrical about construction centerline.
  - For longitudinal and transverse joints, dowel and tie bar requirements and curb dimensions refer to the Pavement Construction Details for "Joints and Curbs", Std. Dwg. C502.03.
  - All necessary pavement markings shall be as required by Saint Louis County. For details refer to "Guidelines for Pavement Markings and Lane Striping", Std. Dwg. C902.10.
  - Sidewalk thickness increases to 6" at Residential Driveways and to 7" at Commercial Driveways. See "Entrance Construction Details".
  - Additional pavement thickness, reinforcement and/or base is required for heavy vehicular usage or high traffic volumes.
  - Sections shown may not apply at intersections.
  - Type "C" Asphaltic Concrete is to be used in lieu of Type "C" Bituminous Concrete when directed by the Department or when specified in the County Contract.
  - The types of jointing to be used in construction of the pavement shall be decided in the field by the Engineer. Transverse and longitudinal joints shall conform to the County Specifications for the construction method being used by the Contractor.
  - PER CITY OF O'FALLON REQUIREMENTS, ALL NEW CONCRETE PAVEMENT SHALL BE EMPC APPROVED.

SAINT LOUIS COUNTY  
DEPARTMENT OF HIGHWAYS AND TRAFFIC  
CLAYTON, MISSOURI  
STANDARD TYPICAL SECTION  
**COUNTY ROAD  
(70' R/W - 39' P.V.M.T.)**  
REVISION DATE: January 1, 2019  
DRAWING  
MODIFIED C203.72



PLAN VIEW WELDON SPRING ROAD WIDENING  
SCALE: 1"=30'



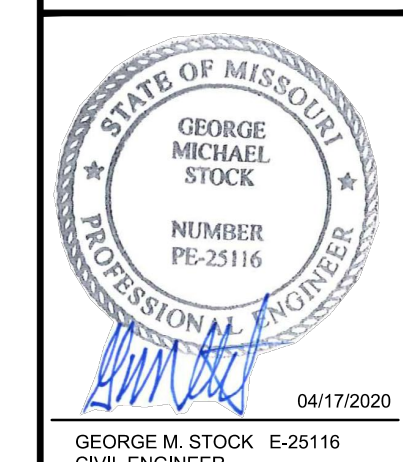
**CITY NOTES**

- ALL PAVING (PUBLIC OR PRIVATE) TO BE IN ACCORDANCE WITH ST. LOUIS COUNTY STANDARDS AND SPECIFICATIONS EXCEPT AS MODIFIED BY THE CITY OF O'FALLON ORDINANCES.
- SEE SHEET C2.0 FOR ADDITIONAL ROADWAY NOTES AND SPECIFICATIONS.
- ALL PERMANENT TRAFFIC CONTROL WILL BE PER M.U.T.C.D. OR MODOU STANDARDS. S1-1 FROM M.U.T.C.D. MANUAL WILL BE USED AT ALL CROSSWALK LOCATIONS ACCOMPANIED WITH EITHER W16-9p OR W16-7p SIGNS.
- ALL TRAFFIC SIGNALS, STREET SIGNS, SIGN POSTS, BACK AND BRACKET ARMS SHALL BE PAINTED BLACK USING CARBOLINE RUST BOND PENETRATING SEALER SG AND CARBOLINE 133 HB PAINT (OR EQUIVALENT AS APPROVED BY CITY OF O'FALLON AND MODOU).

STOCK AND ASSOCIATES CONSULTING ENGINEERS, INC. AND THE UNDERSIGNED ENGINEER HAVE NO RESPONSIBILITY FOR SERVICES PROVIDED BY OTHERS TO IMPLEMENT THE IMPROVEMENTS SHOWN ON THIS PLAN. ALL OTHERS DEMANDS WHERE THE UNDERSIGNED ENGINEER'S SEAL APPLIES. THE CONSTRUCTION MEANS AND METHODS ARE THE SOLE RESPONSIBILITY OF THE OWNER AND CONTRACTOR. STOCK AND ASSOCIATES CONSULTING ENGINEERS, INC. HAS NO RESPONSIBILITY TO VERIFY FINAL IMPROVEMENTS AS SHOWN ON THIS PLAN UNLESS SPECIFICALLY ENGAGED AND AUTHORIZED TO DO SO BY THE OWNER OR CONTRACTOR.

PREPARED BY:  
**Stock & Associates**  
Consulting Engineers, Inc.  
257 Oberlinfield Business Parkway  
St. Louis, MO 63105 PH: (636) 500-9000 FAX: (636) 530-9300  
e-mail: general@stockassoc.com  
Web: www.stockassoc.com

SITE IMPROVEMENT PLANS FOR:  
**WATERMARK APARTMENTS AT O'FALLON**  
CRUSHER ROAD & WELDON SPRING ROAD  
CITY OF O'FALLON, ST. CHARLES COUNTY, MISSOURI 63366



REVISIONS:

1	01/16/2019	- 60% PRINTING
2	01/16/2019	- PERMIT SET
3	03/25/2020	- REVISED PER OWNER / CITY / UTILITY COMMENTS
4	04/17/2020	- AGENDUM A

DRAWN BY: T.S.J.M.B. CHECKED BY: G.M.S.  
DATE: 01/16/2019 JOB NO: 219-6494  
SHEET TITLE: **WELDON SPRING ROAD DETAILS**  
SHEET NO: **C10.2**