

**LOCATION MAP**  
Not to Scale

**INDEX**

- SHEET 1 SITE PLAN
- SHEET 2 GRADING PLAN
- SHEET 3 SEWER PROFILE / ENTRANCE DETAILS
- SHEET 4 CONSTRUCTION NOTES / CONSTRUCTION DETAILS
- SHEET 5 CONSTRUCTION DETAILS
- SHEET 6 CONSTRUCTION DETAILS

**NOTES**

1. Site Address: 3995 Crusher Drive, O'Fallon, MO 63368
2. Existing Site Area - 71,289 Sq. Ft. (1.64 Ac.)
3. Site Zoning - C3 - Highway Commercial District
4. Fire District - O'Fallon Fire Protection District
5. Utilities - Water: Public Water Supply District #2; Sewer: Duckett Creek Sewer District; Electric: AmerenUE; Telephone: Century-Tel Telephone; Gas: Laclede Gas Company
6. Site Benchmark: Top of sanitary manhole at the southeast corner of the Parkside villa property ELEVATION 471.33
7. PARKING CALCULATIONS  
AREA OF BUILDING FLOOR 2,460 SQ. FT.  
PARKING SPACE REQUIREMENT 1 / 250 SQ. FT.  
PARKING REQUIRED 10  
SPACES PROVIDED 15 REGULAR  
1 HANDICAPPED
8. This site is located on FEMA Panel 29183C0430 dated Aug. 1996.
9. All dimensions to face of curb unless otherwise noted.

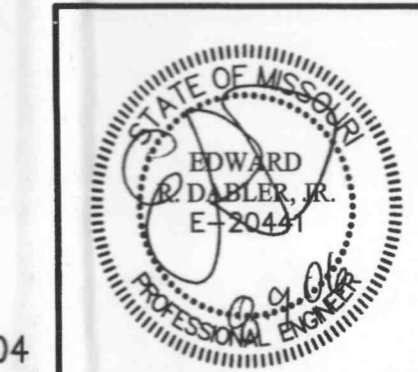
The signed and sealed original of this drawing is on file at the offices of The Clayton Engineering Company, Inc. The signed and sealed original is the official document and shall take precedence over any digital version.

REVISIONS		
1	7/13/06	AJM Revised per City of O'Fallon comments

**SITE PLAN**  
**Kingsmill Crossing - Out Lot**

Prepared for: **WATERWAY GAS & WASH**  
727 GODDARD AVENUE  
CHESTERFIELD, MO. 63005  
636-537-1111

Copyright 2006  
Clayton Engineering Co.  
All Rights Reserved

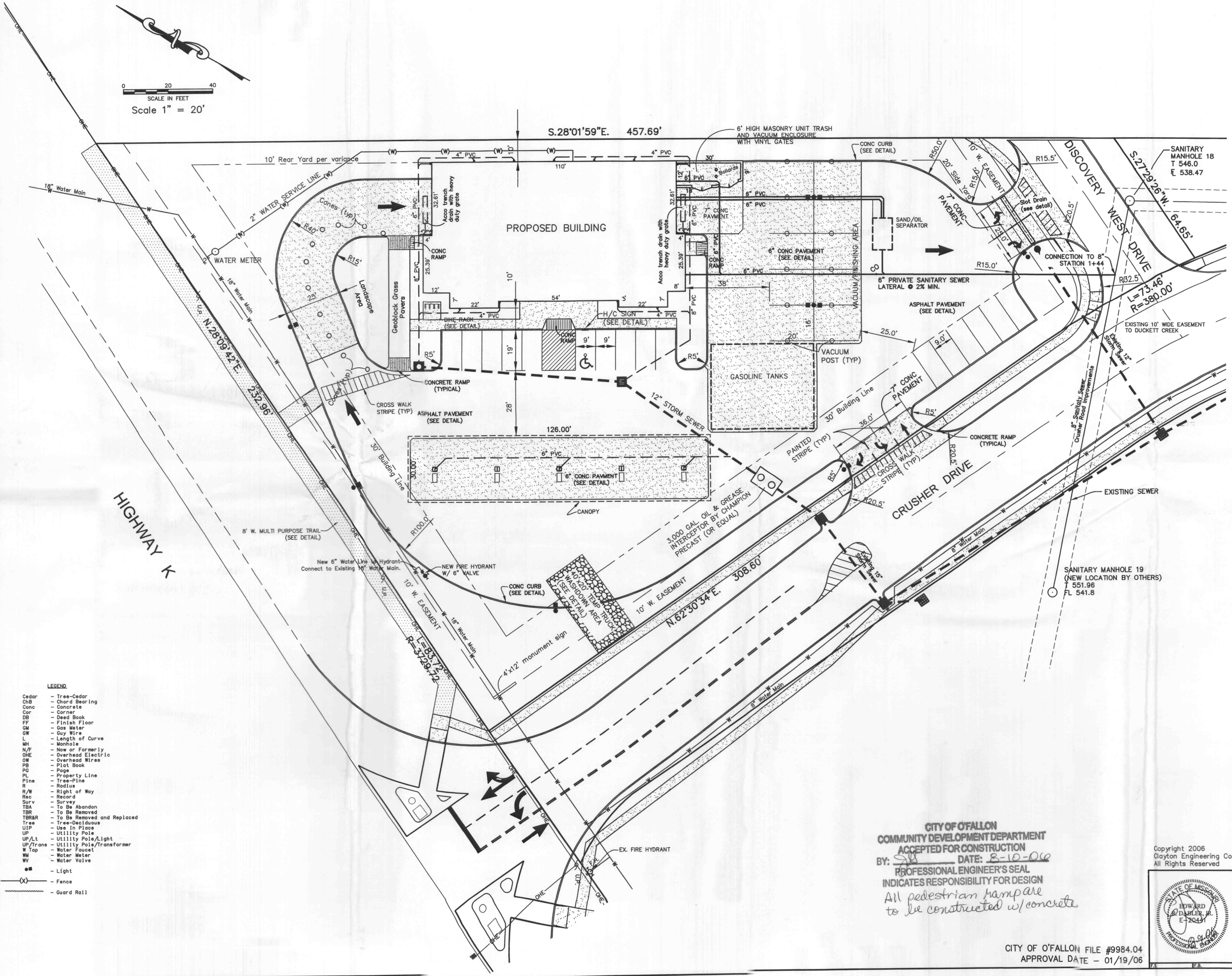


the clayton engineering company, inc.  
ENGINEERS • SURVEYORS • PLANNERS  
11920 WESTLINE INDUSTRIAL DRIVE  
ST. LOUIS, MISSOURI 63146  
(314) 692-8888 FAX: (314) 692-8888  
clayton-engineering.com

Designed	ERD
Drawn	AJM
Checked	ERD
Date	4/17/06
Project Number	05048
Sheet Number	1 of 6

CITY OF O'FALLON  
COMMUNITY DEVELOPMENT DEPARTMENT  
ACCEPTED FOR CONSTRUCTION  
BY: *SW* DATE: 8-10-06  
PROFESSIONAL ENGINEER'S SEAL  
INDICATES RESPONSIBILITY FOR DESIGN  
*All pedestrian rampare to be constructed w/ concrete*

CITY OF O'FALLON FILE #9984.04  
APPROVAL DATE - 01/19/06



- LEGEND**
- Cedar - Tree-Cedar
  - ChB - Chord Bearing
  - Conc - Concrete
  - Cor - Corner
  - DB - Dead Book
  - FF - Finish Floor
  - GM - Gas Meter
  - GW - Guy Wire
  - L - Length of Curve
  - MH - Manhole
  - N/F - Now or Formerly
  - OHE - Overhead Electric
  - OW - Overhead Wires
  - PB - Plat Book
  - PG - Page
  - PL - Property Line
  - PLN - Tree-Line
  - R - Radius
  - R/W - Right of Way
  - Rec - Record
  - Surv - Survey
  - TBA - To Be Abandon
  - TBR - To Be Removed
  - TBR&R - To Be Removed and Replaced
  - Tree - Tree-Deicious
  - UIP - Use in Place
  - UP - Utility Pole
  - UP/Lt - Utility Pole/Light
  - UP/Trans - Utility Pole/Transformer
  - W/Facet - Water Facet
  - WM - Water Meter
  - WV - Water Valve
  - Light - Light
  - (X) - Fence
  - Guard Rail