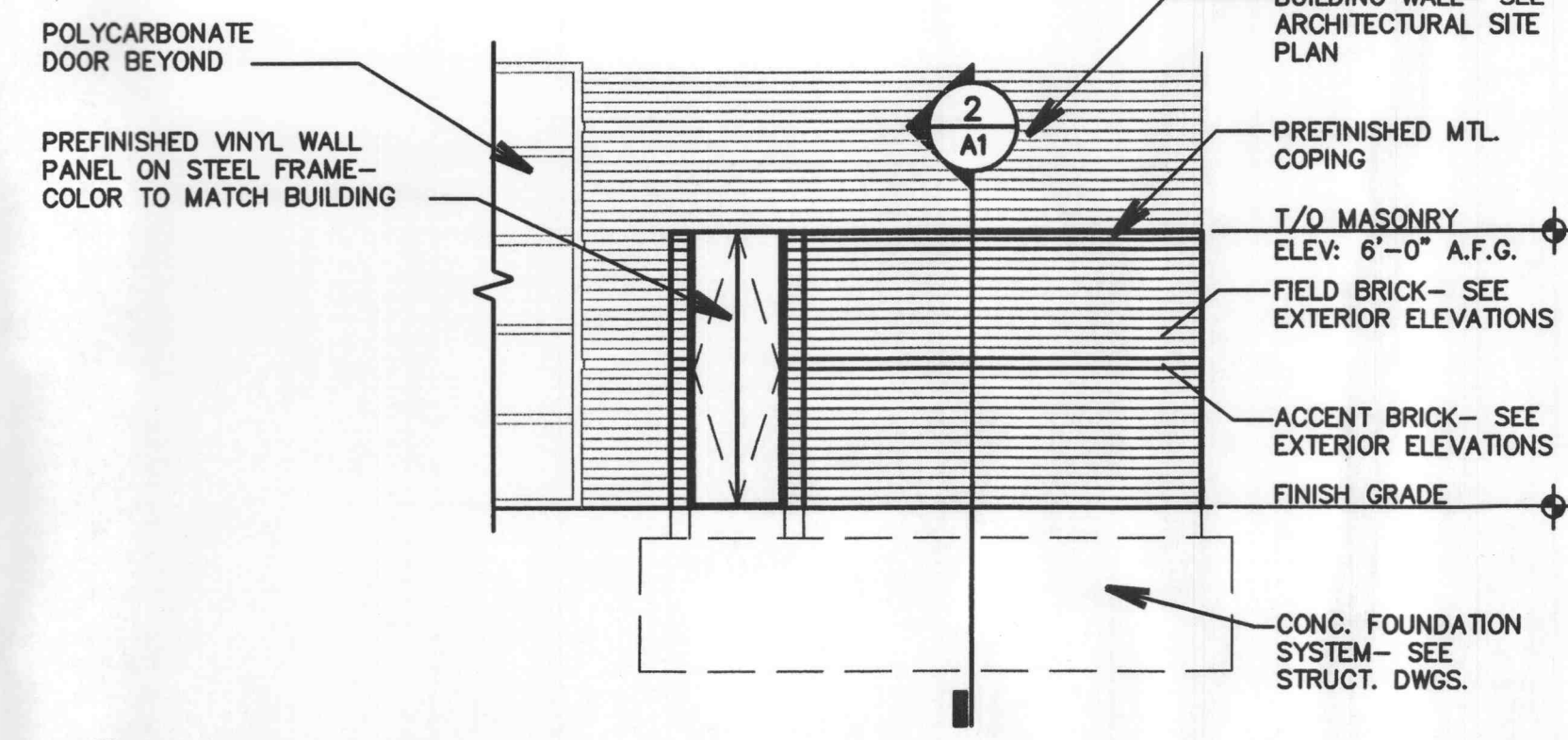
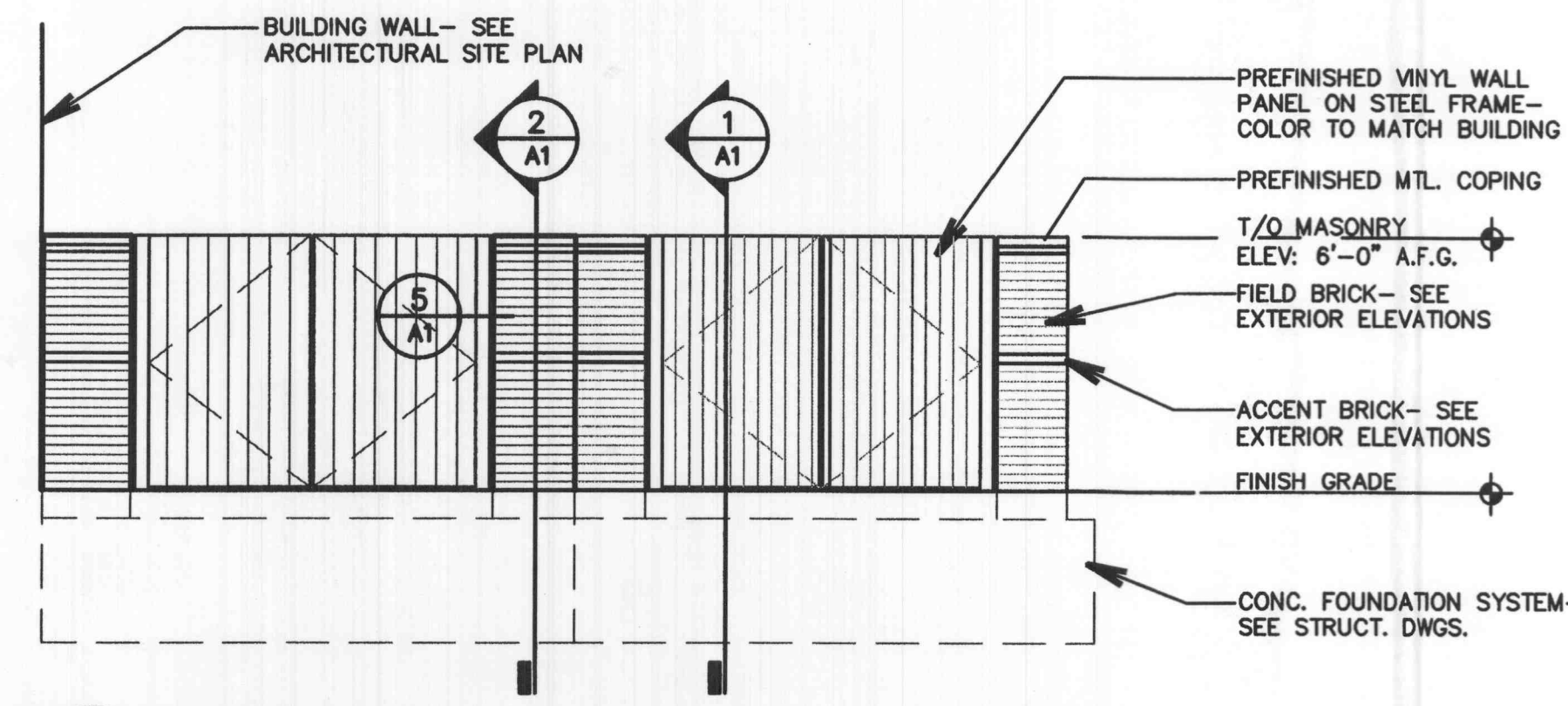


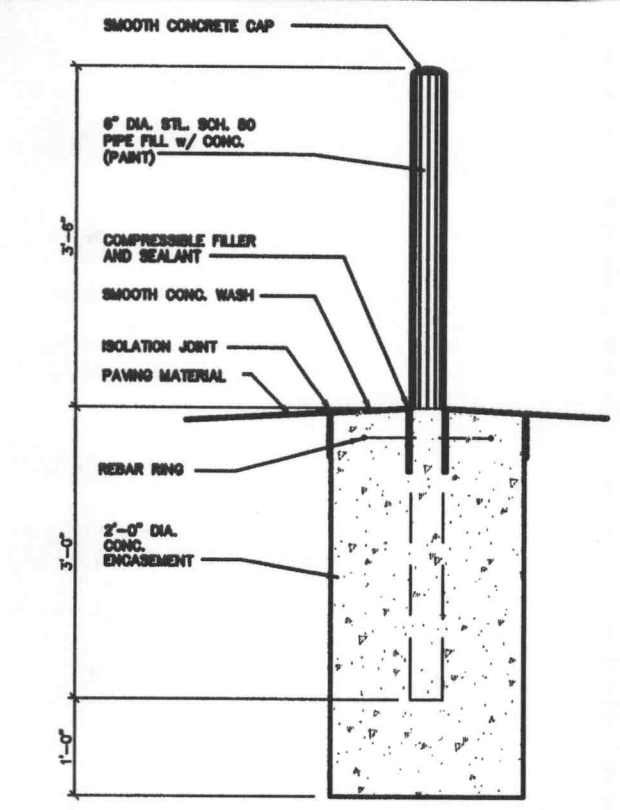
11 ELEVATION  
A1 SCALE: 1/4" = 1'-0"



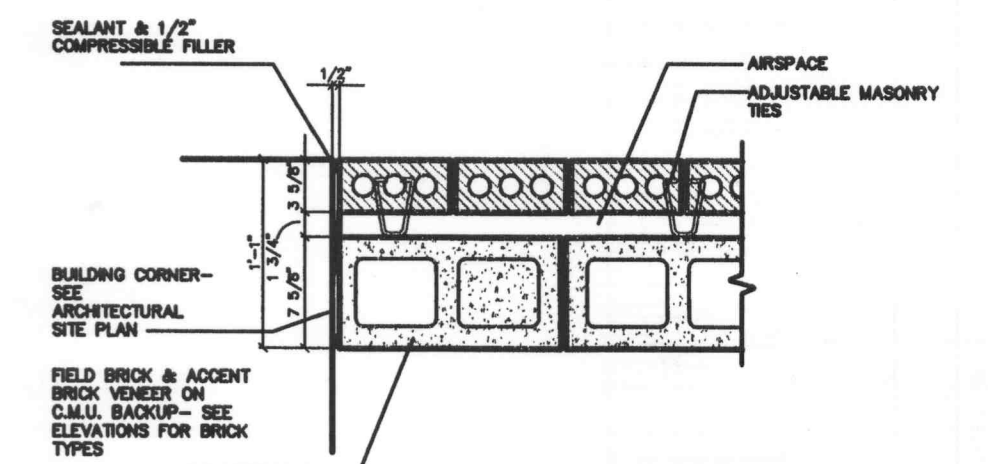
10 ELEVATION  
A1 SCALE: 1/4" = 1'-0"



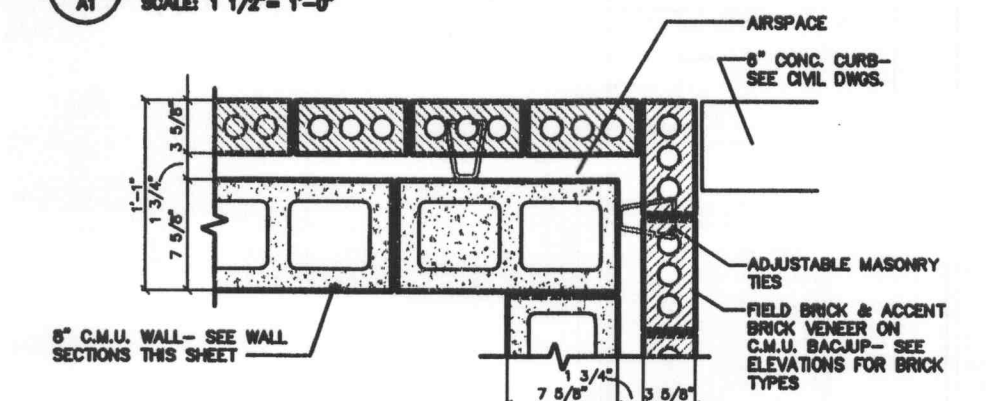
9 ELEVATION  
A1 SCALE: 1/4" = 1'-0"



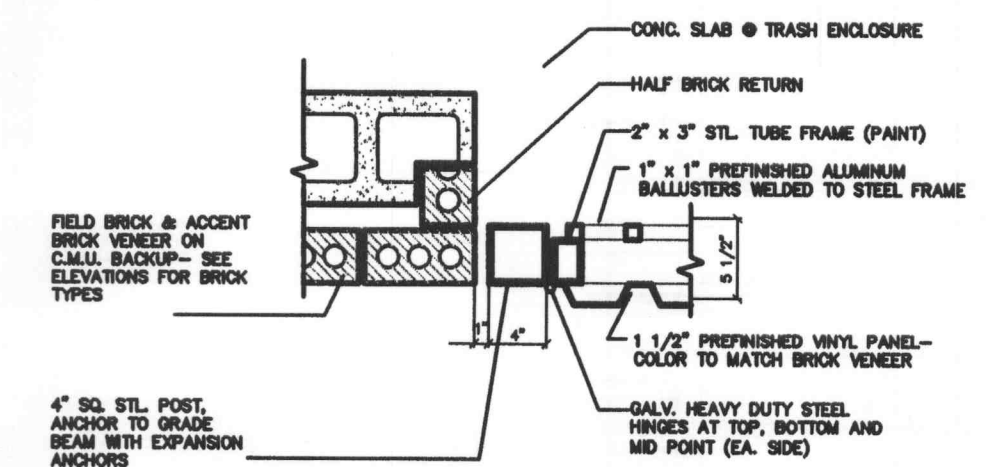
7 EXTERIOR PIPE BOLLARD  
A1 SCALE: 1/2" = 1'-0"



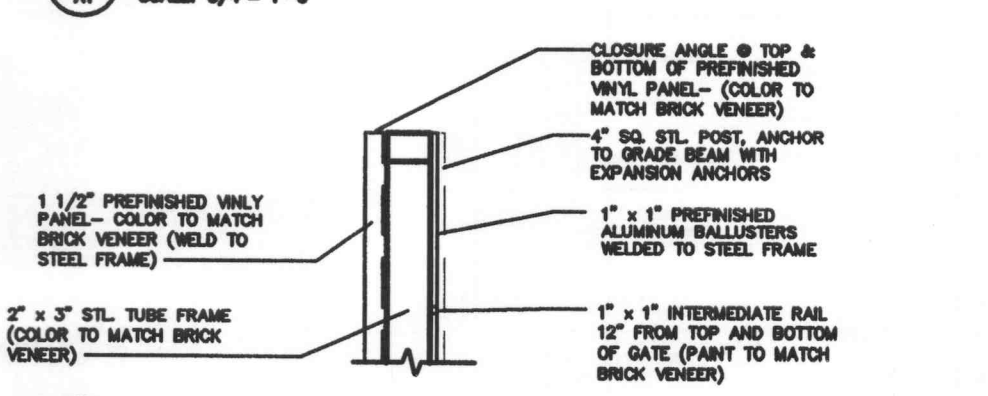
12 JAMB DETAIL @ CORNER  
A1 SCALE: 1 1/2" = 1'-0"



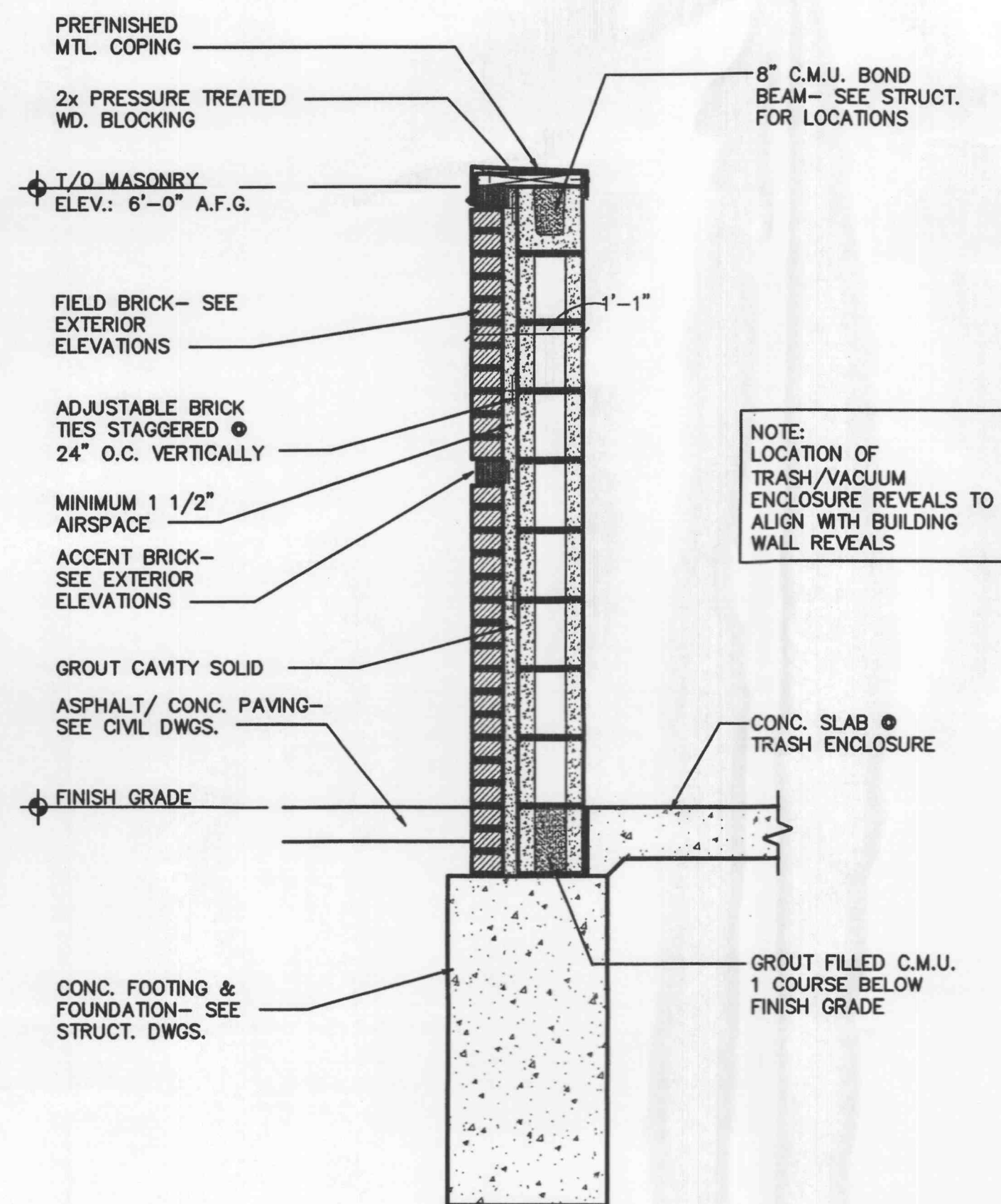
8 JAMB DETAIL @ CORNER  
A1 SCALE: 3/4" = 1'-0"



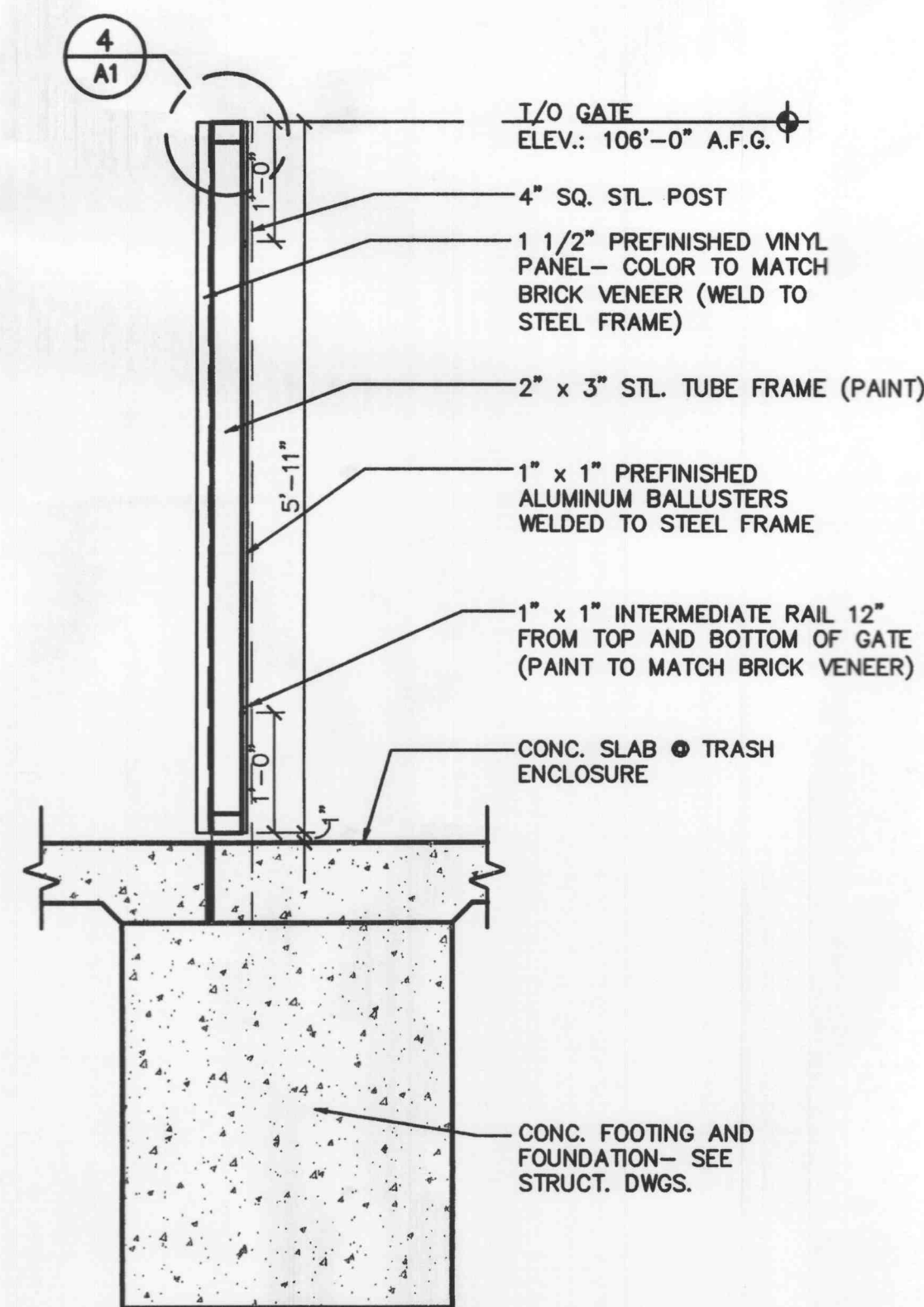
5 JAMB DETAIL @ GATE  
A1 SCALE: 3/4" = 1'-0"



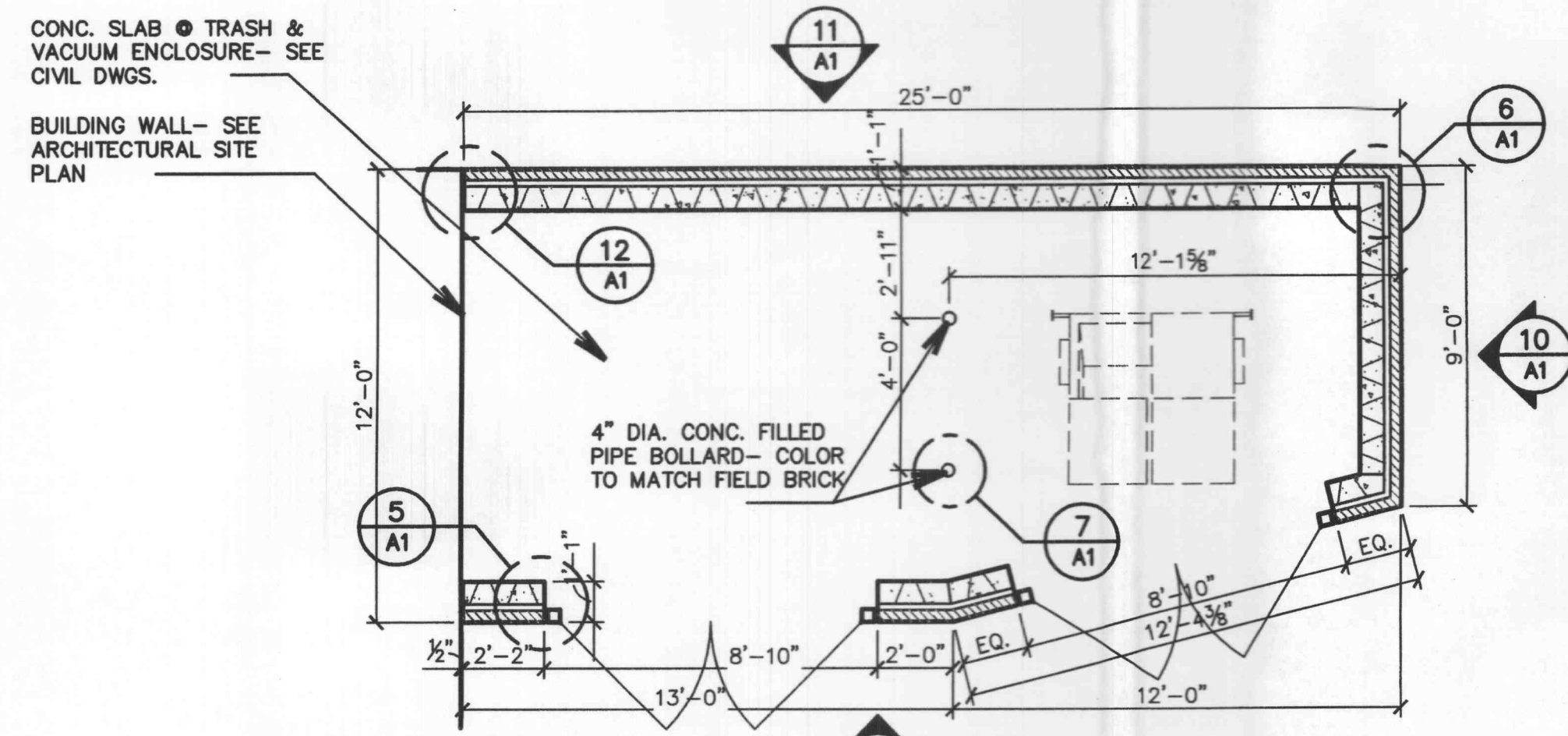
4 HEAD DETAIL @ GATE  
A1 SCALE: 3/4" = 1'-0"



2 WALL SECTION @ TRASH ENCLOSURE  
A1 SCALE: 3/4" = 1'-0"



1 WALL SECTION @ TRASH ENCLOSURE  
A1 SCALE: 3/4" = 1'-0"



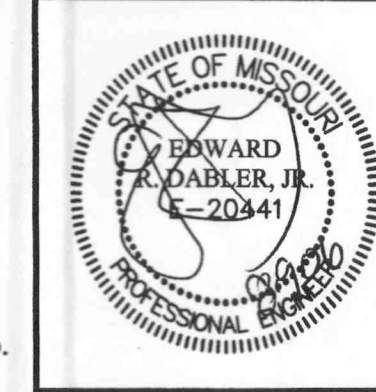
8 PLAN @ TRASH/VACUUM ENCLOSURE  
A1 SCALE: 1/4" = 1'-0"

The signed and sealed original of this drawing is on file at the offices of The Clayton Engineering Company, Inc. The signed and sealed original is the official document and shall take precedence over any digital version.

REVISIONS	

CONSTRUCTION DETAILS  
Kingsmill Crossing - Out Lot

Prepared for:  
**WATERWAY**  
GAS & WASH  
727 GODDARD AVENUE  
CHESTERFIELD, MO. 63005  
636-537-1111



the clayton engineering company, inc.  
ENGINEERS • SURVEYORS • PLANNERS  
11920 WESTLINE INDUSTRIAL DRIVE  
ST. LOUIS, MISSOURI 63146  
(314) 692-8888 FAX: (314) 692-8688  
clayton-engineering.com

Designed	ERD
Drawn	AJM
Checked	ERD
Date	4/17/06
Project Number	05048
Sheet Number	6 of 6