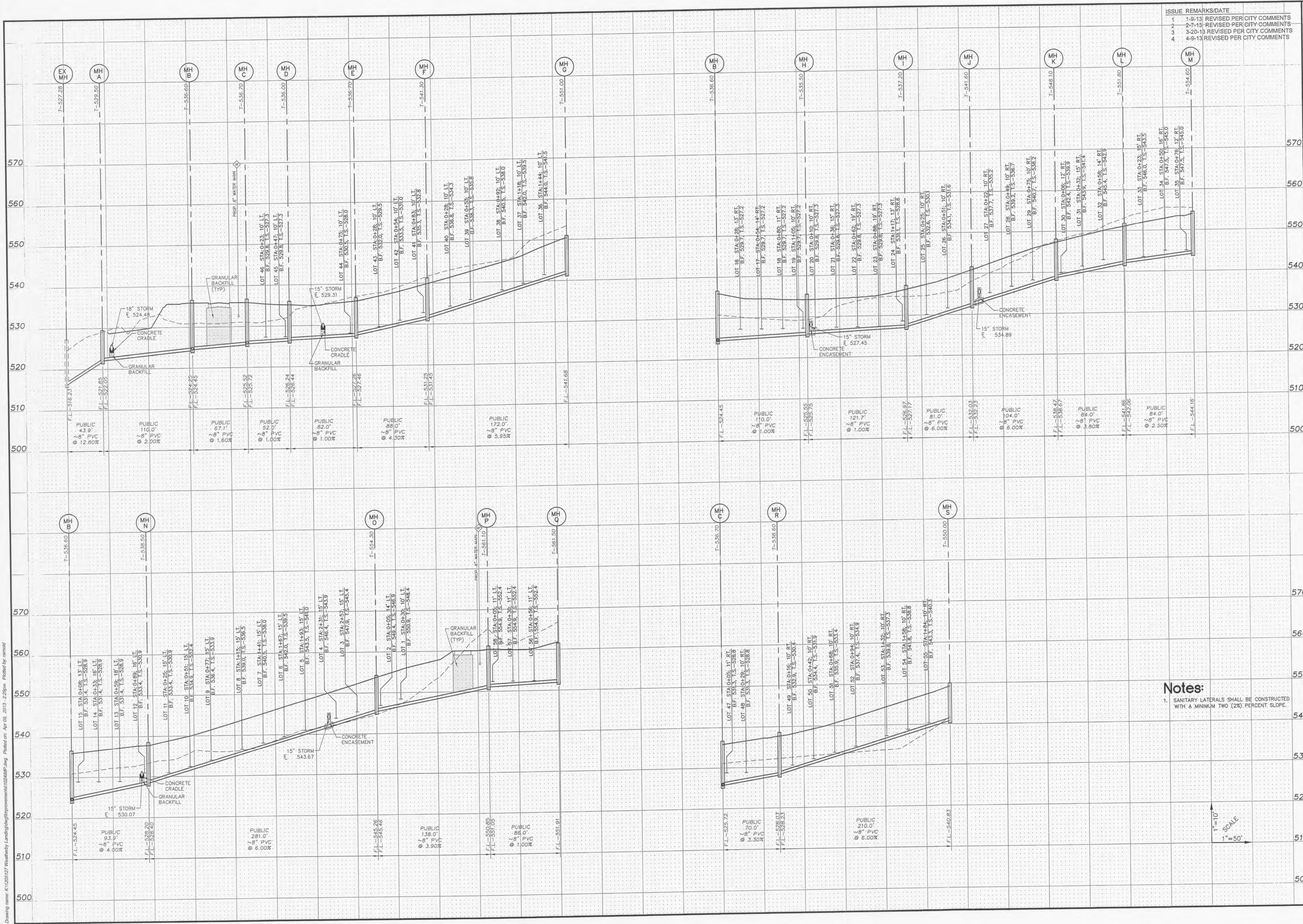


Drawing name: K:\120127\Weatherby\_Landing\dwg\Improvements\02\MFP.dwg Plotted on: Apr 09, 2013 - 2:29pm Plotted by: rarnold



ISSUE	REMARKS/DATE
1	1-9-13 REVISED PER CITY COMMENTS
2	2-7-13 REVISED PER CITY COMMENTS
3	3-20-13 REVISED PER CITY COMMENTS
4	4-9-13 REVISED PER CITY COMMENTS

PROJECT TITLE  
**WEATHERBY LANDING**  
OTFALLON, MISSOURI

THE **STERLING** CO.  
ENGINEERS & SURVEYORS  
5055 New Baumgartner Road  
St. Louis, Missouri 63129  
Ph 314-487-0440 Fax 314-487-8944  
www.sterling-eng-sur.com  
Corporate Certificate of Authority #001348

The Professional Engineer's seal and signature placed in this sheet apply only to the material and items shown on the sheet. Any modifications, omissions or other documents not exhibiting this seal and signature shall not be considered approved by this engineer, and the engineer hereby disclaims any and all responsibility for the same. No work shall be undertaken without this seal and signature.

Date: 4/9/2013  
RODNEY ARNOLD  
License No. PE-2002016612  
Civil Engineer

MCBRIDE & SON HOMES LAND DEVELOPMENT, INC.  
16091 SWINGLEY RIDGE ROAD, STE. 300  
CHESTERFIELD, MISSOURI 63017  
Ph. 636-537-2000  
www.mcbriدهomes.com

P+Z No. 1305.05  
City No.  
Date: 11/12/2012  
Job No. 12-05-127  
Page No.  
**7.1**  
IMP

Notes:  
1. SANITARY LATERALS SHALL BE CONSTRUCTED WITH A MINIMUM TWO (2%) PERCENT SLOPE.

T=10'  
1" SCALE  
1"=50'