

ISSUE	REMARKS/DATE
1	1-9-13 REVISED PER CITY COMMENTS
2	2-7-13 REVISED PER CITY COMMENTS
3	3-20-13 REVISED PER CITY COMMENTS
4	4-9-13 REVISED PER CITY COMMENTS

PROJECT TITLE

WEATHERBY LANDING
OF FALLON, MISSOURI

THE STERLING CO.
ENGINEERS & SURVEYORS
5055 New Baumgartner Road
St. Louis, Missouri 63129
Ph. 314-487-0440 Fax. 314-487-8844
www.sterling-eng-survey.com
Corporate Certificate of Authority #001348

The Professional Engineer's seal and signature are required on this sheet. All drawings, instruments or other documents not exhibiting this seal and signature shall not be considered prepared by this engineer, and the engineer expressly disclaims any and all responsibility for such drawings, instruments or documents not exhibiting this seal and signature.



Date: 4/9/2013
RODNEY ARNOLD
License No. PE-2002016612
Civil Engineer

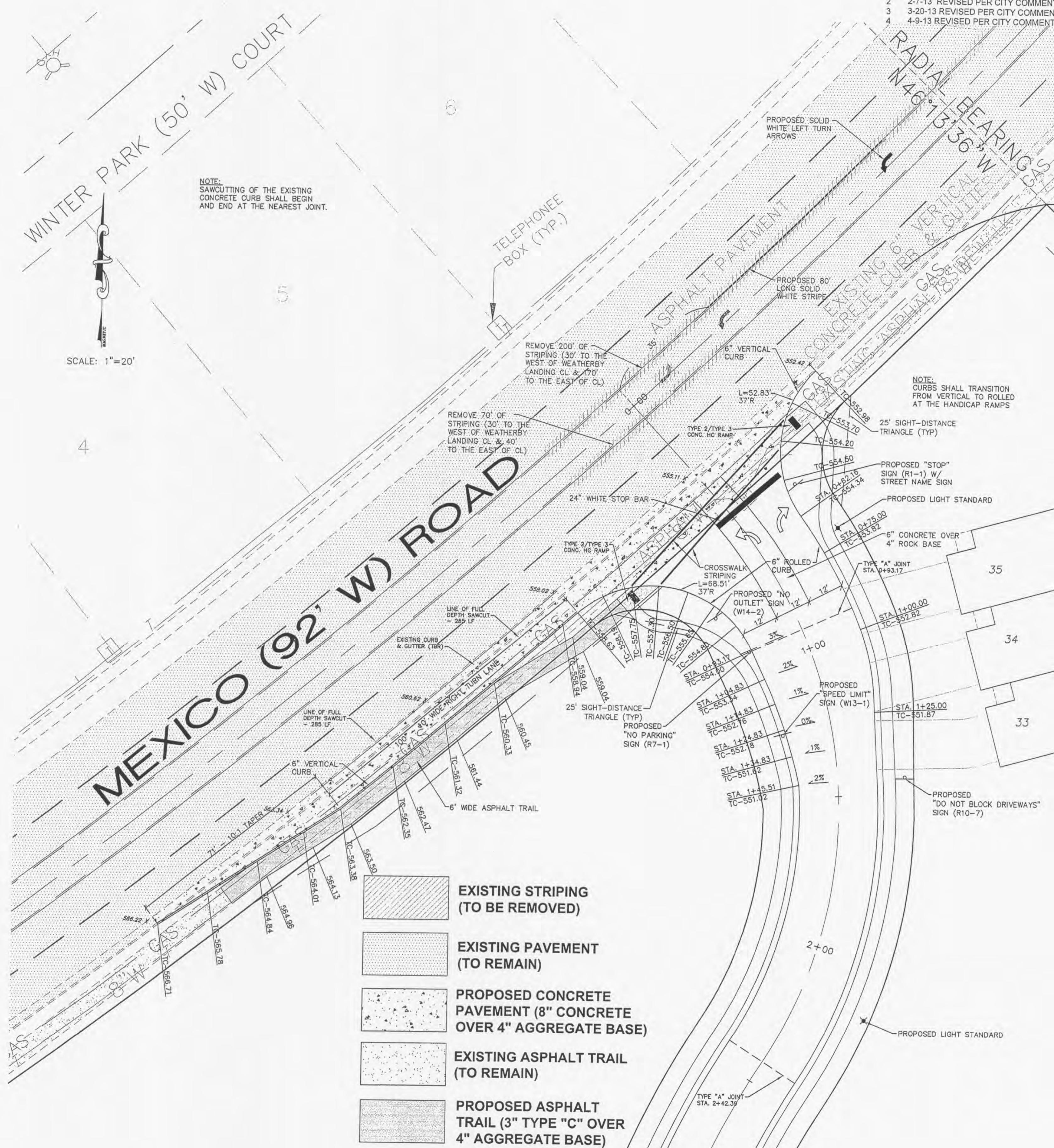
MCBRIDE & SON HOMES LAND DEVELOPMENT, INC.
16091 SWINGLEY RIDGE ROAD, STE. 300
CHESTERFIELD, MISSOURI 63017
Ph. 636-537-2000
www.mcbridehomes.com

ENTRANCE DETAIL / WARPINGS

P+Z No. 1305.05
City No.
Date: 11/12/2012
Job No. 12-05-127
Page No.

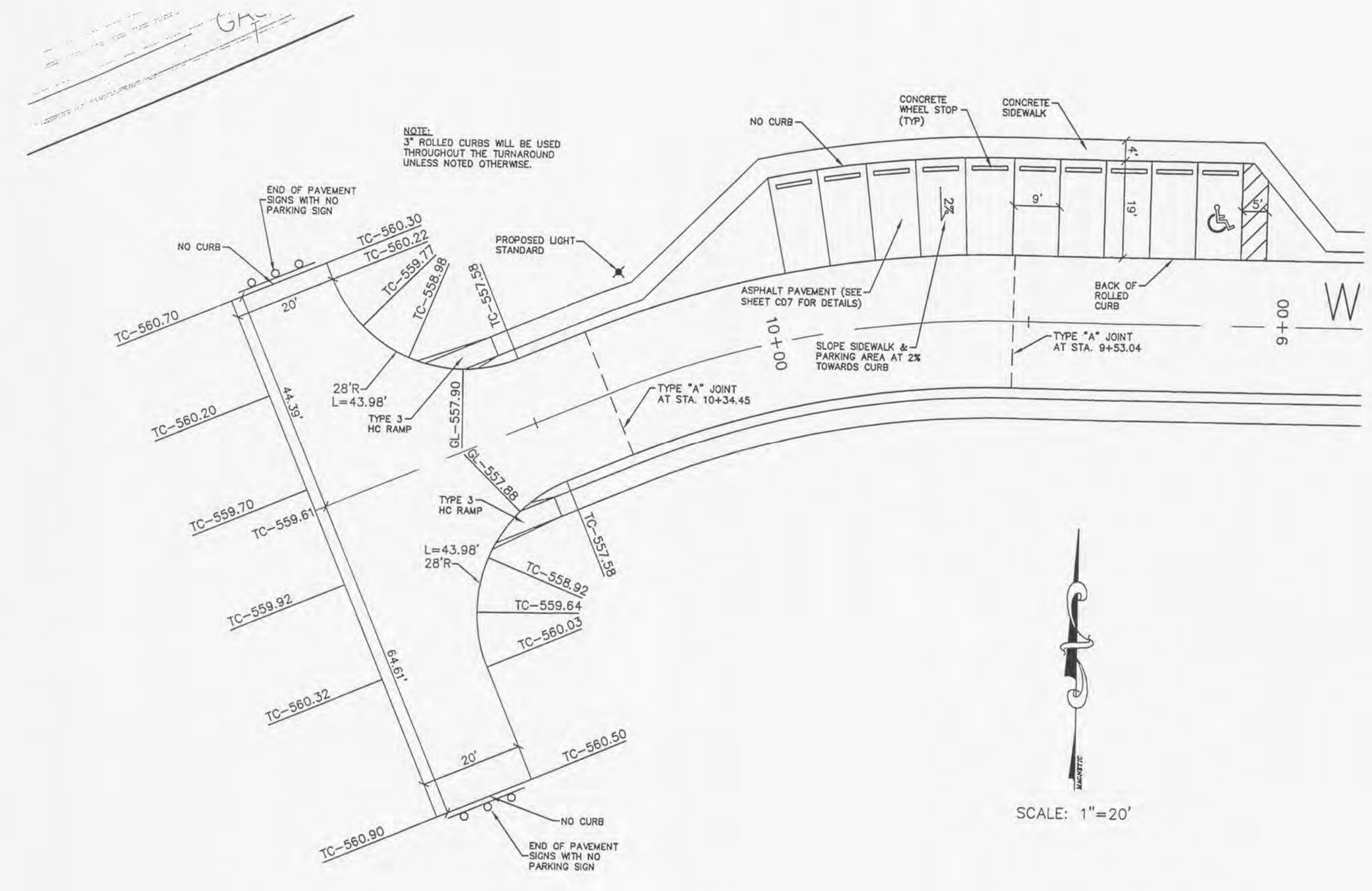
12.1

IMP

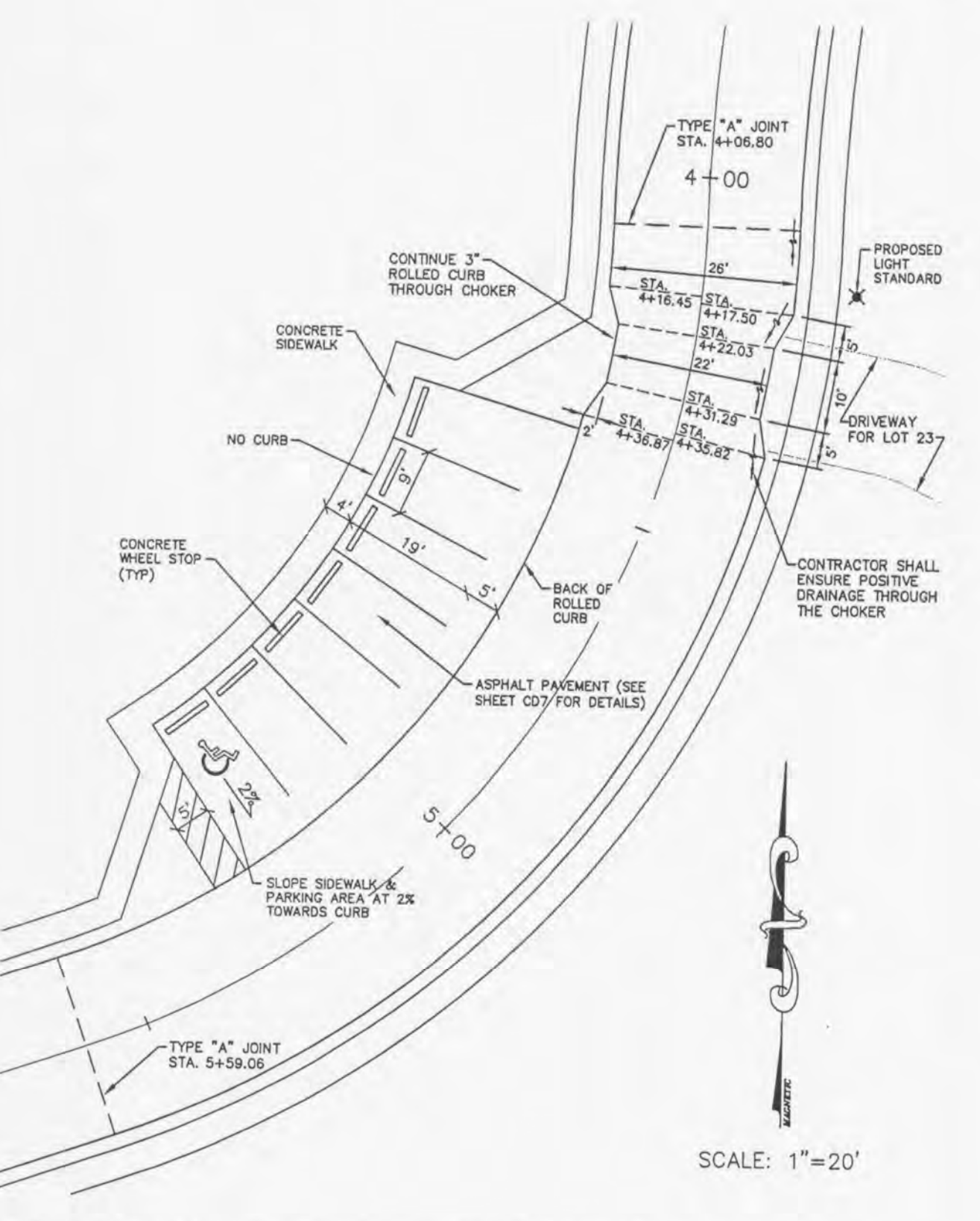


- EXISTING STRIPING (TO BE REMOVED)
- EXISTING PAVEMENT (TO REMAIN)
- PROPOSED CONCRETE PAVEMENT (8" CONCRETE OVER 4" AGGREGATE BASE)
- EXISTING ASPHALT TRAIL (TO REMAIN)
- PROPOSED ASPHALT TRAIL (3" TYPE "C" OVER 4" AGGREGATE BASE)

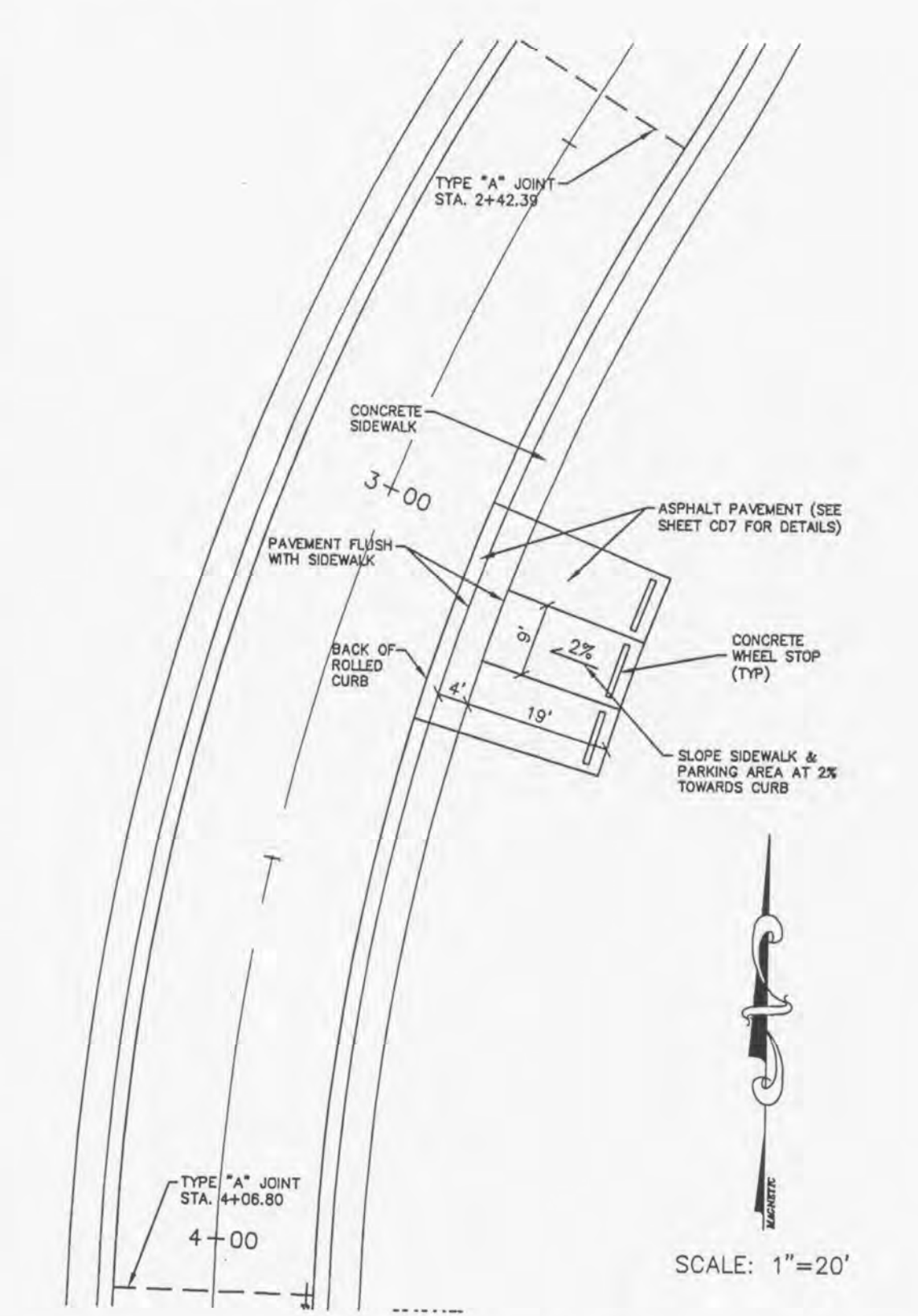
WEATHERBY LANDING DRIVE AT MEXICO ROAD INTERSECTION



WEATHERBY LANDING DRIVE GUEST PARKING & "T" TURNAROUND WARPING DETAIL



WEATHERBY LANDING DRIVE GUEST PARKING & CHOKER DETAIL STATION 4+00 THRU 5+50



WEATHERBY LANDING DRIVE GUEST PARKING DETAIL @ STATION 3+00

- NOTES:
- ALL DIMENSIONS ARE TO BACK OF CURB UNLESS NOTED OTHERWISE.
 - ELEVATIONS ARE SHOWN TO TOP OF CURB (TC) AT THE BACK OF CURB UNLESS NOTED OTHERWISE.
 - "GL" DENOTES ELEVATIONS AT THE GUTTERLINE.

Drawing name: K11202127 Weatherby Landing\dwg\improvements\1212\MAP.dwg Printed on: Apr 09, 2013 2:25pm Plotted by: ammb