

ISSUE	REMARKS/DATE
1	1-9-13 REVISED PER CITY COMMENTS
2	2-7-13 REVISED PER CITY COMMENTS
3	3-20-13 REVISED PER CITY COMMENTS
4	4-9-13 REVISED PER CITY COMMENTS

PROJECT TITLE

WEATHERBY LANDING
OF FALLON, MISSOURI

THE STERLING CO.
ENGINEERS & SURVEYORS
6055 New Baumgartner Road
St. Louis, Missouri 63129
Ph 314-487-0440 Fax 314-487-8944
www.sterling-eng-sur.com
Corporate Certificate of Authority #001348

The Professional Engineer's seal and signature shall be placed on this sheet and on all other sheets of this project. All drawings, instruments or other documents not exhibiting the seal and signature shall not be considered prepared by this engineer, and the engineer expressly disclaims any and all responsibility for such drawings, instruments or documents not exhibiting his seal and signature.



Date: 4/9/2013
RODNEY ARNOLD
License No. PE-2002016612
Civil Engineer

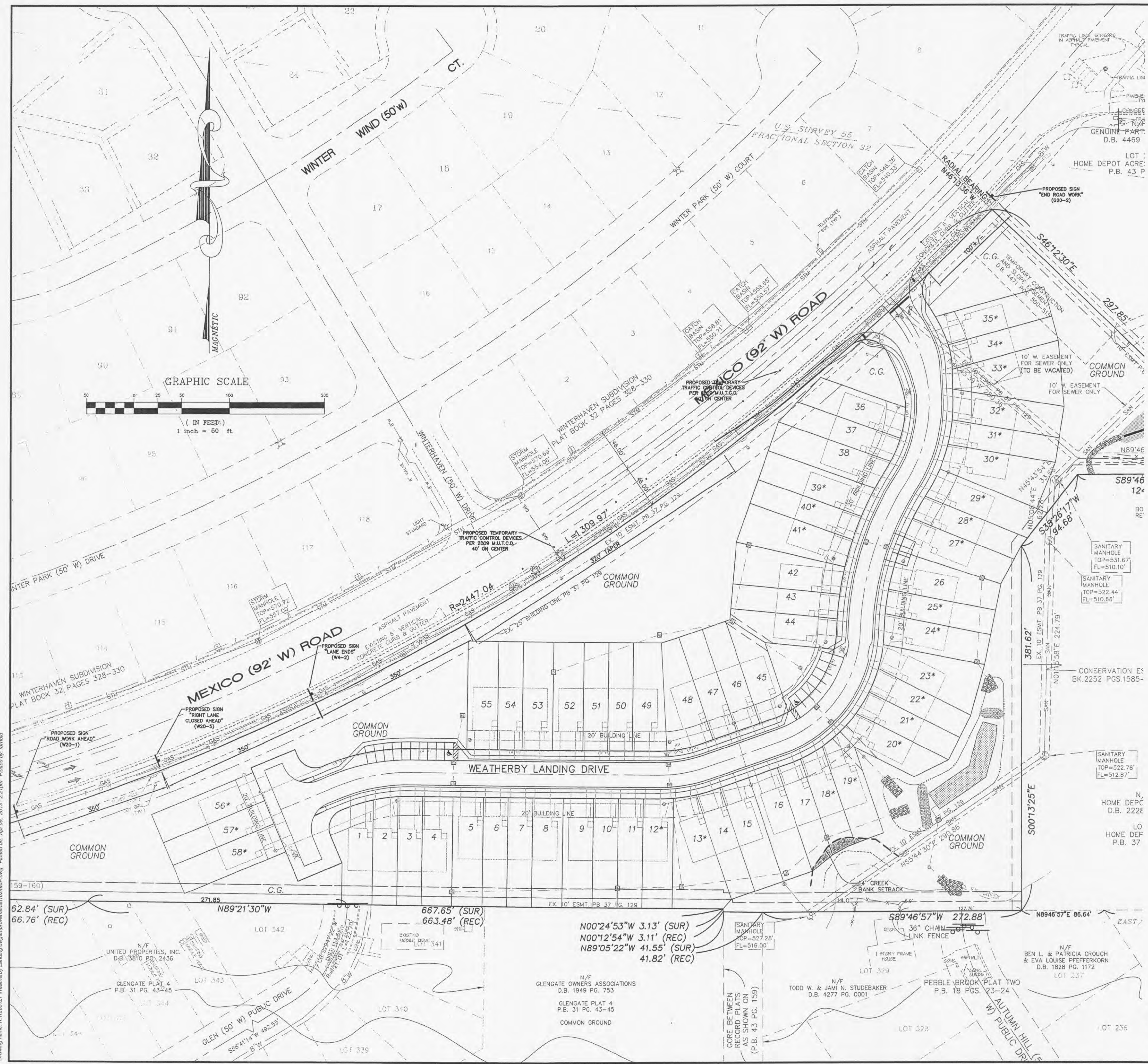
MCBRIDE & SON HOMES LAND DEVELOPMENT, INC.
16091 SWINGLEY RIDGE ROAD, STE. 300
CHESTERFIELD, MISSOURI 63017
Ph. 636-637-2000
www.mcbriدهomes.com

INTERIM TRAFFIC CONTROL PLAN

P+Z No. 1305.05
City No.
Date: 11/12/2012
Job No. 12-05-127
Page No.

14.1

IMP



Interim Construction Traffic Control
ALL TRAFFIC CONTROL AND DEVICES SHALL BE PER THE 2009 EDITION OF THE MANUAL FOR UNIFORM TRAFFIC CONTROL DEVICES FOR STREETS AND HIGHWAYS.

Drawing name: K11205127 Weatherby Landing\Drawings\1205127MAP.dwg, Plotted on: Apr 09, 2013 - 2:21pm, Plotted by: amold