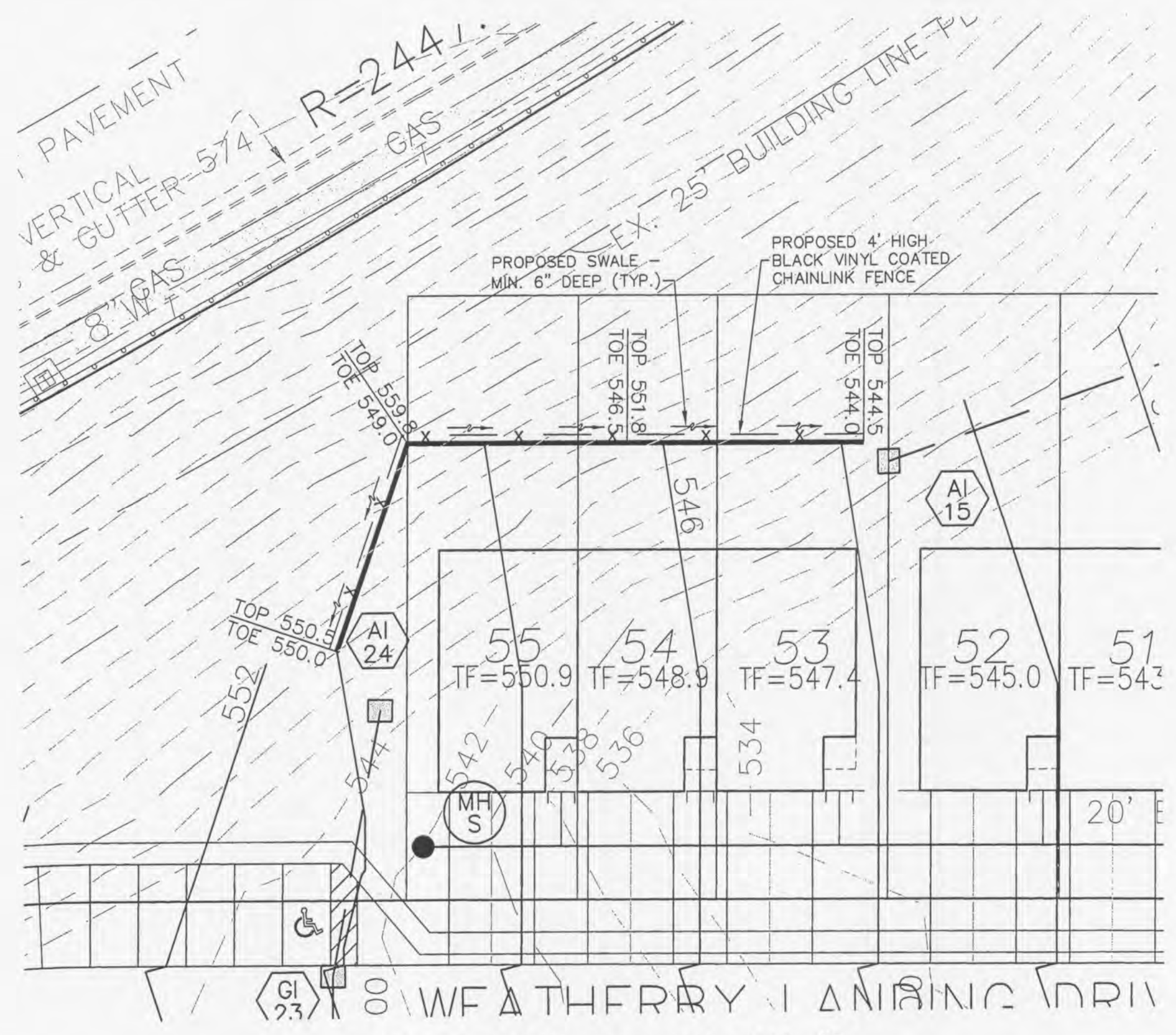


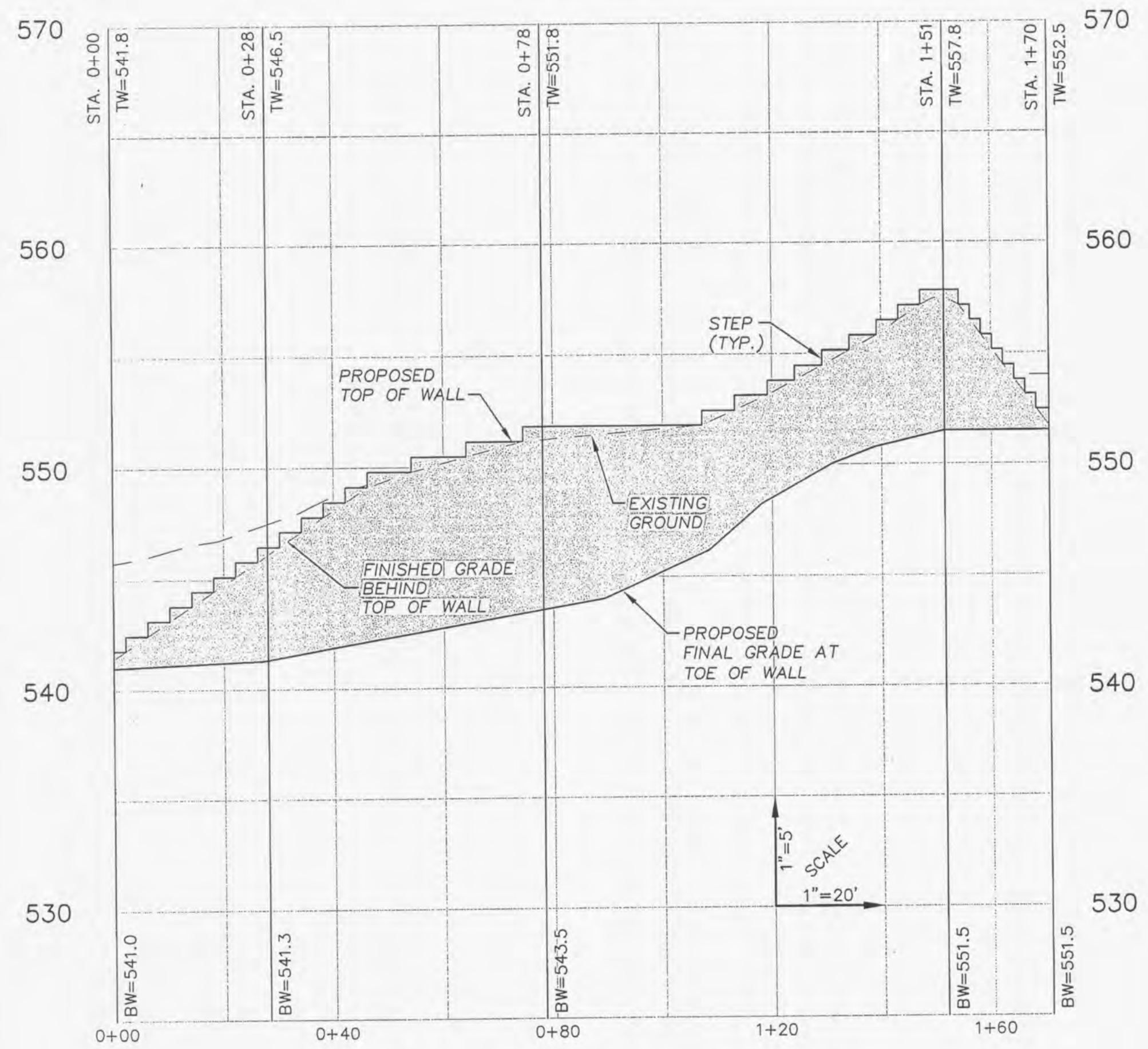
ISSUE	REMARKS/DATE
1	1-9-13 REVISED PER CITY COMMENTS
2	2-7-13 REVISED PER CITY COMMENTS
3	3-20-13 REVISED PER CITY COMMENTS
4	4-9-13 REVISED PER CITY COMMENTS



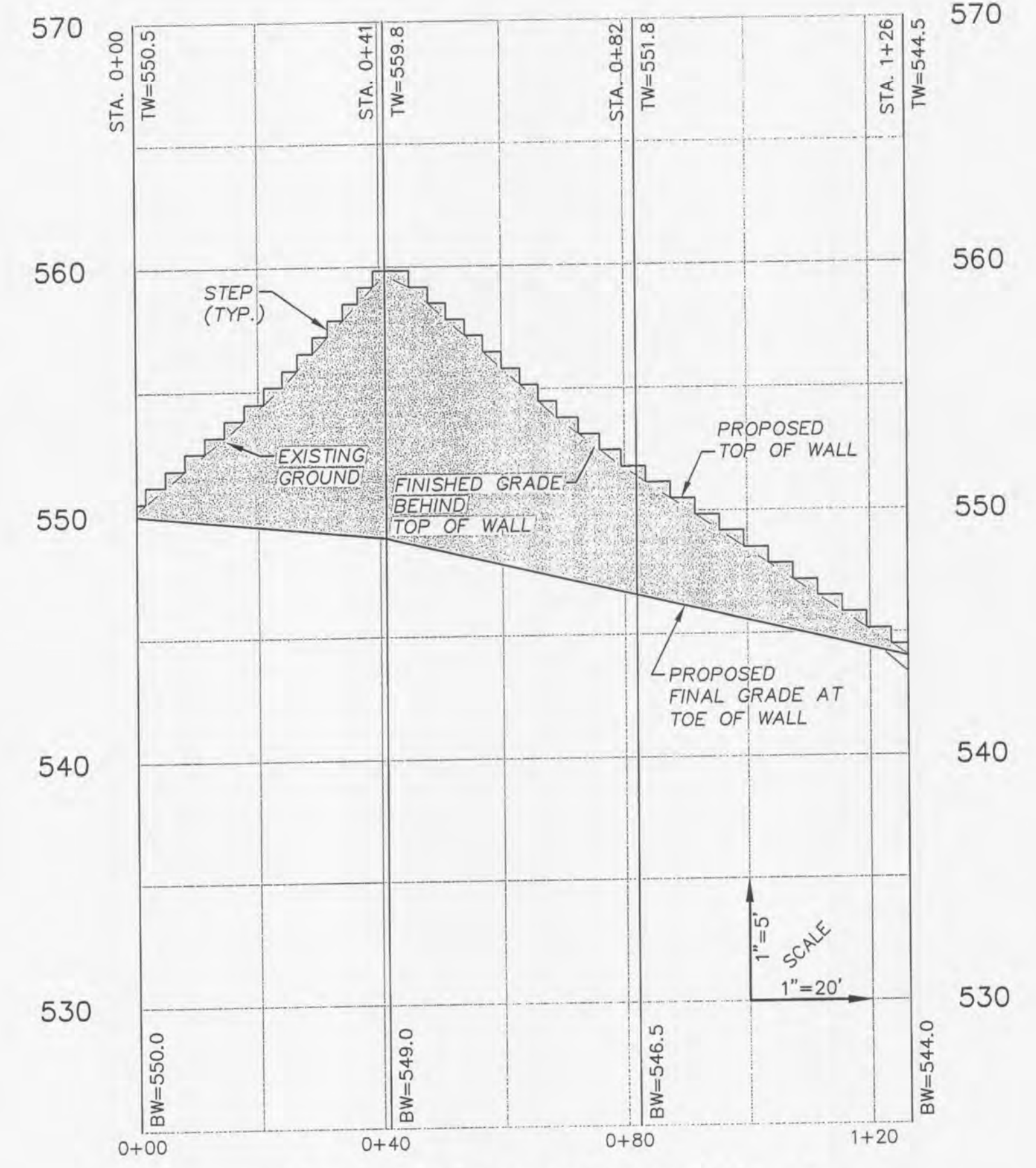
MODULAR BLOCK RETAINING WALL #1
PLAN VIEW



MODULAR BLOCK RETAINING WALL #2
PLAN VIEW



MODULAR BLOCK RETAINING WALL #1
PROFILE VIEW
HORIZONTAL SCALE: 1"=20'
VERTICAL SCALE: 1"=5'



MODULAR BLOCK RETAINING WALL #2
PROFILE VIEW
HORIZONTAL SCALE: 1"=20'
VERTICAL SCALE: 1"=5'

RETAINING WALL NOTE:
RETAINING WALLS SHOWN HEREON ARE FOR REFERENCE ONLY. FOR CONSTRUCTION DETAILS AND SPECIFICATIONS SEE RETAINING WALL STRUCTURAL DESIGN PREPARED BY BRUCKER ENGINEERING COMPANY ON SHEETS 15.2 & 15.3.

PROJECT TITLE

WEATHERBY LANDING
OF FALLON, MISSOURI

THE STERLING CO.
ENGINEERS & SURVEYORS
5055 New Baumgartner Road
St. Louis, Missouri 63129
Ph: 314-487-0440 Fax: 314-487-8944
www.sterling-eng-sur.com
Corporate Certificate of Authority #001348

The Professional Engineer's seal and signature affixed to this sheet apply only to the material and items shown on this sheet. All drawings, measurements or other data not so certified are void. This seal and signature shall not be considered valid unless the engineer and the engineer properly disclaim any and all responsibility for such items, drawings or documents not exhibiting this seal and signature.



Date: 4/9/2013
RODNEY ARNOLD
License No. PE-2002016612
Civil Engineer

MCBRIDE & SON HOMES LAND DEVELOPMENT, INC.
16091 SWINGLEY RIDGE ROAD, STE. 300
CHESTERFIELD, MISSOURI 63017
Ph: 636-537-2000
www.mcbriedehomes.com

RETAINING WALL PLAN & PROFILE

P+Z No. 1305.05
City No.
Date: 11/12/2012
Job No. 12-05-127

Page No.

15.1

IMP

Drawing name: K:\1205127\Weatherby_Landing\Drawings\Improvements\1024\MP.dwg Plotted on: Apr 09, 2013 - 2:20pm Plotted by: rarnold