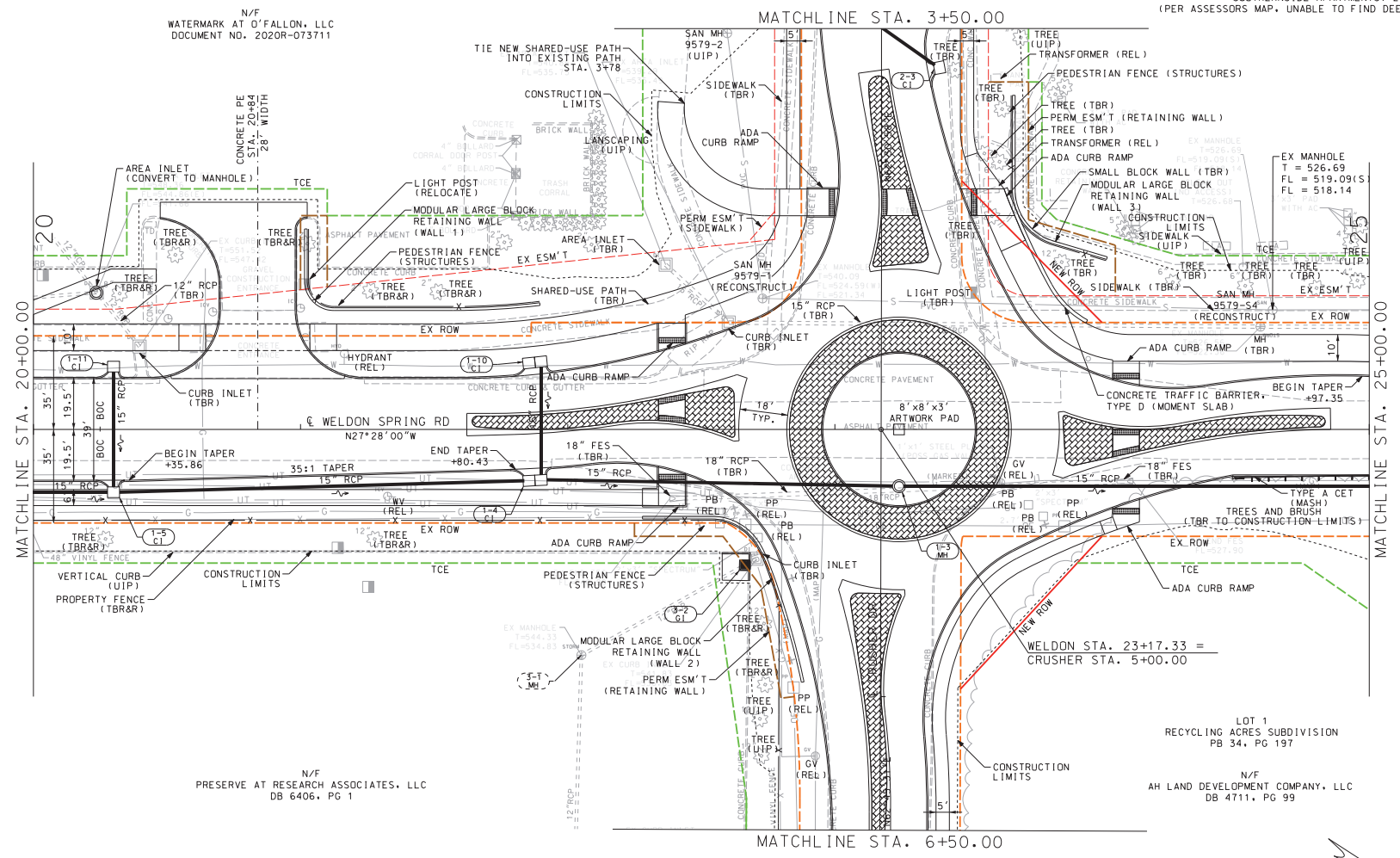


LOT 2
WATERMARK SUBDIVISION
2020R-082073

N/F
WATERMARK AT O'FALLON, LLC
DOCUMENT NO. 2020R-073711

N/F
SOUTHERNSIDE APARTMENTS, LP
(PER ASSESSORS MAP, UNABLE TO FIND DEED OF RECORD)

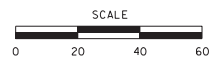


N/F
PRESERVE AT RESEARCH ASSOCIATES, LLC
DB 6406, PG 1

LOT 1
RECYCLING ACRES SUBDIVISION
PB 34, PG 197

N/F
AH LAND DEVELOPMENT COMPANY, LLC
DB 4711, PG 99

- NOTE:
- SEE RETAINING WALL SHEETS FOR DETAILS OF WALLS 1 THROUGH 3.
 - ALL STATIONING HAS BEEN MEASURED FROM THE WELDON SPRING RD ϵ UNLESS OTHERWISE NOTED.



DATE PREPARED	9/18/2024
DISTRICT	SI
STATE	MO
SHEET NO.	7
ROUTE	WELDON SPRING
DA JOB NO.	221150
EW GATEWAY ID.	7209-22
PROJECT NO.	CMAO-7302(691)
BRIDGE NO.	N/A

DATE	DESCRIPTION

OATES
 ENGINEER
 LICENSE NO. 00276
 MISSOURI REGISTERED PROFESSIONAL ENGINEER
 LICENSE NO. 00276

CITY OF O'FALLON
 ENGINEER
 100 NORTH MAIN STREET
 O'FALLON, MO 63366
 TEL: 636-219-5596

PLAN SHEET
 WELDON SPRING ROAD
 SHEET 3 OF 6