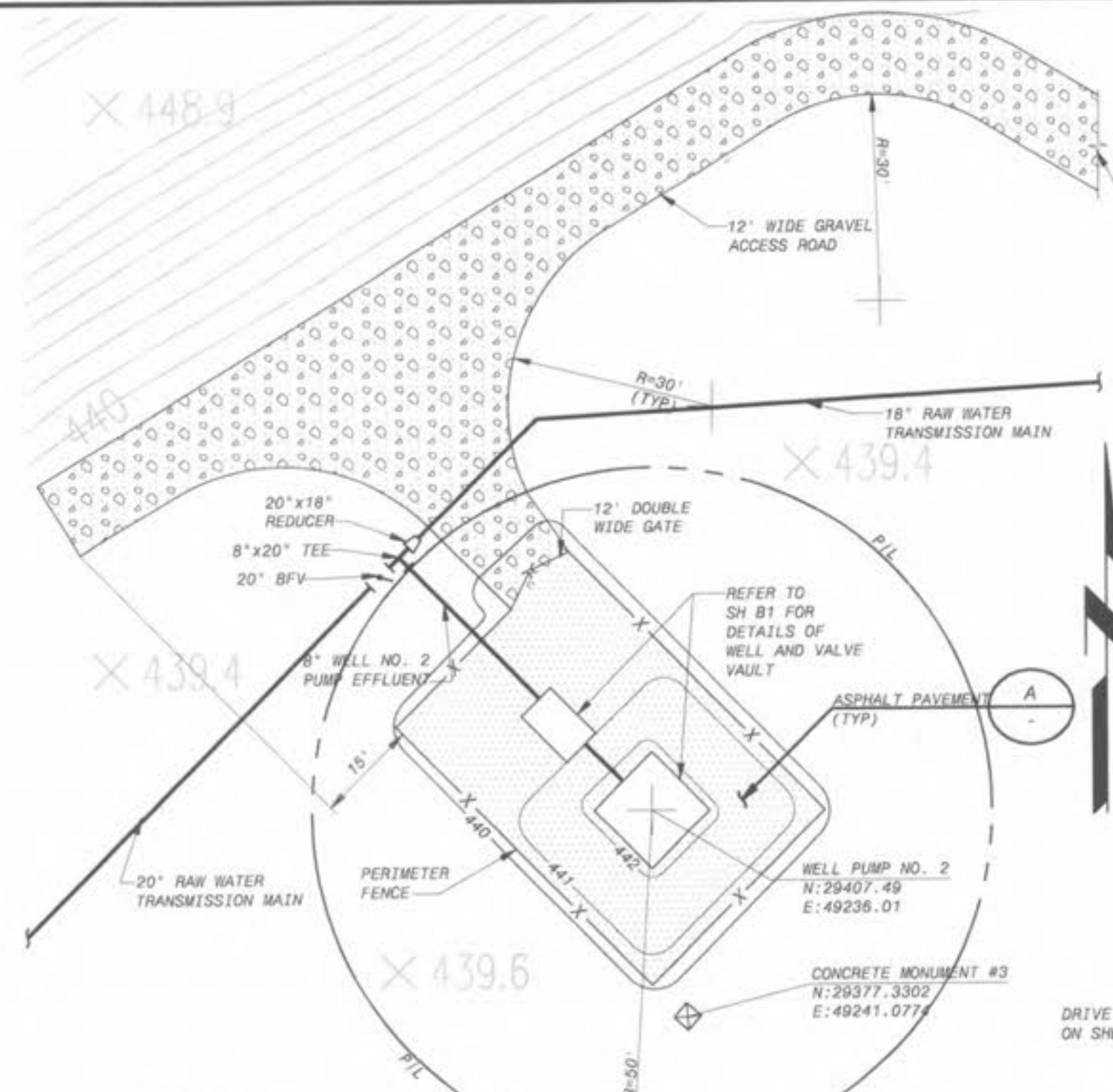
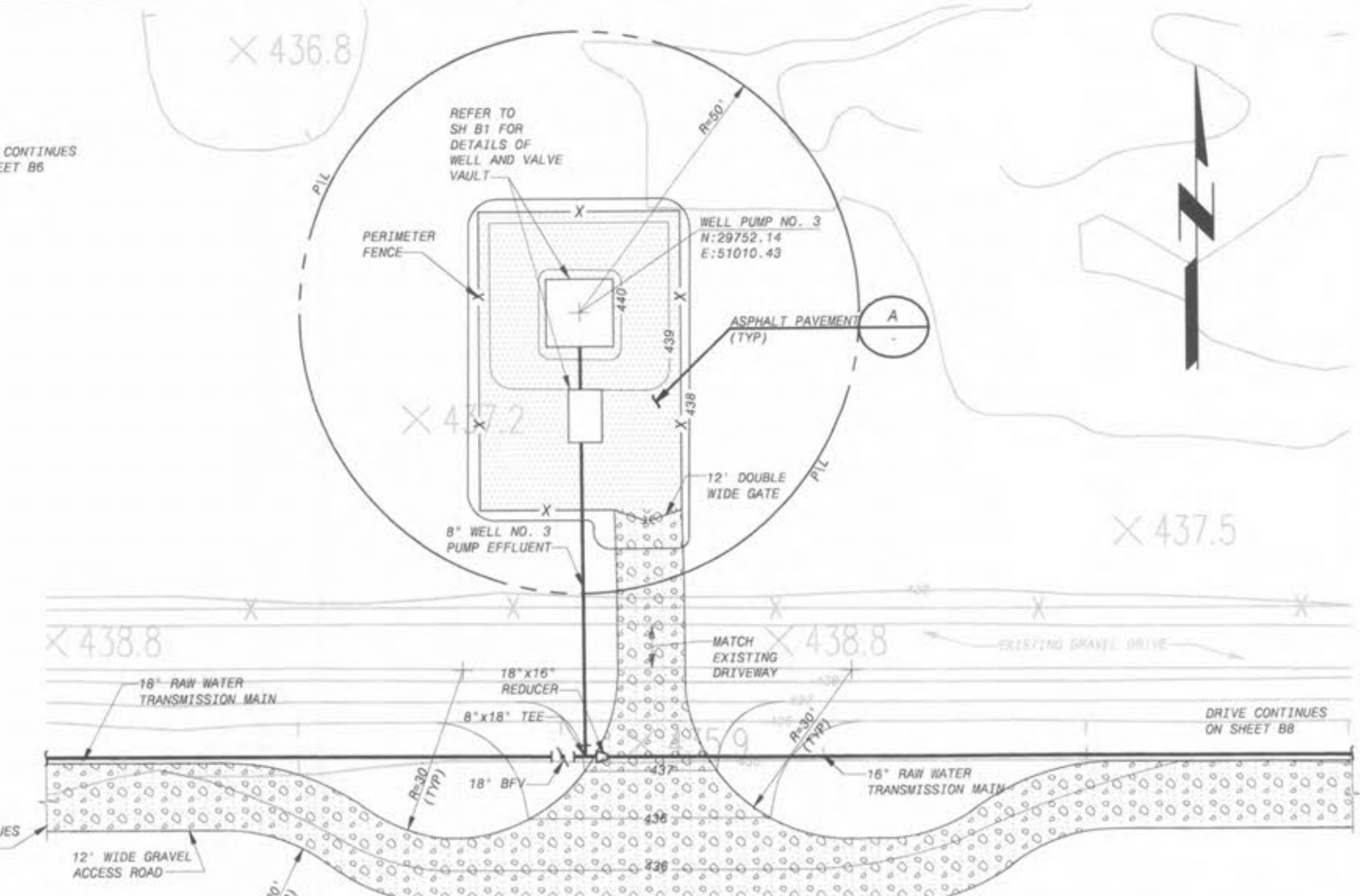


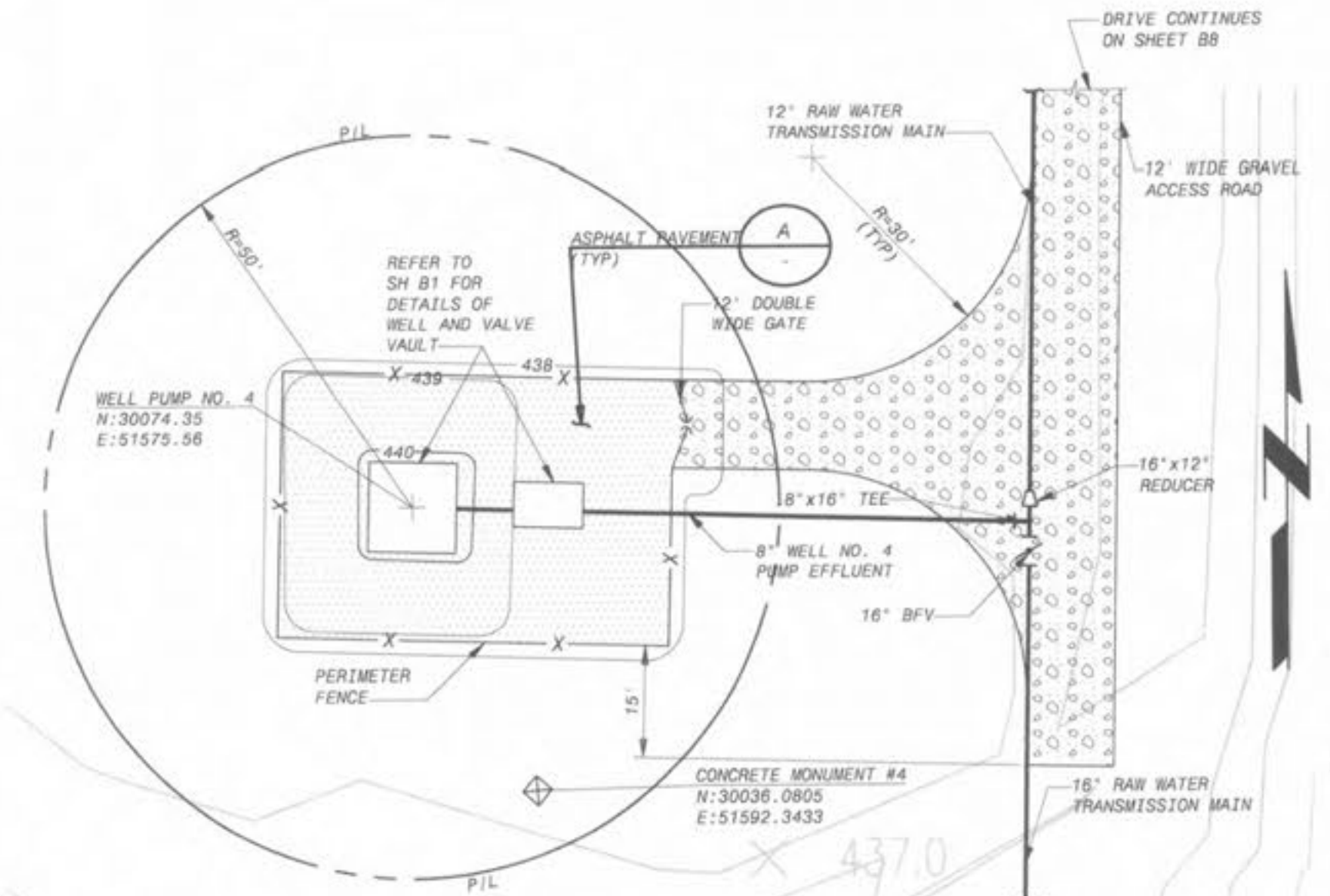
WELL AREA NO. 1
1" = 20'-0"



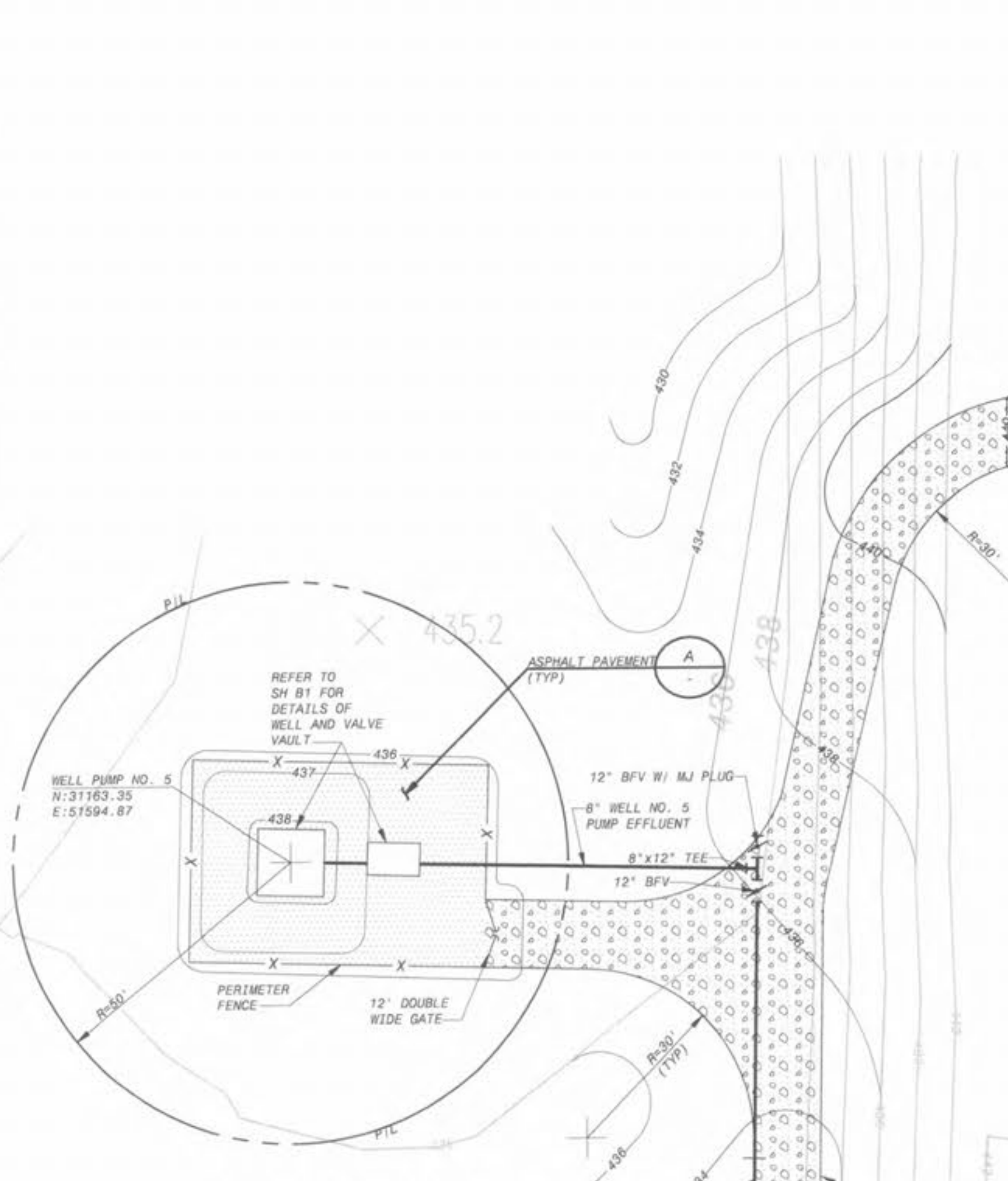
WELL AREA NO. 2
1" = 20'-0"



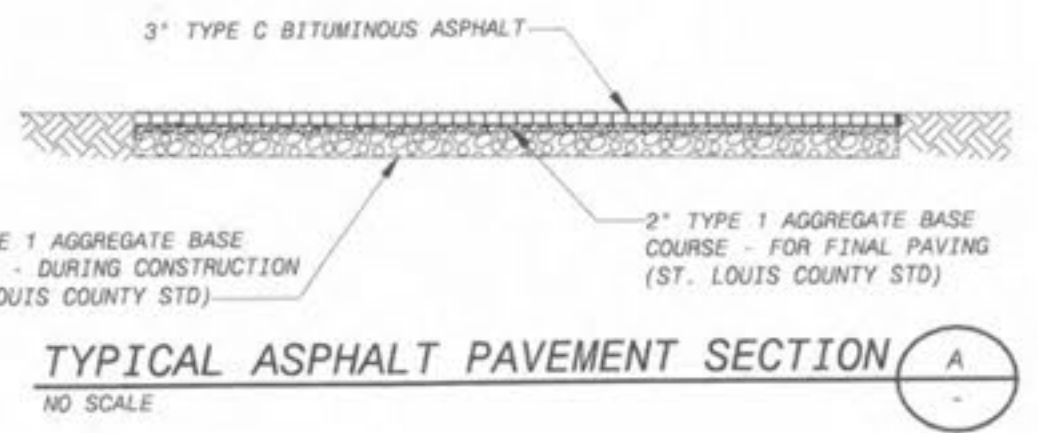
WELL AREA NO. 3
1" = 20'-0"



WELL AREA NO. 4
1" = 20'-0"



WELL AREA NO. 5
1" = 20'-0"



TYPICAL ASPHALT PAVEMENT SECTION (A)
NO SCALE

- NOTES:**
1. REMOVE TREES REQUIRED FOR CONSTRUCTION OF WELL SITE AS DETERMINED BY ENGINEER.
 2. EXACT LOCATION OF EACH WELL TO BE DETERMINED IN FIELD BY ENGINEER.
 3. ALL BURIED 8" PIPE SHALL BE RETAINED JOINT.
 4. EXISTING GROUND DRIVES TO BE REPLACED WITH MINIMUM 6" THICK COMPACTED GRANULAR MATERIAL.

DATE	REVISIONS AND RECORD OF ISSUE	NO.	BY	CHK	APP
DATE	REVISIONS AND RECORD OF ISSUE	NO.	BY	CHK	APP
DATE	REVISIONS AND RECORD OF ISSUE	NO.	BY	CHK	APP
DATE	REVISIONS AND RECORD OF ISSUE	NO.	BY	CHK	APP



BLACK & VEATCH
Corporation
St. Louis, Missouri

CITY OF O'FALLON, MISSOURI
WELL FIELD AND RAW WATER
TRANSMISSION MAIN
WELL LOCATIONS
ENLARGED SITES

DESIGNED: BPF
DETAILED: DPH, JAB
CHECKED: RFS
APPROVED: KMN
DATE: 3-7-02

PROJECT NO.
97515

B2

SHEET
3 OF 15