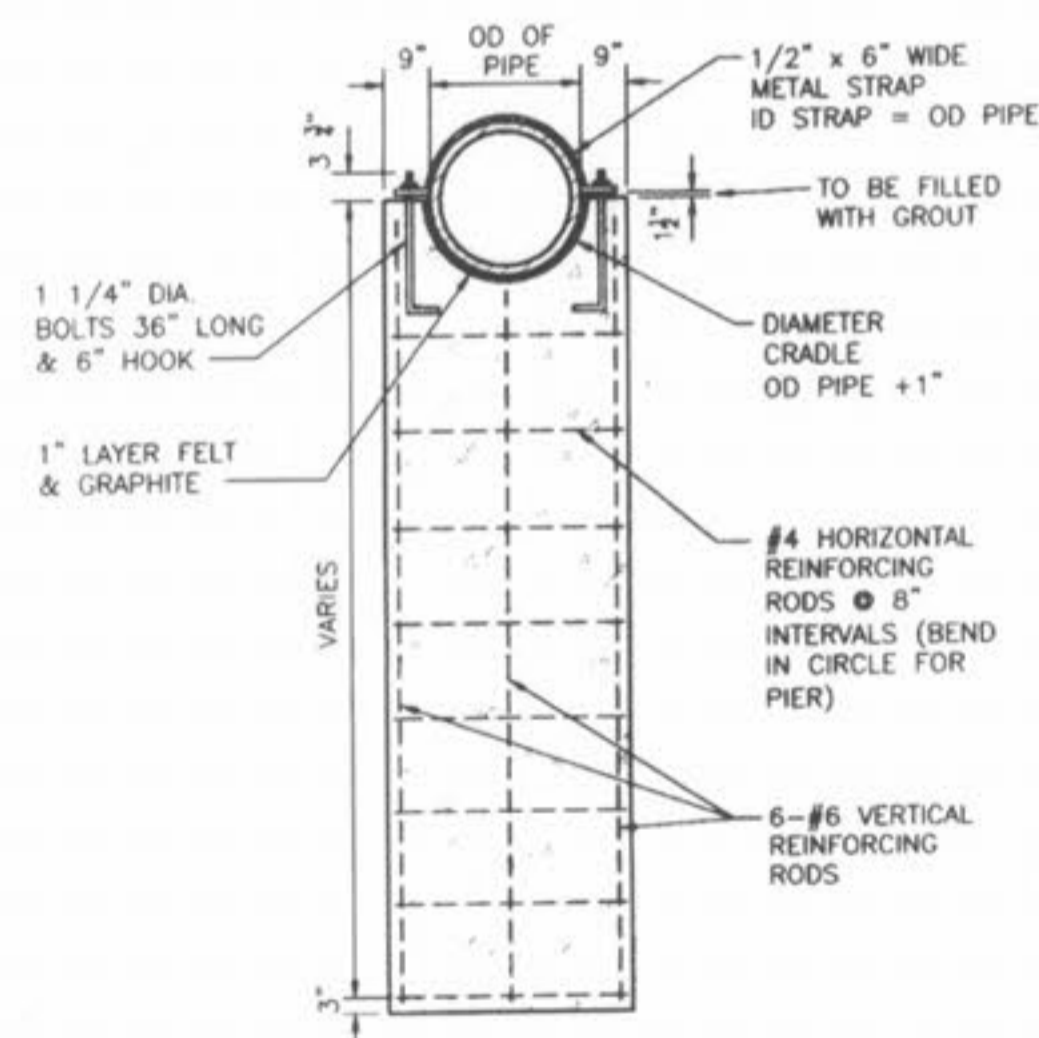


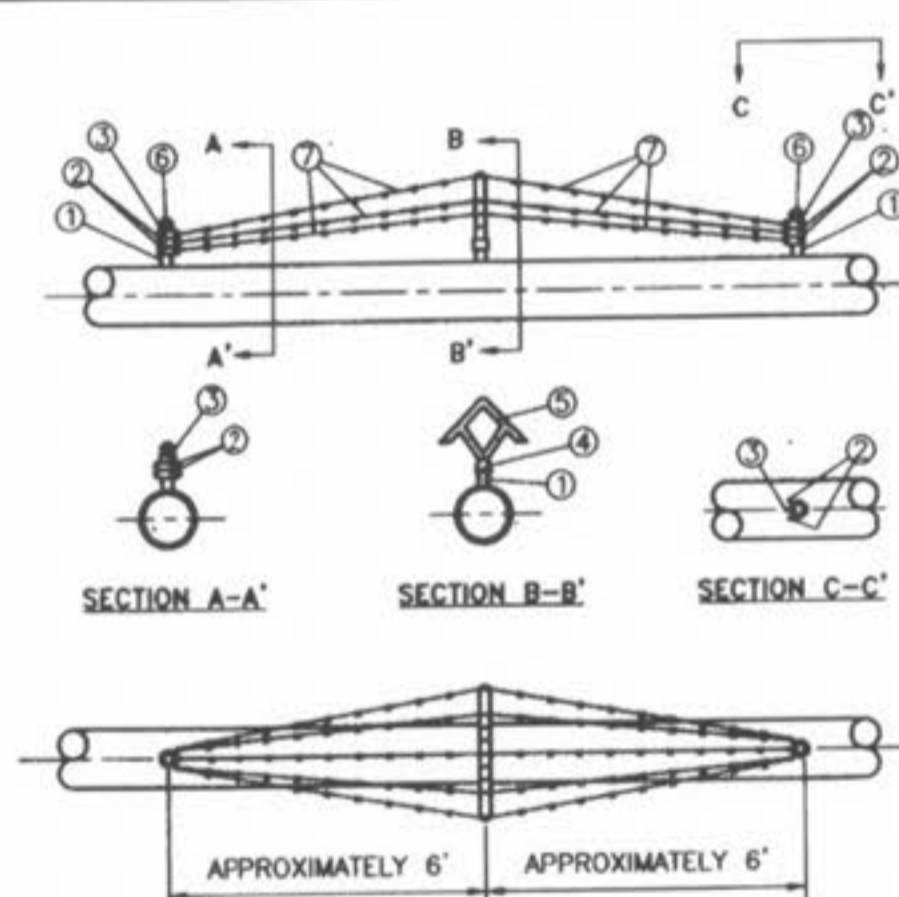
DUCKETT CREEK SANITARY DISTRICT

AERIAL CREEK CROSSING DETAIL
 Des. By: BSM App. By: KLA Detail No. 30A
 Chd. By: MDOB Date: 1-10-01



DUCKETT CREEK SANITARY DISTRICT

CONCRETE PIER DETAIL
 Des. By: BSM App. By: KLA Detail No. 30B
 Chd. By: MDOB Date: 1-9-01



BILL OF MATERIAL

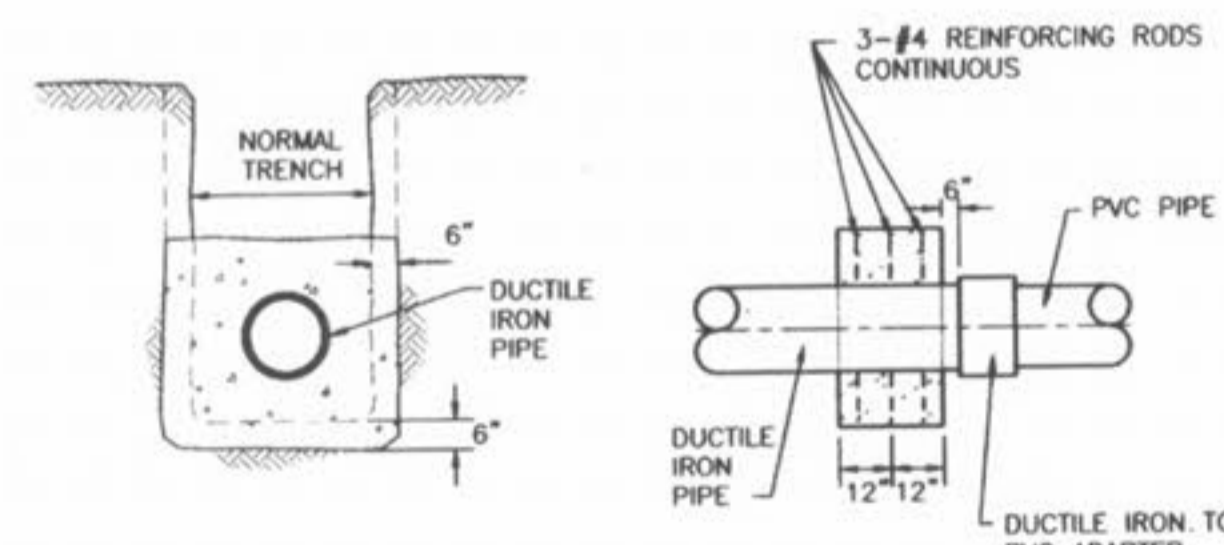
NO.	QTY	STK. NO.	SIZE	DESCRIPTION
1	6"	58290	1 1/2" x 5"	NIPPLE, STL. SCRD.
2	8		1/2" OD, 7/8"	BRACE BARD, GALV.
3	4		1/2" OD, 7/8"	BRACE BARD, GALV.
4	2		1/2" OD x 19U	UNIVERSAL BASE, GALV.
5	2		NORTHLAND 5 STRD.	ARM. STL., GALV. W/BOLT
6	4		NORTHLAND #1	CAP. ACORN, GALV. W/SET SCREW
7	1"	58850	4 POINT, 12" GAUGE	WIRE, BARBED, GALV.

- NOTES:**
- "BILL OF MATERIALS" PROVIDES SUFFICIENT MATERIAL FOR TWO BARRICADES.
 - LOCATION OF BARRICADES ON PIPING SYSTEM TO BE AS SPECIFIED ON APPROVED CONSTRUCTION DRAWINGS.
 - TWO BARRICADES WILL BE REQUIRED, ONE AT EACH END OF THE CROSSING AS A DETERRENT AGAINST FOOT TRAFFIC. IN SOME INSTANCES ADDITIONAL BARRICADES MAY BE REQUIRED.
 - COAT ANY EXPOSED PIPE WITH MASTIC, STOCK #51857.

DUCKETT CREEK SANITARY DISTRICT

AERIAL CROSSING BARRIER DETAIL
 Des. By: BSM App. By: KLA Detail No. 30C
 Chd. By: MDOB Date: 1-9-01

CROSSING NO.	TOTAL LENGTH OF PIPE L	LENGTH BETWEEN C OF PIPE SUPPORTS I	CARRIER PIPE OUTSIDE DIAMETER D	CARRIER PIPE WALL THICKNESS (IN.)
1				
2				



DUCKETT CREEK SANITARY DISTRICT

AERIAL CROSSING CONCRETE COLLAR DETAIL
 Des. By: BSM App. By: KLA Detail No. 30D
 Chd. By: MDOB Date: 1-9-01

PICKETT RAY & SILVER

333 Mid Rivers Mall Drive
 St. Peters, MO 63376
 Phone (636) 397-1211
 Fax (636) 397-1104

CIVIL ENGINEERS
 PLANNERS
 LAND SURVEYORS

WELLINGTON PARK
 DETAILS

THE JONES COMPANY
 Building Homes Since 1927
 A CENTEX Company

16640 Chesterfield Grove Blvd.
 Chesterfield, MO 63005
 (314) 235-7587

REVISIONS NO.	DATE	DESCRIPTION	BY

DRAWN E.J.S. DATE 03-04-03
 CHECKED DATE
 PROJECT # 02077.JCCH.OOR
 TASK # 6 FIELD 1997B
 BOOK 821