

11402 Gravois Road
Suite 100
Saint Louis, Missouri 63126
314.729.1400
Fax: 314.729.1404
www.cedc.net

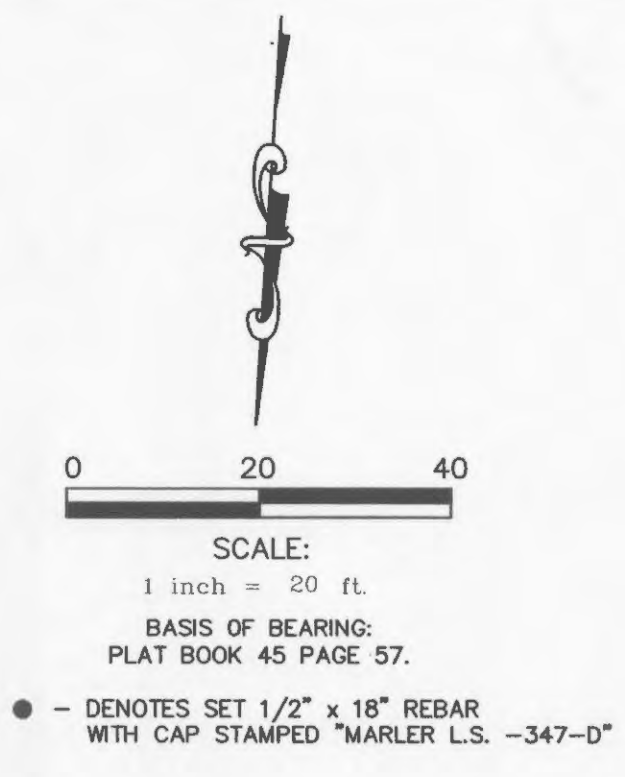
CEDC
CIVIL ENGINEERING
DESIGN CONSULTANTS

Improvement Plans
Wendy's Restaurant
1390 Mexico Loop Road East
O'Fallon, Missouri 63366

No.	Description	Date
Agency Submittal		04/25/08
Per City		07/15/08
		07/30/08
Per City		08/22/08

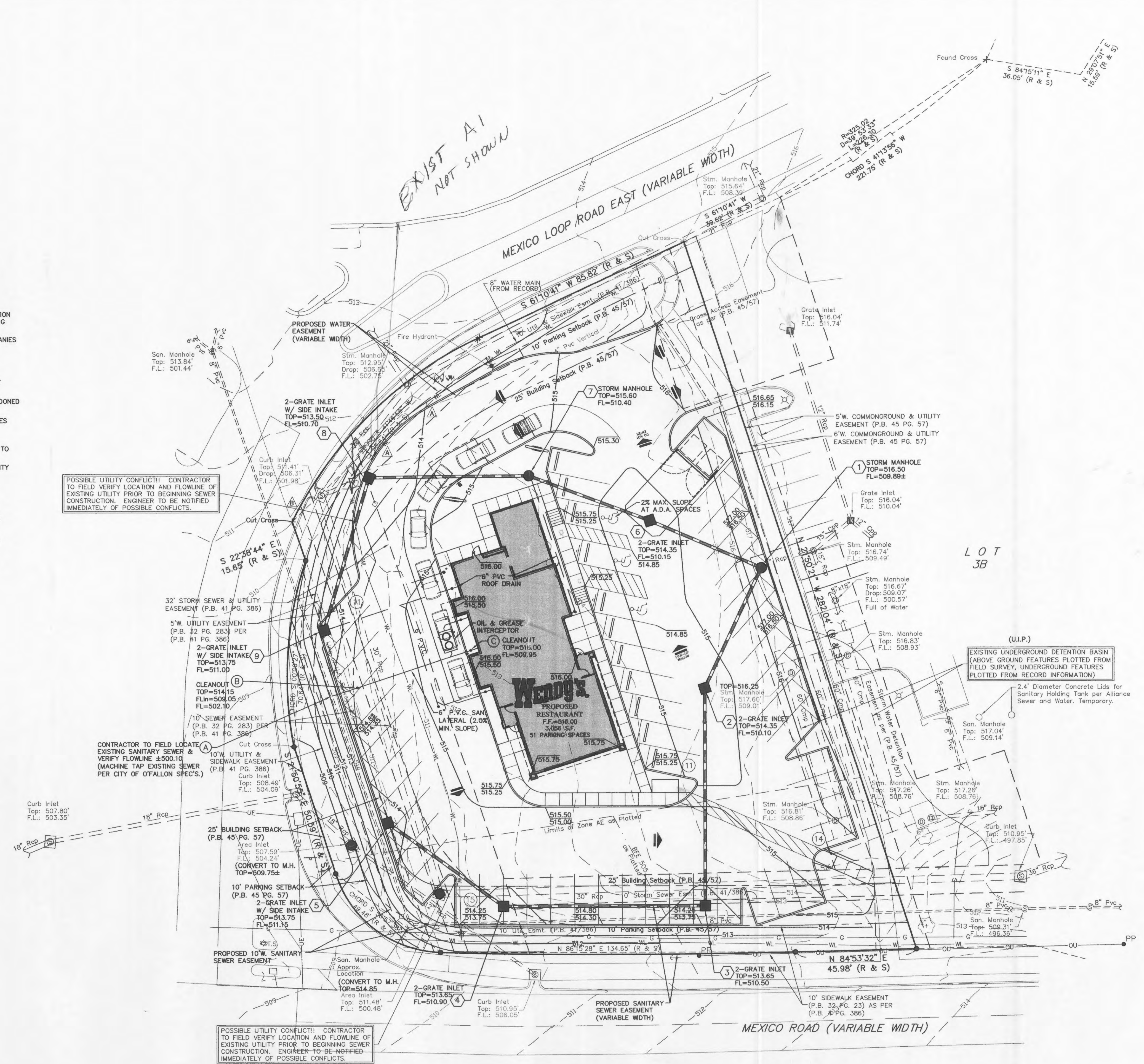
Site & Grading Plan

C4
of 9



GENERAL NOTES

- 1.) UNDERGROUND FACILITIES, STRUCTURES AND UTILITIES HAVE BEEN PLOTTED FROM AVAILABLE SURVEYS, RECORDS AND INFORMATION, AND, THEREFORE DO NOT NECESSARILY REFLECT THE ACTUAL EXISTENCE, NON-EXISTENCE, SIZE, TYPE, NUMBER, OR LOCATION OF THESE FACILITIES, STRUCTURES AND UTILITIES. THE CONTRACTOR SHALL BE RESPONSIBLE FOR VERIFYING THE ACTUAL LOCATION OF ALL UNDERGROUND FACILITIES, STRUCTURES, AND UTILITIES, EITHER SHOWN OR NOT SHOWN ON THESE PLANS. THE UNDERGROUND FACILITIES, STRUCTURES, AND UTILITIES SHALL BE LOCATED IN THE FIELD PRIOR TO ANY GRADING, EXCAVATION OR CONSTRUCTION OF IMPROVEMENTS. THESE PROVISIONS SHALL IN NO WAY ABSOLVE ANY PARTY FROM COMPLYING WITH THE UNDERGROUND FACILITY SAFETY AND DAMAGE PREVENTION ACT, CHAPTER 319 RSMO. CONTRACTOR SHALL SCHEDULE A UTILITY MEETING WITH REPRESENTATIVES OF ALL UTILITY COMPANIES PRIOR TO BIDDING AND CONSTRUCTION.
- 2.) THE CONTRACTOR SHALL BE RESPONSIBLE FOR COORDINATING CONSTRUCTION ACTIVITIES WITH POTENTIAL CONFLICTS AND/OR DISRUPTION OF SERVICE WITH THE RESPECTIVE UTILITY COMPANIES, FOR SEWER AND UTILITY INSTALLATIONS AND ALL OTHER ON-SITE ACTIVITIES.
- 3.) THE CONTRACTOR IS RESPONSIBLE FOR COORDINATING CONSTRUCTION PARKING WITH THE CITY OF O'FALLON AND WITH THE OWNER.
- 4.) CONTRACTOR SHALL VERIFY EXISTING UTILITY SERVICES ARE CAPPED OR REMOVED AND/OR ABANDONED AS REQUIRED PER THE SPECIFICATIONS OF THE APPROPRIATE GOVERNING AGENCY.
- 5.) PROVIDE PROTECTIONS NECESSARY TO PREVENT DAMAGE TO EXISTING IMPROVEMENTS AND UTILITIES INDICATED TO REMAIN IN PLACE.
- 6.) PROTECT IMPROVEMENTS ON ADJOINING PROPERTIES AND ON OWNER'S PROPERTY.
- 7.) RESTORE DAMAGED IMPROVEMENTS TO THEIR ORIGINAL CONDITION AND GRADES, AS ACCEPTABLE TO PROPERTY OWNERS.
- 8.) CONTRACTOR SHALL COORDINATE ALL PAVEMENT/HARDSCAPE INSTALLATION WITH PROPOSED UTILITY INSTALLATIONS TO AVOID THE CONDITION WHERE NEW PAVEMENT IS SAWCUT OR REMOVED FOR A REQUIRED UTILITY INSTALL. CONDUIT LOCATIONS AND UTILITY SERVICES SHALL BE REVIEWED BY CONTRACTOR, PRIOR TO PAVEMENT/HARDSCAPE INSTALLATIONS.
- 9.) WALKWAYS ALONG THE ACCESSIBLE ROUTE SHALL NOT HAVE A SLOPE EXCEEDING 1"V:20"H. SLOPES GREATER THAN 1"V:20"H MUST BE DESIGNED AS A RAMP.
- 10.) SIDEWALKS, CURB RAMPS, RAMPS AND ACCESSIBLE PARKING SPACES SHALL BE CONSTRUCTED IN ACCORDANCE WITH THE CURRENT APPROVED "AMERICANS WITH DISABILITIES ACT ACCESSIBILITY GUIDELINES" (ADAAG) ALONG WITH THE REQUIRED GRADES, CONSTRUCTION MATERIALS, SPECIFICATIONS AND SIGNAGE. IF ANY CONFLICT OCCURS BETWEEN THE ADAAG GUIDELINES AND THE INFORMATION ON THE PLANS, THE ADAAG GUIDELINES SHALL TAKE PRECEDENCE AND THE CONTRACTOR SHALL NOTIFY THE PROJECT ENGINEER PRIOR TO ANY CONSTRUCTION.
- 11.) TRAFFIC CONTROL IS TO BE PER CITY OF O'FALLON OR MUTCD WHICHEVER IS MORE STRINGENT.



POSSIBLE UTILITY CONFLICT! CONTRACTOR TO FIELD VERIFY LOCATION AND FLOWLINE OF EXISTING UTILITY PRIOR TO BEGINNING SEWER CONSTRUCTION. ENGINEER TO BE NOTIFIED IMMEDIATELY OF POSSIBLE CONFLICTS.

CONTRACTOR TO FIELD LOCATE EXISTING SANITARY SEWER & VERIFY FLOWLINE AS 500.10 (MACHINE TAP EXISTING SEWER PER CITY OF O'FALLON SPEC'S.)

POSSIBLE UTILITY CONFLICT! CONTRACTOR TO FIELD VERIFY LOCATION AND FLOWLINE OF EXISTING UTILITY PRIOR TO BEGINNING SEWER CONSTRUCTION. ENGINEER TO BE NOTIFIED IMMEDIATELY OF POSSIBLE CONFLICTS.