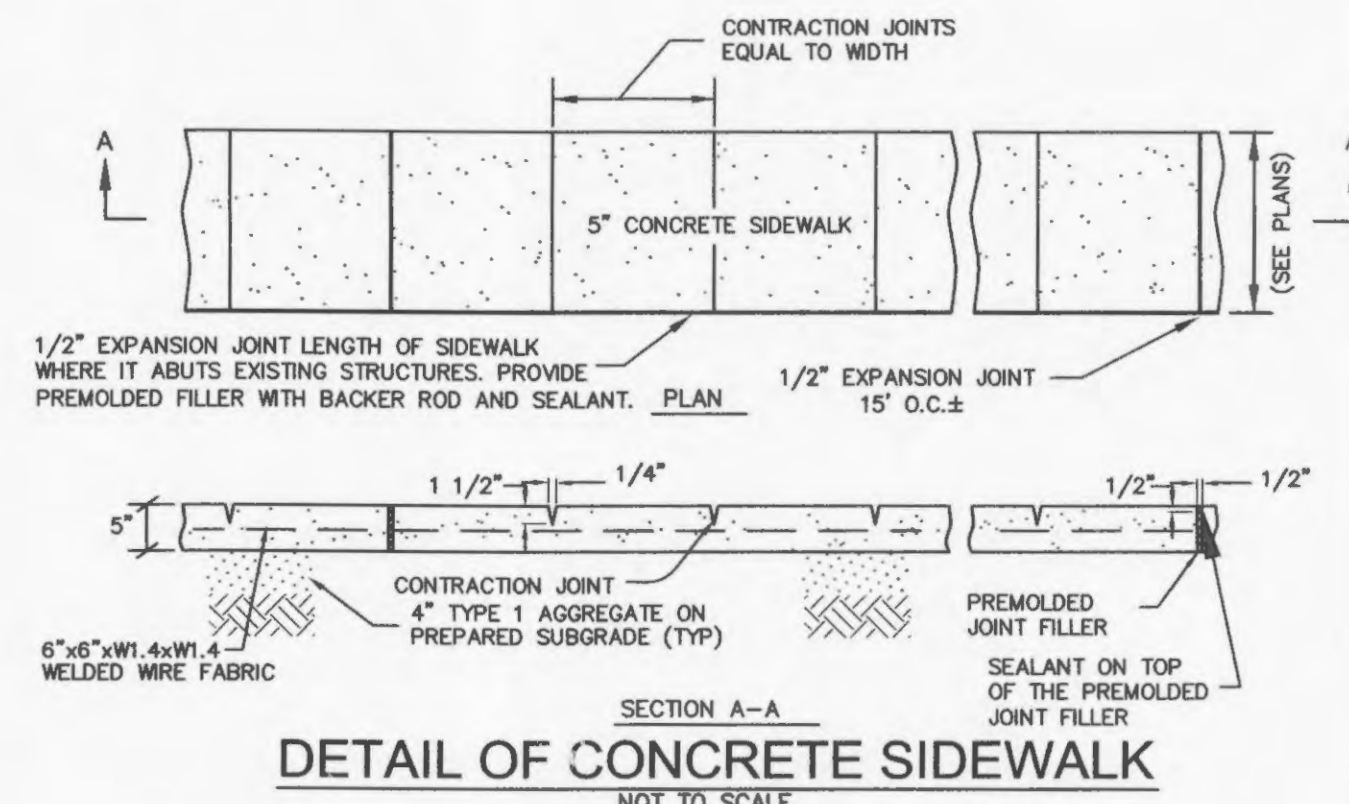
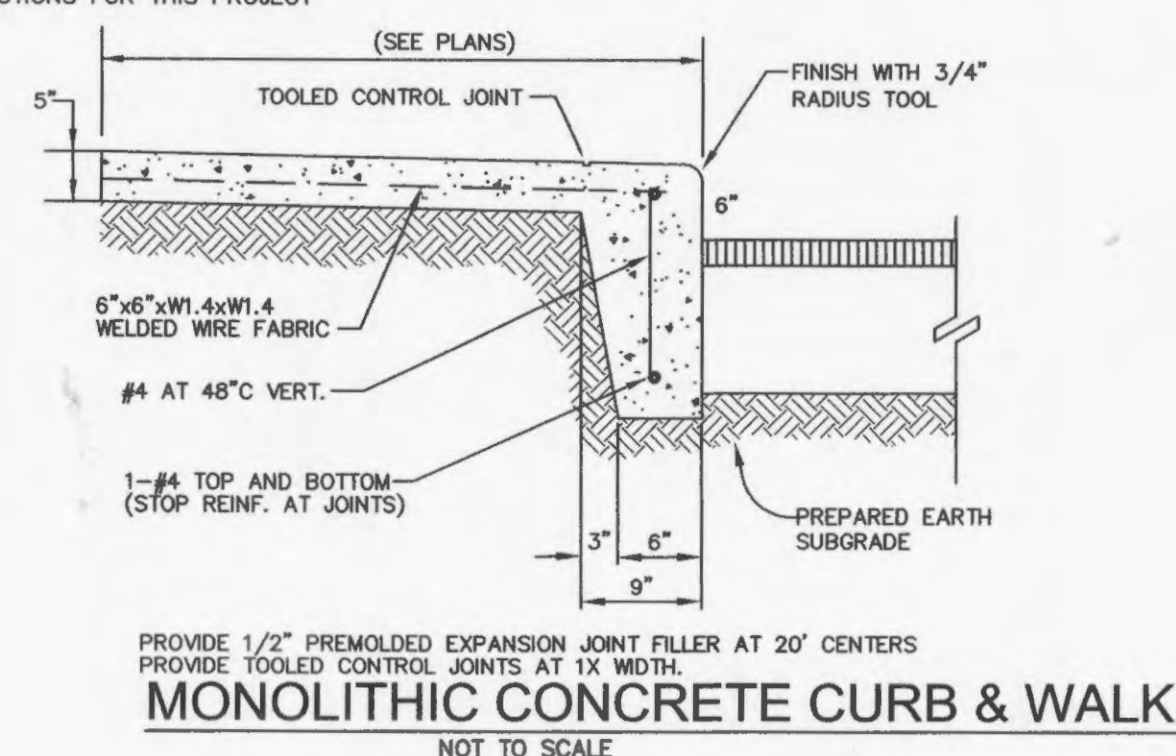
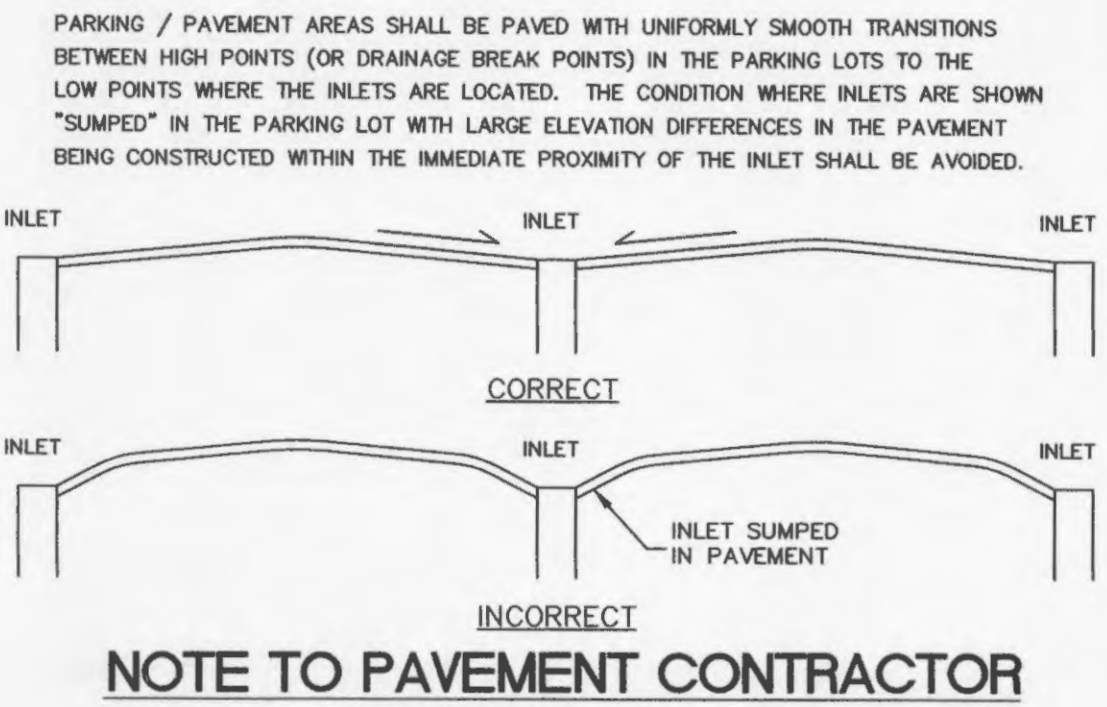


- AGGREGATE BASE PER ST. CHARLES COUNTY STANDARD SPECIFICATIONS FOR HIGHWAY CONSTRUCTION
- NOTES:
- REFER TO SITE PLAN FOR AREAS OF PAVEMENT TYPE AND THICKNESS.
 - EXPANSION MATERIAL SHALL BE INSTALLED EVERY 20' IN CURB. EXPANSION MATERIAL SHALL BE OF A TYPE EQUAL TO THE ASPHALT IMPREGATED FIBERBOARD CONFORMING TO ASTM C 175 FOR EXTERIOR WORK. EXPANSION MATERIAL SHALL EXTEND FULL DEPTH OF CURB AND GUTTER, LESS 1/4" AT TOP OF CONCRETE.
 - CURBS TO BE PROVIDED WITH SAW CUT OR TOOLED JOINT AT 10' INTERVALS.
 - JOINTS AND SAW CUTS TO BE SEALED WITH LIMESTONE COLORED SEALANT.

PAVEMENT SECTIONS REFERENCED IN THESE PLANS HAVE NOT BEEN DESIGNED BY CEDC, INC. FOR THIS PROJECT. THEY REPRESENT PAVEMENT SECTIONS USED ON SIMILAR PROJECTS. HOWEVER, EACH PROJECT IS UNIQUE AND REQUIRES ITS OWN ANALYSIS BY A GEOTECHNICAL ENGINEER. THEREFORE, CEDC, INC. RECOMMENDS A GEOTECHNICAL ENGINEER DESIGN THE PROPOSED PAVEMENT SECTIONS FOR THIS PROJECT



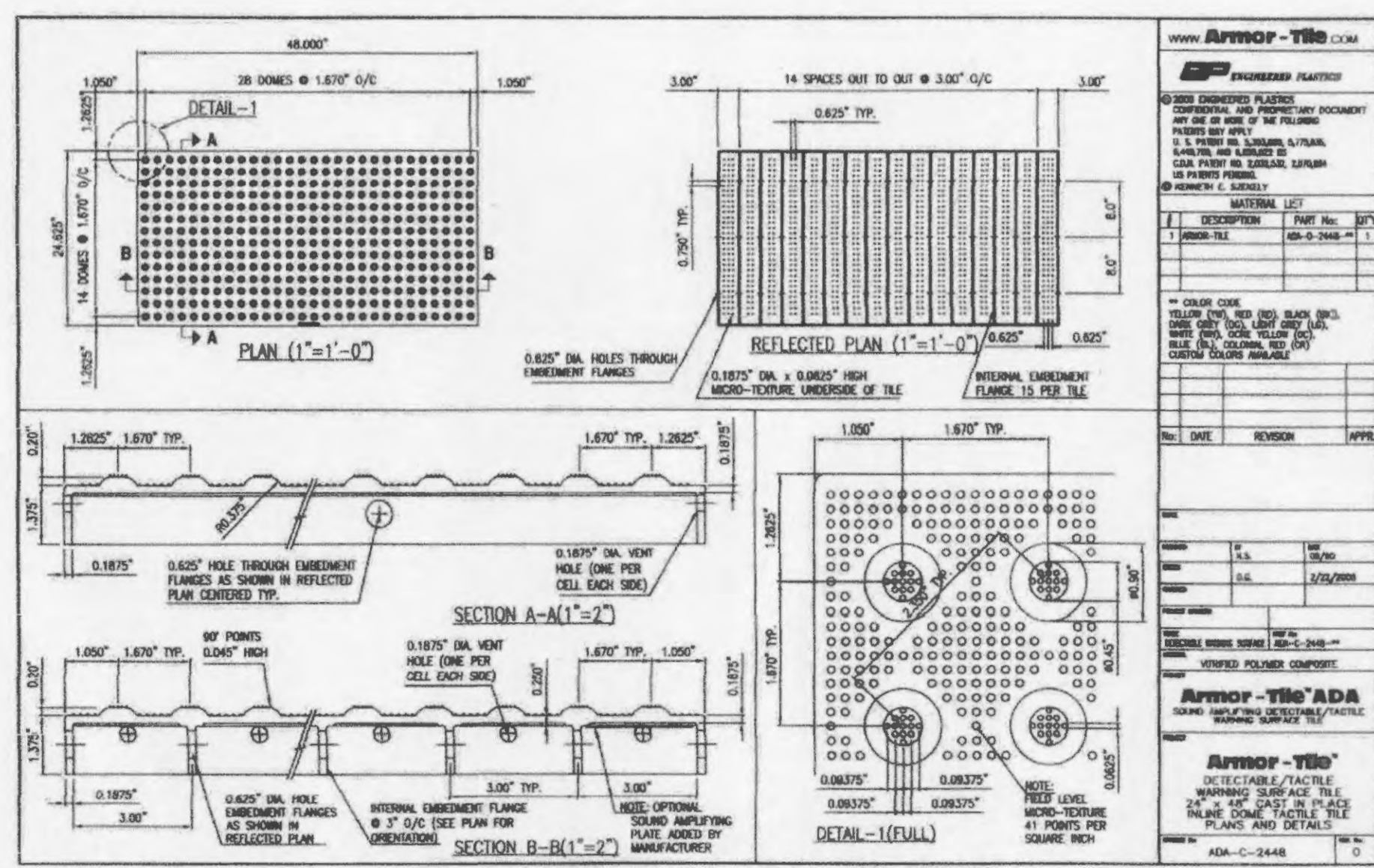
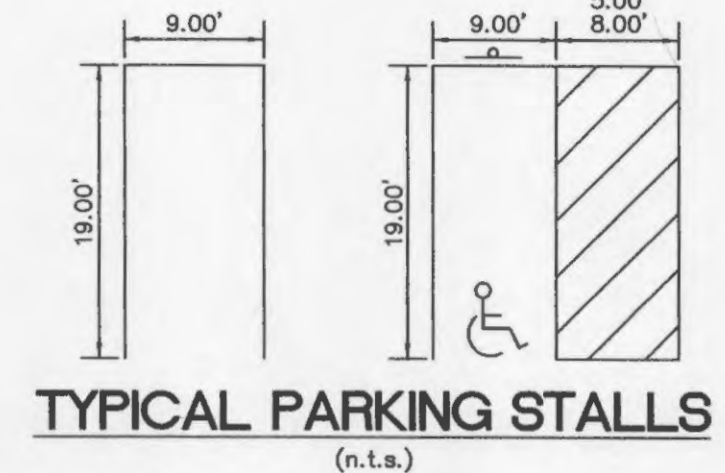
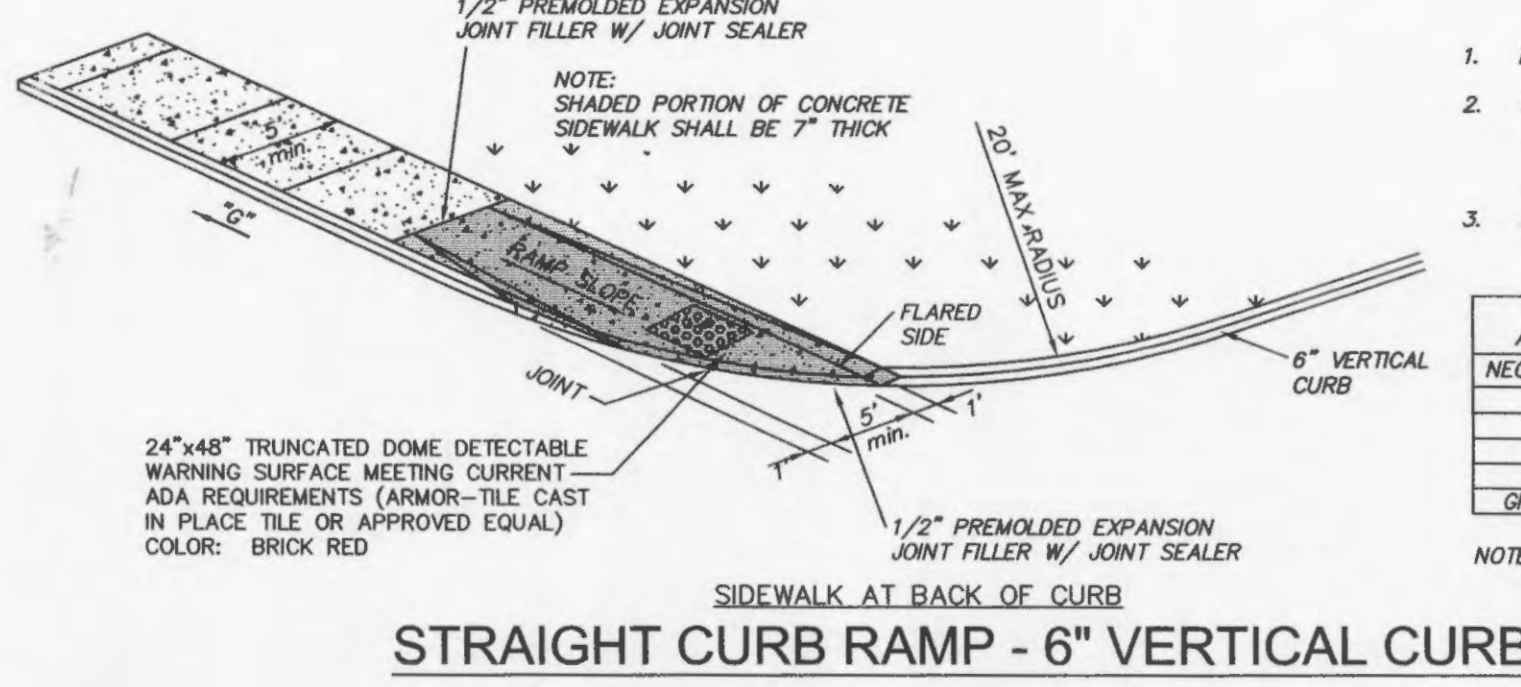
1. DO NOT SCALE DRAWING. FOLLOW DIMENSIONS.

2. SIDEWALKS AND SIDEWALK CURB RAMPS SHALL BE CONSTRUCTED IN ACCORDANCE WITH THESE DETAILS AND THE CURRENT APPROVED "AMERICANS WITH DISABILITIES ACT ACCESSIBILITY GUIDELINES" (ADAAG).

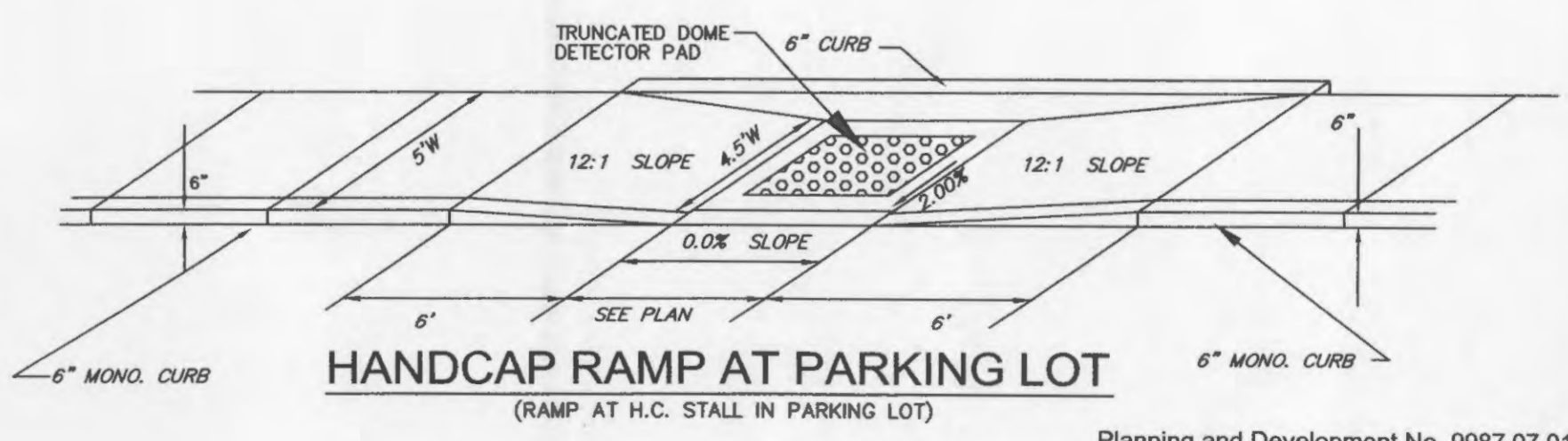
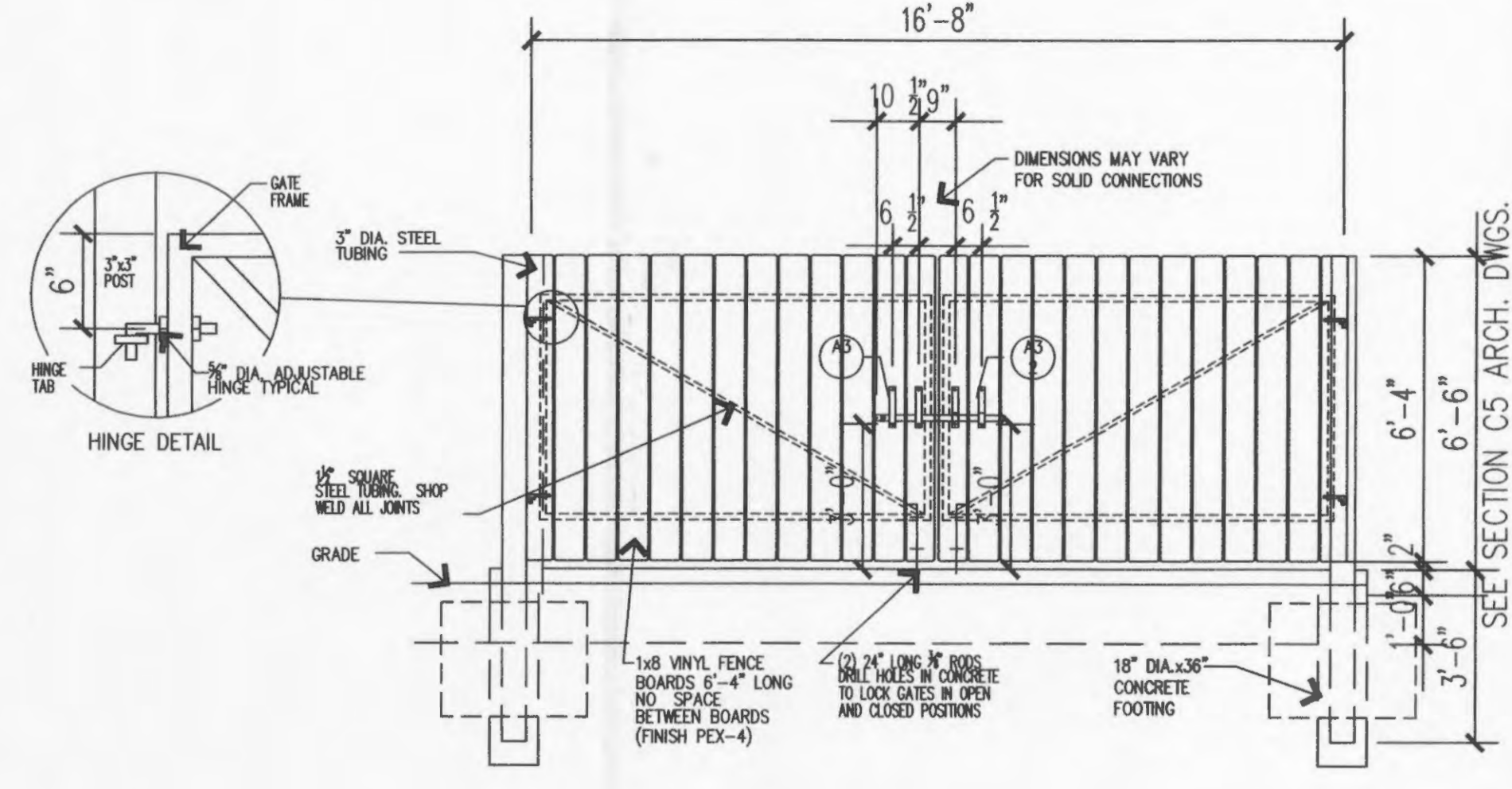
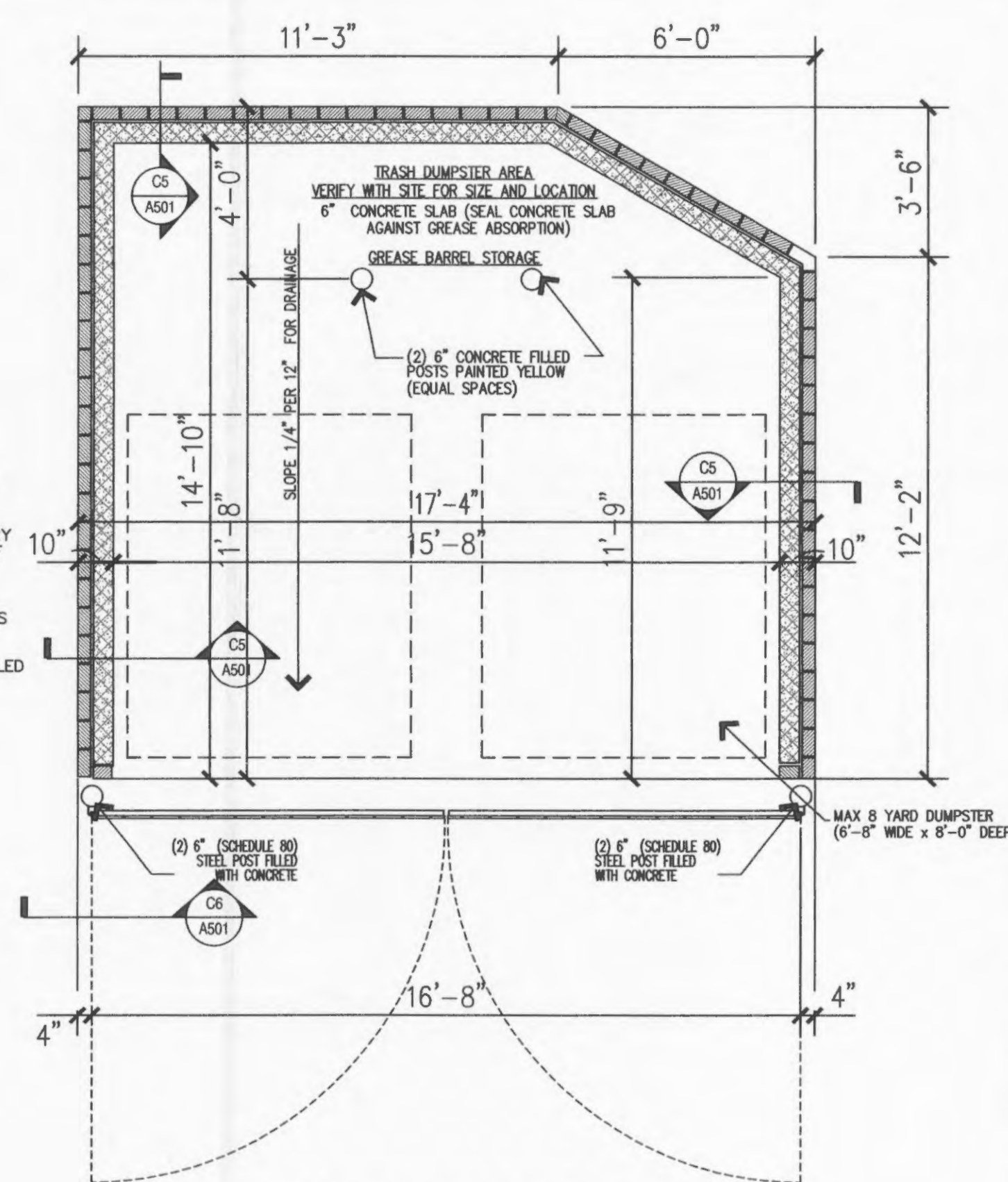
3. MAXIMUM SIDEWALK CROSS SLOPE 0.02'/FT.

"G" GRADE ALONG CURB (X)	"X" MIN. LENGTH OF RAMP SLOPE (L.F.)
NEGATIVE (-) VALUES	6
0 TO +1	7
+1.01 TO +2	8
+2.01 TO +3	10
+3.01 TO +4	12
GREATER THAN +4	15

NOTE: POSITIVE (+) "G" - PROCEEDING AWAY FROM INTERSECTION AND UP A GRADE.
NEGATIVE (-) "G" - PROCEEDING AWAY FROM INTERSECTION AND DOWN A GRADE.



- DO NOT SCALE DRAWING. FOLLOW DIMENSIONS.
- SIDEWALKS AND SIDEWALK CURB RAMPS SHALL BE CONSTRUCTED IN ACCORDANCE WITH THESE DETAILS AND THE CURRENT APPROVED "AMERICANS WITH DISABILITIES ACT ACCESSIBILITY GUIDELINES" (ADAAG).
- PROVIDE A LANDING AT THE TOP OF EACH STRAIGHT RAMP WHEN THE GRADE ALONG CURB ("G") IS GREATER THAN +2% AND LESS THAN +7%. FOR OTHER VALUES OF "G", INCLUDING ALL NEGATIVE (-) VALUES, NO LANDING IS REQUIRED.
- MINIMUM SIDEWALK WIDTH ALONG 6" VERTICAL CURB SHALL BE 5 FEET. MINIMUM SIDEWALK WIDTH ALONG 3" ROLLED CURB SHALL BE 4 FEET.
- MAXIMUM SIDEWALK CROSS SLOPE 0.02'/FT.
- ALL SIDEWALK SECTIONS SHALL BE 4" THICK, EXCEPT WHERE INDICATED OTHERWISE BY SHADED PORTIONS SHOWN ON DETAILS.
- WHERE CURB RAMP MEETS PAVEMENT, BULLNOSE WILL NOT BE PERMITTED.
- CONSTRUCT A DIAGONAL RAMP WHEN THE MAXIMUM CORNER RADIUS ALLOWED FOR A STRAIGHT RAMP IS EXCEEDED.
- IF INTEGRAL CONCRETE CURB IS CONSTRUCTED, STRIKE A DUMMY JOINT ACROSS BOTTOM OF RAMP AT CURB LINE. IF CONCRETE CURB IS DOWEL-ON, BLOCK OUT PAVEMENT TO PROVIDE FULL DEPTH CURB ACROSS RAMP FROM OUTER POINT OF CURB TAPER TO OUTER POINT OF CURB TAPER.
- FOR PAVEMENT LONGITUDINAL AND TRANSVERSE JOINTS AND DOWEL AND THE BAR REQUIREMENTS AND DIMENSIONS, REFER TO THE PAVEMENT CONSTRUCTION DETAILS FOR "JOINTS AND CURBS", ST. LOUIS COUNTY STANDARD DRAWING C502.03.



STATE OF MISSOURI
REGISTERED PROFESSIONAL ENGINEER
BRANDON A. HARP, P.E. E-28650

CEDC
CIVIL ENGINEERING
DESIGN CONSULTANTS

11402 Gravois Road
Suite 100
Saint Louis, Missouri 63126
314.729.1400
Fax: 314.729.1404
www.cedc.net

Improvement Plans
Wendy's Restaurant
1390 Mexico Loop Road East
O'Fallon, Missouri 63366

Proj. #	Description	Date
0747	Agency Submittal	04/25/08
	Per City	07/15/08
		07/30/08
	Trash Enclosure	09/02/08

Site & Pavement Details

C7

Planning and Development No. 9987.07.01
Approval - March 6, 2008
City Council Approval - March 27, 2008

OF 9