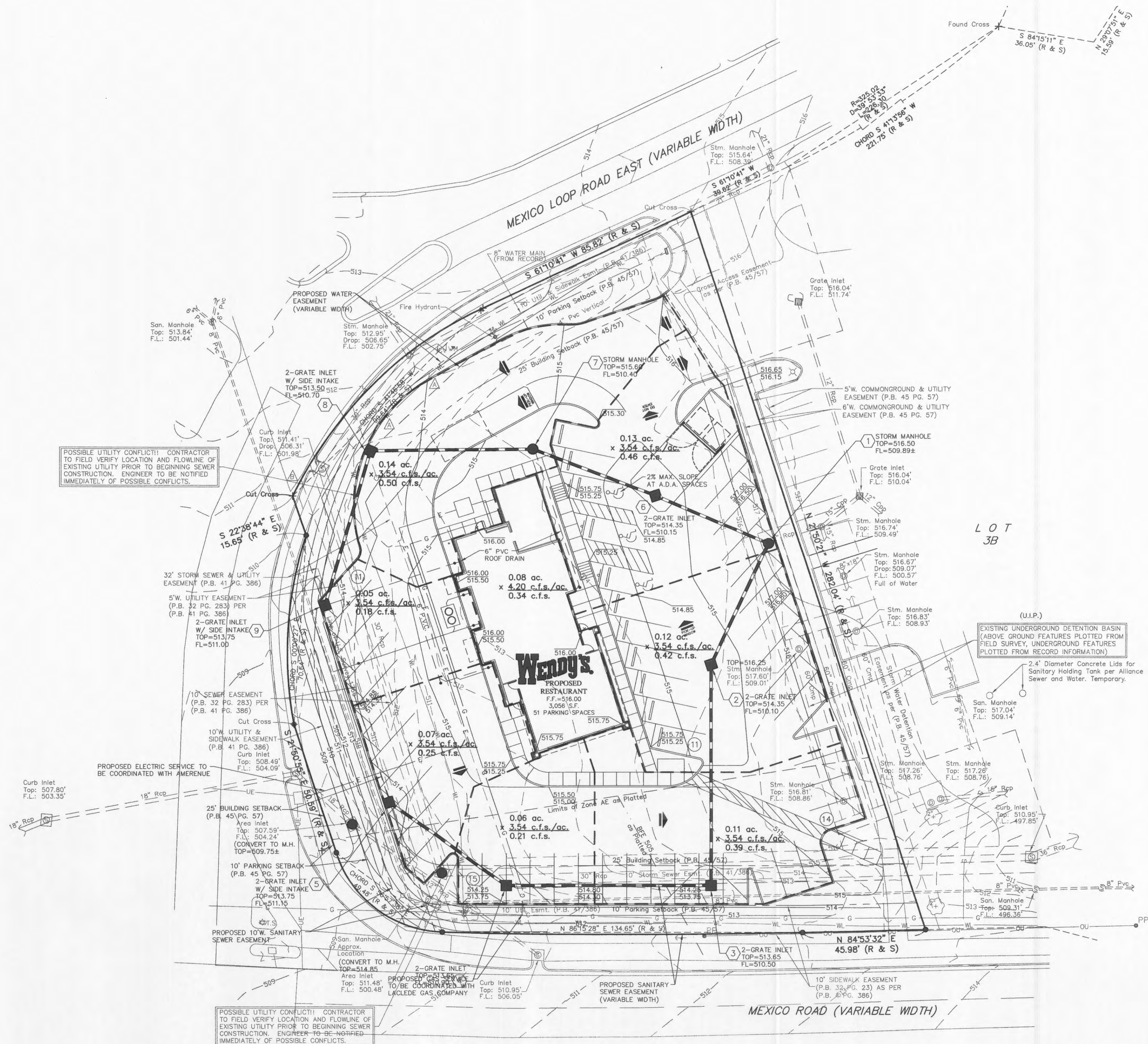


SCALE:  
1 inch = 20 ft.  
BASIS OF BEARING:  
PLAT BOOK 45 PAGE 57.  
● - DENOTES SET 1/2" x 18" REBAR  
WITH CAP STAMPED "MARLER L.S. -347-D"



POSSIBLE UTILITY CONFLICT!! CONTRACTOR TO FIELD VERIFY LOCATION AND FLOWLINE OF EXISTING UTILITY PRIOR TO BEGINNING SEWER CONSTRUCTION. ENGINEER TO BE NOTIFIED IMMEDIATELY OF POSSIBLE CONFLICTS.

(U.I.P.)  
EXISTING UNDERGROUND DETENTION BASIN (ABOVE GROUND FEATURES PLOTTED FROM FIELD SURVEY, UNDERGROUND FEATURES PLOTTED FROM RECORD INFORMATION)  
2.4' Diameter Concrete Lids for Sanitary Holding Tank per Alliance Sewer and Water. Temporary.

POSSIBLE UTILITY CONFLICT!! CONTRACTOR TO FIELD VERIFY LOCATION AND FLOWLINE OF EXISTING UTILITY PRIOR TO BEGINNING SEWER CONSTRUCTION. ENGINEER TO BE NOTIFIED IMMEDIATELY OF POSSIBLE CONFLICTS.



BRANDON A. HARP, P.E. E-28650

**CEDC**  
CIVIL ENGINEERING  
DESIGN CONSULTANTS  
11402 Gravois Road  
Suite 100  
Saint Louis, Missouri 63126  
314.729.1400  
Fax: 314.729.1404  
www.cedc.net

Improvement Plans  
**Wendy's Restaurant**  
1390 Mexico Loop Road East  
O'Fallon, Missouri 63366

Proj. #	0747
No. Description	Date
Agency Submittal	04/25/08
Per City	07/15/08
	07/30/08

Drainage  
Area Plan

**C8**

**FOR DRAINAGE AREAS ONLY  
NOT FOR CONSTRUCTION**

EXISTING DETENTION BASIN HAS BEEN SIZED WITH THIS LOT FULLY DEVELOPED PER THE CITY OF O'FALLON

Planning and Development No. 9987.07.01  
Planning and Zoning Commission  
Approval - March 6, 2008  
City Council Approval - March 27, 2008