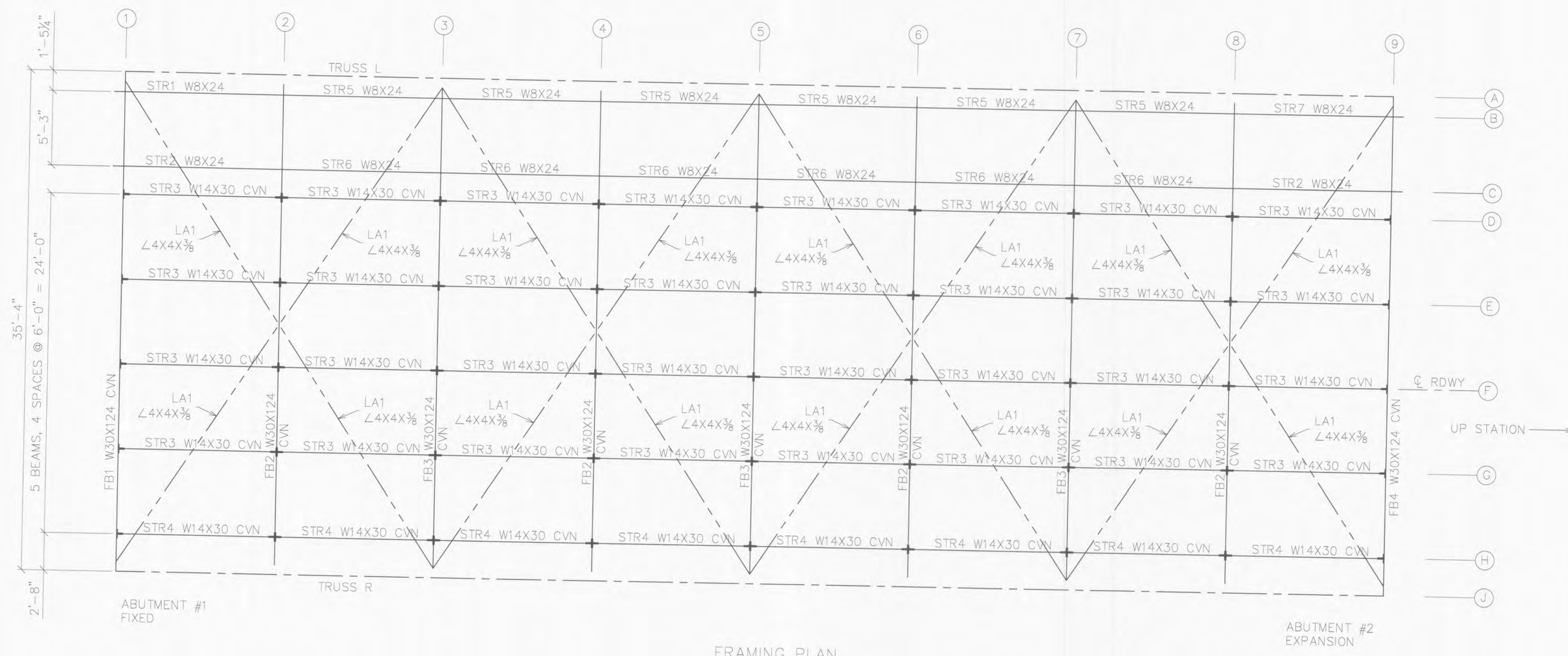


TOTAL SHOP CAMBER = 1 1/2"
(REFER TO TRUSS ASSEMBLY DWGS)

TRUSS ELEVATION
(GEOMETRY SHOWN IS FINAL LOADED POSITION)



FRAMING PLAN

S:\JOBS\MISSOURI\51687-Contech-Wentzville,MO-Wentzville High School-90x27+8ft.SW Galv.&Painted Truss\Drawings\51687 ASD12.dwg

SYMBOLS & ABBREVIATIONS

ES: EACH SIDE	NS: NEAR SIDE
EQ: EQUAL	FS: FAR SIDE
CL: CENTERLINE	WP: WORK POINT
REF: REFERENCE	GA: GAUGE
CHK: CHECK	ID: INSIDE DIAMETER
Q/O: OUT TO OUT	OD: OUTSIDE DIAMETER
C/C: CENTER TO CENTER	BRG: BEARING
F/F: FACE TO FACE	TYP: TYPICAL
DIA/Ø: DIAMETER	UNO: UNLESS NOTED OTHERWISE
R: RADIUS	ABUT: ABUTMENT
	T&B: TOP & BOTTOM

DIST. BY:
FAB. BY:



SUBMITTAL LOG		DATE	NO.	DATE	REVISIONS	BY
INITIAL SUBMITTAL		1/31/13	▲			
RESUBMITTAL NO.		-	▲			
CUSTOMER APPROVAL		-	▲			
SHOP REVIEW		-	▲			
PRE FAB MTG		-	▲			
APPROVED FOR FAB		-	▲			

WENTZVILLE HIGH SCHOOL WENTZVILLE, MISSOURI			
DESIGN: SAF	DRAW: JEC	REVIEW: DLM	CHECK: CJG
CONSTRUCTION PLANS		FRAMING	USB JOB# 51687
		SHEET 2	40 TOTAL

FOR REVIEW
NOT FOR FABRICATION
1/31/13