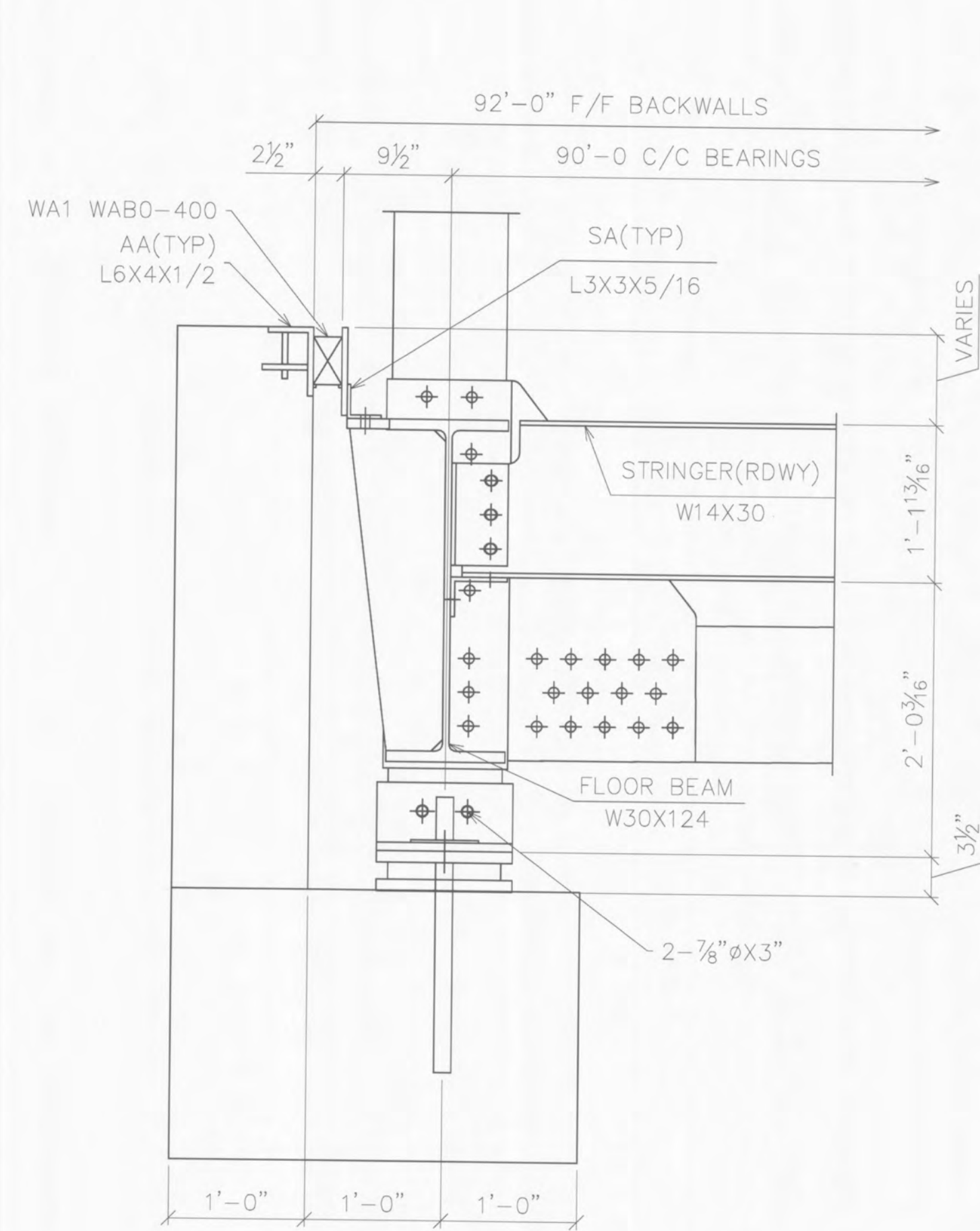
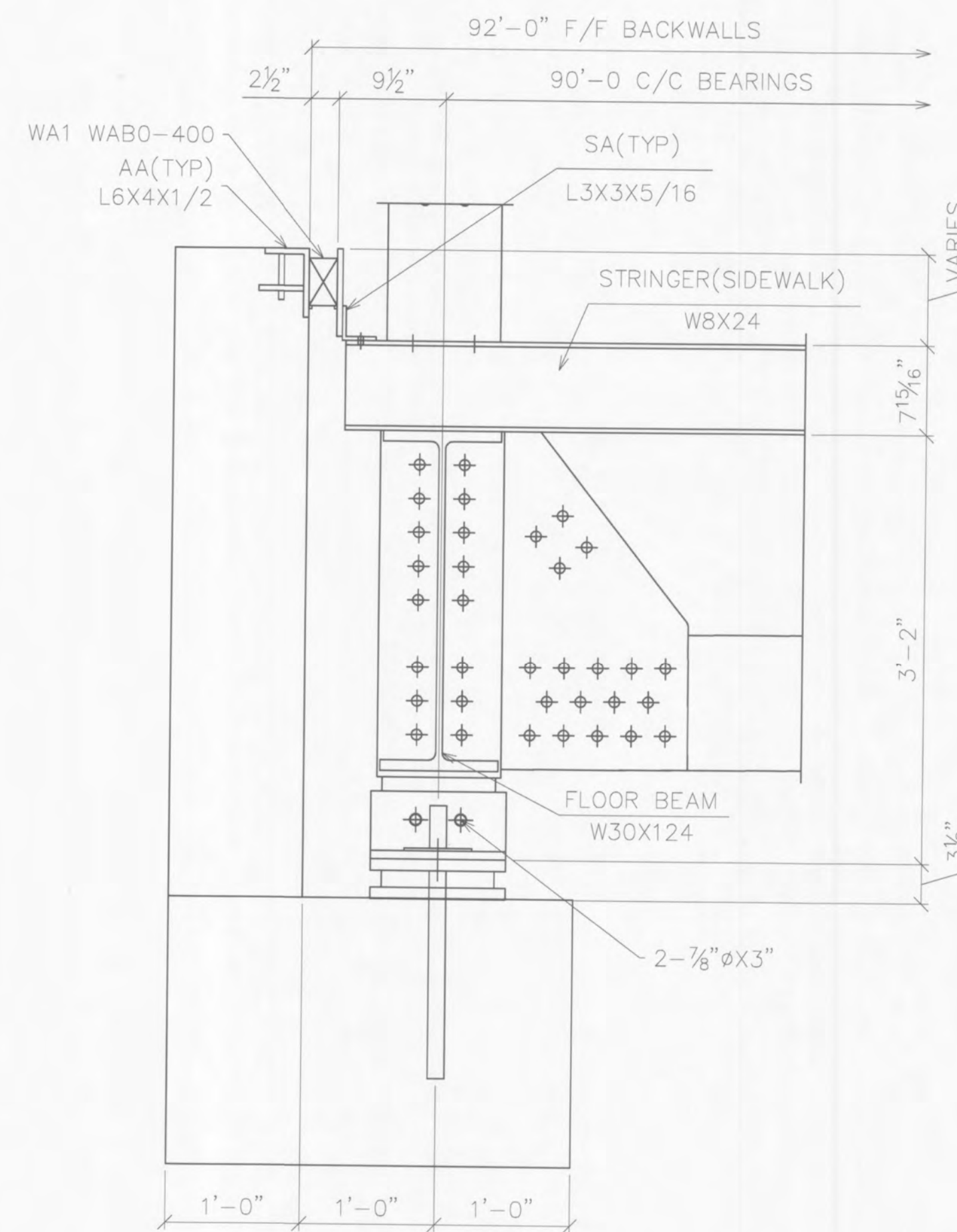


ABUTMENT ELEVATION DETAIL



BEARING DETAIL AT RDWY STRINGER



BEARING DETAIL AT SIDEWALK

NOTE:  
ALL BOLTS REQUIRE ONE NUT & ONE WASHER UNO

FOR REVIEW  
NOT FOR FABRICATION

1/31/13

SYMBOLS & ABBREVIATIONS

ES: EACH SIDE	NS: NEAR SIDE
EQ: EQUAL	FS: FAR SIDE
C: CENTERLINE	WP: WORK POINT
REF: REFERENCE	GA: GAUGE
CHK: CHECK	ID: INSIDE DIAMETER
Ø: OUT TO OUT	OD: OUTSIDE DIAMETER
C/C: CENTER TO CENTER	BRG: BEARING
F/F: FACE TO FACE	TYP: TYPICAL
DIA/Ø: DIAMETER	UNO: UNLESS NOTED OTHERWISE
R: RADIUS	ABUT: ABUTMENT
	T&B: TOP & BOTTOM

DIST. BY:

FAB. BY:

SUBMITTAL LOG	DATE	NO.	DATE:	REVISIONS:	BY:
INITIAL SUBMITTAL	1/31/13	▲			
RESUBMITTAL NO.	-	▲			
CUSTOMER APPROVAL	-	▲			
SHOP REVIEW	-	▲			
PRE FAB MTG	-	▲			
APPROVED FOR FAB	-	▲			

WENTZVILLE HIGH SCHOOL  
WENTZVILLE, MISSOURI

DESIGN: SAF	DRAW: JEC	REVIEW: DLM	CHECK: CJG	SHEET
CONSTRUCTION PLANS			ABUTMENTS	4b
USB JOB# 51687			40	TOTAL