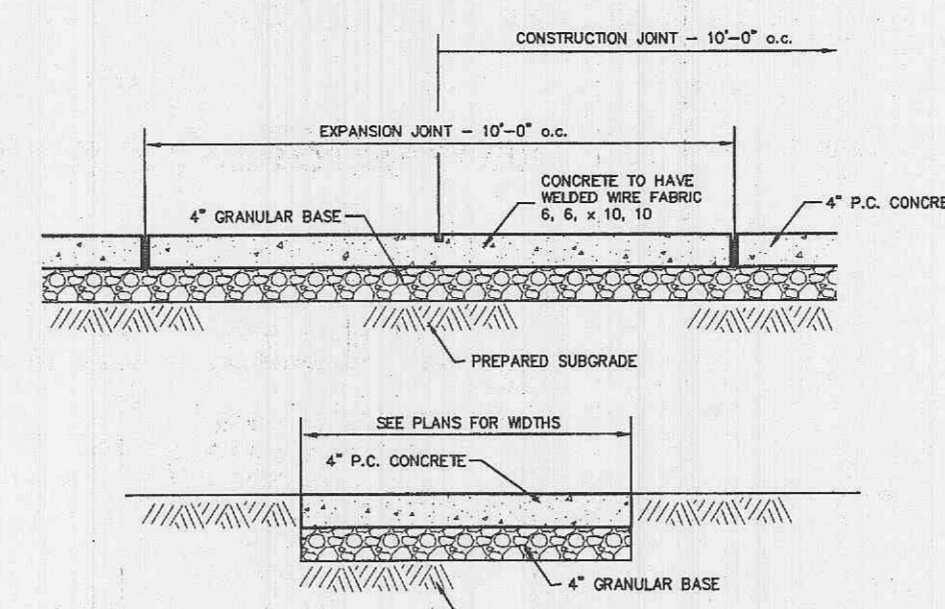


- NOTES:
1. STRAW BALES, NOT HAY BALES SHALL BE USED
  2. BUTT ENDS OF BALES TIGHTLY TOGETHER.
  3. INSTALL BALES WITH BINDING AROUND SIDES, NOT TOP AND BOTTOM.
  4. FILL ANY GAP BETWEEN BALES BY WEDGING LOOSE STRAW BETWEEN THEM.

SEDIMENT BARRIER  
NOT TO SCALE



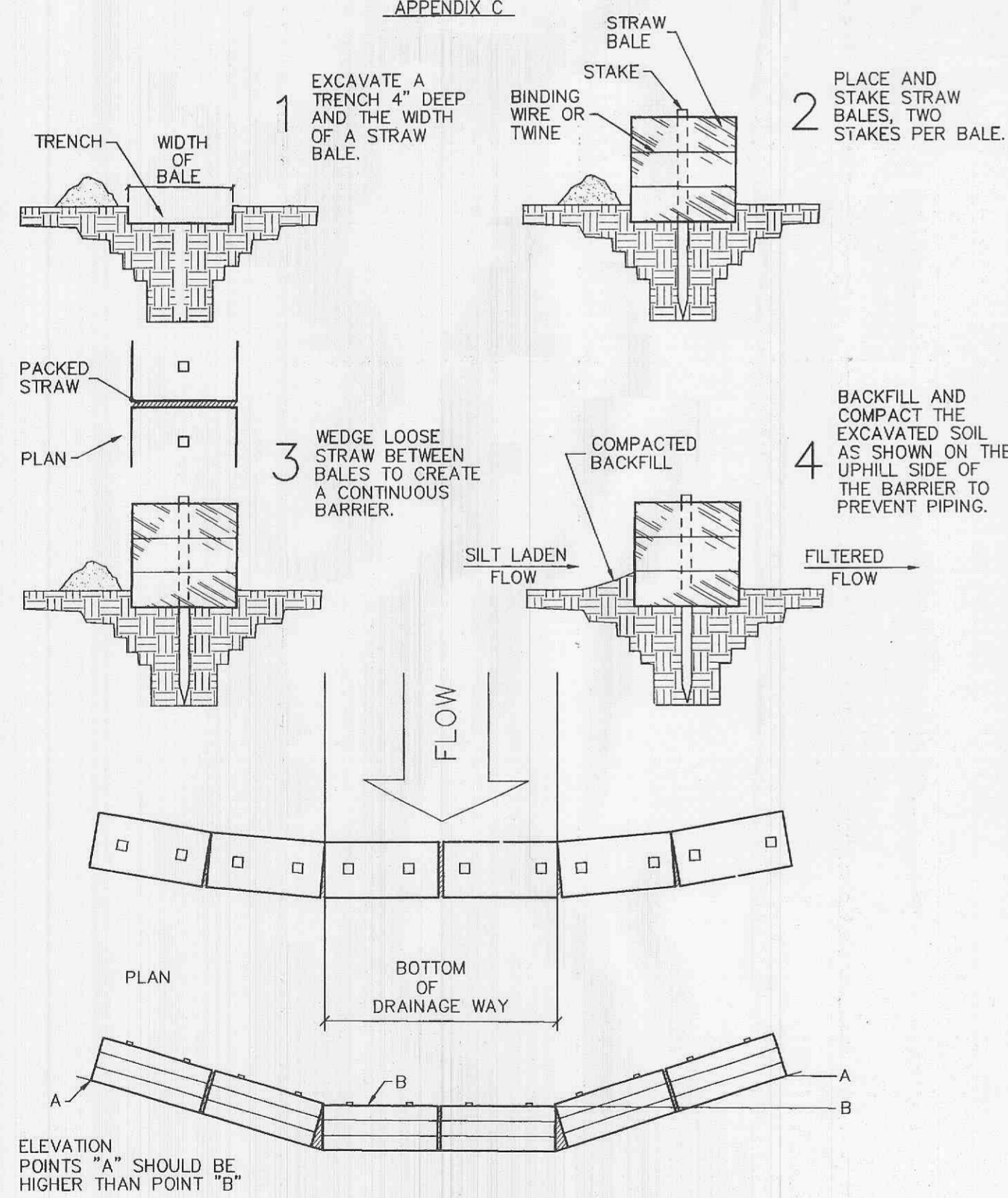
CONCRETE SIDEWALK DETAIL  
NOT TO SCALE

1. FILTER BARRIERS SHALL BE INSPECTED IMMEDIATELY AFTER EACH RAINFALL AND AT LEAST DAILY DURING PROLONGED RAINFALL. ANY REQUIRED REPAIRS SHALL BE MADE IMMEDIATELY.
2. SHOULD THE FABRIC DECOMPOSE OR BECOME INEFFECTIVE PRIOR TO THE END OF THE EXPECTED USABLE LIFE AND THE BARRIER STILL BE NECESSARY, THE FABRIC SHALL BE REPLACED PROMPTLY.
3. SEDIMENT DEPOSITS SHOULD BE REMOVED AFTER EACH STORM EVENT. THEY MUST BE REMOVED WHEN DEPOSITS REACH APPROXIMATELY HALF THE HEIGHT OF THE BARRIER.
4. ANY SEDIMENT DEPOSITS REMAINING IN PLACE AFTER THE SILT FENCE OR FILTER BARRIER IS NO LONGER REQUIRED SHALL BE DRESSED TO CONFORM WITH THE EXISTING GRADE, PREPARED AND SEEDDED.

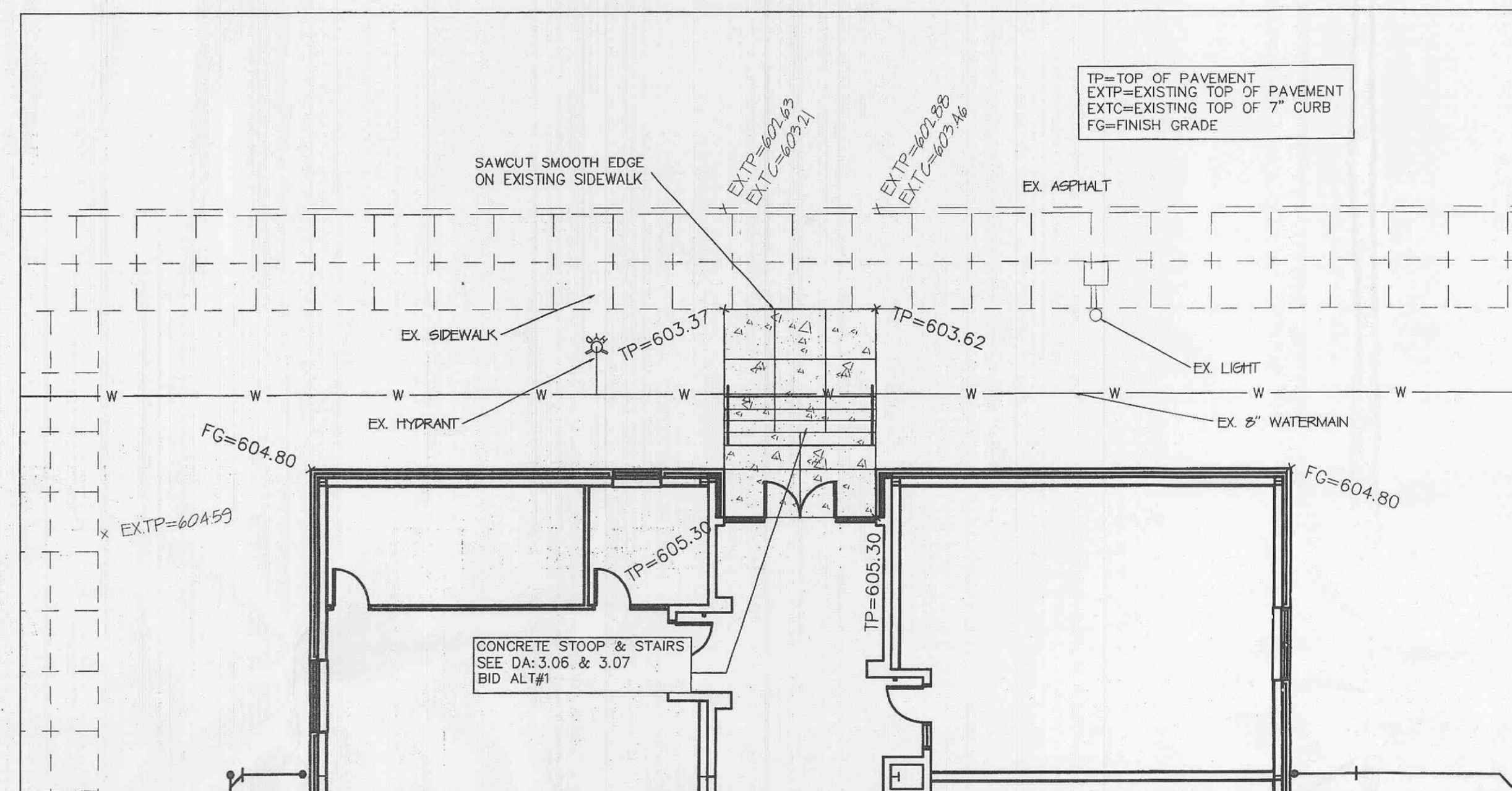


SILTATION FENCE DETAIL

STRAW BALES BARRIERS FOR URBAN DEVELOPMENT SITES  
APPENDIX C

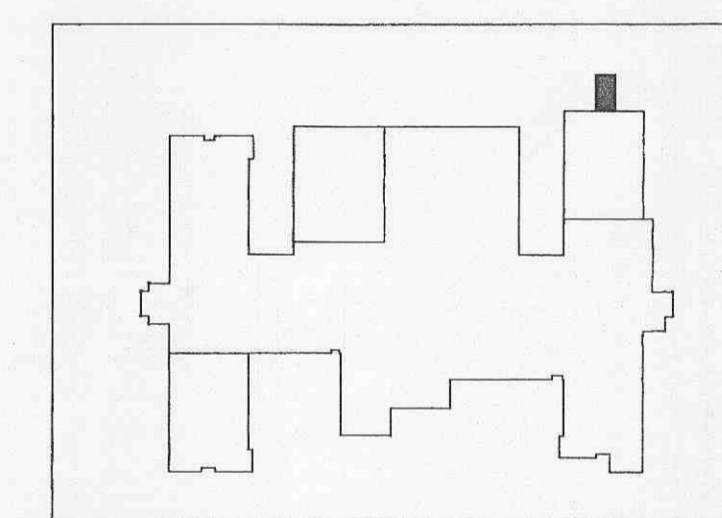


PLACEMENT AND CONSTRUCTION OF STRAW BALE BARRIER

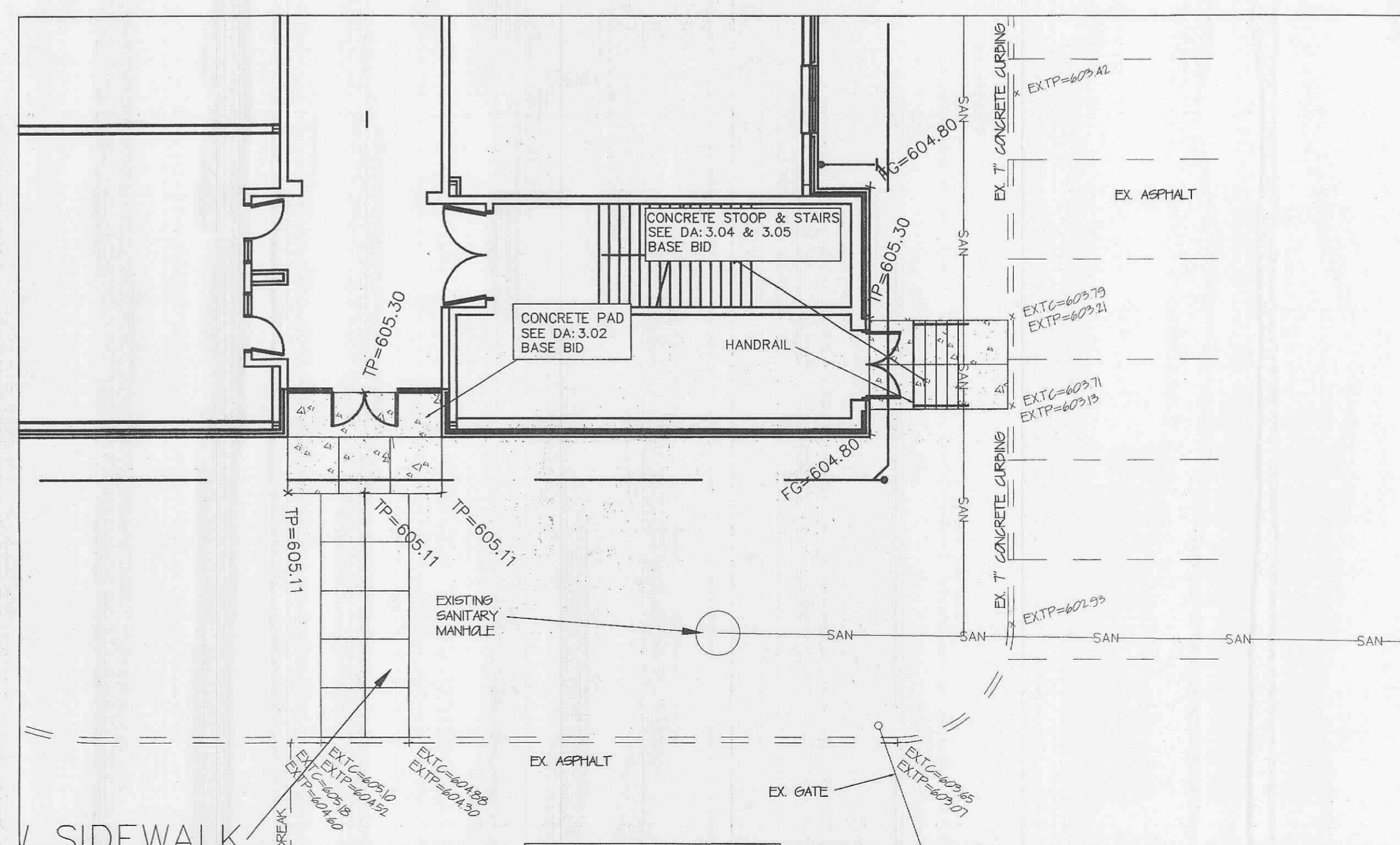


ENTRY DETAIL NORTHEAST ADDITION BID ALTERNATE #1  
SCALE: 1"=10'

TS=TOP OF STEP  
TP=TOP OF PAVEMENT

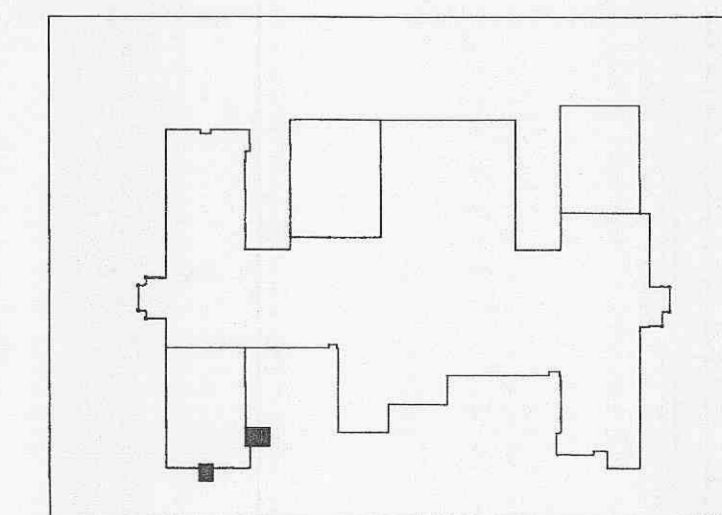


BUILDING KEY



ENTRY DETAIL SOUTHWEST ADDITION BASE BID  
SCALE: 1"=10'

TS=TOP OF STEP  
TP=TOP OF PAVEMENT



BUILDING KEY

