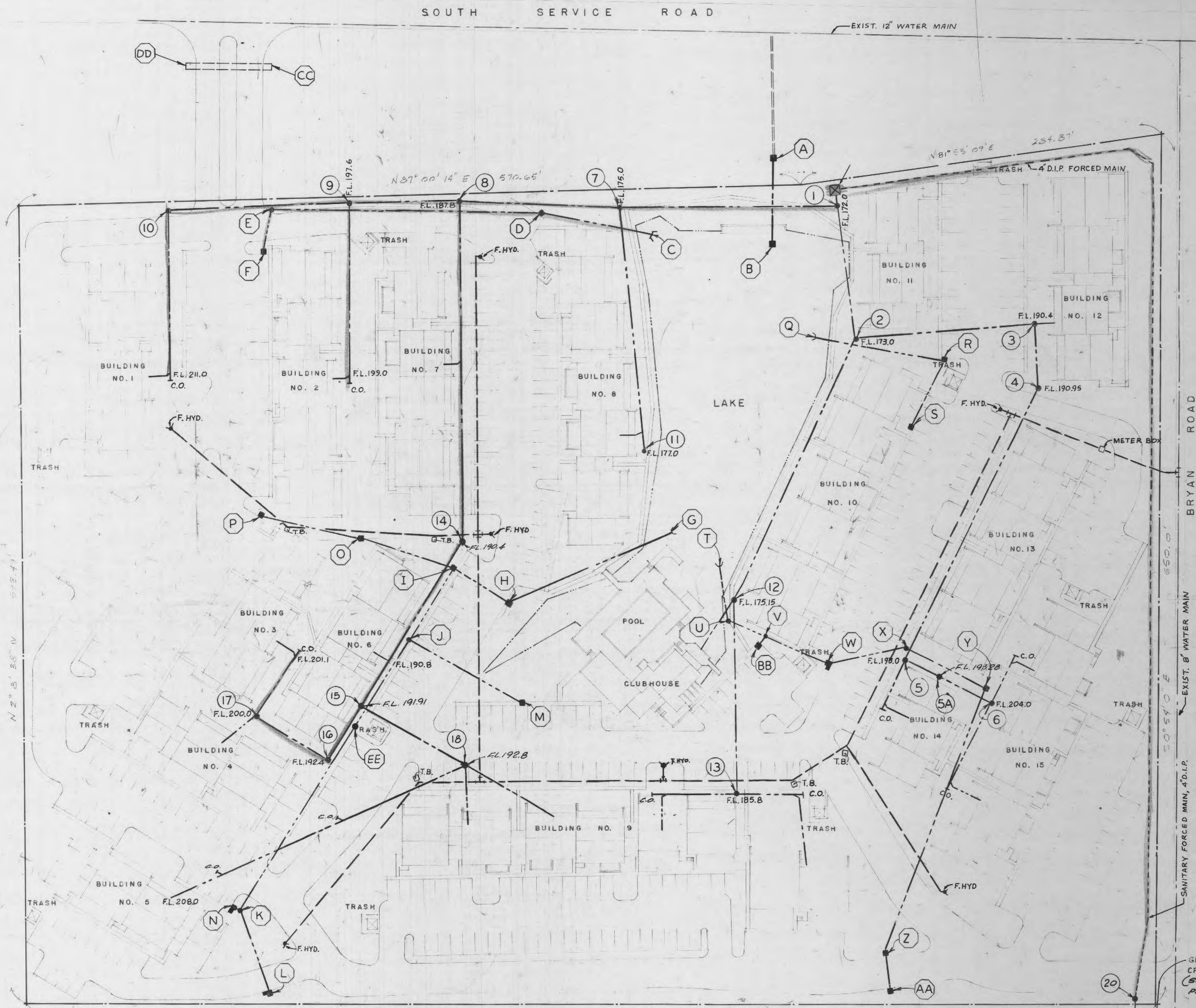


**LEGEND**

- PROPOSED 6" P.V.C. (CLASS 200) WATER LINE
- EXISTING WATER LINE
- PROPOSED SANITARY FORCED MAIN
- PROPOSED 8" P.V.C. (SDR35) SANITARY GRAVITY LINE
- PROPOSED SANITARY PUMP STATION
- PROPOSED STORM SEWER
- THRUST BLOCK

**NOTES:**

1. GRAVITY SANITARY LINE TO BE 8" P.V.C. (SDR35) @ 1% MINIMUM SLOPE. INSTALL PER CITY OF O'FALLON MISSOURI STANDARDS.
2. WATER LINE TO BE 6" P.V.C. (CLASS 200)



**SITE PLAN**  
SCALE 1" = 40'

REVISIONS WATER LINE LOCATION SOUTH

|   |  |
|---|--|
| 5 |  |
| 6 |  |
| 7 |  |
| 8 |  |

|                |                |
|----------------|----------------|
| <b>DRAWN</b>   | <b>JOB NO.</b> |
| AP             | 8302.00        |
| <b>TRACED</b>  | <b>DATE</b>    |
| Jan 84         |                |
| <b>CHECKED</b> | <b>SCALE</b>   |
| BW             | 1" = 40'       |



**IKW / WARDLAW ASSOCIATES**

ARCHITECTS · ENGINEERS · PLANNERS  
6 WESTBURY DR. ST. CHARLES MISSOURI



**WESTCHESTER APARTMENT VILLAGE**  
O'Fallon, Missouri

DEVELOPED BY THE WESTCHESTER PARTNERSHIP

SITE PLAN WATER SY

DRAWING NO. 1302