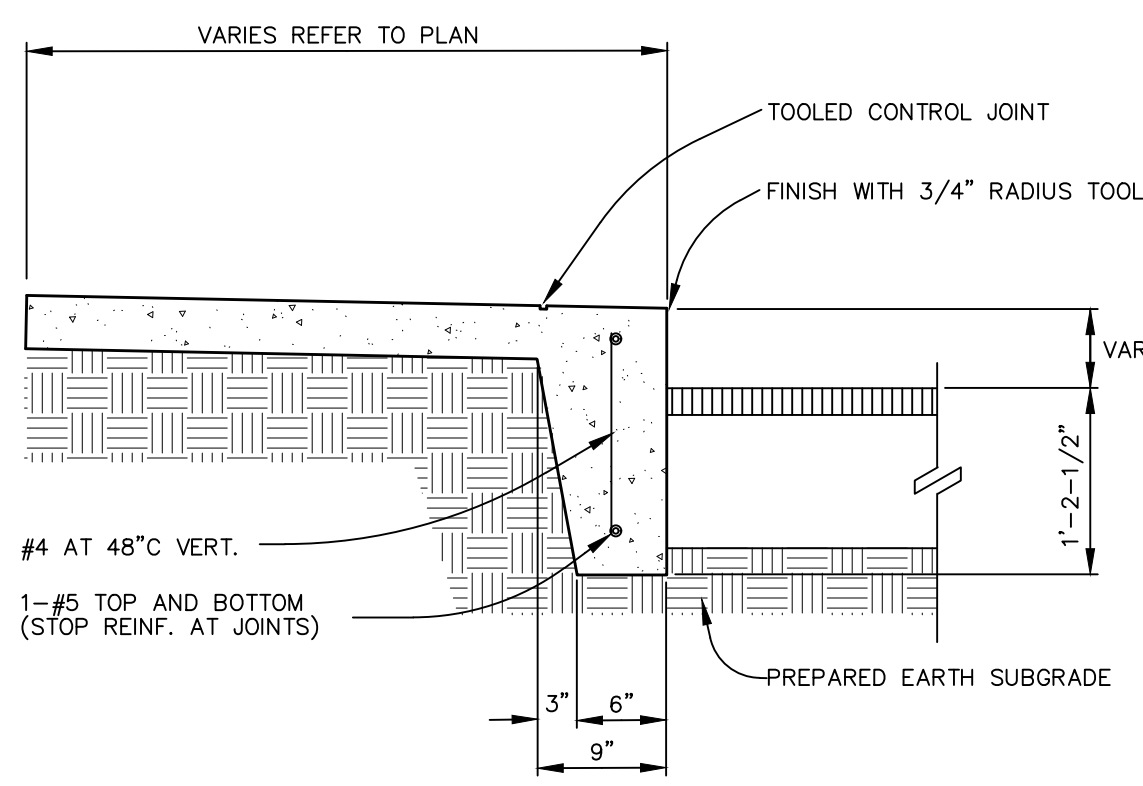
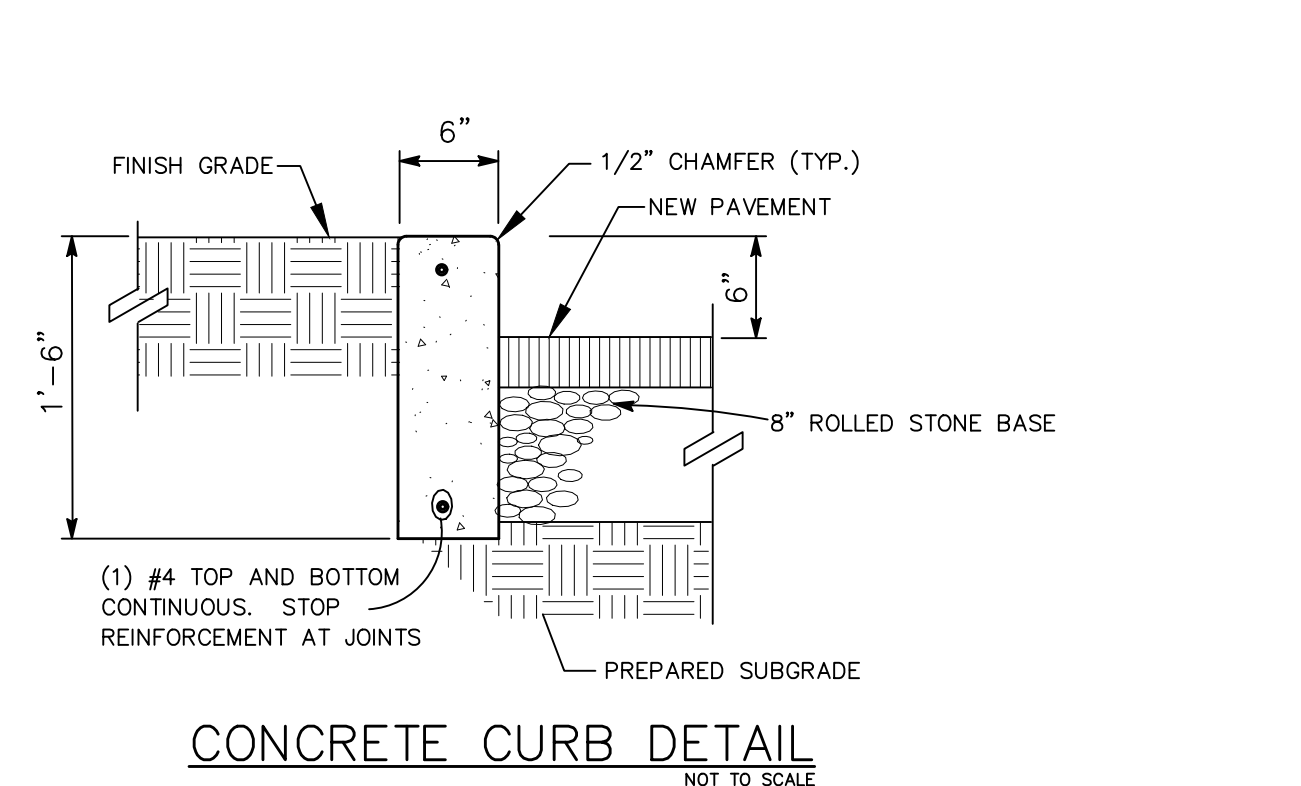


**NOTE:**  
SIGN POSTS AND BACKS TO BE PROPERLY PAINTED BLACK AND ADA STRIPING TO BE PAINTED BLUE.

**NOTE:**  
ALL NON-REINFORCED CONCRETE SHALL BE 4,000 P.S.I. AT 28 DAYS.



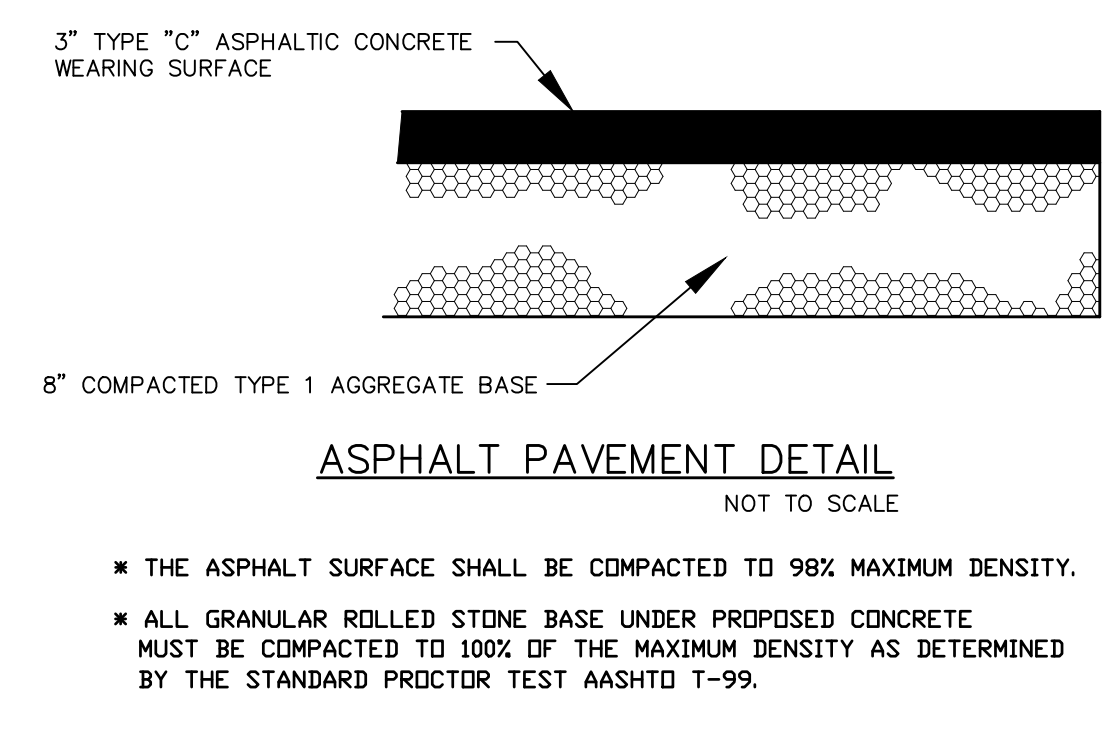
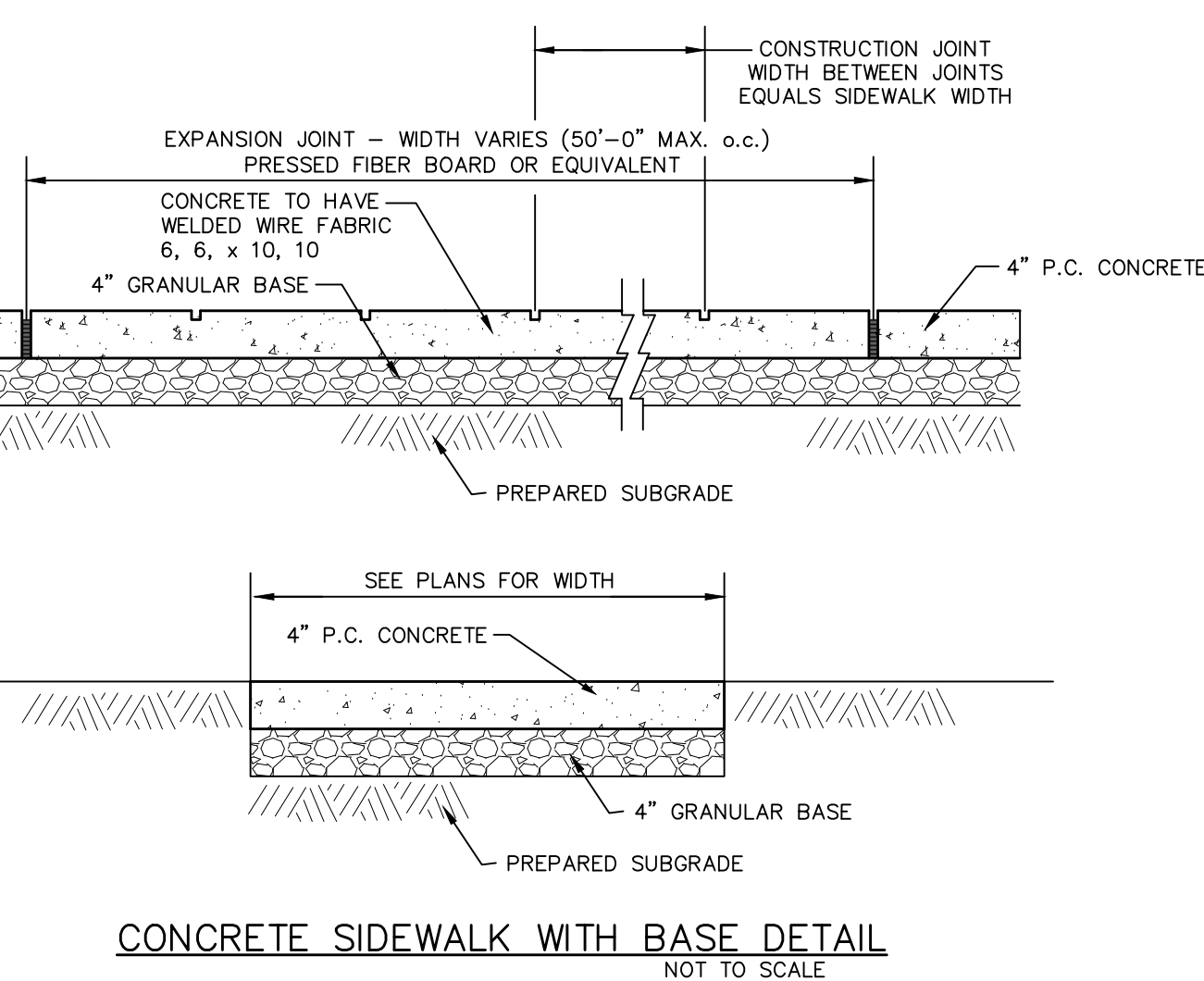
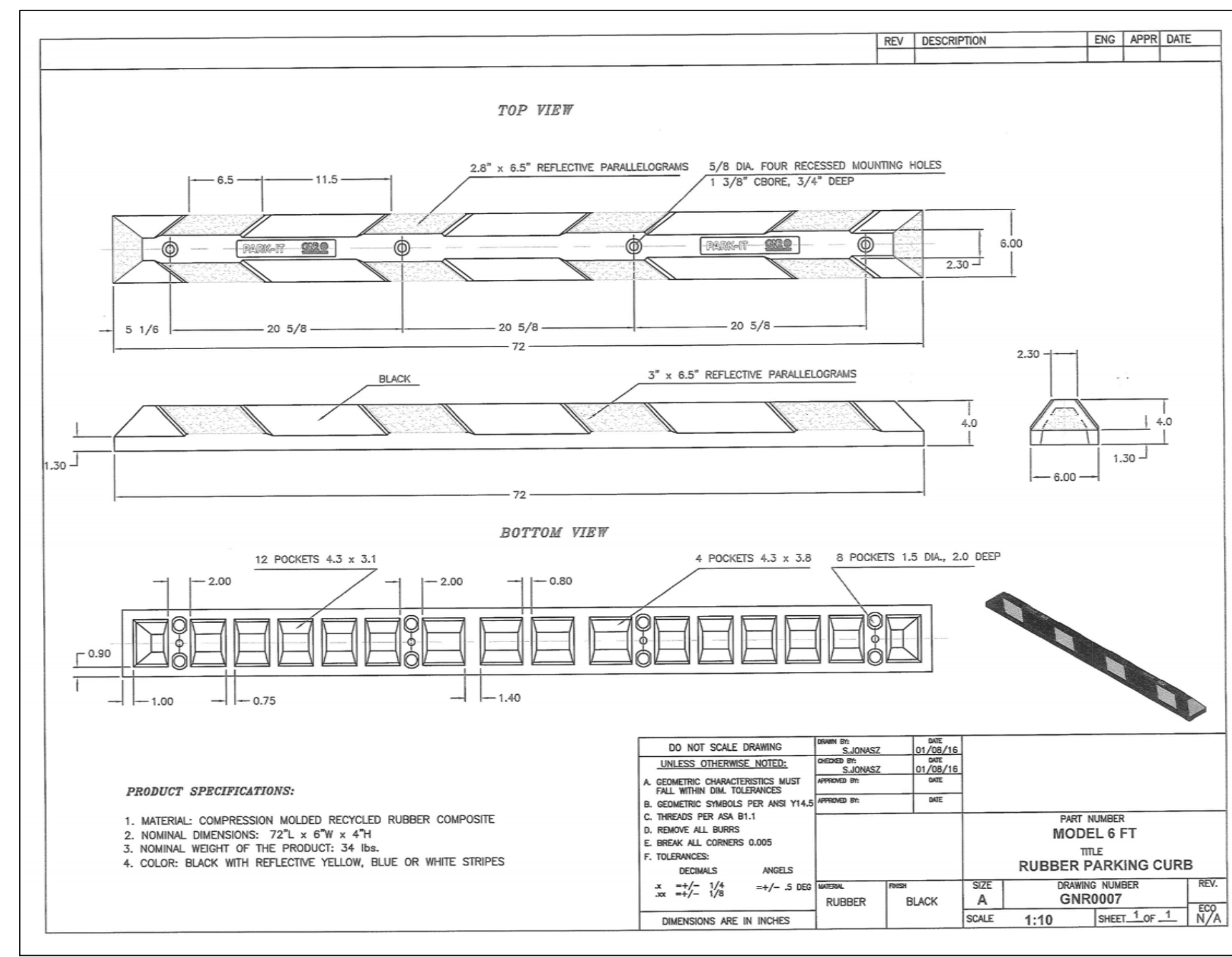
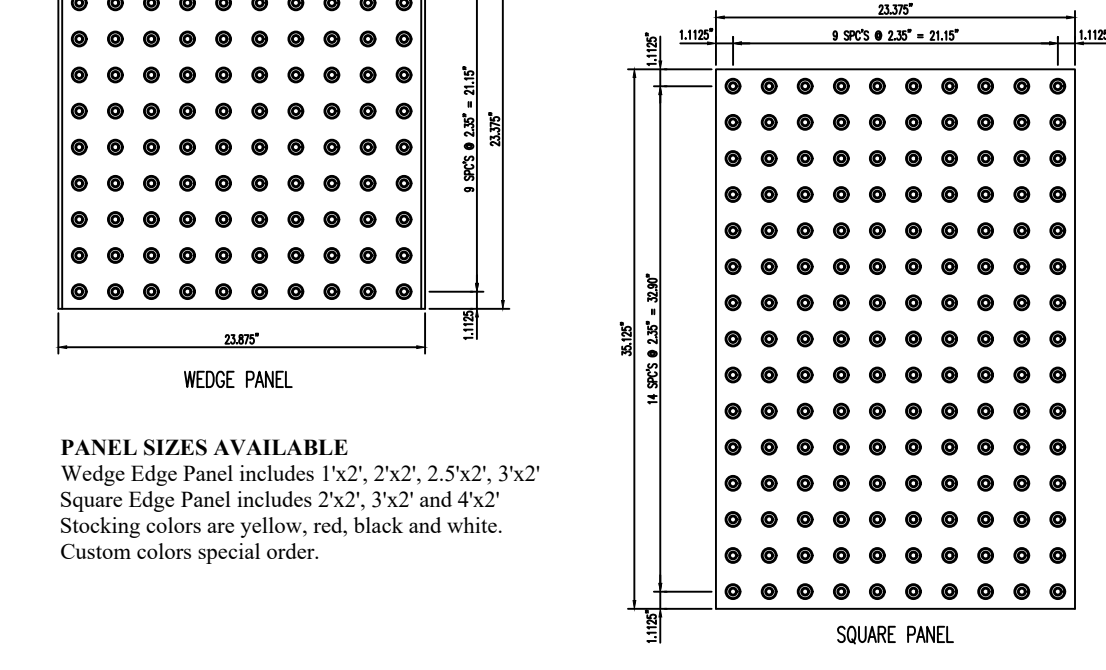
CASTtoTACT™ Warning Panels are the latest innovation in detectable warning systems. A long term solution meeting both state and federal guidelines for handicap detection. CASTtoTACT Warning Panels are designed for exterior use at the bottom of curb ramps and other locations such as depressed corners, raised crosswalks and raised intersections, borders of median and islands, at edge of transit platforms and where railroad tracks cross the sidewalk to warn people with visual impairments of potential hazards. Detectable warnings must be installed across the full width of ramps, and 24" minimum in length up the ramp. CASTtoTACT Warning Panels are integrally colored to provide visual contrast with the adjacent walking surface.

CASTtoTACT™ are cementitious based concrete panels with the same coefficient of expansion as the concrete base. 7/8" thick high strength concrete reinforced with stainless steel prestress strands resulting in a high strength and crack resistant panel. Abrasion resistant truncated domes are achieved with an engineered mix design of granite and quartz aggregate that produces an average compressive strength of 10,000 psi (69 MPa). CASTtoTACT are quality controlled manufactured to produce a dense, freeze thaw durable panel. Architectural concrete finished for safe wet and dry slip resistance. Concrete surfaces are easily maintained and cleaned with pressure washing.

**DOMES SPECIFICATIONS**  
Americans with Disabilities Act 4.29.2 Standards  
Dome Base = 0.9" (23 mm)  
Dome Top = 0.45" (12 mm)  
Dome Height = 0.2" (5 mm)  
Dome Spacing (P) = 2.35" (60 mm)  
Dome Diag. Spacing (D) = 3.32" (85 mm)  
Avg. Panel PSI = 10,000 (69 MPa) ASTM C39  
Reinforcement = 304 Stainless Steel 1/16" 7x7 4" OC both directions and faces.

**PANEL SPECIFICATION**  
Panel Thickness = 0.875" (22 mm)  
Final prestress forces after loss, 300 lbs per Tendon, net panel prestress force 172 psi in both Directions.  
Slip Resistance = 0.80 ASTM D 2047 Modified

**PANEL SIZES AVAILABLE**  
Wedge Panel includes 1'x2', 2'x2', 2.5'x2', 3'x2'  
Square Edge Panel includes 2'x2', 3'x2' and 4'x2'  
Stocking colors are yellow, red, black and white. Custom colors special order.



UNDERGROUND UTILITIES HAVE BEEN PLOTTED FROM AVAILABLE INFORMATION AND THEREFORE THEIR LOCATIONS SHALL BE CONSIDERED APPROXIMATE ONLY. THE VERIFICATION OF THE LOCATION OF ALL UNDERGROUND UTILITIES, EITHER SHOWN OR NOT SHOWN ON THESE PLANS SHALL BE THE RESPONSIBILITY OF THE CONTRACTOR, AND SHALL BE LOCATED PRIOR TO ANY GRADING OR CONSTRUCTION OF THE IMPROVEMENTS.

**PROJECT TITLE:**  
MIKE CLEMENS  
CENTER FOR  
ADAPTIVE LEARNING  
ADDITION

**ENGINEERING  
PLANNING  
SURVEYING**  
221 Point View Blvd.  
St. Charles, MO 63301  
636-928-5562  
FAX 928-1718

**DISCLAIMER OF RESPONSIBILITY**  
I hereby specify that the documents intended to be authorized by my seal are limited to this sheet, and I hereby disclaim any responsibility for all other drawings, specifications, estimates, reports or other documents or instruments relating to or intended to be used for any part or parts of the architectural or engineering project.

**STATE OF MISSOURI**  
CLIFFORD HEITMANN  
REGISTERED PROFESSIONAL ENGINEER  
NUMBER E-29817

Copyright 2023  
Box Engineering Company, Inc.  
Engineering Authority No. 000655  
Surveying Authority No. 000144  
All Rights Reserved

ORIGINAL ISSUE DATE  
01-18-2023

**REVISIONS**

DATE	DESCRIPTION
01-10-2023	PERMIT SET
01-18-2023	BID SET
02-10-2023	ADDENDUM 2
02-14-2023	CITY COMMENTS
02-24-2023	ADDENDUM 4
02-28-2023	CITY COMMENTS

**Developer / Owner:**  
FORT ZUMWALT SCHOOL DISTRICT  
555 EAST TERRA LANE  
O'FALLON, MO 63366

**P+Z No.**  
#22-010172  
APPROVED 11-03-22

**City No.**  
#14-400

**Page No.**  
C10.0  
MIKE CLEMENS CENTER  
ADDITIONS AND RENOVATIONS

**BID SET**

**DETAILS**

Box Project # 99-1000T Issue Date: 01/18/2023