

EGGERING

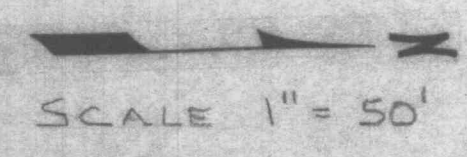
ST PATRICK

ST JOHN

ST. MATTHEW

PRINCE RUPPERT

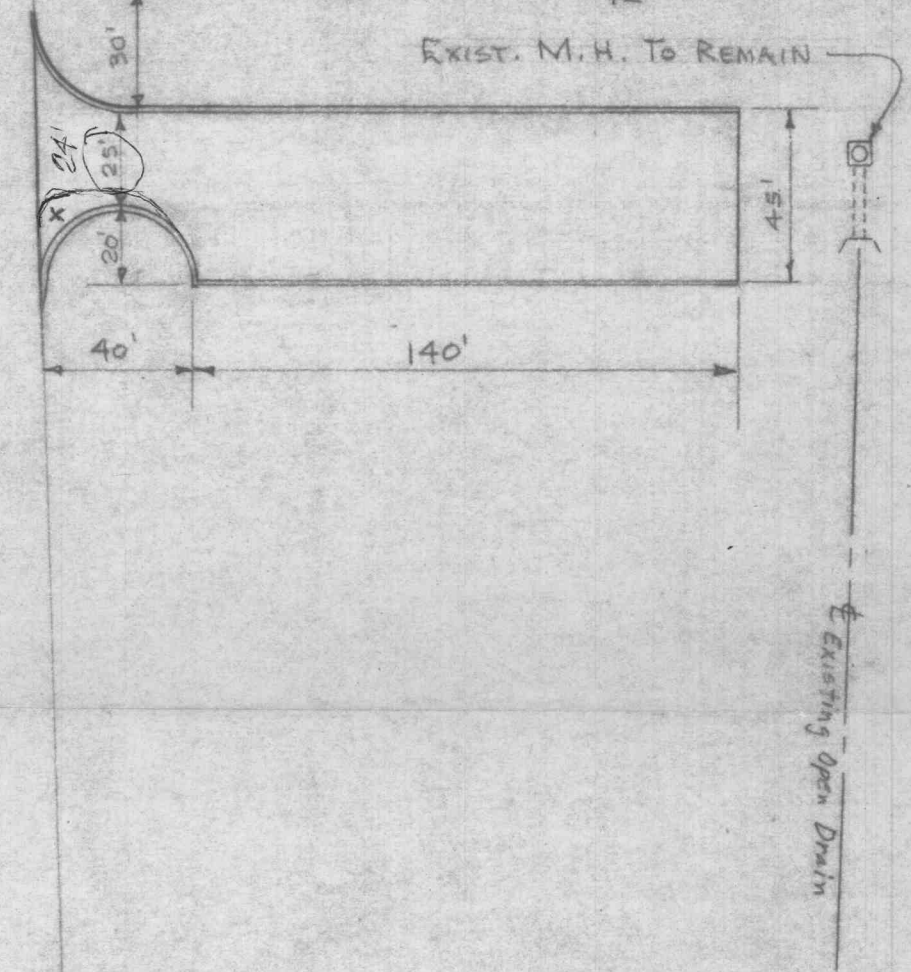
J. L. MUDD SCHOOL



NOTE: LAMPPOST LOCATION
E, FROM BACK P, 56.40'
N, " PARK DR, 4.15'

~ NOTES ~

- 1. EXCAVATE TO LINES SHOWN ON DRAWING.
- 2. SCARIFY, COMPACT & SHAPE SUBGRADE
- 3. APPLY 4" LAYER OF ROCK APPROVED BY PROJECT COORDINATOR AND ROLL UNTIL SUBGRADE IS STABLE AND APPROVED BY COORDINATOR.



PAUL A. WESTHOFF SR.
MEMORIAL PARK
CITY OF O'FALLON, MISSOURI
ADDITIONAL PARKING

DWG. No. 580-01

DESIGNED: P.S. 5/1/80	APPROVED: R.L. Ward
DRAWN: P.S. 5/2/80	APPROVED: D. Bickel