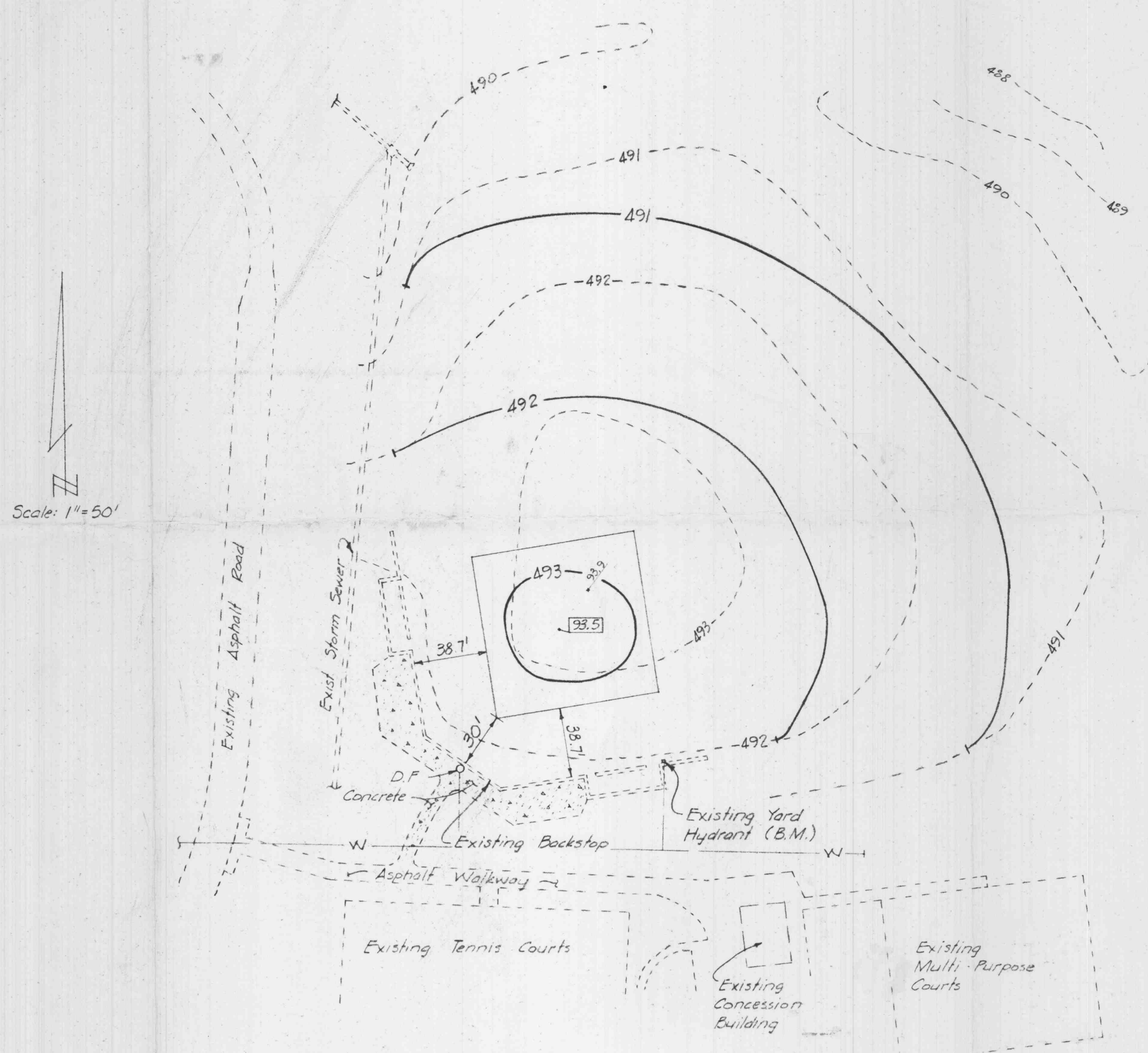


- GENERAL NOTES:**
1. Contour Interval = 1'
  2. Location of existing utilities shown is approximate. Contractor shall field verify location & size prior to start of construction.
  3. All improvements to be done in accordance with specifications for Paul A Westhoff, Sr. Memorial Park - Contract Number 2.
  4. Excavated material to be disposed of on site at locations designated by Owner.
  5. Underground pipes are to remain undisturbed.
  6. All disturbed areas shall be seeded.



**BENCH MARK:**  
Top of existing yard hydrant. B.M. Elev 492.00

**LEGEND**

---492---	Existing Contour
93.5	Existing Elevation
—W—	Existing Water Line
—S—	Existing Storm Drainage Pipe & Structure
-492-	Proposed Contour
93.0	Proposed Elevation
D.F.	Existing Drinking Fountain

 <b>GEORGE BUTLER ASSOCIATES</b> CONSULTING ENGINEERS / LANDSCAPE ARCHITECTS / PLANNERS			
<small>SUITE 600, THE HANOVER BUILDING, 15 WEST 10TH STREET - KANSAS CITY, MISSOURI 64105      SUITE 355A, LAMARWAY OFFICE CENTER, 4210 JOHNSON DRIVE, SHAWNEE, MISSOURI, KANSAS 66205</small>			
<b>GRADING IMPROVEMENTS</b> AT <b>WESTHOFF PARK</b> IN <b>O'FALLON, MISSOURI</b>			JOB NO. 77-1276 DATE 3-1-77 SCALE 1"=50' SHEET NO. 1 OF 1
DESIGNED BY: DLH	DRAWN BY: DLH	CHECKED BY: DLH	