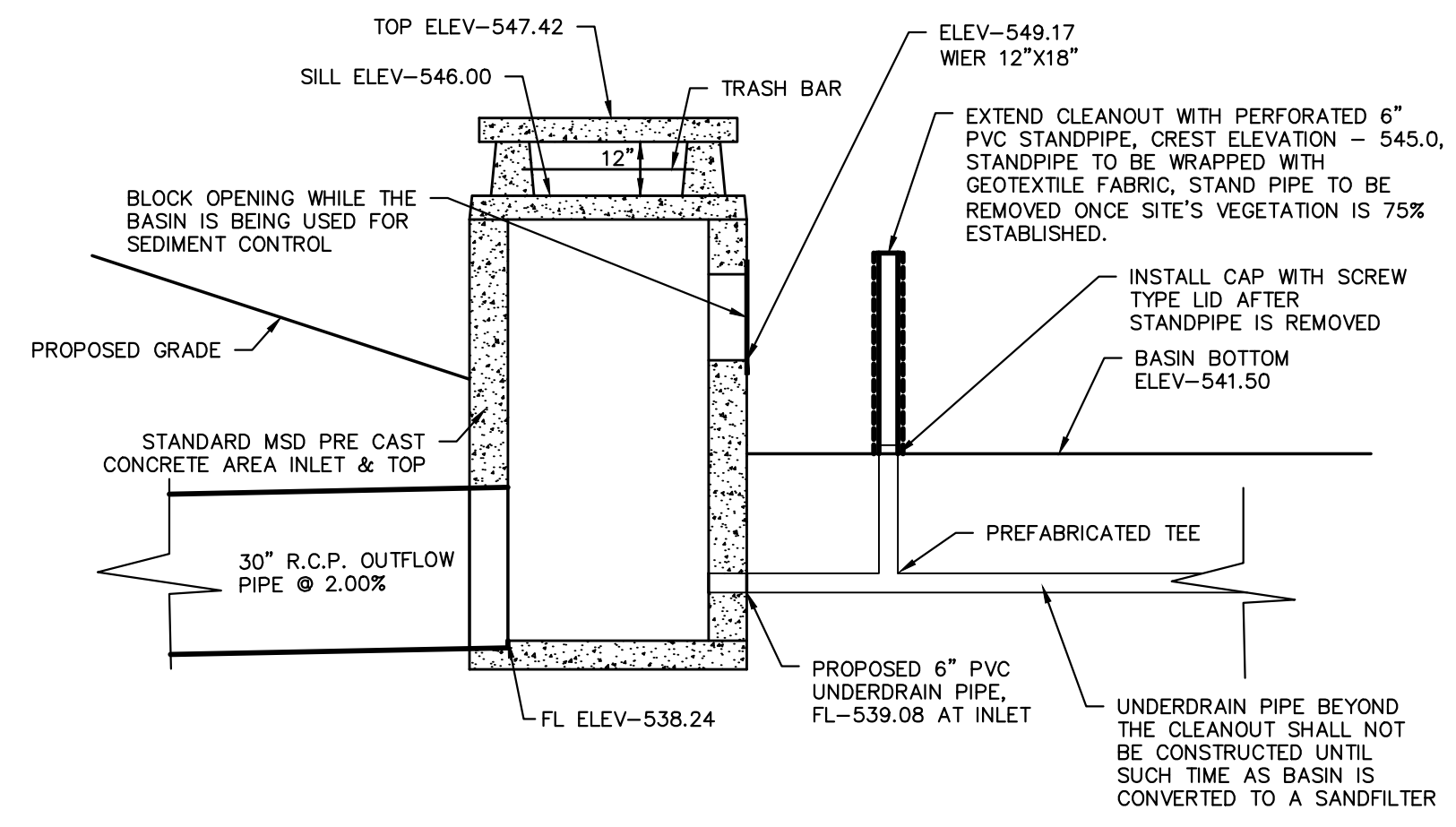
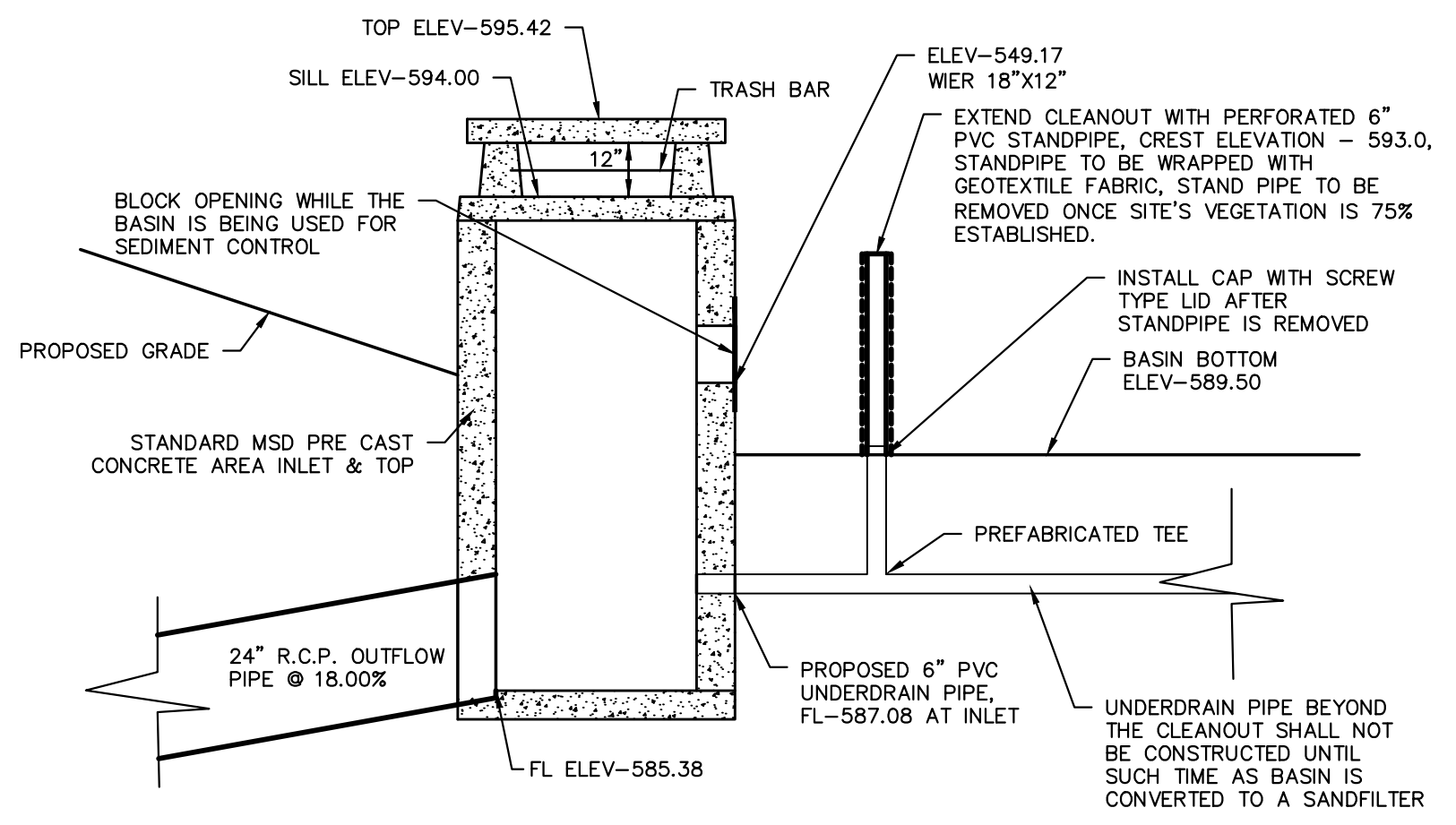


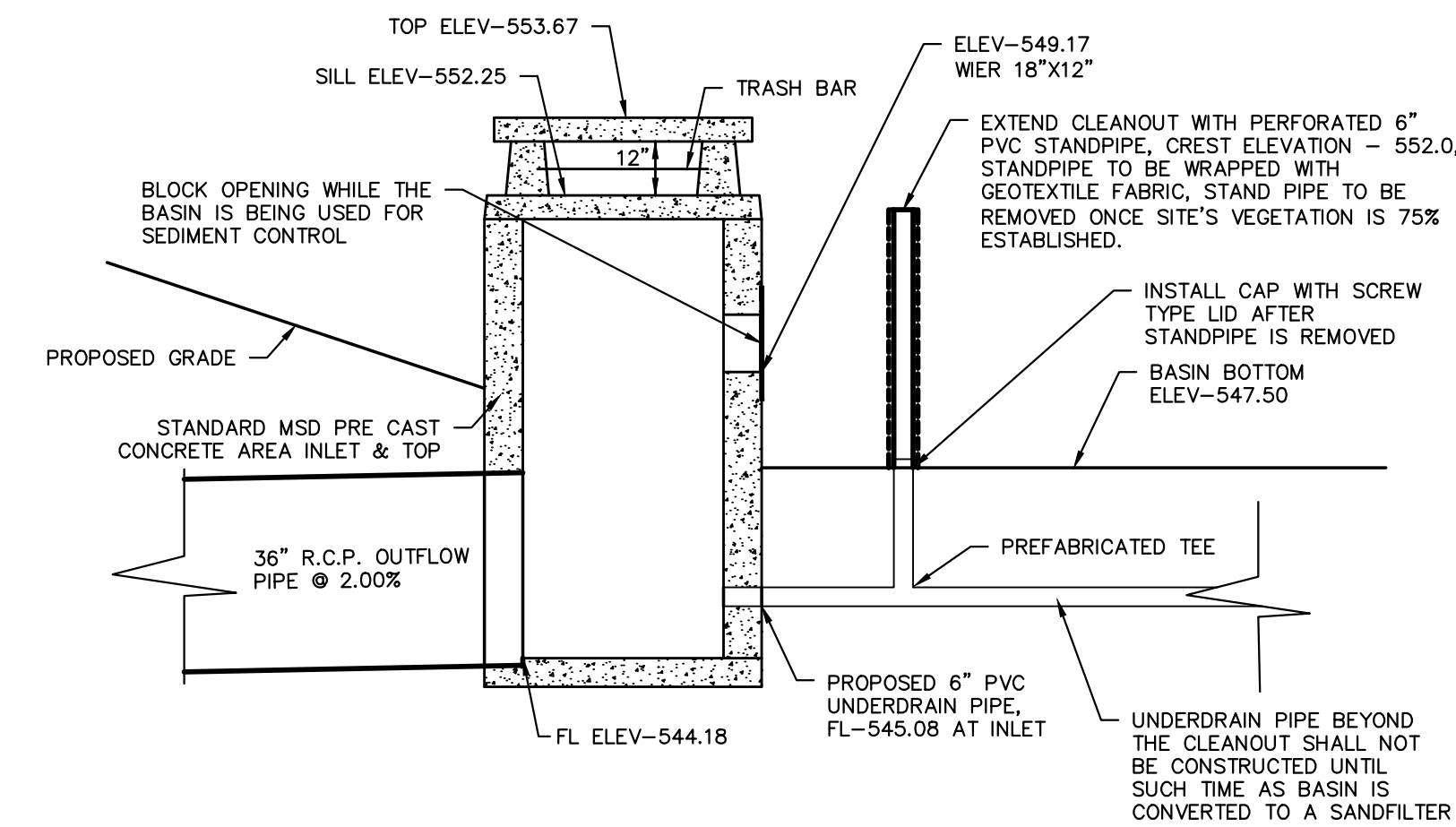
ISSUE	DATE / REMARKS
1	8-10-2016 Initial Submittal
2	9-1-2016 PWS# #2 & DCSD Comments
3	10-24-16 City Comments
4	11-15-16 DCSD Comments
5	12-12-16 City Comments
6	12-28-16 DCSD Comments
7	1-18-17 PWS# #2 Comments
8	1-26-17 Fire District Comments
9	1-27-17 City Comments
10	3-1-17 City Comments



OUTFALL STRUCTURE 101 SIDE SECTION MODIFIED FOR SEDIMENT CONTROL TEMPORARY SEDIMENT BASIN A
NTS



OUTFALL STRUCTURE 204 SIDE SECTION MODIFIED FOR SEDIMENT CONTROL TEMPORARY SEDIMENT BASIN B
NTS



OUTFALL STRUCTURE 301 SIDE SECTION MODIFIED FOR SEDIMENT CONTROL TEMPORARY SEDIMENT BASIN C
NTS

PROJECT TITLE

WESTLEIGH

OFFALON, MISSOURI

THE STERLING CO.
ENGINEERS & SURVEYORS
5055 New Baumgartner Road
St. Louis, Missouri 63129
Ph 314-487-0440 Fax 314-487-8944
www.sterling-eng-sur.com
Corporate Certificate of Authority #001348



Date: 3/01/2017
RODNEY ARNOLD
LICENSE # PE-2002016612
Civil Engineer

Lombardo Homes of St. Louis, LLC
2299 Technology Drive, Suite 150
Offalon, Missouri 63366
Ph: (636) 265-2710
Fax: (636) 695-3195
www.lombardohomesstlouis.com

SWPPP DETAILS

P+Z No. P&Z NO
City No. 15-162-SP
Date: 3/01/2017
Job No. 14-10-348

Page No.

2.7

IMP