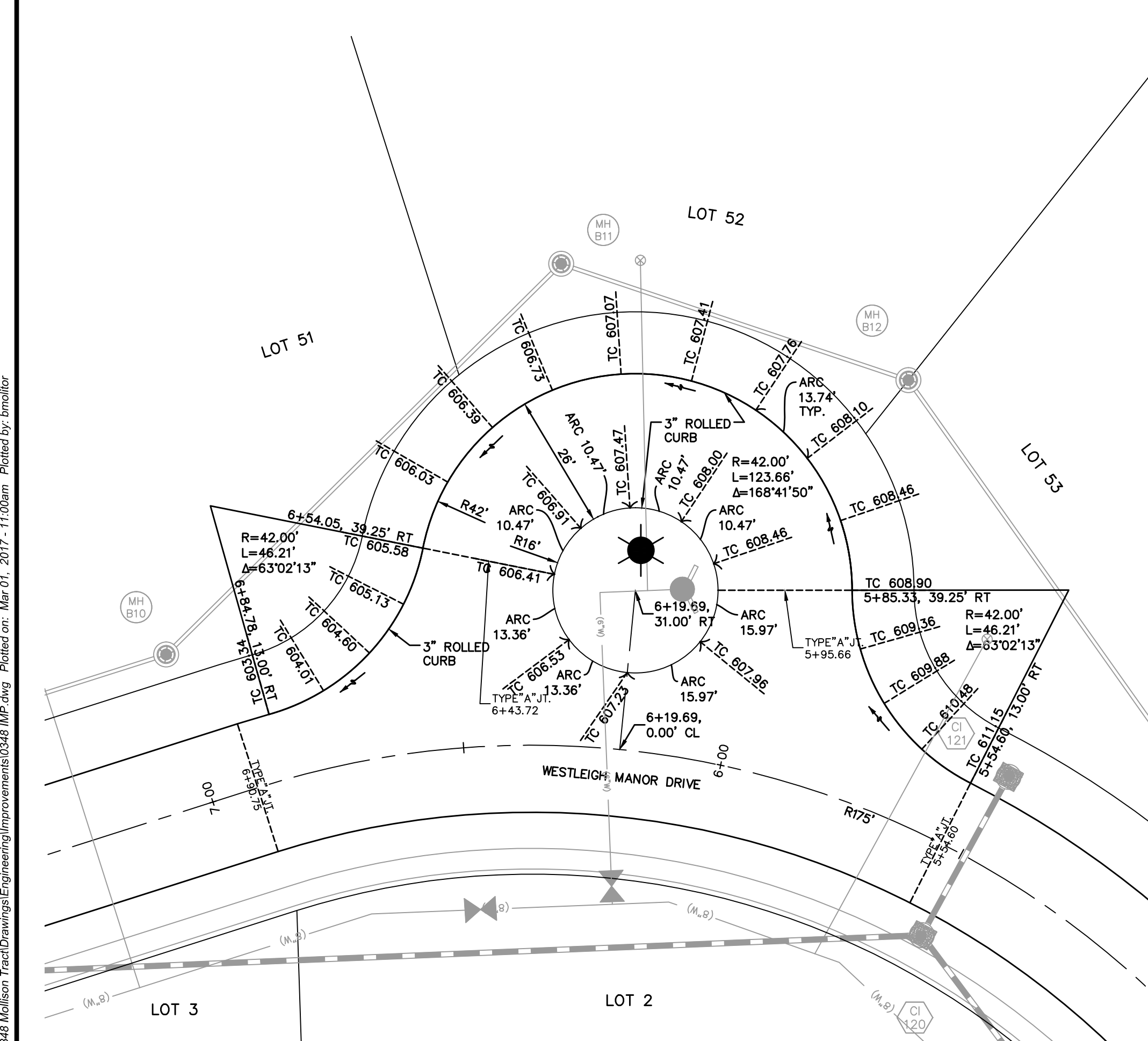
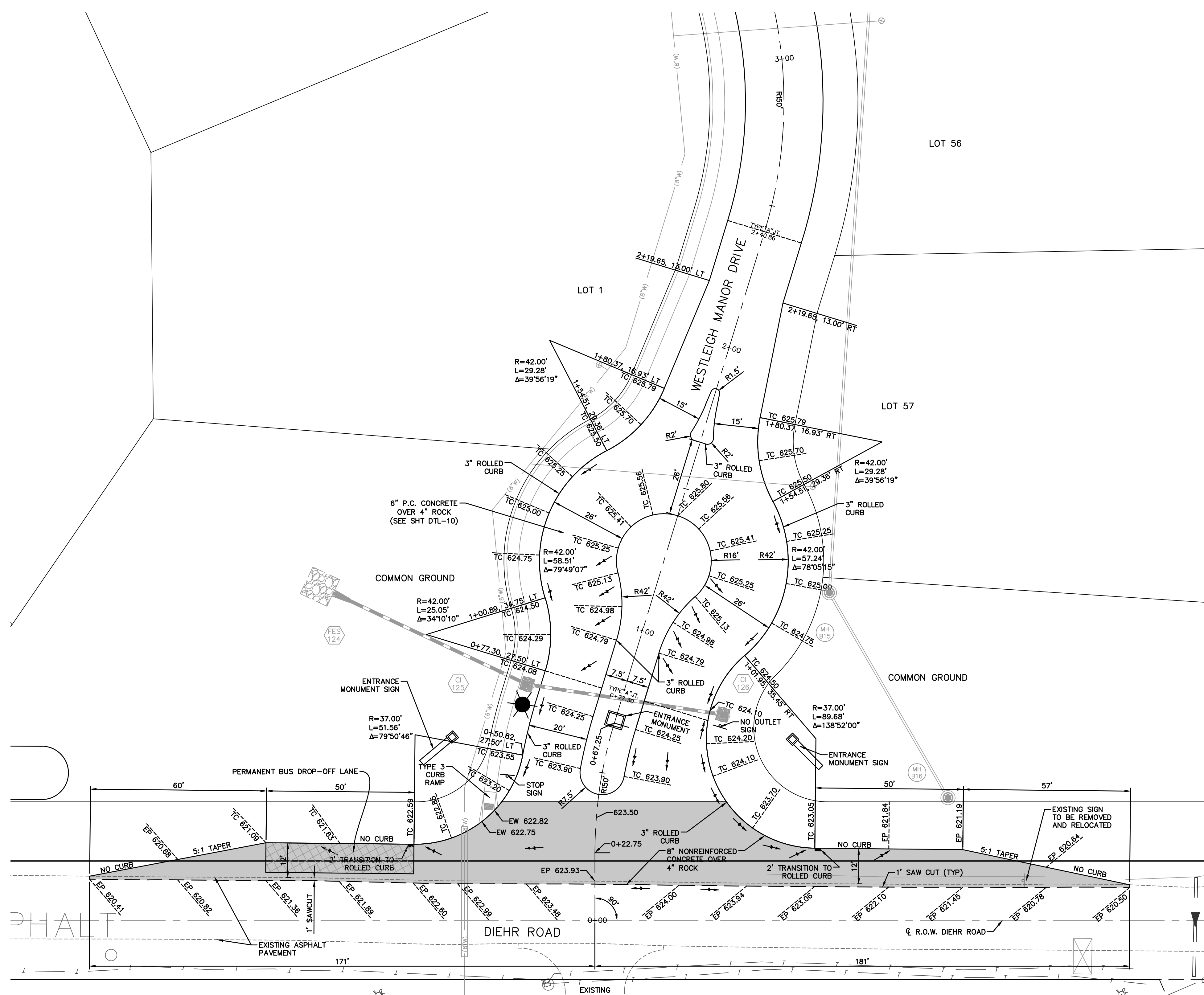


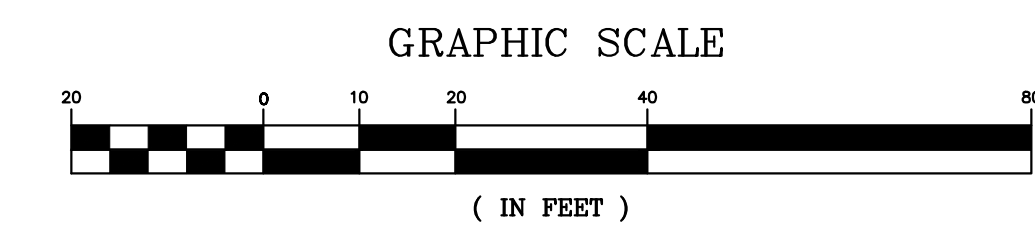
INTERSECTION DETAIL  
SCALE: 1"=20'



INTERSECTION DETAIL  
SCALE: 1"=20'



INTERSECTION DETAIL  
SCALE: 1"=20'



ISSUE	DATE / REMARKS
1	8-10-2016 Initial Submittal
2	9-1-2016 PWSD #2 & DCSD Comments
3	10-24-16 City Comments
4	11-15-16 DCSD Comments
5	12-12-16 City Comments
6	12-28-16 DCSD Comments
7	1-18-17 PWSD #2 Comments
8	1-26-17 Fire District Comments
9	1-27-17 City Comments
10	3-1-17 City Comments

PROJECT TITLE

**WESTLEIGH**

OFFALLON, MISSOURI

**THE STERLING CO.**  
ENGINEERS & SURVEYORS  
5055 New Baumgartner Road  
St. Louis, Missouri 63129  
Ph 314-487-0440 Fax 314-487-8944  
www.sterling-eng-sur.com  
Corporate Certificate of Authority #001348



Date: 3/01/2017  
RODNEY ARNOLD  
LICENSE # PE-2002016612  
Civil Engineer

**Lombardo Homes of St. Louis, LLC**  
2299 Technology Drive, Suite 150  
O'Fallon, Missouri 63366  
Ph. (636) 265-2710  
Fax (636) 695-3195  
www.lombardohomesstlouis.com

P+Z No. P&Z NO  
City No. 15-162-SP  
Date: 3/01/2017  
Job No. 14-10-348

Page No.  
**12.1**

WARPING DETAILS

IMP