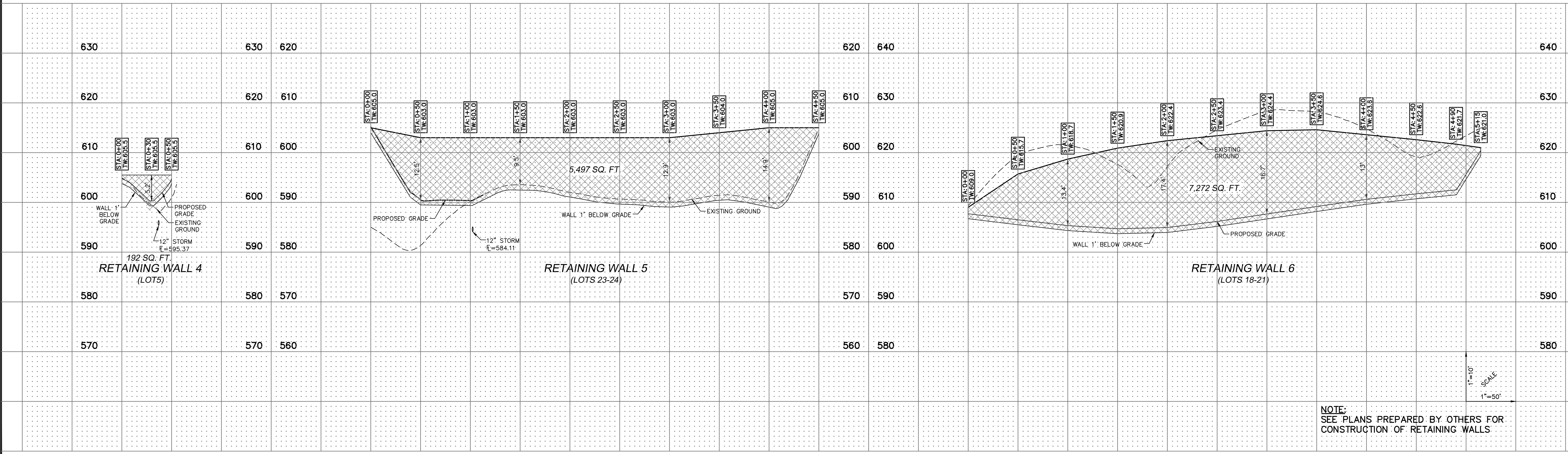
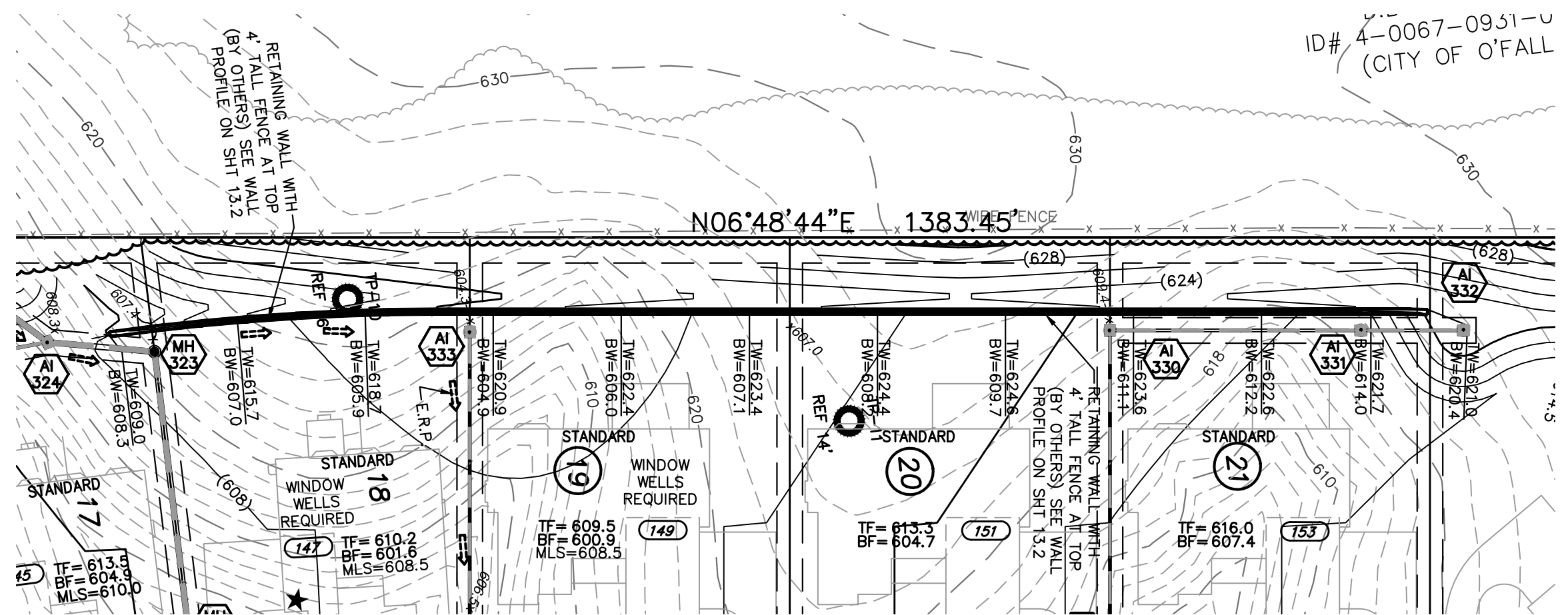
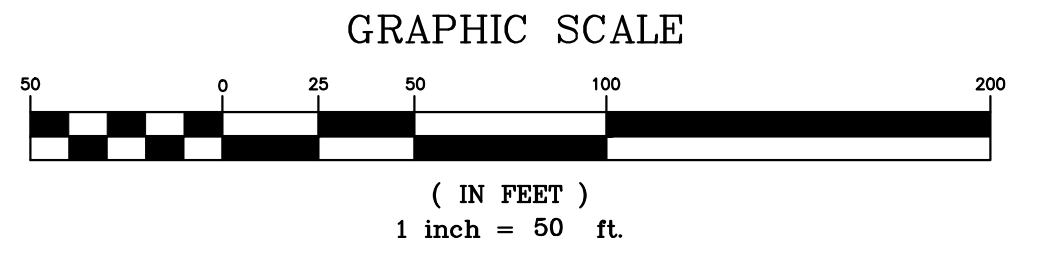


ISSUE	DATE / REMARKS
1	8-10-2016 Initial Submittal
2	9-1-2016 PWSO #2 & DCSO Comments
3	10-24-16 City Comments
4	11-15-16 DCSO Comments
5	12-15-16 City Comments
6	12-28-16 DCSO Comments
7	1-18-17 PWSO #2 Comments
8	1-26-17 Fire District Comments
9	1-27-17 City Comments
10	3-1-17 City Comments

No.	Item	Material	Quantity	DESCRIPTION
4	Wedge Lock	Super Tuff Nylon	30	
5	5/8\" Picket (94005)	6063-T52	15	
6	U Channel (94052R1)	6063-T6	1	
7	U Channel (94063)	6063-T6	1	

COLONIAL FENCE - UNIVERSAL 2 RAIL FB
NOM 6' SECTION LENGTH - 5/8\" PICKET



PROJECT TITLE

WESTLEIGH

OFALLON, MISSOURI

THE STERLING CO.
ENGINEERS & SURVEYORS
5055 New Baumgartner Road
St. Louis, Missouri 63129
Ph 314-487-0440 Fax 314-487-8944
www.sterling-eng-sur.com
Corporate Certificate of Authority #001348



Date: 3/01/2017
RODNEY ARNOLD
LICENSE # PE-2002016612
Civil Engineer

Lombardo Homes of St. Louis, LLC
2299 Technology Drive, Suite 150
O'Fallon, Missouri 63366
Ph: (636) 265-2710
Fax: (636) 695-3195
www.lombardohomesstlouis.com

RETAINING WALL PLAN & PROFILE

P+Z No. P&Z NO
City No. 15-162-SP
Date: 3/01/2017
Job No. 14-10-348

Page No.

13.2

IMP

NOTE:
SEE PLANS PREPARED BY OTHERS FOR
CONSTRUCTION OF RETAINING WALLS

1"=10'
1"=50'