

Chapter 402. Trees and Landscaping

Article IV. Minimum Tree Quantities and Location Requirements

Section 402.130. Tree Location Standards.

[Ord. No. 5752 §, 12-8-2011]

- A. Trees are required to meet this Section if located along a roadway or utility line subject to the following:
- Trees shall not be placed within twenty-five (25) feet of any street right or within fifteen (15) feet of the back of curb unless otherwise provided in this Code.
 - Trees shall not be placed within twenty-five (25) feet of traffic control or street signs or within fifteen (15) feet of the back of curb unless otherwise provided in this Code.
 - Trees shall not be planted within ten (10) feet of street stormwater inlets or manholes.
 - All new trees within the City right-of-way must be an acceptable species as outlined in this Chapter. All other trees to be installed are recommended, not required, to follow the recommended species list outlined in this Chapter.
 - Trees may not be planted closer to the centerline of an overhead power line as listed below:

Maximum Mature Tree Height (Feet)	Minimum Distance From Centerline (Feet)
<15	No minimum
15-24	15
25-34	25
35-45	35
>45	45
 - To reduce potential damage to sidewalks the City recommends the following setbacks:

Maximum Mature Tree Height (Feet)	Minimum Distance From Sidewalk (Feet)
<15	5
15-25	10
26-45	15
46	20
- B. Tree standards in common ground or on private property:
- Recommended (not required) tree species are outlined in this Chapter.
 - It is not recommended to have a tree located within an easement since it could be removed in the future with no replacement costs provided.
 - Tree location standards as provided in this Chapter shall be followed.

SIGHT DISTANCE NOTE:
ON A CORNER LOT, NOTHING SHALL BE ERRECTED, PLACED, PLANTED OR ALLOWED TO GROW IN SUCH A MANNER AS TO MATERIALLY IMPEDE VISION BETWEEN A HEIGHT OF THREE (3) AND FIFTEEN (15) FEET ABOVE THE GRADES WITHIN THE SIGHT TRIANGLE AREA AS SHOWN ON THESE PLANS. ADDITIONALLY, NOTHING SHALL BE ERRECTED, PLACED, PLANTED OR ALLOWED TO GROW IN A MANNER TO MATERIALLY IMPEDE THE LINE OF SIGHT NECESSARY FOR SAFE TRAVEL ALONG PUBLIC ROADWAYS.

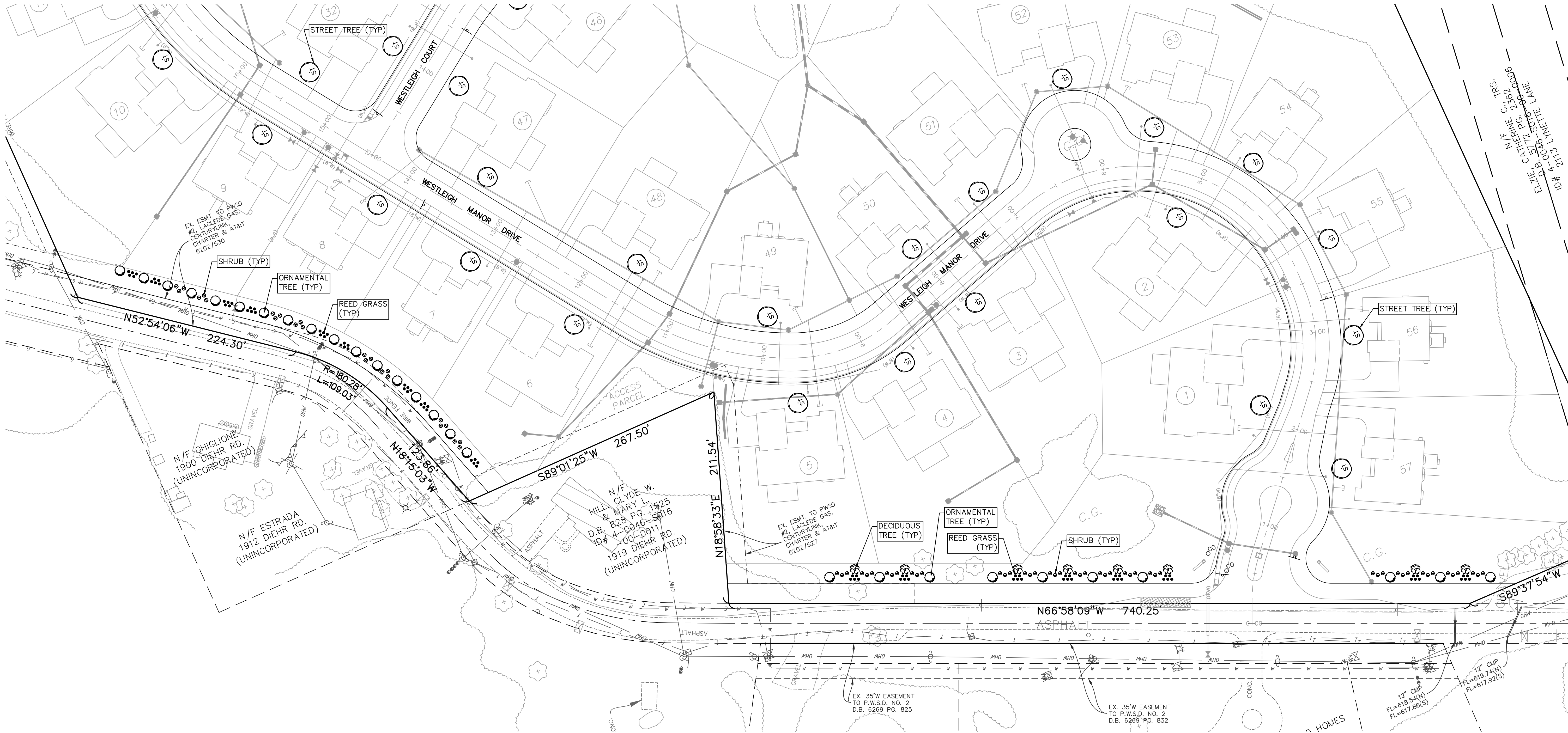
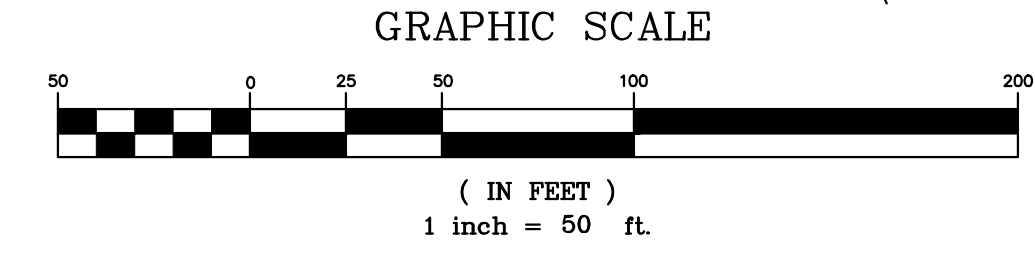
ISSUE	DATE / REMARKS
1	8-10-2016 Initial Submittal
2	9-1-2016 PWSO #2 & DCSD Comments
3	10-24-16 City Comments
4	11-15-16 DCSD Comments
5	12-12-16 City Comments
6	12-28-16 DCSD Comments
7	1-18-17 PWSO #2 Comments
8	1-26-17 Fire District Comments
9	1-27-17 City Comments
10	3-1-17 City Comments

LANDSCAPE BUFFER - PLANT MATERIAL LIST
DIEHR ROAD BUFFER BEHIND LOTS 6-9

SYM.	QTY.	DESCRIPTION	SIZE	MATURE HT.
●	45	KARL FOERSTER FEATHER REED GRASS	5 GALLON	N/A
○	17	ORNAMENTAL TREE CRAB, PEAR, REDBUD	1.5" CAL.	15'-25'
⊖	24	SHRUB VIBURNUM, BURNING BUSH	18" HT.	N/A

LANDSCAPE BUFFER - PLANT MATERIAL LIST
DIEHR ROAD BUFFER BEHIND LOTS 1-5 & 57

SYM.	QTY.	DESCRIPTION	SIZE	MATURE HT.
●	40	KARL FOERSTER FEATHER REED GRASS	5 GALLON	N/A
○	8	DECIDUOUS TREE MAPLE, OAK, BIRCH	2" CAL.	25'-45'
○	10	ORNAMENTAL TREE CRAB, PEAR, REDBUD	1.5" CAL.	15'-25'
⊖	48	SHRUB VIBURNUM, BURNING BUSH	18" HT.	N/A

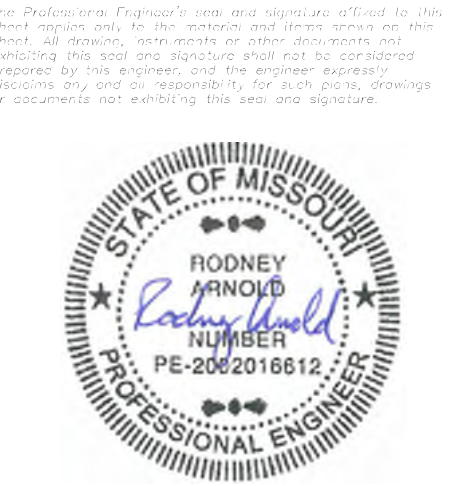


PROJECT TITLE

WESTLEIGH

OFFALON, MISSOURI

THE STERLING CO.
ENGINEERS & SURVEYORS
5055 New Baumgartner Road
St. Louis, Missouri 63129
Ph 314-487-0440 Fax 314-487-8944
www.sterling-eng-sur.com
Corporate Certificate of Authority #001348



Date: 3/01/2017
RODNEY ARNOLD
LICENSE # PE-2002016612
Civil Engineer

Lombardo Homes of St. Louis, LLC
2299 Technology Drive, Suite 150
Ofallon, Missouri 63366
Ph: (636) 265-2710
Fax: (636) 695-3195
www.lombardohomesstlouis.com

P+Z No. P&Z NO
City No. 15-162-SP
Date: 3/01/2017
Job No. 14-10-348

Page No.
15.2
IMP