

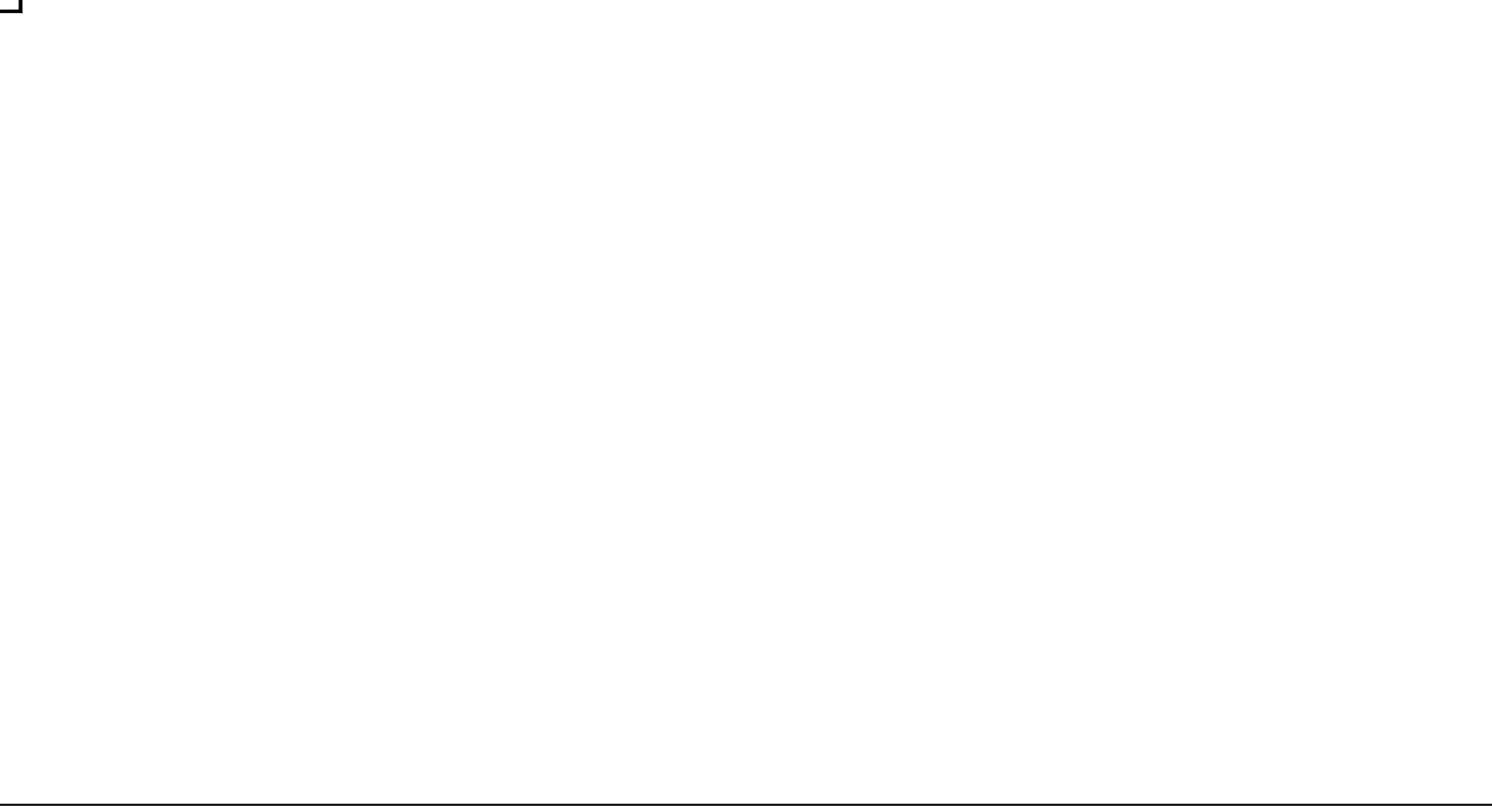
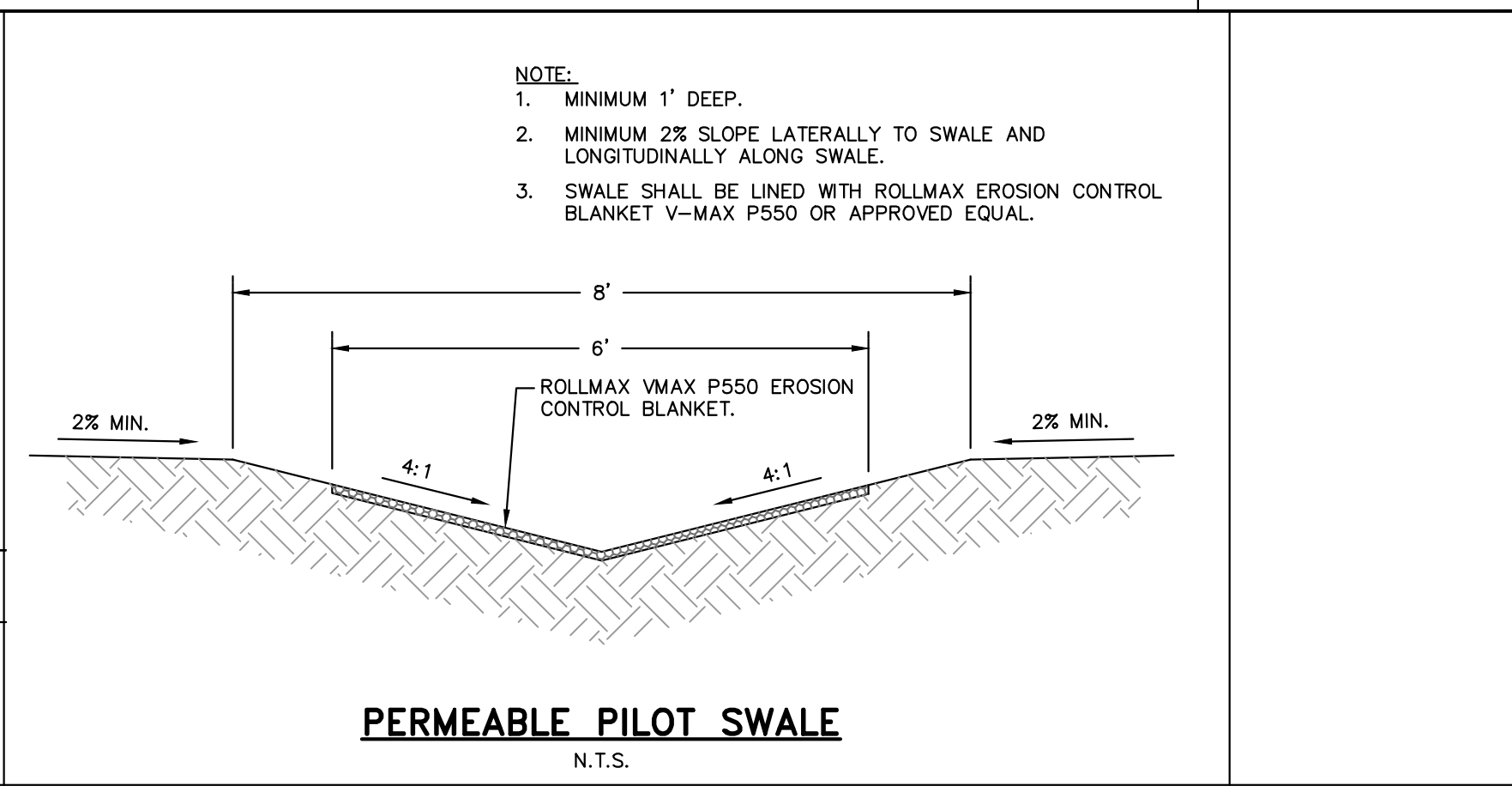
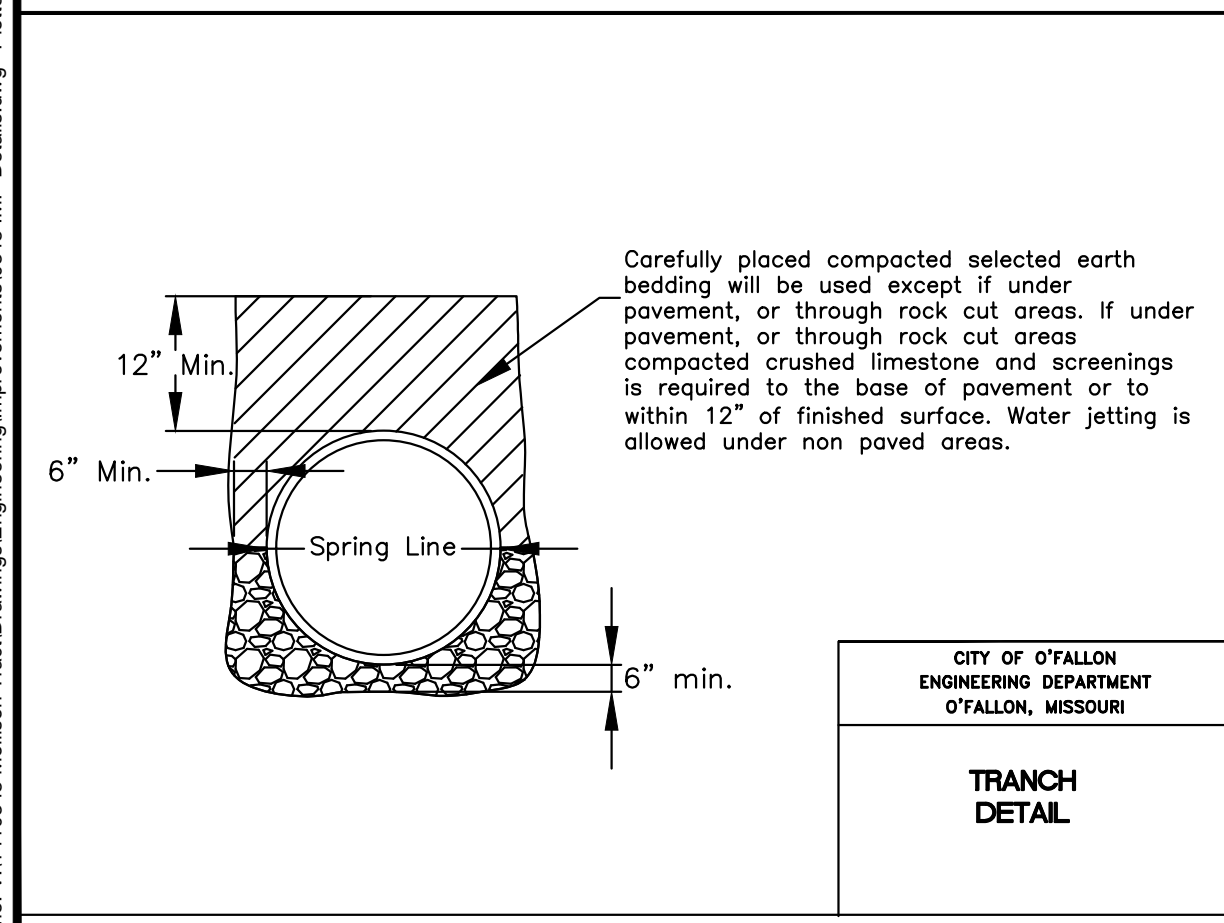
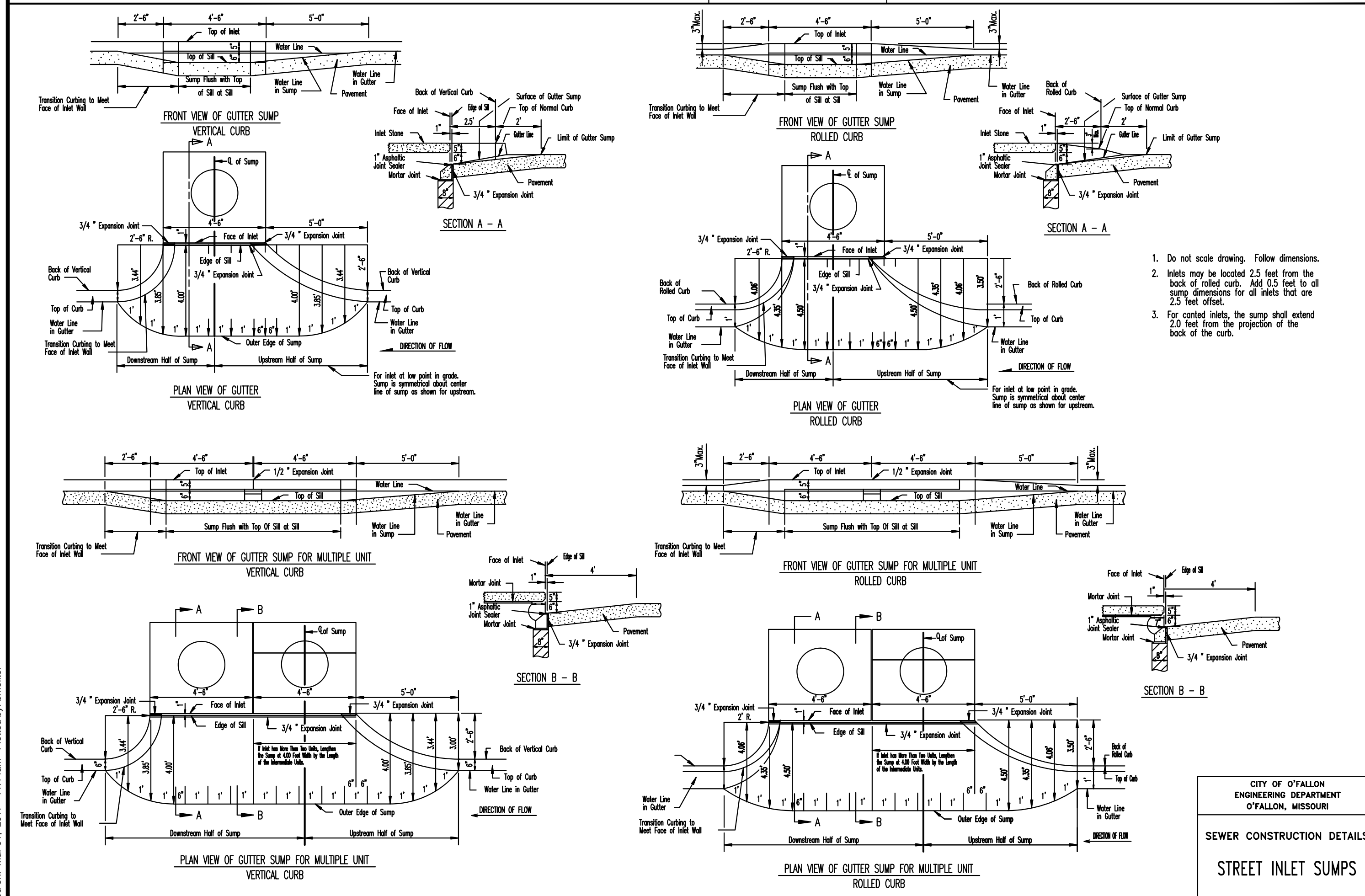
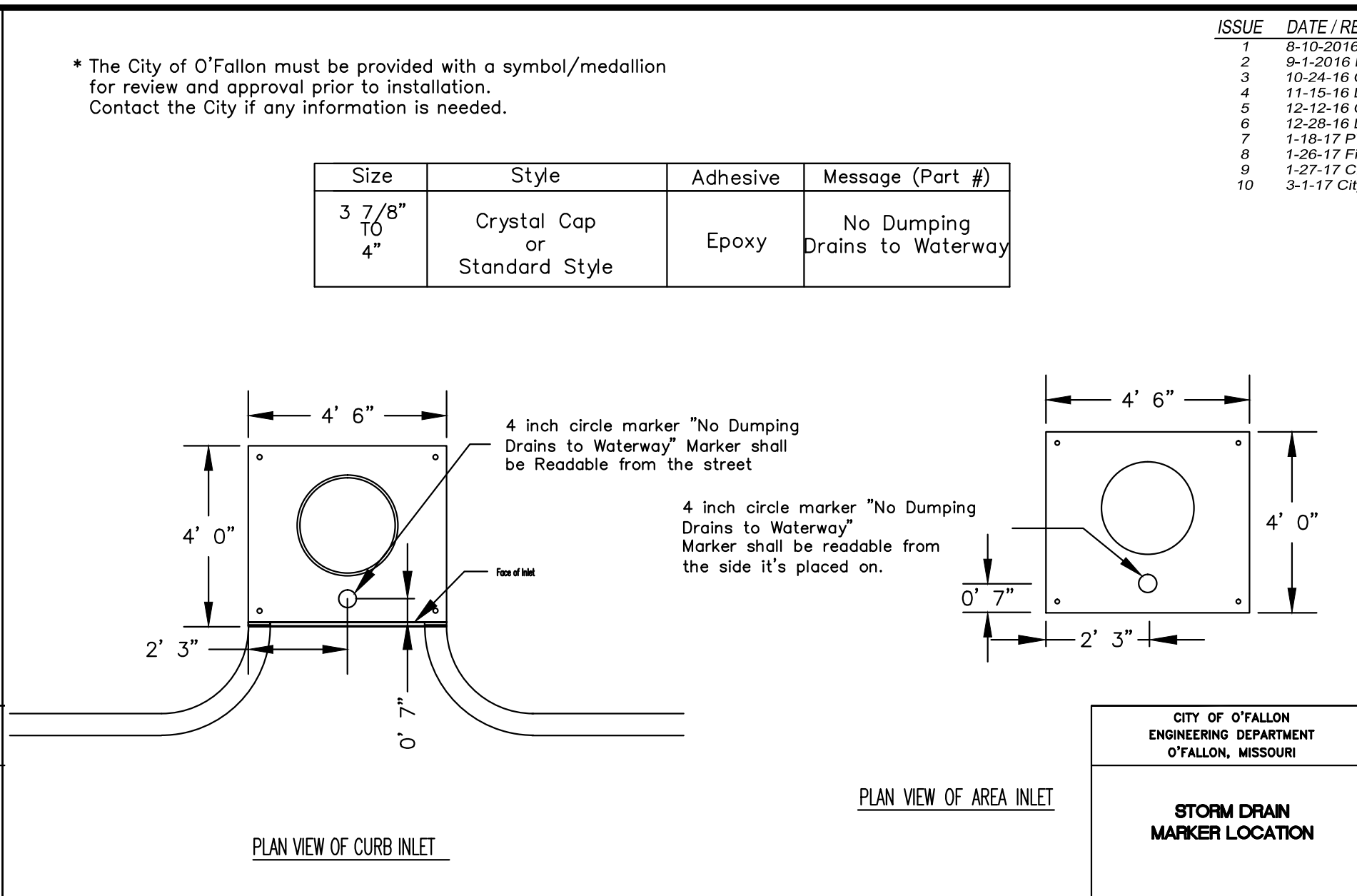
* The discharge point of all flared end sections shall be protected by rip rap or other approved means.

** Rip rap shown at flared end sections will be evaluated in the field by the Engineer, Contractor, and City Inspectors after installation for effectiveness and field modified, if necessary to reduce erosion on and off site.

* The City of O'Fallon must be provided with a symbol/medallion for review and approval prior to installation. Contact the City if any information is needed.

Size	Style	Adhesive	Message (Part #)
3 7/8" to 4"	Crystal Cap or Standard Style	Epoxy	No Dumping Drains to Waterway

MSD Type 5 Rock Blanket (% By Weight Passing)		
Sieve	Maximum	Minimum
12 inch	90	70
6 inch	30	10
1/2 inch	5	0



STORM SEWER DETAILS

PROJECT TITLE
WESTLEIGH
 O'FALLON, MISSOURI

THE STERLING CO.
 ENGINEERS & SURVEYORS
 5055 New Baumgartner Road
 St. Louis, Missouri 63129
 Ph 314-487-0440 Fax 314-487-8944
 www.sterling-eng-survey.com
 Corporate Certificate of Authority #001348

STATE OF MISSOURI
 RODNEY ARNOLD
 LICENSE # PE-2002016612
 PROFESSIONAL ENGINEER

Date: 3/01/2017
 RODNEY ARNOLD
 LICENSE # PE-2002016612
 Civil Engineer

Lombardo Homes of St. Louis, LLC
 2299 Technology Drive, Suite 150
 O'Fallon, Missouri 63366
 Ph. (636) 265-2710
 Fax (636) 695-3195
 www.lombardohomesstlouis.com

NEENAH CORPORATION
 R-7512-A1 Cast Iron Pipe Screen for 10-inch Pipe
 For overflow drain.
 For maximum free drainage area with openings sized to prevent clogging.
 R-7512-A1 Width 16" for 10" pipe
 Height....13 inches
 Length....18 inches
 Openings....1 inch
 Six 3/4" Holes for Anchor Bolts

OUTFALL STRUCTURE TRASH RACK DETAIL
 N.T.S.

P+Z No. P&Z NO
City No. 15-162-SP
Date: 3/01/2017
Job No. 14-10-348
Page No.

DTL-8
 IMP

* All other Storm Sewer Details will be by M.S.D. 2009 Standards and Specifications. ** ALL INLETS SHALL HAVE A 5/8" TRASH BAR CENTERED WITHIN THE OPENING(S).