



Date: 3/01/2017
RODNEY ARNOLD
LICENSE # PE-202016612
Civil Engineer

Lombardo Homes of St. Louis, LLC
2299 Technology Drive, Suite 150
O'Fallon, Missouri 63366
Ph (636) 265-2710
Fax (636) 695-3195
www.lombardohomesstlouis.com

PAVEMENT DETAILS

P+Z No. P&Z NO
City No. 15-162-SP
Date: 3/01/2017
Job No. 14-10-348
Page No.

ISSUE DATE/REMARKS

- 8-10-2016 Initial Submittal
- 9-1-2016 PWSO #2 & DCSD Comments
- 10-24-16 City Comments
- 11-15-16 DCSD Comments
- 12-15-16 City Comments
- 12-28-16 DCSD Comments
- 1-18-17 PWSO #2 Comments
- 1-26-17 Fire District Comments
- 1-27-17 City Comments
- 3-1-17 City Comments

GENERAL NOTES

- Do not scale drawing. Follow dimensions.
- Sidewalk and sidewalk curb ramps shall be constructed in accordance with these details and the current approved American with Disabilities Act Accessibility Guidelines (ADA).
- Minimum sidewalk width along 6" vertical curb shall be 5 feet. Minimum sidewalk width along 3" rolled curb shall be 4 feet.
- Maximum sidewalk cross slope 0.02%/ft.
- All sidewalk sections shall be 4" thick, except where indicated otherwise by these details. Reinforcing steel details, thickness, shall be paid for as "Concrete Sidewalk".
- Where curb ramp meets pavement, Balotise will not be permitted.
- If integral concrete curb is constructed, strike a dummy joint across bottom of ramp at curb line. If concrete curb is cast-on, back out pavement to provide full depth curb across ramp from outer point of curb taper to outer point of curb taper.
- For sidewalk joints on Cul-De-Sacs, refer to "Pavement Construction Details".
- For roadway cross slopes, pavement types, and thicknesses, refer to "Standard Typical Sections".
- The intersection of two sidewalks or the intersection of a sidewalk and driveway may occur as a wheelchair passing space on sidewalks less than 5 feet wide.
- All curb ramps shall have a detectable warning complying with Americans with Disabilities Act Accessibility Guidelines (ADA).

TYPE 1 AND TYPE 2 CURB RAMPS

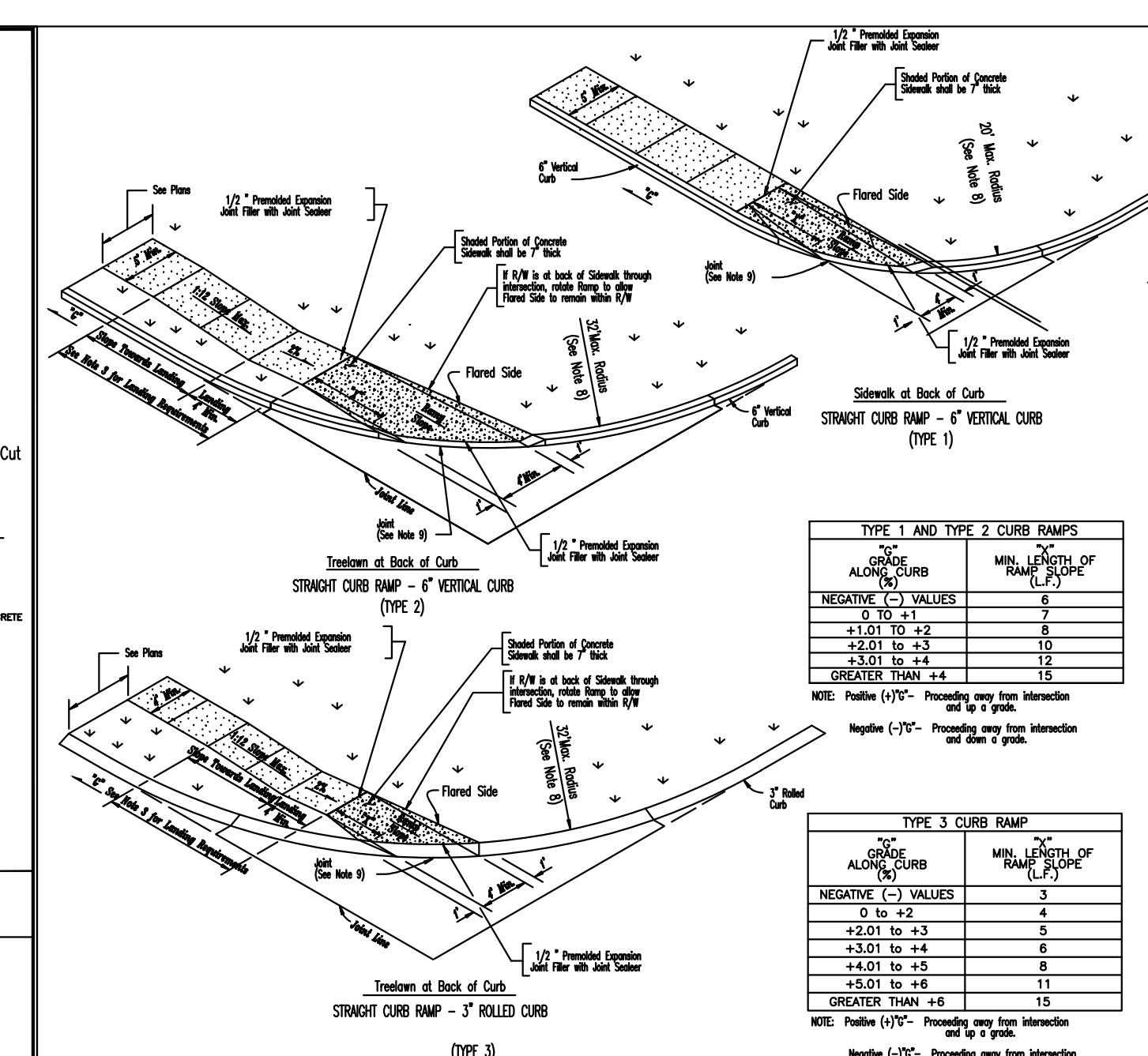
| CURB TYPE | MIN. LENGTH OF RAMP (L _R) |
|---------------------|---------------------------------------|
| NEGATIVE (% VALUES) | 3 |
| +1.01 TO +2 | 4 |
| +2.01 TO +3 | 5 |
| +3.01 TO +4 | 6 |
| +4.01 TO +5 | 8 |
| +5.01 TO +6 | 11 |
| GREATER THAN +6 | 15 |

TYPE 3 CURB RAMP

| CURB TYPE | MIN. LENGTH OF RAMP (L _R) |
|---------------------|---------------------------------------|
| NEGATIVE (% VALUES) | 3 |
| +1.01 TO +2 | 4 |
| +2.01 TO +3 | 5 |
| +3.01 TO +4 | 6 |
| +4.01 TO +5 | 8 |
| +5.01 TO +6 | 11 |
| GREATER THAN +6 | 15 |

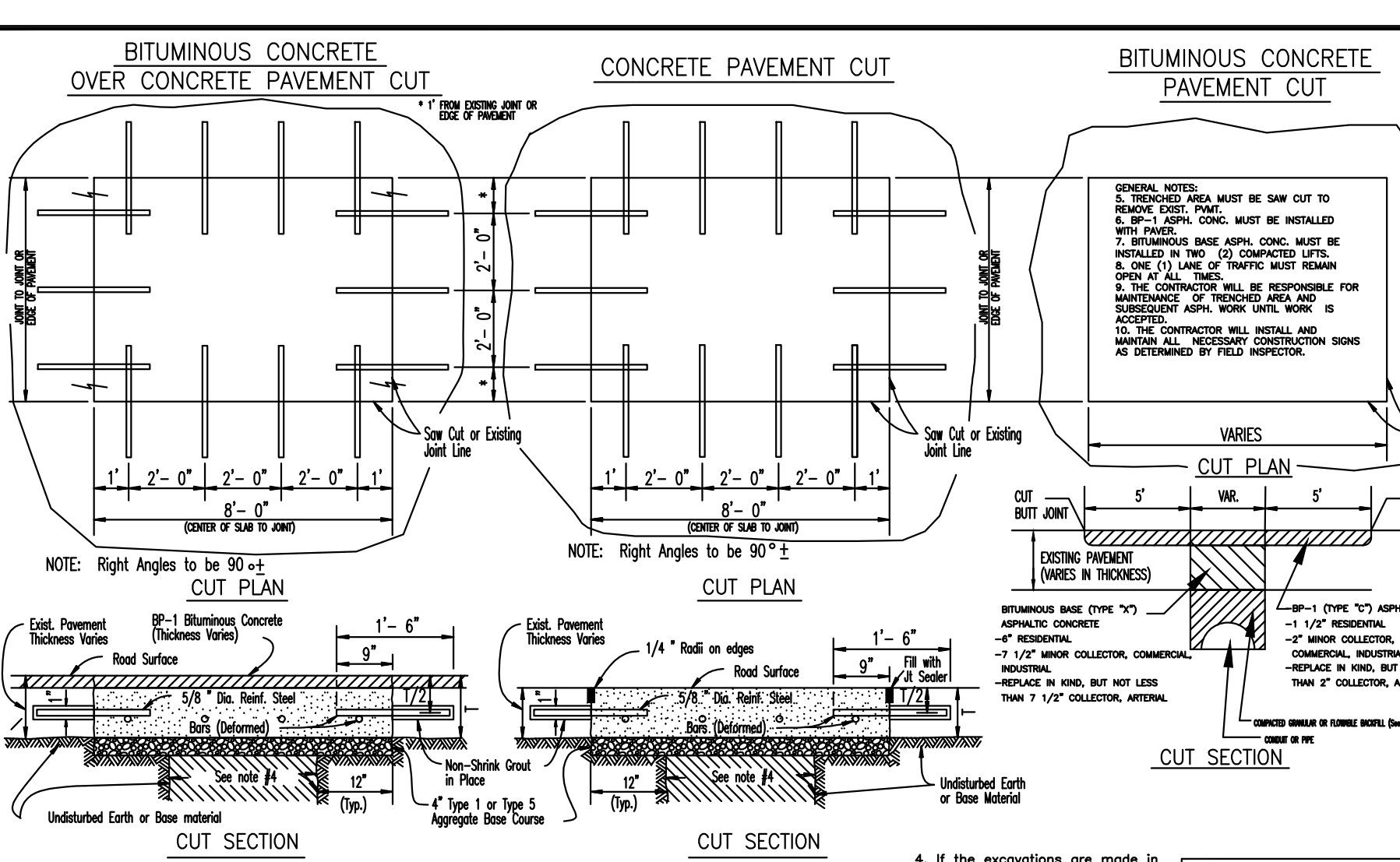
GENERAL NOTES

- Do not scale drawing. Follow dimensions.
- Sidewalk cross slope 0.02%/ft.
- Sidewalk thickness increases to 6" on each side of Private Driveways and 7" on each side of Commercial Driveways for one section of sidewalk equal in length to the width of the sidewalk. See "Entrance Construction Details".
- For sidewalk locations on Cul-De-Sacs see "Pavement Construction Details".
- For longitudinal and transverse joints, dowels, and tie bar requirements and dimensions refer to the "Integral Curb Pavement Typical Sections and Details".
- For roadway cross slopes, pavement types, and thickness, refer to "Standard Typical Section".



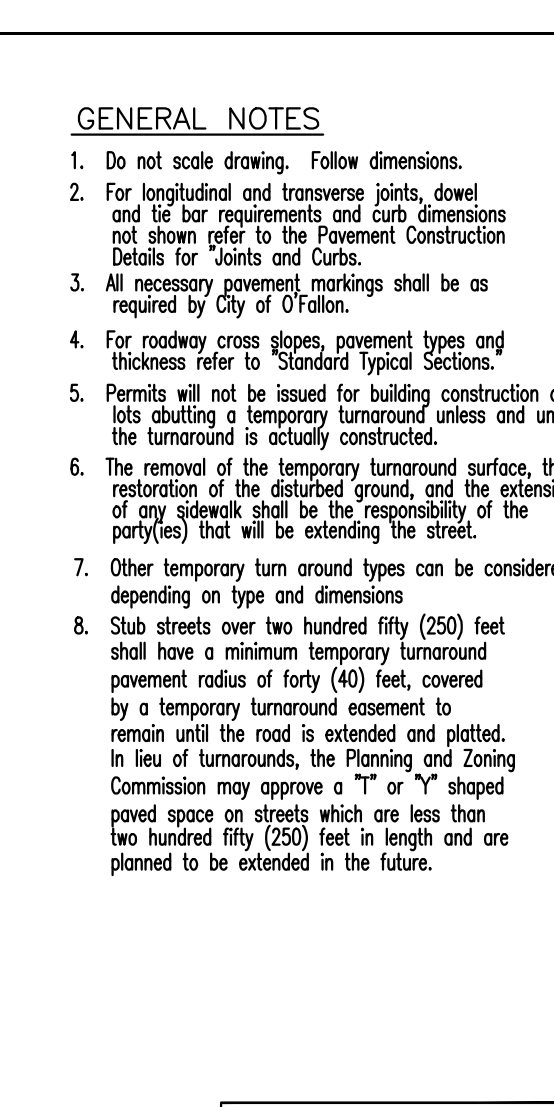
CITY OF O'FALLON
ENGINEERING DEPARTMENT
O'FALLON, MISSOURI

DETAILS OF TEMPORARY OPENINGS IN ROADWAY PAVEMENT



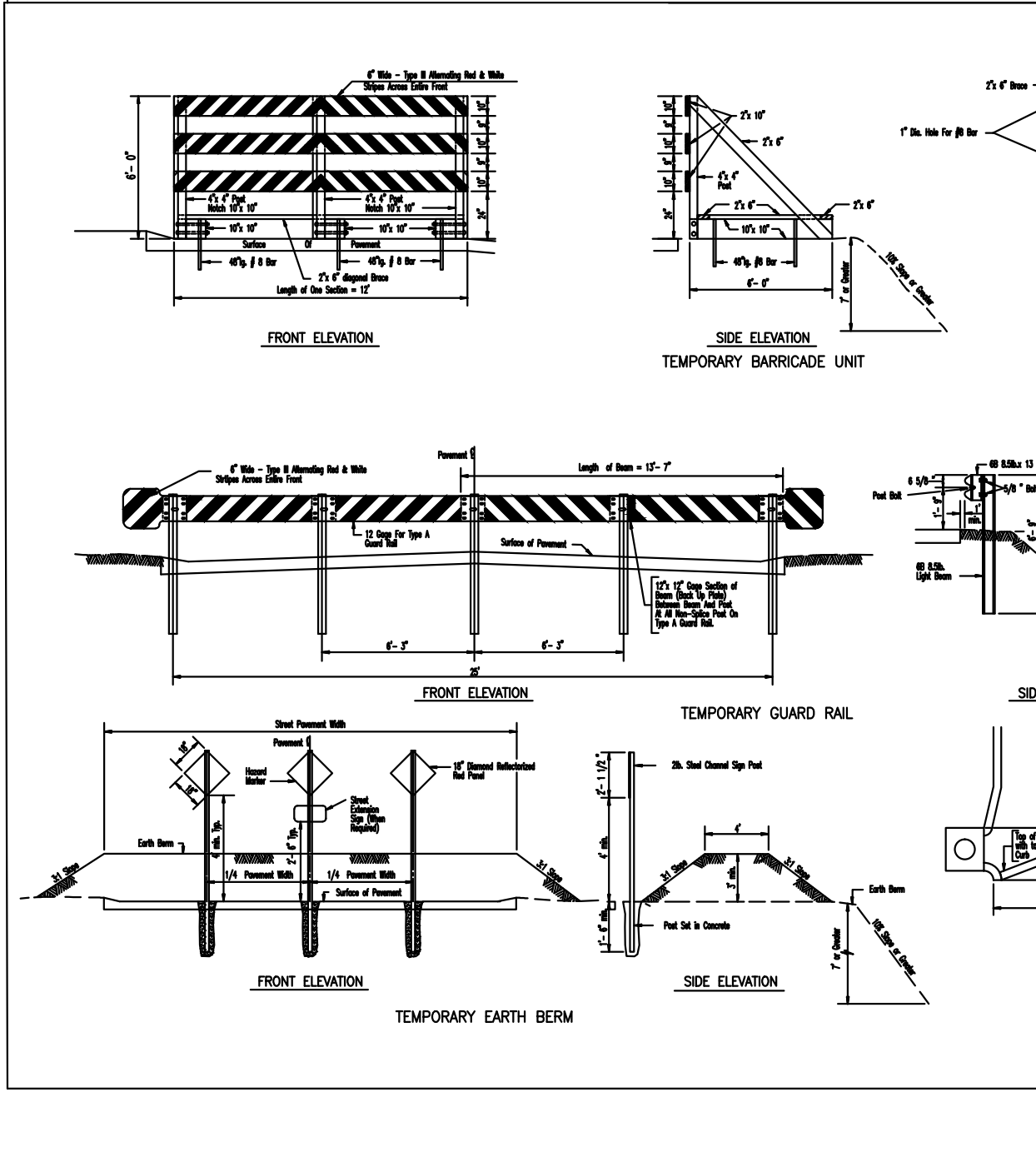
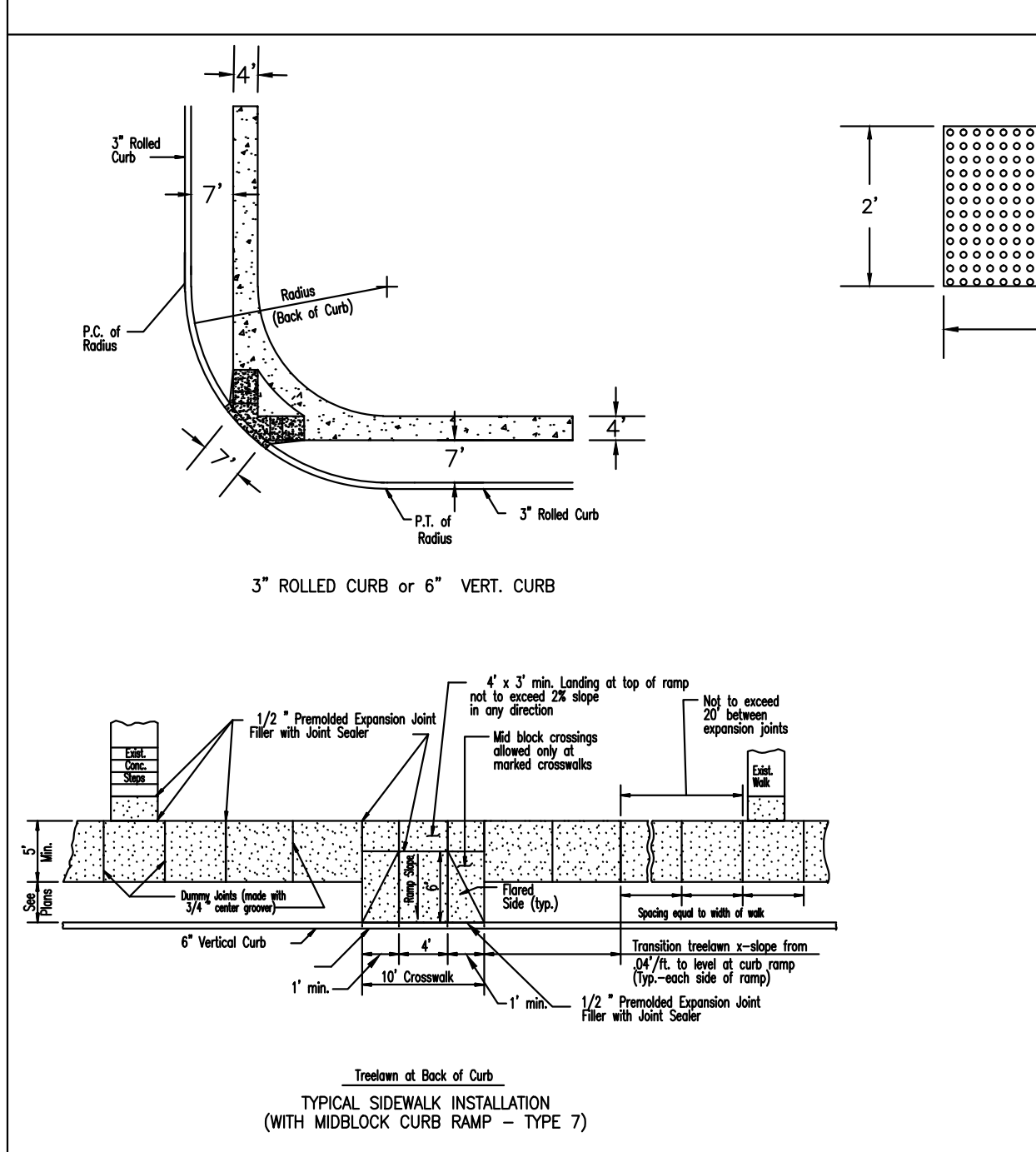
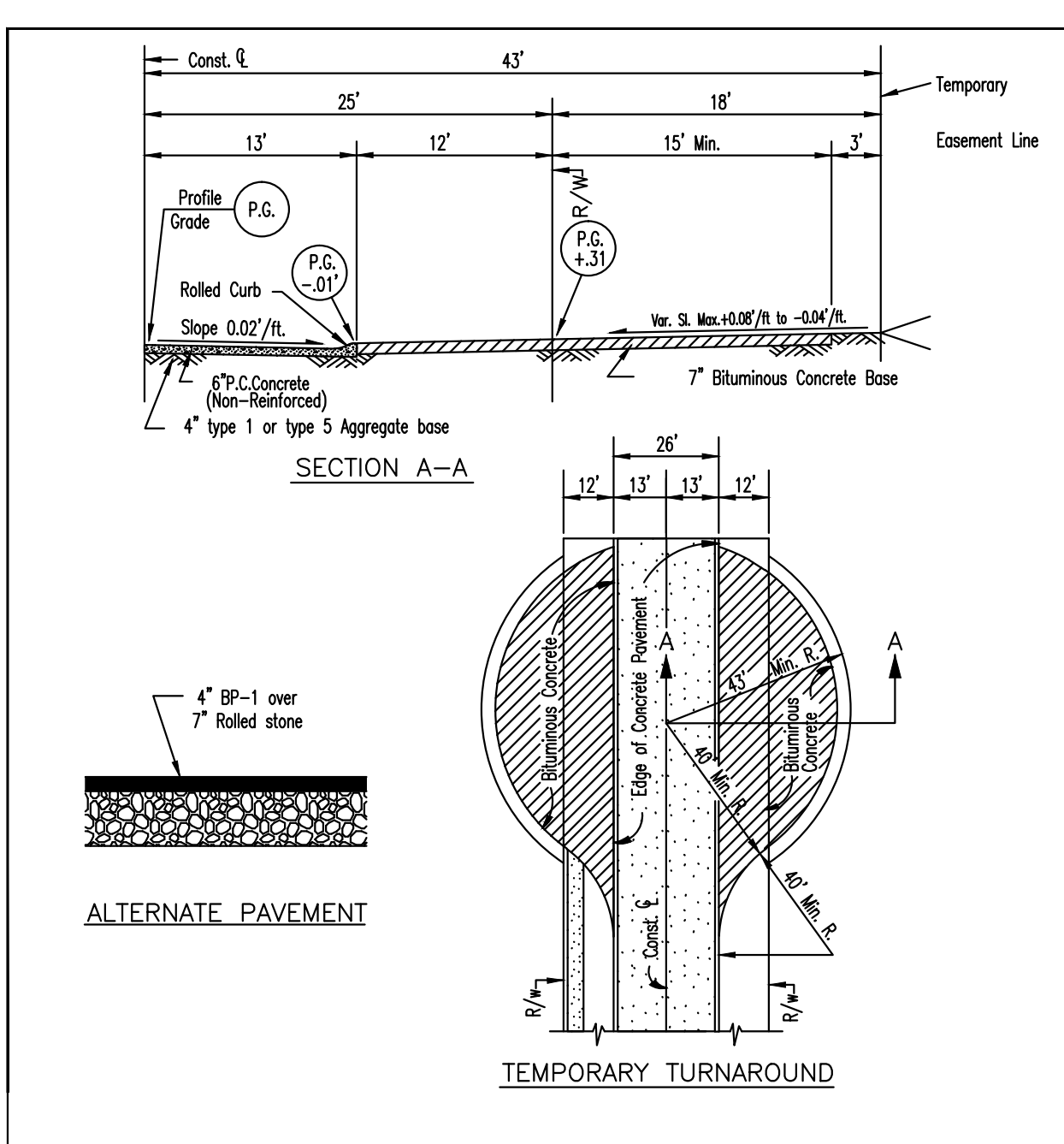
CITY OF O'FALLON
ENGINEERING DEPARTMENT
O'FALLON, MISSOURI

DETAILS OF TEMPORARY OPENINGS IN ROADWAY PAVEMENT



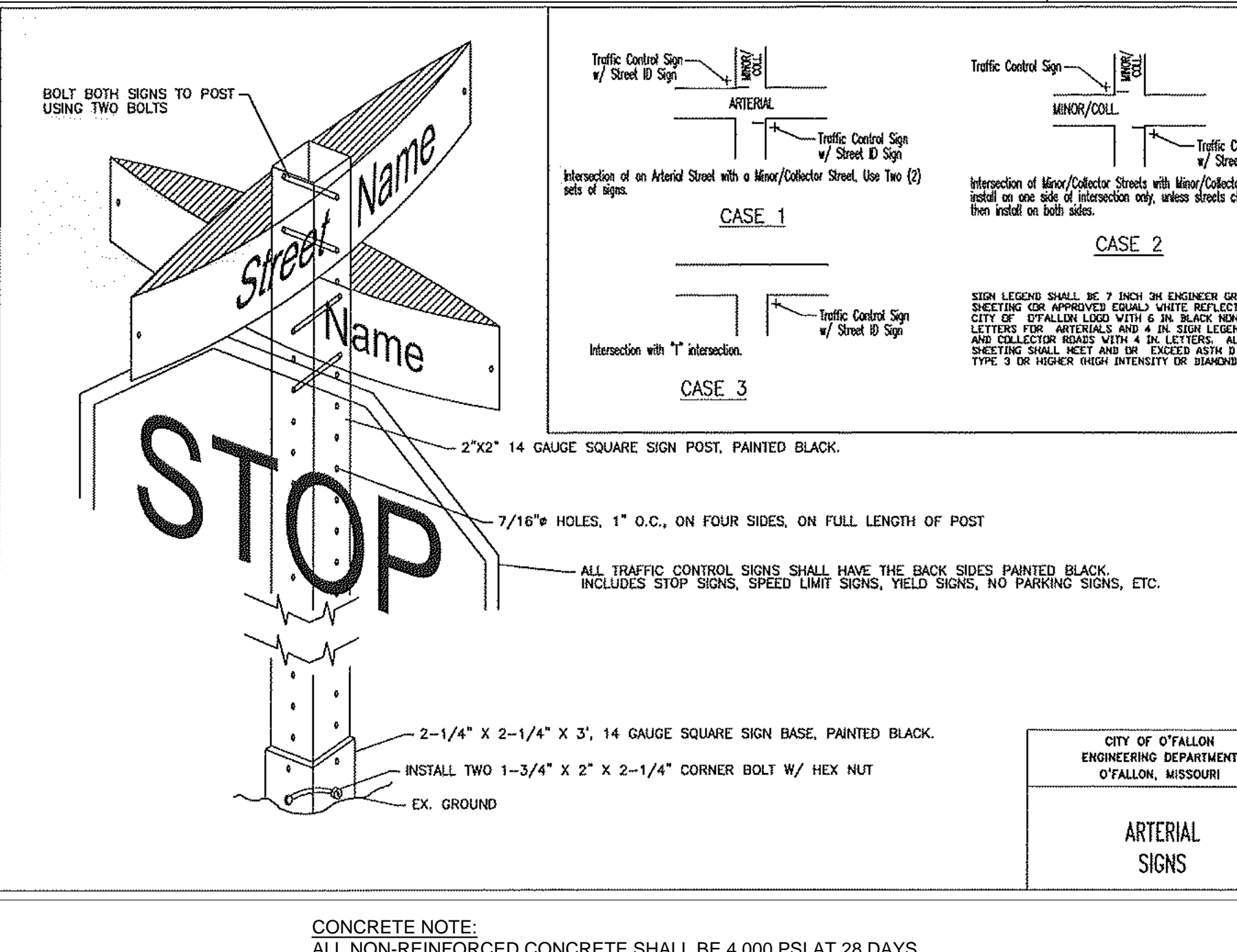
CITY OF O'FALLON
ENGINEERING DEPARTMENT
O'FALLON, MISSOURI

**PAVEMENT CONSTRUCTION DETAILS
RESIDENTIAL TEMPORARY TURNAROUND**



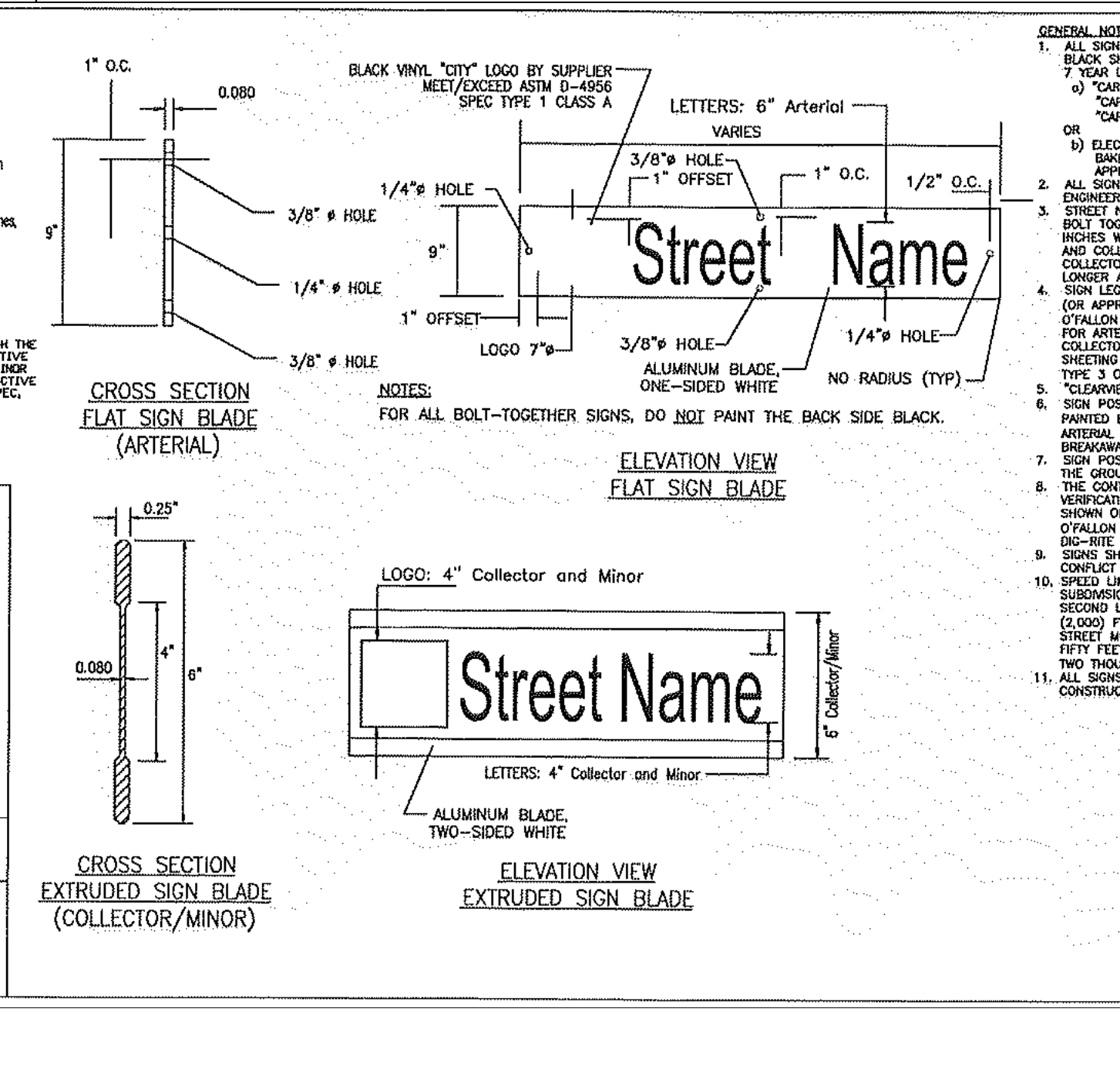
CITY OF O'FALLON
ENGINEERING DEPARTMENT
O'FALLON, MISSOURI

TREATMENT OF TEMPORARY TERMINATIONS OF ROADWAY PAVEMENT



CITY OF O'FALLON
ENGINEERING DEPARTMENT
O'FALLON, MISSOURI

ARTERIAL SIGNS



CITY OF O'FALLON
ENGINEERING DEPARTMENT
O'FALLON, MISSOURI

SIGNS, DETAILS AND LOCATIONS