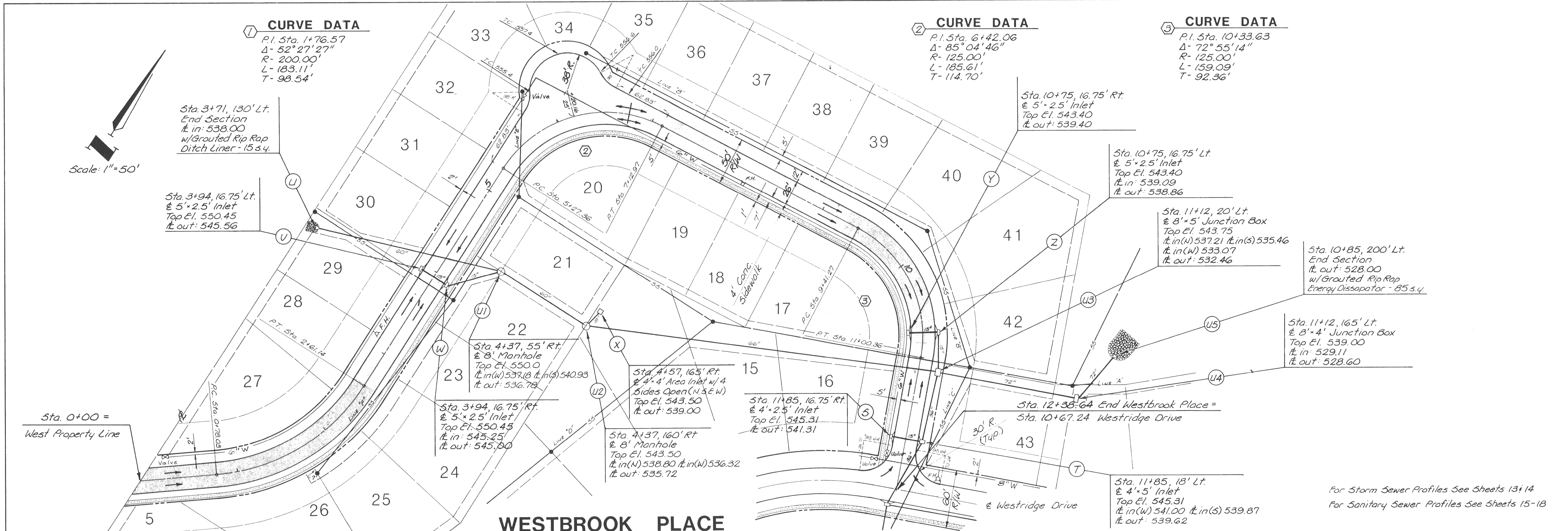


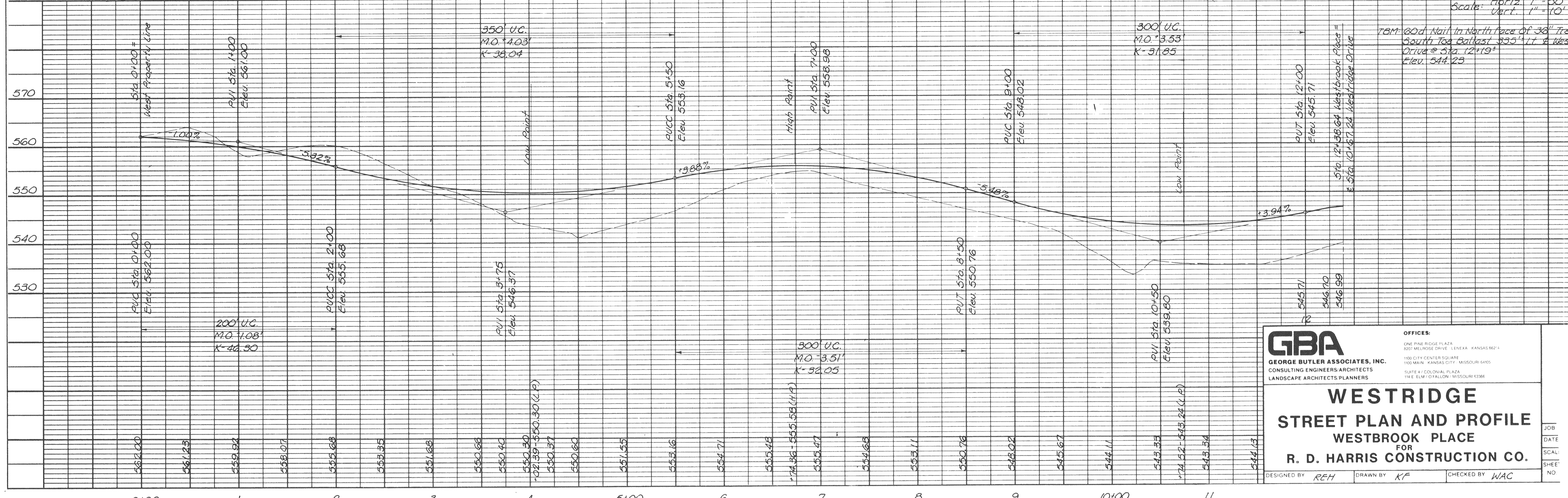
**① CURVE DATA**  
 P.I. Sta. 1+76.57  
 $\Delta = 52^\circ 27' 27''$   
 R- 200.00'  
 L- 183.11'  
 T- 98.54'

**② CURVE DATA**  
 P.I. Sta. 6+42.06  
 $\Delta = 85^\circ 04' 46''$   
 R- 125.00'  
 L- 185.61'  
 T- 114.70'

**③ CURVE DATA**  
 P.I. Sta. 10+33.63  
 $\Delta = 72^\circ 55' 14''$   
 R- 125.00'  
 L- 159.09'  
 T- 92.36'



**WESTBROOK PLACE**



For Storm Sewer Profiles See Sheets 13+14  
 For Sanitary Sewer Profiles See Sheets 15-18

**GBA**  
 GEORGE BUTLER ASSOCIATES, INC.  
 CONSULTING ENGINEERS ARCHITECTS  
 LANDSCAPE ARCHITECTS PLANNERS

**OFFICES:**  
 ONE PINE RIDGE PLAZA  
 8007 MELROSE DRIVE LEXINGTON, MISSOURI 65204  
 100 CITY CENTER SQUARE  
 100 MAIN KANSAS CITY, MISSOURI 64105  
 SUITE 4 COLONIAL PLAZA  
 314 ELM / OTTAWA MISSOURI 63106

**WESTRIDGE**  
**STREET PLAN AND PROFILE**  
 WESTBROOK PLACE  
 FOR  
**R. D. HARRIS CONSTRUCTION CO.**

DESIGNED BY REH DRAWN BY KF CHECKED BY WAC

JOB NO.  
 DATE  
 SCALE  
 SHEET NO.