

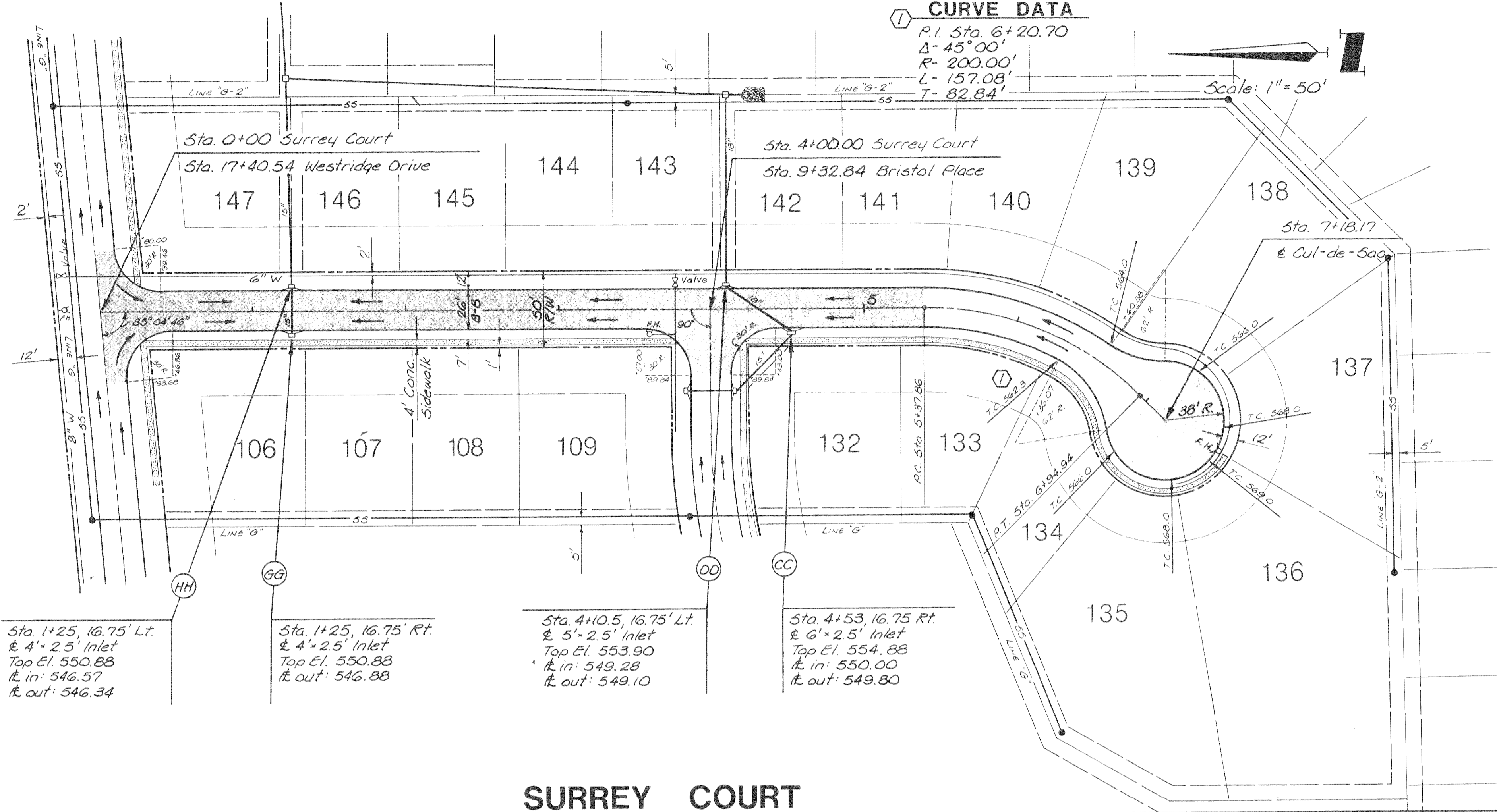
GENERAL NOTES

1. THE VERIFICATION OF THE LOCATION OF ALL UNDERGROUND UTILITIES, EITHER SHOWN OR NOT SHOWN, SHALL BE THE RESPONSIBILITY OF THE CONTRACTOR, AND SHALL NOTIFY ALL UTILITY COMPANIES PRIOR TO CONSTRUCTION TO HAVE EXISTING UTILITIES LOCATED PRIOR TO GRADING OR CONSTRUCTION IMPROVEMENTS.
2. WATER, GAS AND OTHER UNDERGROUND UTILITIES SHALL NOT CONFLICT WITH THE DEPTH OR HORIZONTAL LOCATION OF EXISTING AND PROPOSED SANITARY AND STORM SEWERS, INCLUDING HOUSE LATERALS.
3. ALL P.V.C. WATER PIPE SHALL BE CLASS 200 OR SDR-21. MAXIMUM DEFLECTION ON WATER LINES SHALL NOT EXCEED 5". IF GREATER THAN 5" IS REQUIRED, THEN FITTINGS WILL BE USED.
4. ALL P.V.C. SANITARY SEWER PIPE TO BE SDR-35 CONFORMING TO ASTM-D-3034 WITH A CLASS B BEDDING. (SEE SHEET NO. 21)
5. ALL STORM SEWER PIPES WITHIN PROPOSED RIGHT OF WAY TO BE REINFORCED CONCRETE PIPE (ASTM C76 CLASS III MINIMUM UNLESS OTHERWISE SHOWN ON THE PLANS.)
6. STORM OR SANITARY LINES CONSTRUCTED ABOVE THE ORIGINAL GROUND LINE SHALL HAVE THE FILL UNDER THE LINES COMPACTED TO 90% MAXIMUM DRY DENSITY AS DETERMINED BY MODIFIED AASHTO COMPACTION TEST (CURRENT A.S.T.M. SPECIFICATION D-1557).
7. ALL TRENCH BACKFILL BELOW PAVEMENT FOR STORM, WATER OR SANITARY LINES SHALL BE GRANULAR MATERIAL COMPACTED TO A MINIMUM OF 95% AS DETERMINED BY STANDARD PROCTOR TEST.
8. STORM SEWERS 18" AND SMALLER SHALL BE A.S.T.M. C-14 UNLESS OTHERWISE SHOWN ON PLANS OR SPECIFIED HEREIN WITH TYPE "B" BEDDING WHEN IN ROCK (SEE SHEET NO. 21).
9. STORM SEWERS 21" AND LARGER SHALL BE A.S.T.M. C-76 CLASS III MINIMUM, UNLESS OTHERWISE SHOWN ON THE PLANS WITH TYPE "B" BEDDING WHEN IN ROCK (SEE SHEET NO. 21).
10. ALL CURB INLETS TO HAVE FRONT OF INLET TWO FEET BEHIND THE CURB.
11. THE MINIMUM ALLOWABLE VERTICAL DISTANCE FROM THE LOWEST POINT OF A BASEMENT TO THE FLOWLINE OF A SANITARY SEWER AT THE WYE LOCATION SHALL NOT BE LESS THAN THE DIAMETER OF THE MAIN SEWER PLUS 2 1/2 FEET.
12. EASEMENTS HAVE BEEN PROVIDED FOR SANITARY AND STORM SEWERS AND ALL UTILITIES AND ARE SHOWN ON THE RECORD PLAT. SEE RECORD PLAT FOR SIZE AND LOCATION OF EASEMENTS PROVIDED. NO EASEMENTS HAVE BEEN OBTAINED FOR HOUSE LATERALS.
13. ALL ROUGH GRADING SHALL BE WITHIN 0.2 FEET MORE OR LESS OF THOSE SHOWN ON THE GRADING PLAN.
14. NO SLOPE SHALL BE STEEPER THAN 3:1 AND SHALL BE EITHER SEEDED AND MULCHED OR SODDED.
15. NO GRADED AREAS SHALL REMAIN WITHOUT BEING SEEDED AND MULCHED AS NECESSARY TO MAINTAIN EROSION CONTROL.
16. ALL CONSTRUCTION AND MATERIALS REQUIRED SHALL CONFORM TO THE CITY OF O'FALLON STANDARDS.

CURVE DATA

P.I. Sta. 6+20.70
 $\Delta = 45^{\circ}00'$
 $R = 200.00'$
 $L = 157.08'$
 $T = 82.84'$

Scale: 1" = 50'



Sta. 1+25, 16.75' Lt. & 4" x 2.5' Inlet Top El. 550.88 ft. in: 546.57 ft. out: 546.34

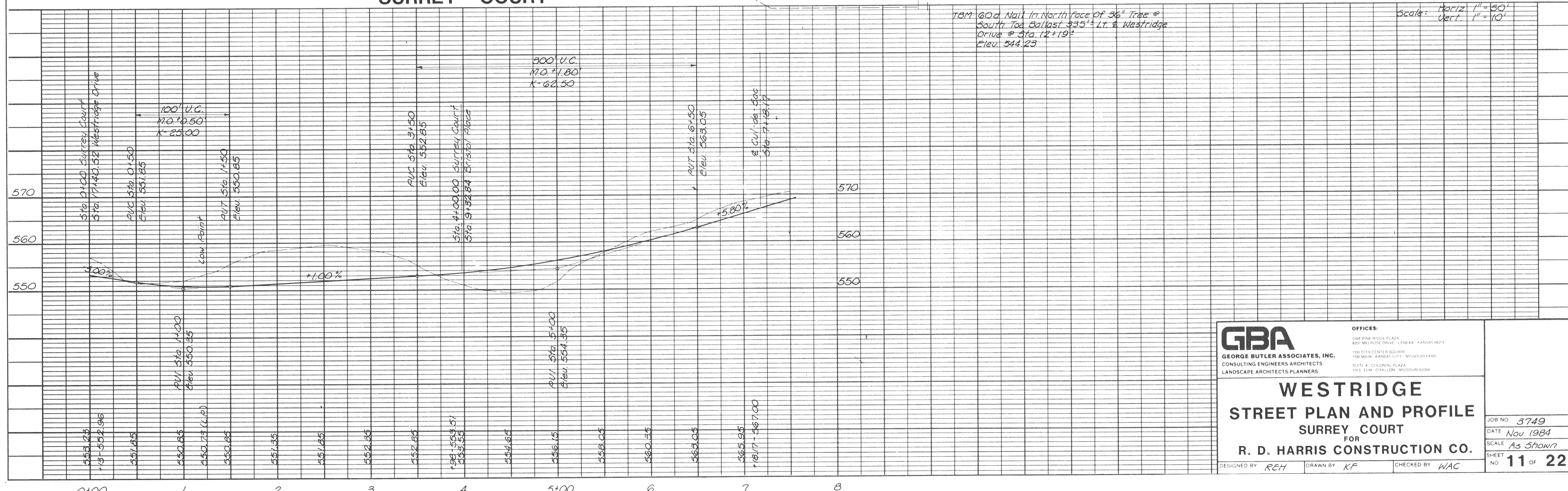
Sta. 1+25, 16.75' Rt. & 4" x 2.5' Inlet Top El. 550.88 ft. in: 546.88 ft. out: 546.88

Sta. 4+10.5, 16.75' Lt. & 5" x 2.5' Inlet Top El. 553.90 ft. in: 549.28 ft. out: 549.10

Sta. 4+53, 16.75' Rt. & 6" x 2.5' Inlet Top El. 554.88 ft. in: 550.00 ft. out: 549.80

For Storm Sewer Profiles See Sheets 13 & 14
 For Sanitary Sewer Profiles See Sheets 15 & 18

SURREY COURT



18" 60d Nail in North Face of 36" Tree @ South Top Ballast 335' Lt. & Westridge Drive @ Sta. 12+19' Elev. 544.25

Scale: Horiz. 1" = 50'
 Vert. 1" = 10'

GBA
 GEORGE BUTLER ASSOCIATES, INC.
 CONSULTING ENGINEERS ARCHITECTS
 LANDSCAPE ARCHITECTS/PLANNERS

WESTRIDGE STREET PLAN AND PROFILE
 SURREY COURT
 FOR
R. D. HARRIS CONSTRUCTION CO.

JOB NO. 3749
 DATE Nov. 1984
 SCALE As Shown
 SHEET NO. 11 OF 22

DESIGNED BY REH DRAWN BY KF CHECKED BY WAC