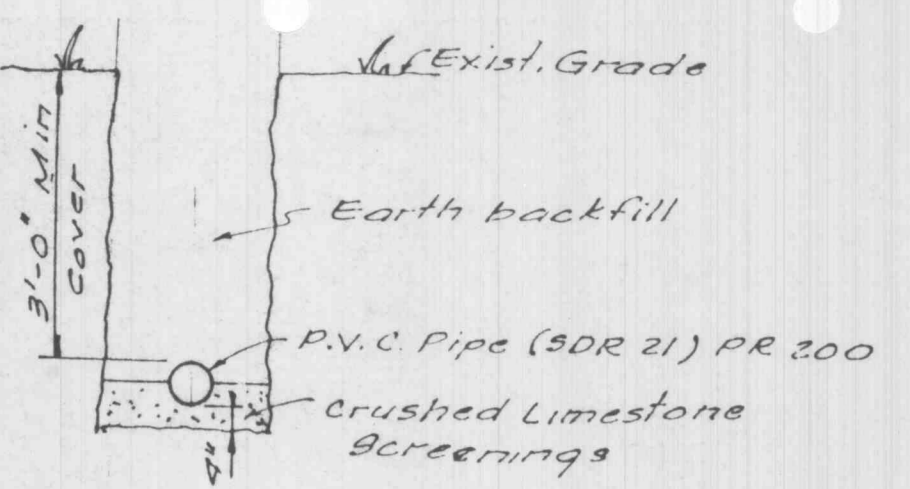
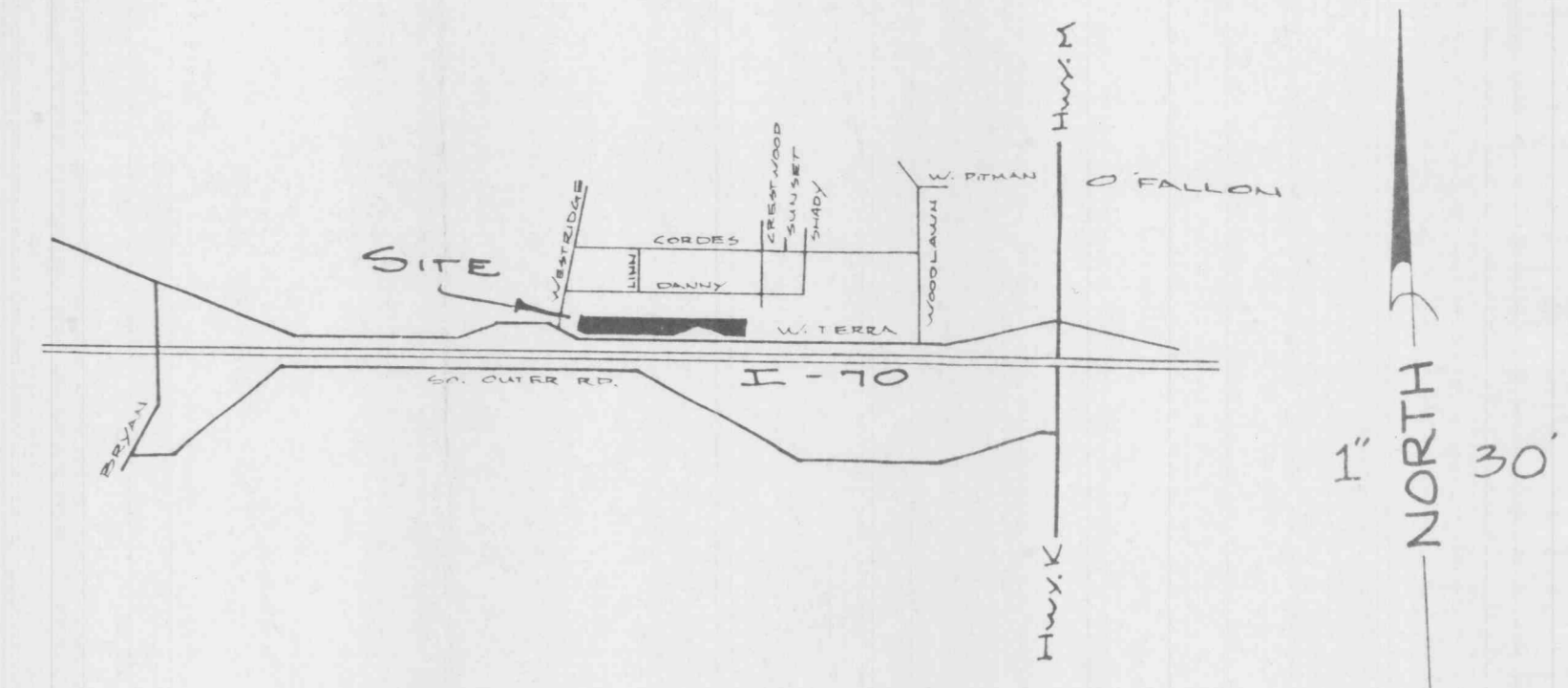
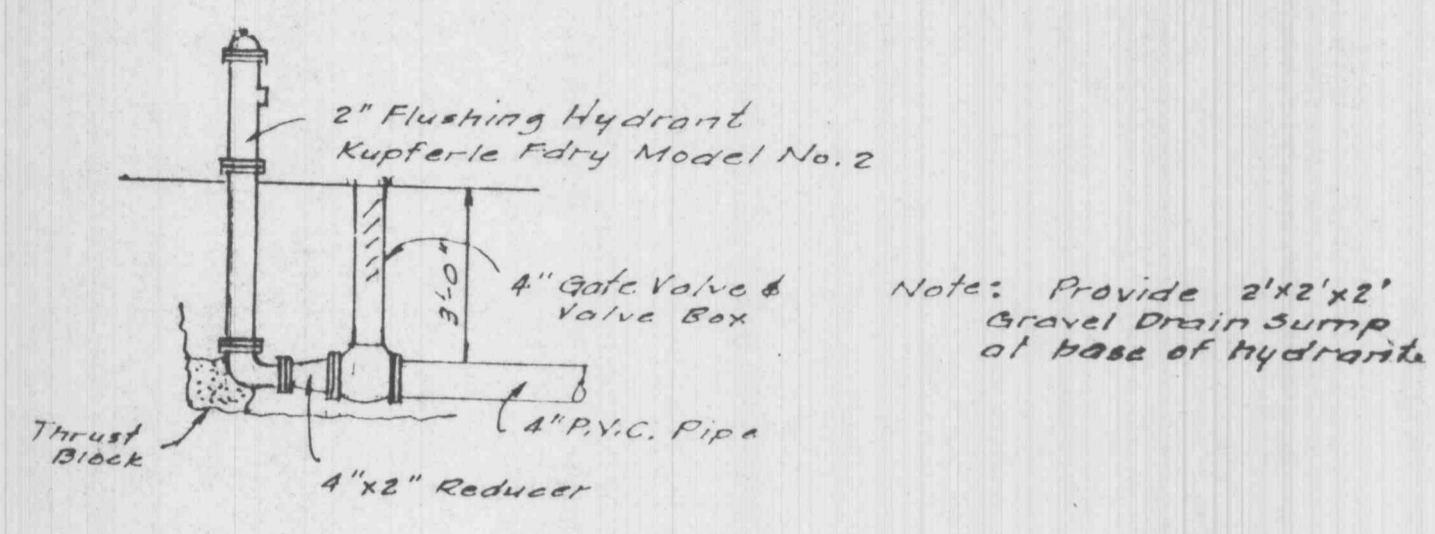


WESTWOOD BUSINESS PARK

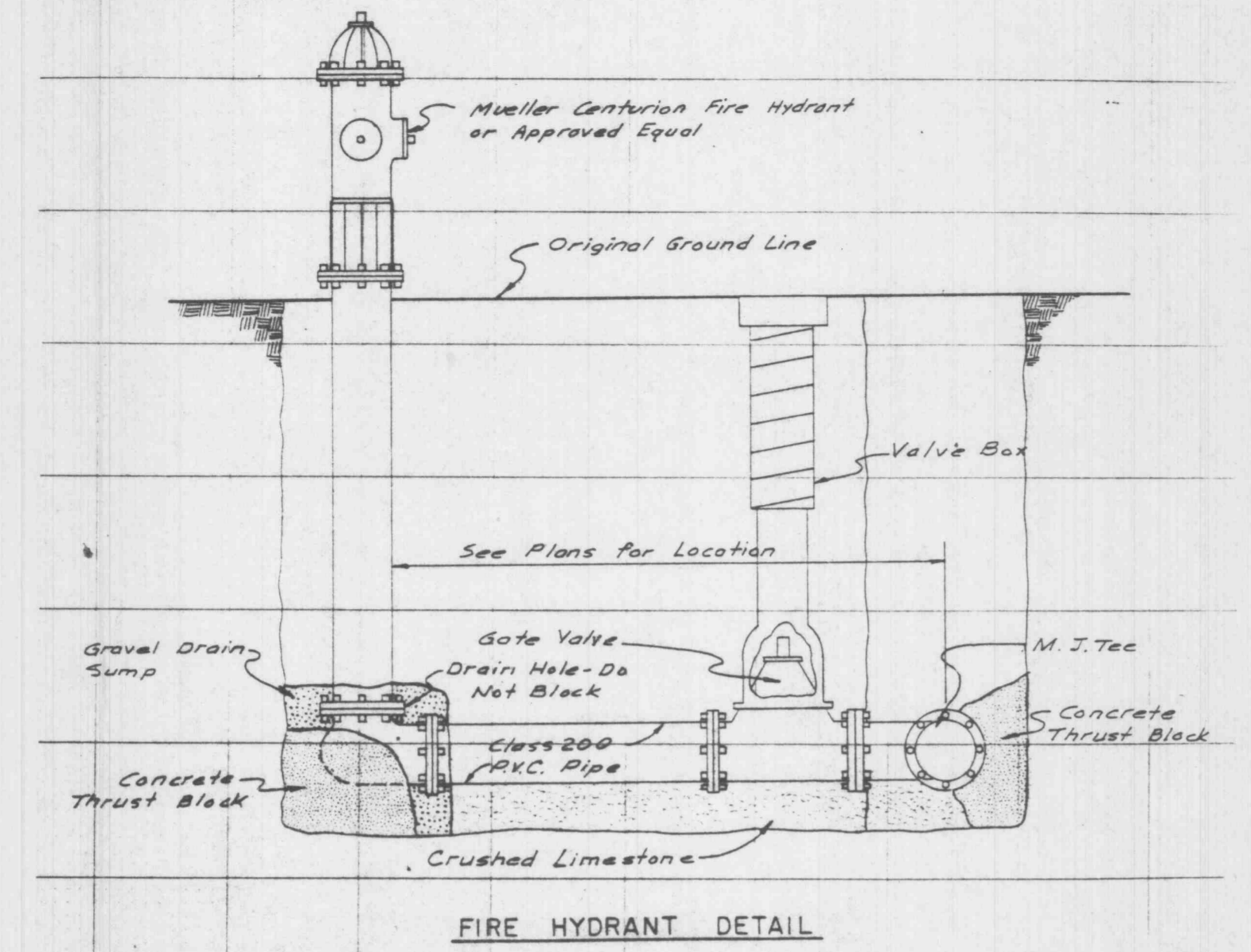
LOTS 36 thru 50 of WESTWOOD ACRES
in Sec. 29 & U.S. Survey 55, T. 47 N., R. 3 E.,
City of O'Fallon, St. Charles Co., Mo.



TRENCH DETAIL



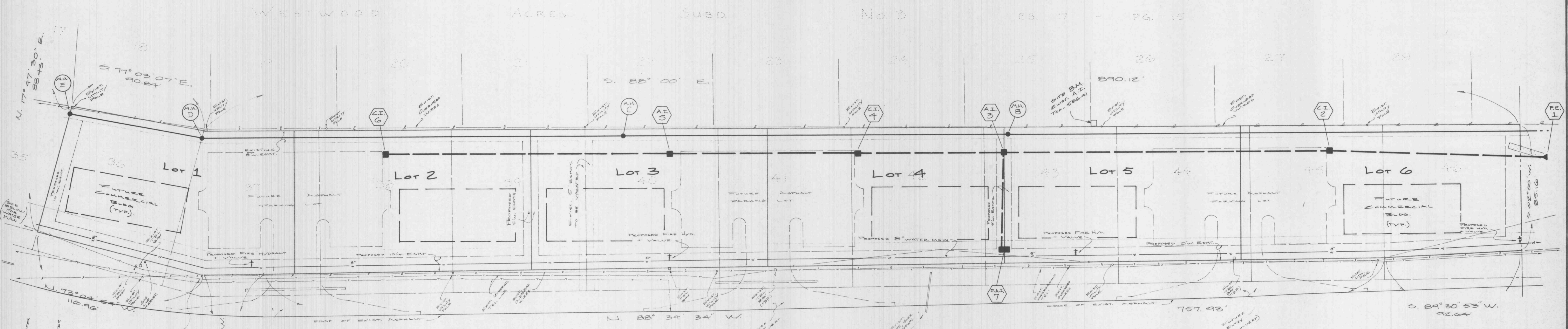
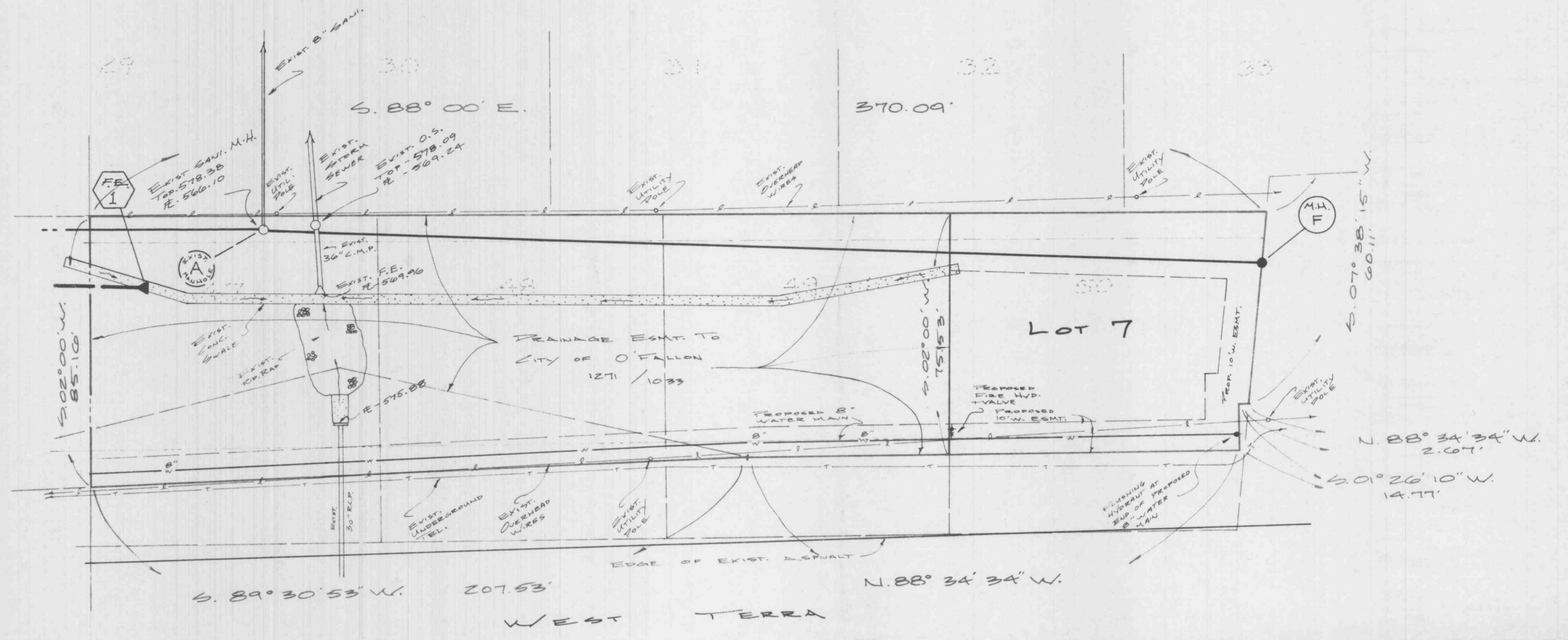
FLUSHING HYDRANT DETAIL



FIRE HYDRANT DETAIL

Minimum Bearing Surface Area for Thrust Blocks

Pipe Dia.	30° Bend & Tee	11 1/2°, 22 1/2°, & 45° Bend
4 1/2"	2 s.f.	2 s.f.
6"	3 s.f.	2 s.f.
8"	4 s.f.	3 s.f.
10"	4 s.f.	3 s.f.



INTERSTATE 70 NORTH OUTER ROAD (AKA WEST TERRA)



Landmark Surveying & Engineering, Inc.
802 E. Main, Wentzville, MO 63385
327-5853 • 332-9190
Troy: 528-5452

FLAT PLAN

Drawn	Date
Ckd.	Date
Rev.	D.