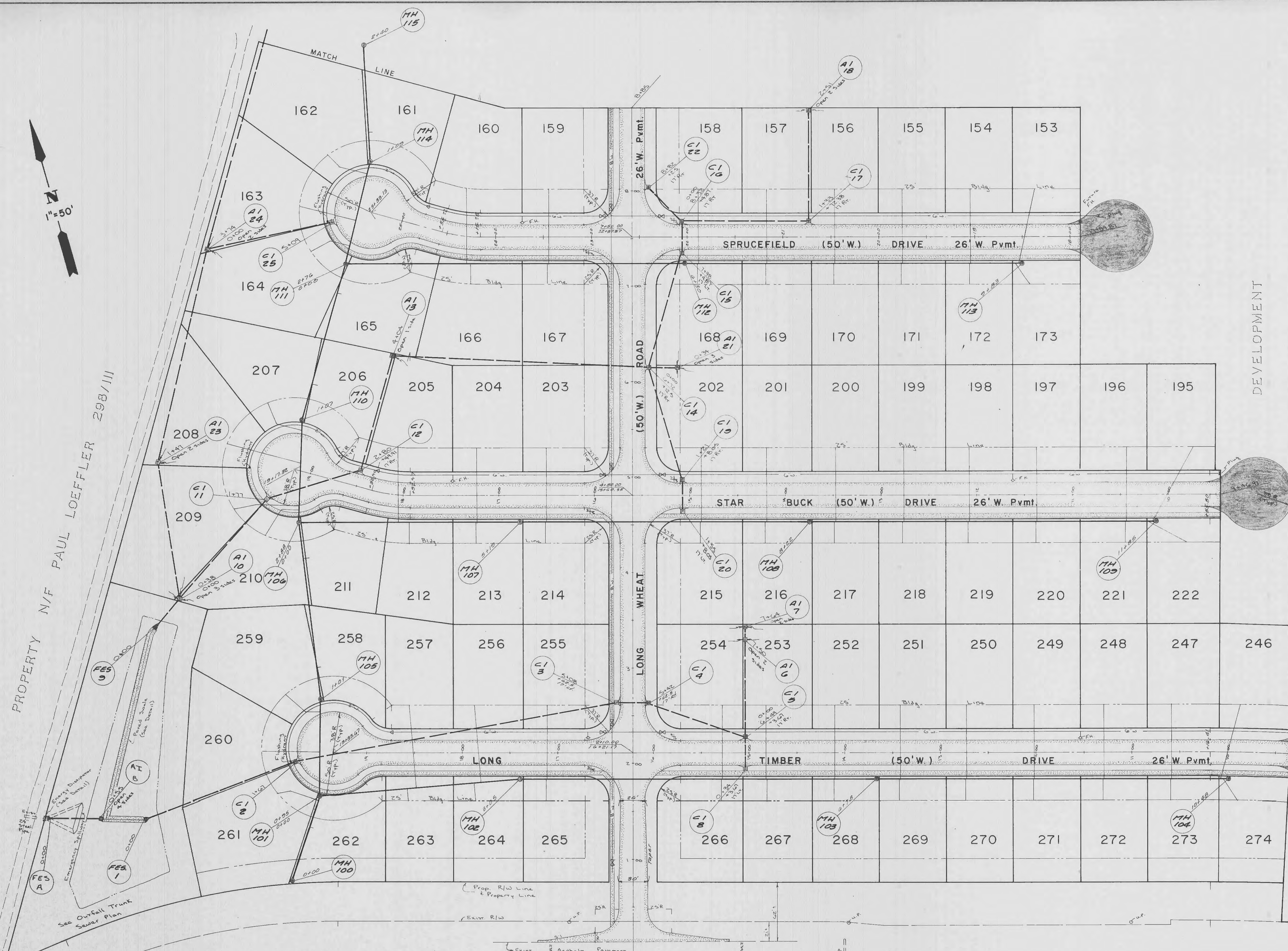


PROPERTY N/F PAUL LOEFFLER 298/1111



DEVELOPMENT

FUTURE

STATE HIGHWAY "N"

MATERIALS TO BE USED ON STATE RIGHT-OF-WAY

CONCRETE SURFACE

- 6" Sack Mix
- 8" Concrete
- 6 x 6 x 6 Steel Mesh (3" below finished grade)
- 4" Rolled Stone Base
- Integral Concrete Curb (6" Vertical) (5/8" Steel Dowels @ 2'C-C)

ASPHALT SURFACE

- 8" Rolled Stone Base or 6" Type X (Black Base)
- 3" Asphalt Top (Type C)
- Machine Laid
- Asphalt Curb (6" Vertical)

All entrances shall meet the specifications and installation requirements of the City of O'Fallon and the Missouri Highway & Transportation Department.