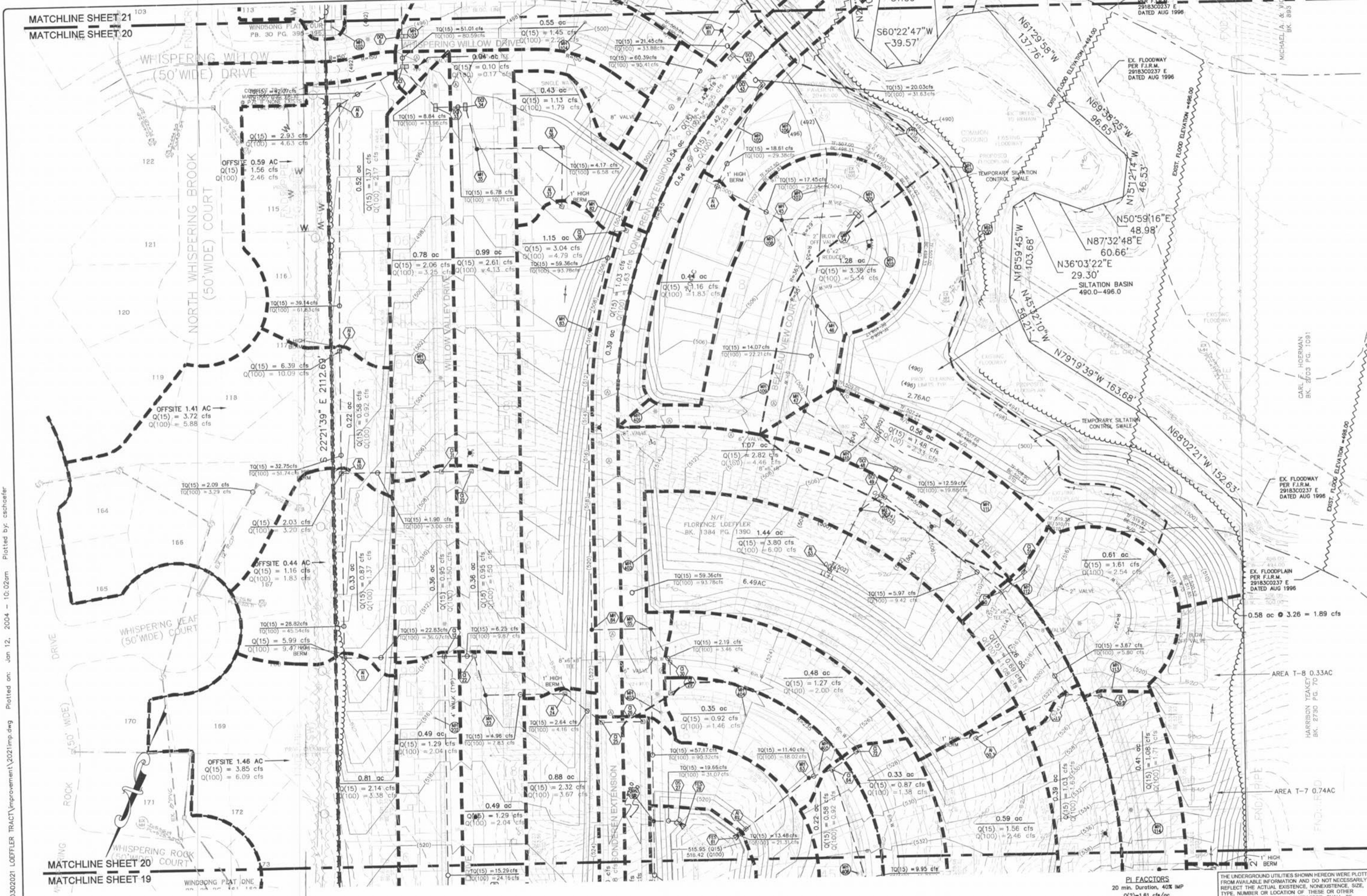
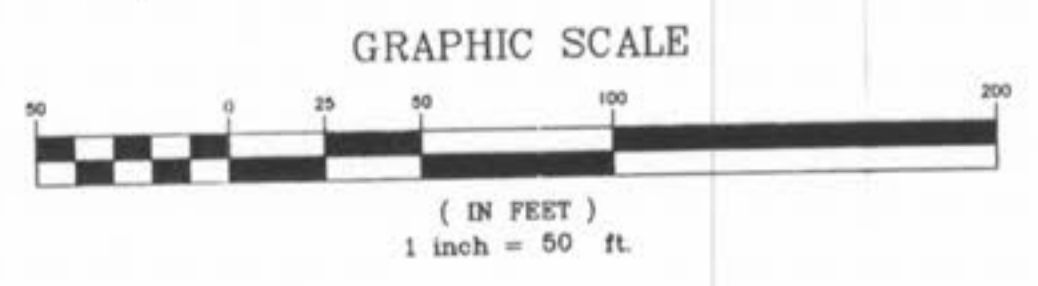


MATCHLINE SHEET 21
MATCHLINE SHEET 20



Drawing name: K:\D\0302021 LOEFFLER TRACT\Improvement\2021\imp.dwg Plotted on: Jan 12, 2004 - 10:02am Plotted by: caschoefer



THIS SHEET FOR DRAINAGE AREAS ONLY

THIS DOCUMENT IS FOR DRAINAGE PURPOSES ONLY!
NOT FOR CONSTRUCTION

PL FACTORS
20 min. Duration, 40% IMP
Q(2)=1.61 cfs/ac
Q(15)=2.64 cfs/ac
Q(25)=3.26 cfs/ac
Q(100)=4.17 cfs/ac

⊕ TYPE A EXPANSION JOINT LOCATION

THE UNDERGROUND UTILITIES SHOWN HEREON WERE PLOTTED FROM AVAILABLE INFORMATION AND DO NOT NECESSARILY REFLECT THE ACTUAL EXISTENCE, NONEXISTENCE, SIZE, TYPE, NUMBER OR LOCATION OF THESE OR OTHER UTILITIES. THE GENERAL CONTRACTOR SHALL BE RESPONSIBLE FOR VERIFYING THE ACTUAL LOCATION OF ALL UNDERGROUND UTILITIES, SHOWN OR NOT SHOWN, AND SAID UTILITIES SHALL BE LOCATED IN THE FIELD PRIOR TO ANY GRADING, EXCAVATION OR CONSTRUCTION OF IMPROVEMENTS. THESE PROVISIONS SHALL IN NO WAY ABSOLVE ANY PARTY FROM COMPLYING WITH THE UNDERGROUND FACILITY SAFETY AND DAMAGE PREVENTION ACT, CHAPTER 319, RSMo.

ISSUE	REMARKS/DATE
1	09/15/03 - Plotted
2	11/11/03
3	12/17/03 - Submitted
4	01/12/04 - Final Submittal

PREPARED FOR:
WHISPERING L.L.C.
5091 NEW BAUMGARTNER ROAD
ST. LOUIS, MISSOURI 63129
(314) 487-6717

PREPARED BY:
Michael A. & Vickie T. G.
1/12/2004

THE **STERLING** CO.
ENGINEERS & SURVEYORS
5055 NEW US HIGHWAY 63
ST. LOUIS, MISSOURI 63129
(314) 487-0440 FAX 487-8644
E-Mail: Sterling@sterling-eng-sur.com

DRAWN: [Signature]
DESIGNED: [Signature]
CHECKED: [Signature]

PROJECT: **WHISPERING WOODS**
SHEET TITLE: DRAINAGE AREA MAP

NO. 03	02	021
M.S.D.		SHEET
P#	20	OF
DIGITAL FILE LOCATION		28

BASE MAP