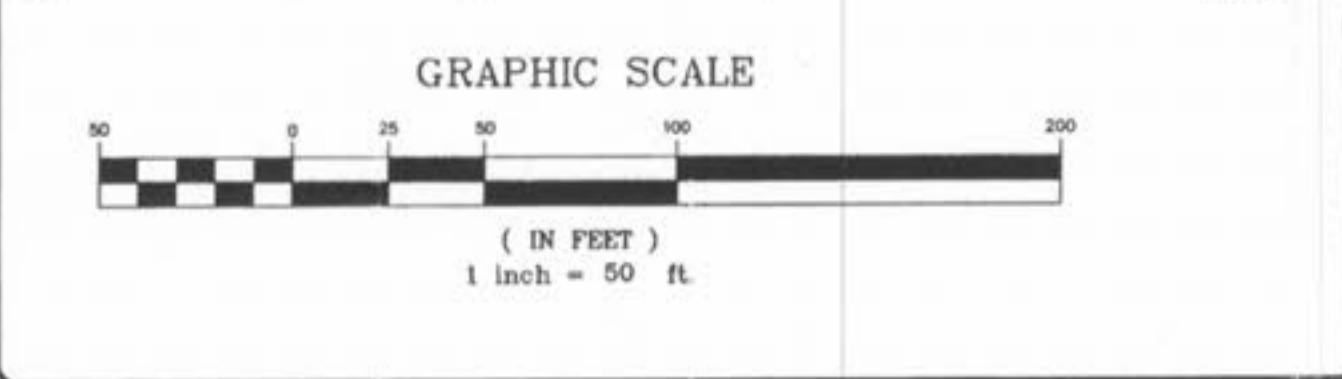
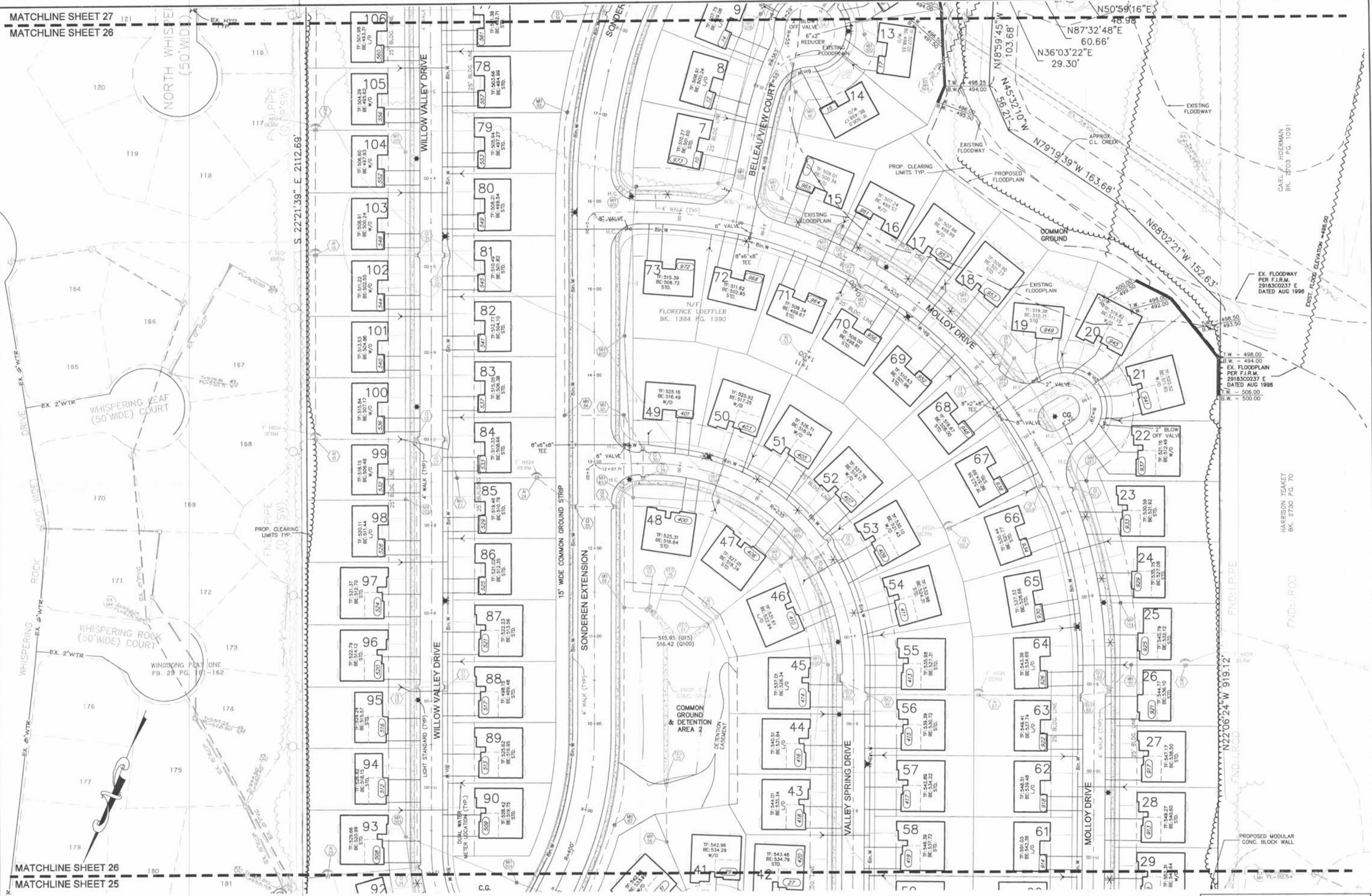


Drawing name: K:\0302021 LOEFFLER TRACT\improvement\2021imp.dwg Plotted on: Jan 12, 2004 - 10:00am Plotted by: cschoaier



THE UNDERGROUND UTILITIES SHOWN HEREON WERE PLOTTED FROM AVAILABLE INFORMATION AND DO NOT NECESSARILY REFLECT THE ACTUAL EXISTENCE, NON-EXISTENCE, SIZE, TYPE, NUMBER OR LOCATION OF THESE OR OTHER UTILITIES. THE GENERAL CONTRACTOR SHALL BE RESPONSIBLE FOR VERIFYING THE ACTUAL LOCATION OF ALL UNDERGROUND UTILITIES, SHOWN OR NOT SHOWN, AND SAID UTILITIES SHALL BE LOCATED IN THE FIELD PRIOR TO ANY GRADING, EXCAVATION OR CONSTRUCTION OF IMPROVEMENTS. THESE PROVISIONS SHALL IN NO WAY ABSOLVE ANY PARTY FROM COMPLYING WITH THE UNDERGROUND FACILITY SAFETY AND DAMAGE PREVENTION ACT, CHAPTER 319, RSMo

ISSUE	REMARKS/DATE
1	08/17/03 (CHS)
2	12/17/03 - Submitted
3	01/12/04 - Final Submittal

PREPARED FOR:
WHISPERING L.L.C.
 5091 NEW BAUMGARTNER ROAD
 ST. LOUIS, MISSOURI 63129
 (314) 487-6717

PREPARED BY:
THE STERLING CO.
 ENGINEERS & SURVEYORS
 5056 NEW BAUMGARTNER ROAD
 ST. LOUIS, MISSOURI 63129
 (314) 487-0440 FAX 487-6944
 E-Mail: Sterling@sterling-eng-survey.com

DRAWN: [Signature]
 DESIGNED: [Signature]
 CHECKED: [Signature]

PROJECT:	NO. 03 02 021
	M.S.D. SHEET 26 OF 28
	PW 26
	DISTRICT/LOCATION

BASE MAP